

# FOR SUBLEASE | SUITE 218

TROY PLACE - 3155 WEST BIG BEAVER ROAD



## 3155 WEST BIG BEAVER ROAD TROY, MICHIGAN 48084

### PROPERTY HIGHLIGHTS:

- Excellent Sublease opportunity at Troy Place
- Full-service building with brand new cafe
- Four (4) windowed offices
- Prominent elevator lobby access
- Premises were newly renovated
- Excellent condition
- Below market rate of \$17.50 per SF
- Sublease expires December 31, 2029

The information provided herein along with any attachment(s) was obtained from sources believed to be reliable, however, Friedman Real Estate makes no guarantees, warranties, or representations as to the completeness or accuracy of such information and legal counsel is advised. All information provided is subject to verification and no liability for reliance on such information or errors or omissions is assumed. The presentation of this property is submitted subject to errors, omissions, change of price or conditions, prior sale or lease, or withdrawal without notice. Copyright © 2026 Friedman Real Estate. All rights reserved.

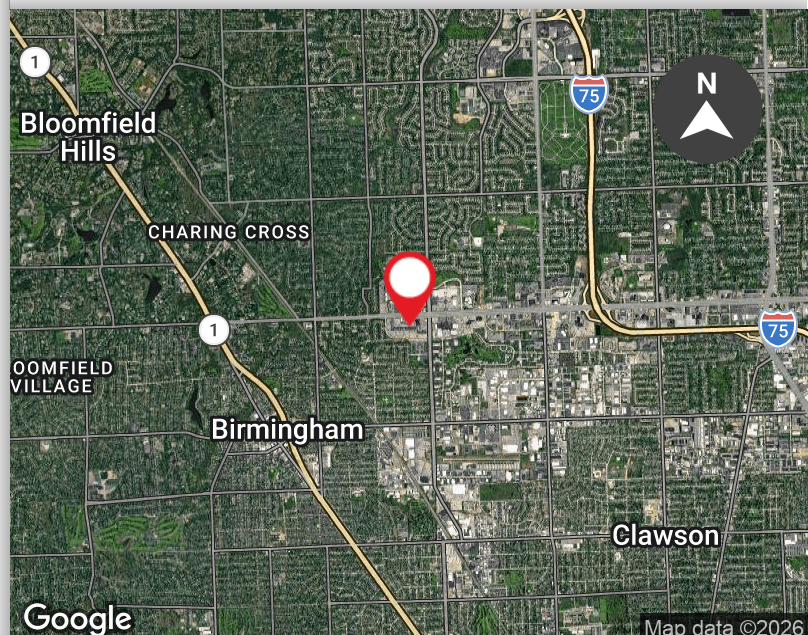
### FOR MORE INFORMATION PLEASE CONTACT:



**GLENN N. DESROSIERS**  
Senior Vice President, Brokerage Services  
[glenn.desrosiers@freg.com](mailto:glenn.desrosiers@freg.com)

**248.324.2000**

**eCODE 410**



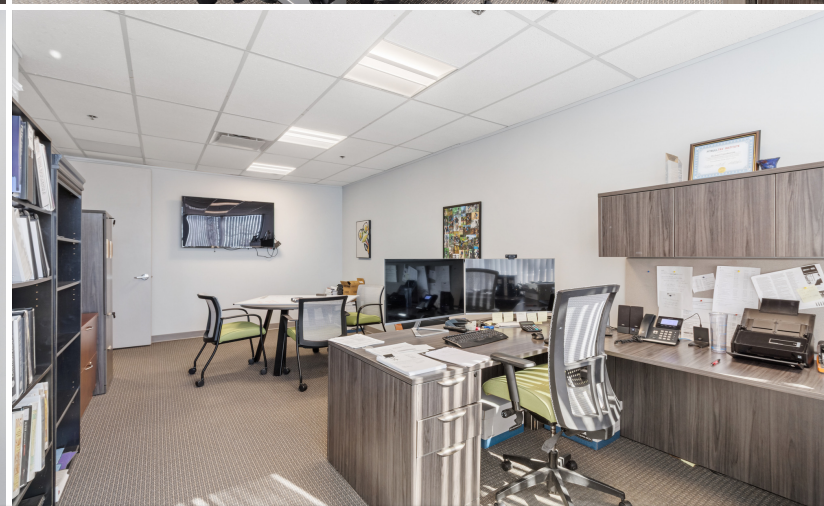
**TROY PLACE - 3155 WEST BIG BEAVER ROAD - SUITE 218 - SUBLEASE**  
**PROPERTY **AVAILABILITY****



**AVAILABLE SUITE | SUBLEASE EXPIRATION DECEMBER 31, 2029**

<b>SPACE</b>	<b>SPACE USE</b>	<b>LEASE RATE</b>	<b>MONTHLY RENT</b>	<b>SIZE (SF)</b>
Suite 218	Office	\$17.50 SF/yr (Gross)	\$3,920.00	2,688 SF

# TROY PLACE - 3155 WEST BIG BEAVER ROAD - SUITE 218 - SUBLEASE PROPERTY **PHOTOS**



**TROY PLACE - 3155 WEST BIG BEAVER ROAD - SUITE 218 - SUBLEASE**  
**PROPERTY PHOTOS**



FOR MORE INFORMATION **PLEASE CONTACT:**



**GLENN N. DESROSIERS**  
[glenn.desrosiers@freg.com](mailto:glenn.desrosiers@freg.com)

**TROY PLACE - 3155 WEST BIG BEAVER ROAD - SUITE 218 - SUBLEASE**  
**PROPERTY PHOTOS**

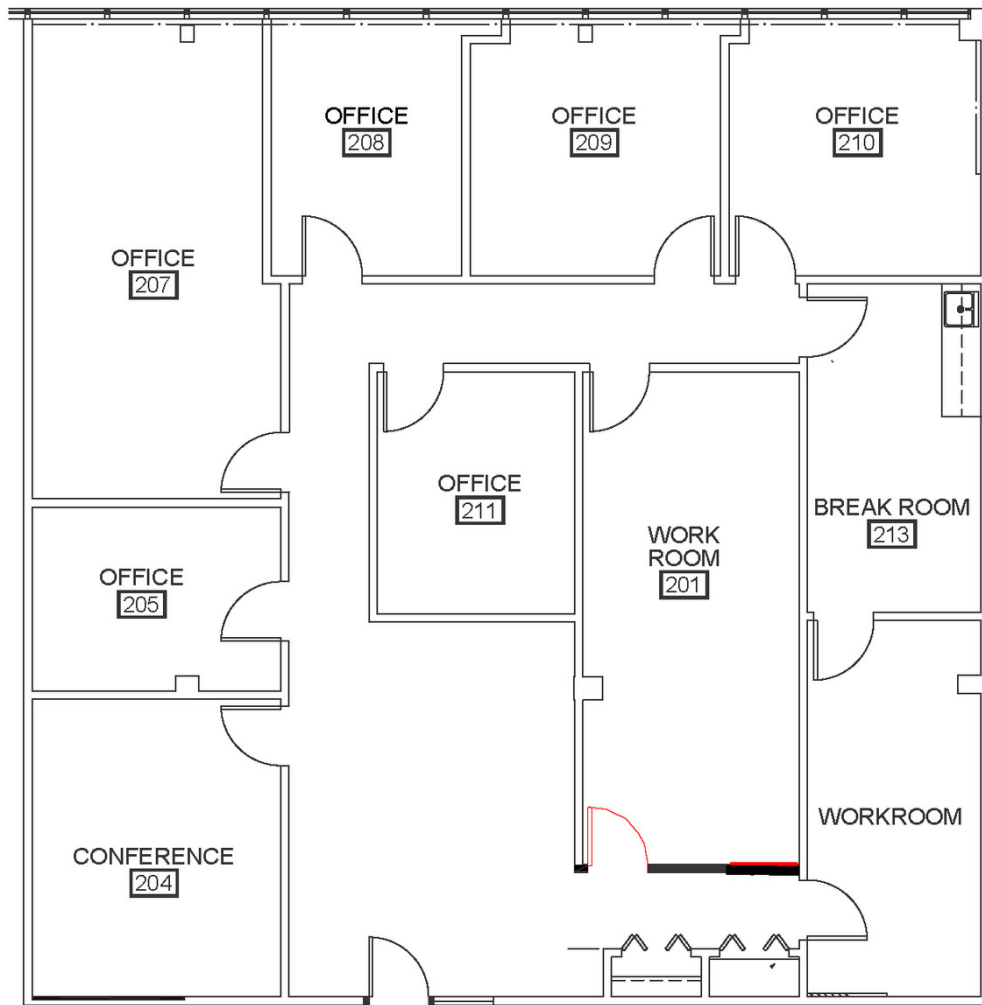


FOR MORE INFORMATION **PLEASE CONTACT:**



**GLENN N. DESROSIERS**  
[glenn.desrosiers@freg.com](mailto:glenn.desrosiers@freg.com)

**TROY PLACE - 3155 WEST BIG BEAVER ROAD - SUBLEASE**  
**FLOOR PLAN | SUITE 218**



**SUITE 218**

3155 WEST BIG BEAVER



2,688 RENTABLE SF

NOTE: ALL ROOM SIZES ARE APPROXIMATE  
AND SUBJECT TO FIELD VERIFICATION.  
DRAWING NOT TO SCALE.