

LEASE RATE

PER SF PER YEAR

\$16.95/SF



1529 GRAND BLVD, KCMO

SPACE OVERVIEW

- **Space:** 911 SF
- **Term:** Negotiable
- **Lease Type:** NNN
- **Est. NNNs:** \$9/SF
- **Parking Price:** \$85 per month per stall
- **Monthly Rent:** Base rent + NNNs = ~\$2,000/month (before utilities)
- **2nd Floor Suite**
- **Parking Location:** Available east of building

Property Highlights

Located on Grand south of T-Mobile Center



Storefront Windows



Exposed Brick Walls



Exposed Wood Ceilings



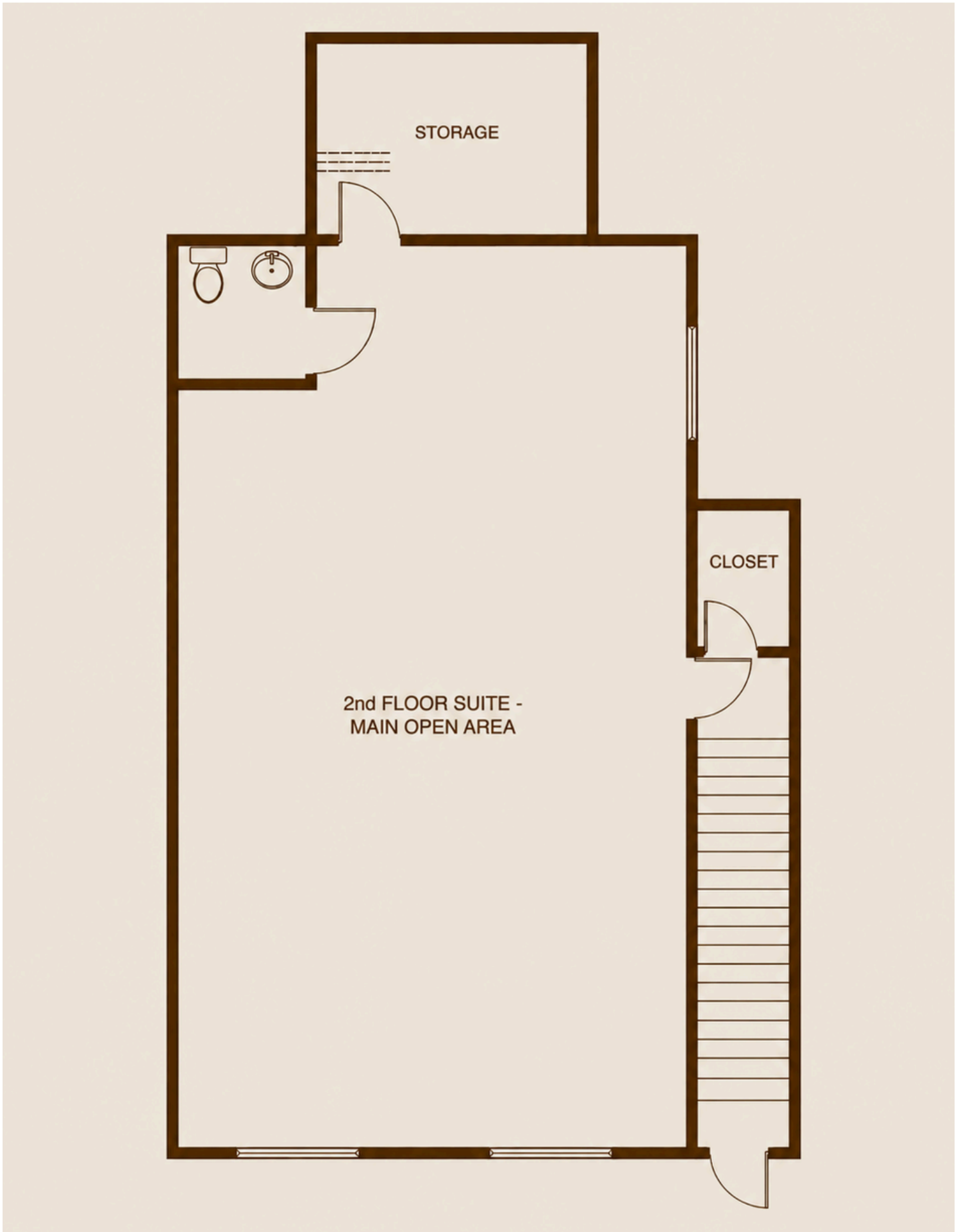
BRENDAN LOELLKE

618-946-7228



brendan@loellkecre.com

APPROXIMATE FLOOR PLAN



BRENDAN LOELLKE



618-946-7228



brendan@loellkecre.com