

# JORDAN ESTATES, SEDONA, ARIZONA

UPTOWN SEDONA DEVELOPMENT OPPORTUNITY



CONTACT FOR MORE INFORMATION

Capri Barney

cbarney@landadvisors.com

928.445.4457

 Land Advisors<sup>®</sup>  
ORGANIZATION

928.445.4457 | LandAdvisors.com



# EXECUTIVE SUMMARY



## LOCATION

East of Jordan Road at the NEC Wilson Canyon Rd & Quail Tail Trail, Sedona, AZ



## SIZE

±4.38 Acres



## LOT DETAILS

8 unimproved lots with a Recorded Final Plat  
Lots Size Range from 20,926 SF to 28,886 SF  
Average Lot Size: 23,832 SF



## PARCELS

401-05-011, 401-05-012, 401-05-013, 401-05-014,  
401-05-015, 401-05-016, 401-05-017, 401-05-018,  
401-05-019



## ZONING

RS-18



## UTILITIES

**Electric:** Arizona Public Service  
**Water:** Arizona Water Company  
**Sewer:** City of Sedona  
**Internet/Telephone/Cable TV:** Optimum



## VIDEO TOUR

[Click Here to View Video Tour](#)



## PROPERTY SUMMARY

Nestled in the heart of Uptown Sedona, Jordan Estates is destined to be a premier subdivision designed for those seeking an extraordinary lifestyle. The property offers breathtaking views of Sedona's iconic red rock buttes and is only a short distance to Oak Creek and the vibrant shops and restaurants in Uptown Sedona.

This shovel ready development opportunity offers eight single family lots that are fully engineered with a recorded final plat. Construction plans were prepared in conjunction with the adjacent Jordan Condominiums. The current owners of the two projects are cooperating to bring infrastructure to the sites which will help to reduce the total development costs for each project.



## AREA INFORMATION

Sedona is a world-renowned travel destination and desirable community to call home. The area uniquely combines small-town charm, dramatic natural splendor, vibrant cultural diversity, health and wellness, and recreational adventure. It offers world-class spas and an incredible array of art galleries. It is a unique melting pot of creative dining experiences presented by top chefs, restaurateurs, brewers and vintners from around the world. With its world-wide reputation as a spiritual mecca and energy hot spot, Sedona has attracted skilled practitioners that bring a holistic approach catering to the mind, body and spirit. The mild climate along with the surrounding 1.8 million acres of national forest land, four wilderness areas and two state parks come together in a magical landscape for outdoor adventure such as hiking, biking and exploring off-road trails. Sedona's harmonious blend of natural beauty, adventure, and luxury make it a favorite destination of locals and visitors alike.

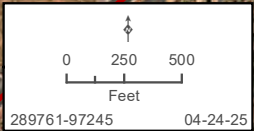
# REGIONAL | JORDAN ESTATES, SEDONA, AZ

Capri Barney | 928.445.4457 | landadvisors.com



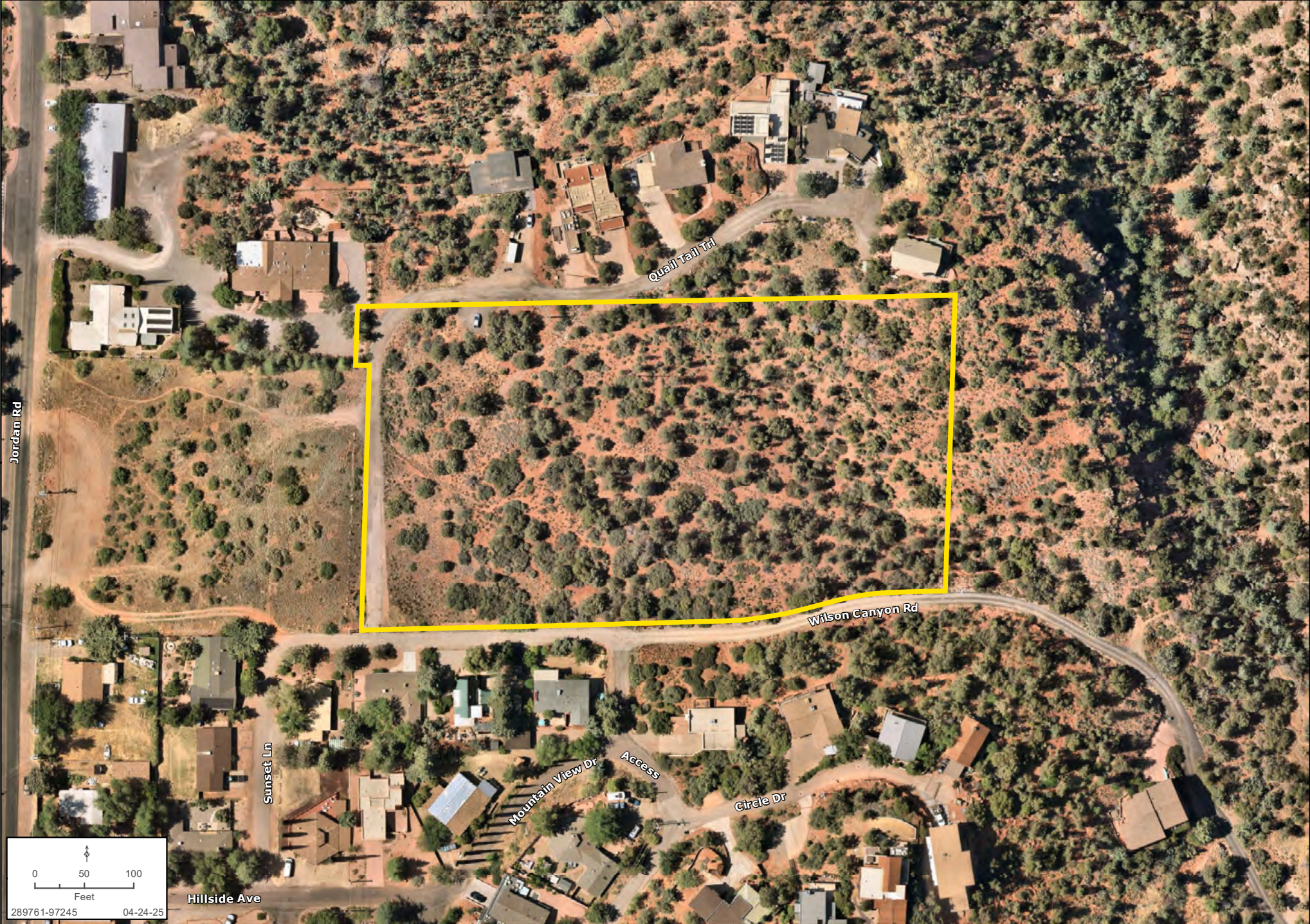
# LOCATION | JORDAN ESTATES, SEDONA, AZ

Capri Barney | 928.445.4457 | landadvisors.com



# DETAIL | JORDAN ESTATES, SEDONA, AZ

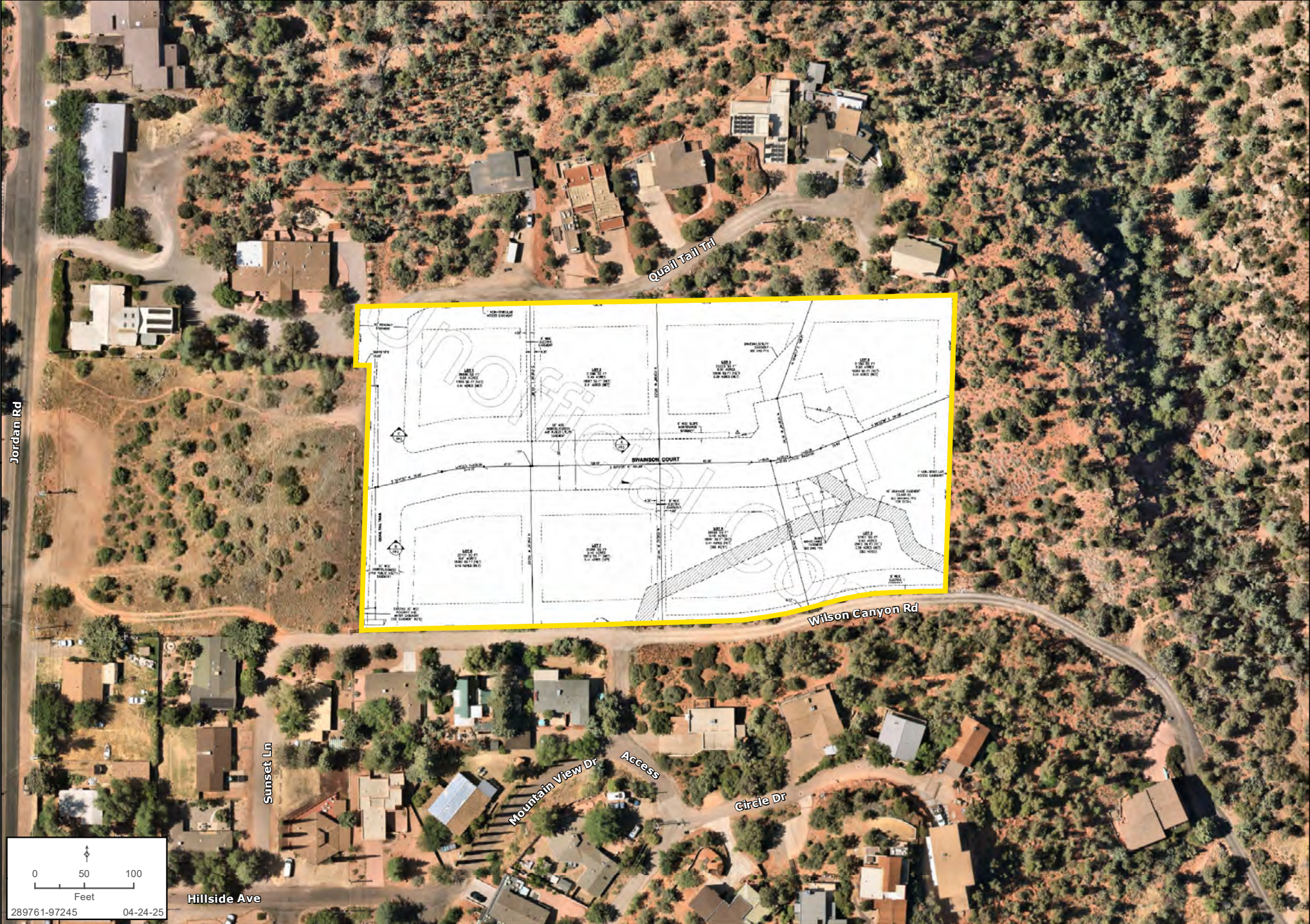
Capri Barney | 928.445.4457 | landadvisors.com



0 50 100  
Feet  
289761-97245 04-24-25

# DETAIL | JORDAN ESTATES, SEDONA, AZ

Capri Barney | 928.445.4457 | landadvisors.com



# DRONE IMAGES



The information in this document and any attachments regarding any property has been obtained from sources believed reliable, but we have not verified it and we make no guarantee, warranty, or representation as to its accuracy or completeness, and we do not undertake to update or correct any of the information presented. Any projections, opinions, assumptions, or estimates ("forward-looking statements") used are, for example, only and do not represent the current or future performance of the property and actual results may differ materially from such forward-looking statement due to, without limitation, changes in: (i) the market, (ii) governmental legal, regulatory or permitted use changes, and (iii) other factors. You and your advisors should conduct a careful, independent investigation of the property to determine to your satisfaction the property's suitability for your needs. Any reliance on this information is at your own risk and is subject to change, prior sale or complete withdrawal. AZCoconino289761 - 05.27.2025.



SCOTTSDALE, ARIZONA  
4900 North Scottsdale Road  
Suite 3000  
Scottsdale, Arizona 85251  
928.445.4457

[LandAdvisors.com](http://LandAdvisors.com)