



**3828-3878 CARSON ST.
TORRANCE, CALIFORNIA**

PROPERTY HIGHLIGHTS

- 6-building multi-tenant office campus in the heart of the Central Torrance Business District
- Identity opportunity on existing monument signage
- Responsive on-site property management & engineering
- Free parking proportionate to office and medical uses
- Central location to affluent residential neighborhoods
- Amenity-rich epicenter near Del Amo Fashion Center
- Entire business park updated with new roof tiles and flat roof surfaces
- Upgraded monument signage
- Outdoor seating areas
- Exterior painting and facade upgrade
- Wireless after-hours access control system
- Variety of efficient office layouts

For information, please contact:

Eric Lastition

Exec. Managing Director
t 310-491-2047
eric.lastition@nrmk.com
CA RE Lic. #01119647

Geoff Ludwig

Exec. Managing Director
t 310-491-2077
geoff.ludwig@nrmk.com
CA RE Lic. #01232244

Zachary Caine

Associate Director
t 310-491-2089
zachary.caine@nrmk.com
CA RE Lic. #02062263

nrmk.com

NEWMARK


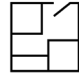


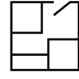
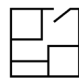

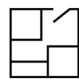

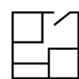

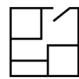

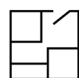

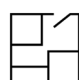

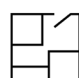

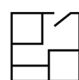





the **Muller**
company



TORRANCE EXECUTIVE PLAZA

3828-3878 CARSON ST.
TORRANCE, CALIFORNIA

OFFICE AVAILABILITY FOR LEASE

BLDG / SUITE	SQ FT	DESCRIPTION	RENTAL RATE	CLICK FLOOR PLAN	CLICK VIRTUAL TOUR
3838 / 105	5,539 sf	Fully built out medical space.	MEDICAL RATE \$3.50 per SF Modified Gross		--
3838 / 106	1,167 sf	4 offices, open area.	\$2.95 per SF Full Service Gross		--
3838 / 200	2,116 sf	2 offices, kitchenette, storage, open space.	\$2.95 per SF Full Service Gross		
3838 / 206	763 sf	2 offices, storage.	\$2.95 per SF Full Service Gross		--
3848 / 105	1,619 sf	5 offices, kitchenette, open space.	\$2.95 per SF Full Service Gross		
3848 / 110	2,950 sf	4 offices, reception, conference, kitchen, open space.	\$2.95 per SF Full Service Gross		
3848 / 320	911 sf	3 offices.	\$2.95 per SF Full Service Gross		
3858 / 202	586 sf	Open space.	\$1,875.20 per Mo Full Service Gross		
3858 / 301	2,029 sf	4 offices, conference, kitchenette, open space.	\$2.95 per SF Full Service Gross		
3858 / 303	2,000 sf	6 offices, conference, kitchenette.	\$2.95 per SF Full Service Gross		
3868 / 205	520 sf	1 office and reception area.	\$1,664.00 per Mo Full Service Gross		
3868 / 220	990 sf	Corner unit with 3 offices, kitchenette, storage. <i>Available 8/1/26.</i>	\$2.95 per SF Full Service Gross		
3878 / 218	1,332 sf	3 offices, kitchenette, open space. <i>Available 6/1/26.</i>	\$2.95 per SF Full Service Gross		--
3878 / 220	3,181 sf	11 offices, conference room, kitchen.	\$2.95 per SF Full Service Gross		--
3878 / 225	2,671 sf	6 offices, reception, kitchen, storage.	\$2.95 per SF Full Service Gross		

Corporate License #01355491

NEWMARK

the **Muller**
company

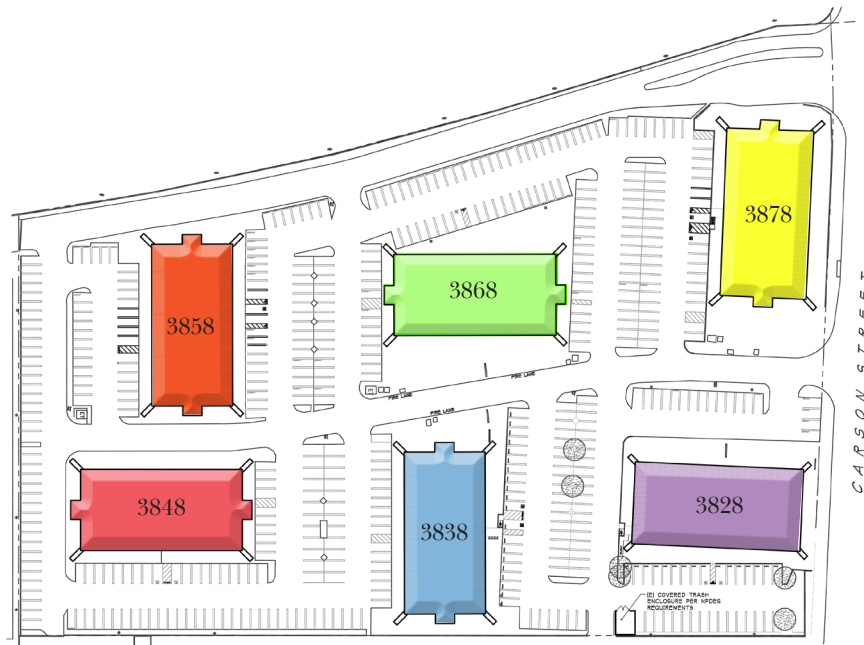
The information contained herein has been obtained from sources deemed reliable but has not been verified and no guarantee, warranty or representation, either express or implied, is made with respect to such information. Terms of sale or lease and availability are subject to change or withdrawal without notice.



TORRANCE EXECUTIVE PLAZA

**3828-3878 CARSON ST.
TORRANCE, CALIFORNIA**

SITE PLAN



Corporate License #01355491

NEWMARK

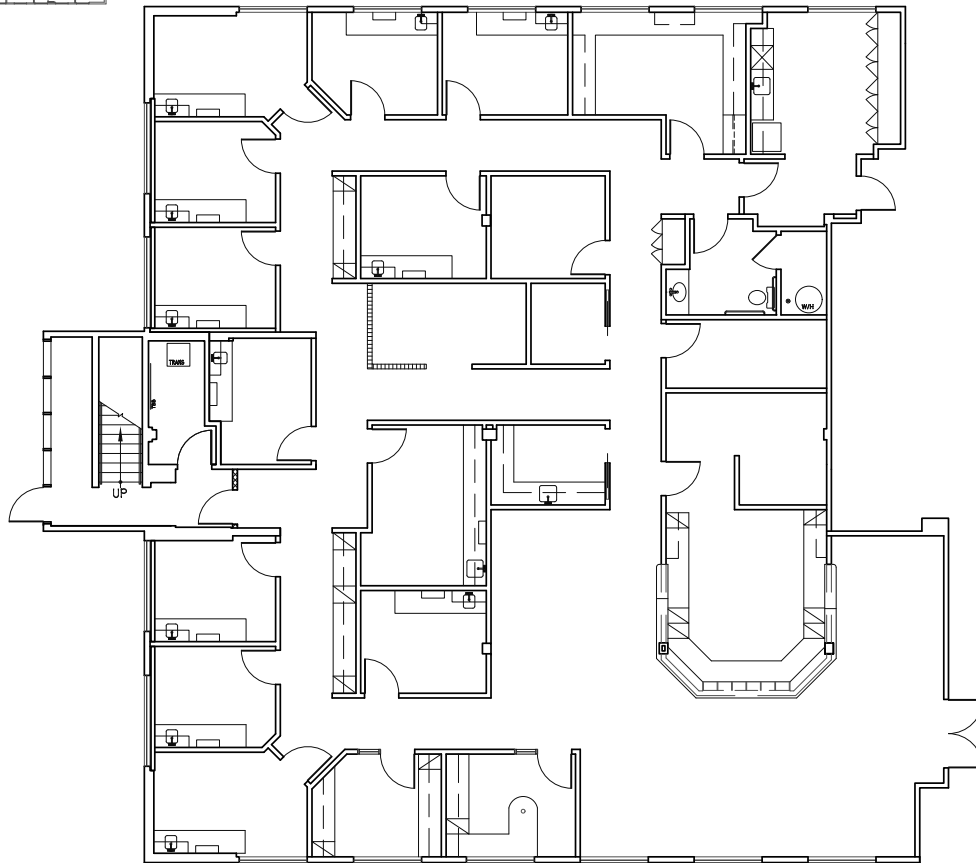
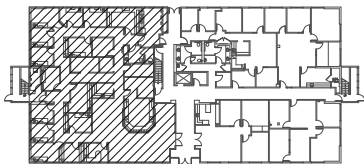
the **Muller**
company

The information contained herein has been obtained from sources deemed reliable but has not been verified and no guarantee, warranty or representation, either express or implied, is made with respect to such information. Terms of sale or lease and availability are subject to change or withdrawal without notice.



TORRANCE EXECUTIVE PLAZA

3828-3878 CARSON ST.
TORRANCE, CALIFORNIA



3838 Carson Street
Torrance, CA 90503



SUITE 105

SCALE: 1/16"=1'-0"

DATE: 06-17-24

5,539 RSF

BACK TO AVAILABILITY

Corporate License #01355491

NEWMARK

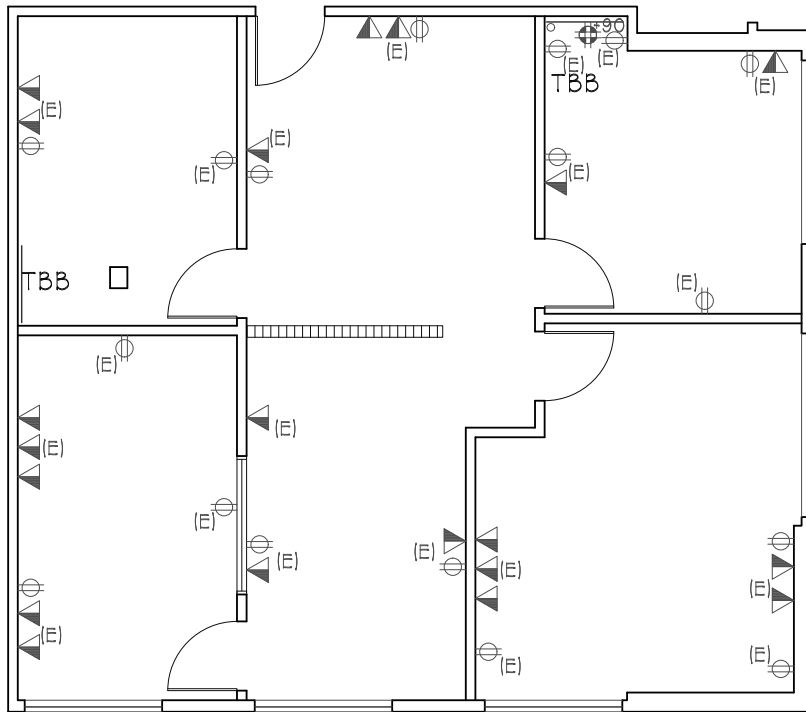
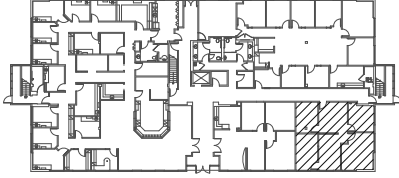
the **Muller**
company

The information contained herein has been obtained from sources deemed reliable but has not been verified and no guarantee, warranty or representation, either express or implied, is made with respect to such information. Terms of sale or lease and availability are subject to change or withdrawal without notice.



TORRANCE EXECUTIVE PLAZA

3828-3878 CARSON ST.
TORRANCE, CALIFORNIA



3838 Carson Street
Torrance, CA 90503

SUITE 106

SCALE: 1/8"=1'-0"
DATE: 05-01-2020
1,167 RSF

BACK TO AVAILABILITY

Corporate License #01355491

NEWMARK

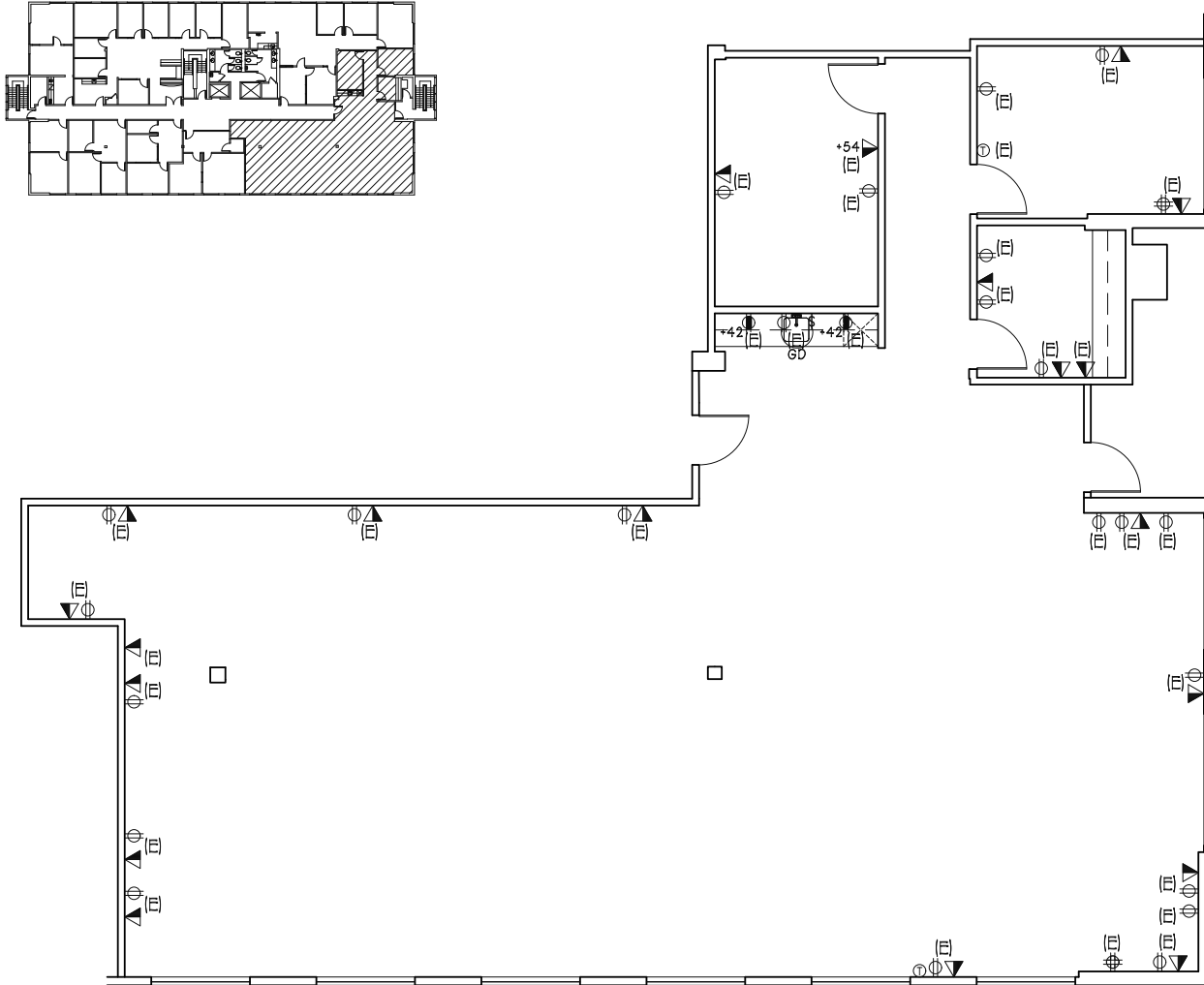
the **Muller**
company

The information contained herein has been obtained from sources deemed reliable but has not been verified and no guarantee, warranty or representation, either express or implied, is made with respect to such information. Terms of sale or lease and availability are subject to change or withdrawal without notice.



TORRANCE EXECUTIVE PLAZA

3828-3878 CARSON ST.
TORRANCE, CALIFORNIA



SUITE 200

SCALE: 3/32"=1'-0"

DATE: 12-04-2023

3,287 RSF

3838 Carson Street

Torrance, CA 90503

BACK TO AVAILABILITY

Corporate License #01355491

NEWMARK

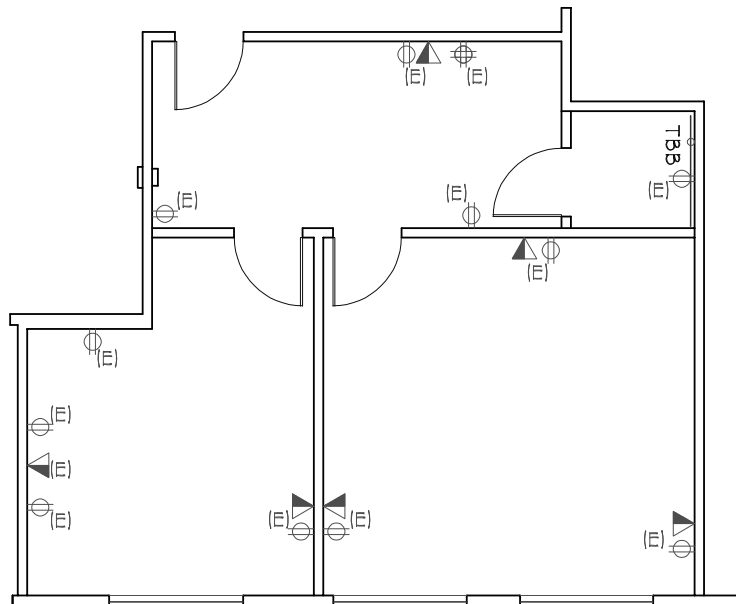
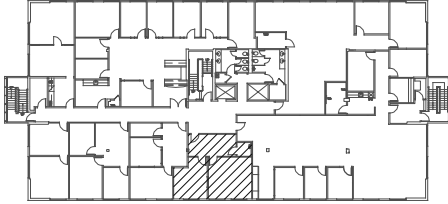
the **Muller**
company

The information contained herein has been obtained from sources deemed reliable but has not been verified and no guarantee, warranty or representation, either express or implied, is made with respect to such information. Terms of sale or lease and availability are subject to change or withdrawal without notice.



TORRANCE EXECUTIVE PLAZA

3828-3878 CARSON ST.
TORRANCE, CALIFORNIA



3838 Carson Street
Torrance, CA 90503

SUITE 206
SCALE: 1/8"=1'-0"
DATE: 12-01-2020
763 RSF

BACK TO AVAILABILITY

Corporate License #01355491

NEWMARK

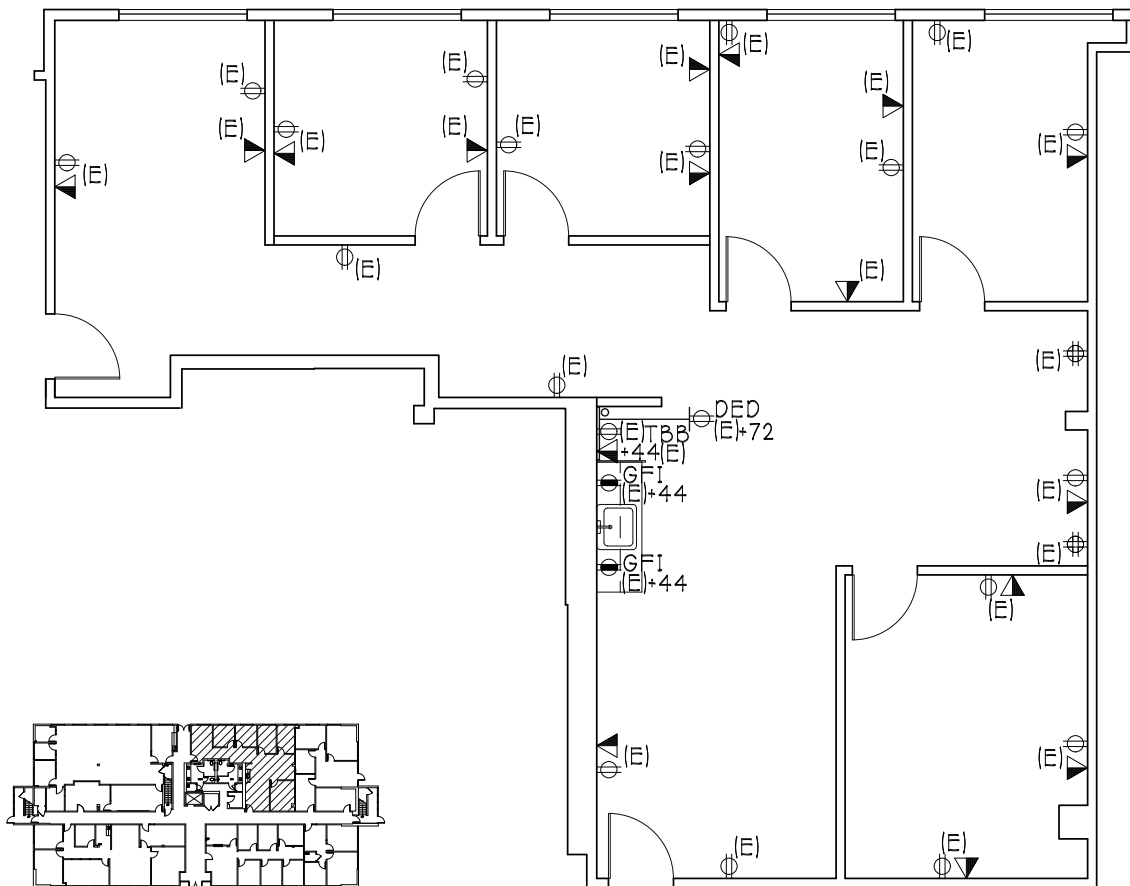
the **Muller**
company

The information contained herein has been obtained from sources deemed reliable but has not been verified and no guarantee, warranty or representation, either express or implied, is made with respect to such information. Terms of sale or lease and availability are subject to change or withdrawal without notice.



TORRANCE EXECUTIVE PLAZA

3828-3878 CARSON ST.
TORRANCE, CALIFORNIA



3848 Carson Street
Torrance, CA 90503



SUITE 105
SCALE: 1/8"=1'-0"
DATE: 02-28-25
1,619 RSF

BACK TO AVAILABILITY

Corporate License #01355491

NEWMARK

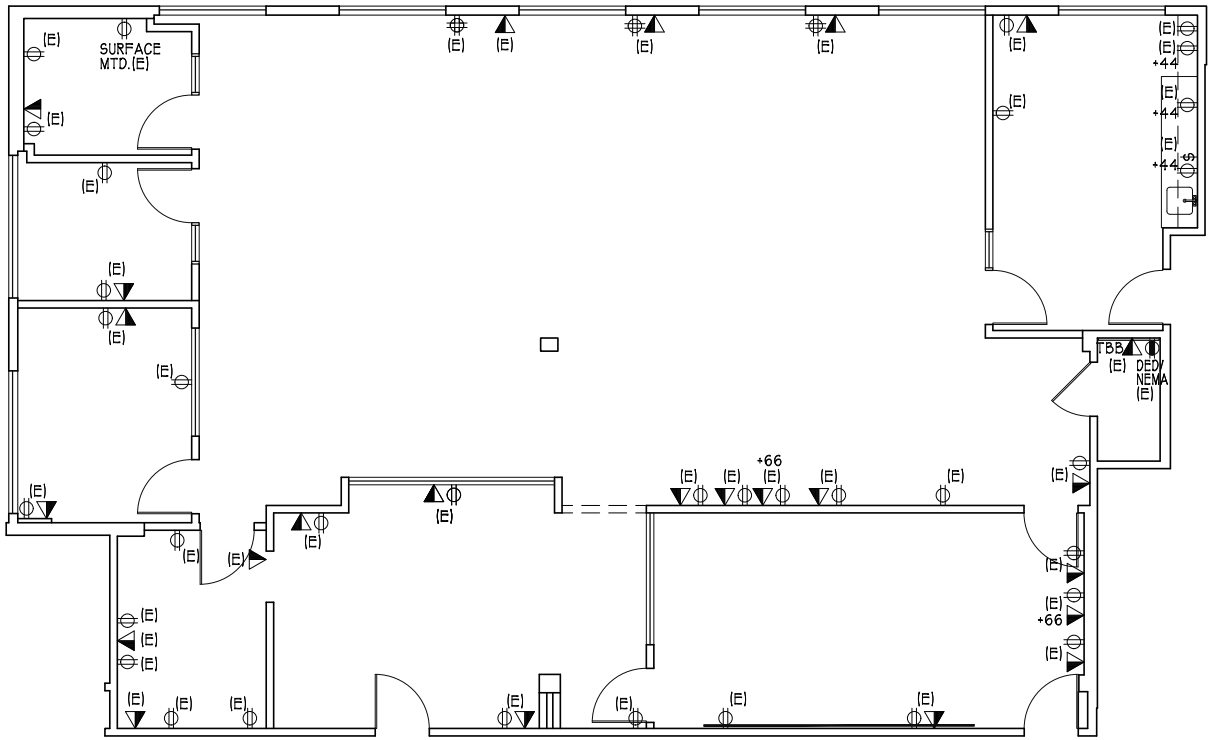
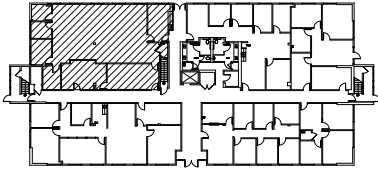
the **Muller**
company

The information contained herein has been obtained from sources deemed reliable but has not been verified and no guarantee, warranty or representation, either express or implied, is made with respect to such information. Terms of sale or lease and availability are subject to change or withdrawal without notice.



TORRANCE EXECUTIVE PLAZA

3828-3878 CARSON ST.
TORRANCE, CALIFORNIA



3848 Carson Street
Torrance, CA 90503

SUITE 110
SCALE: N.T.S.
DATE: 07-19-24
2,950 RSF

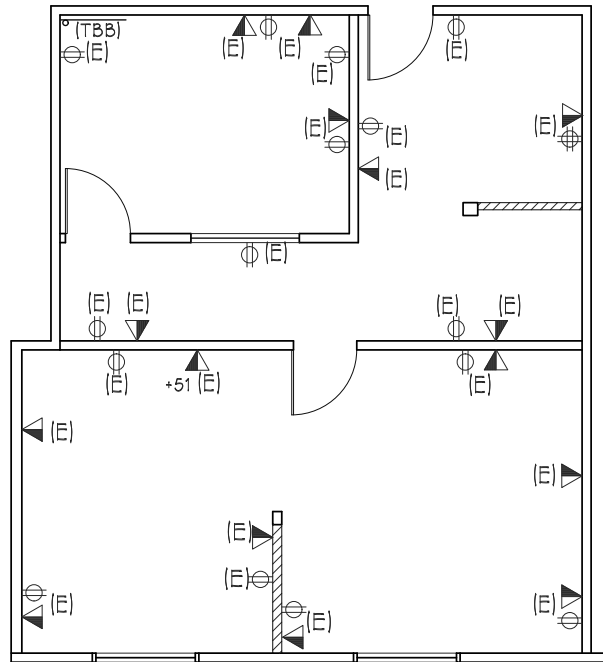
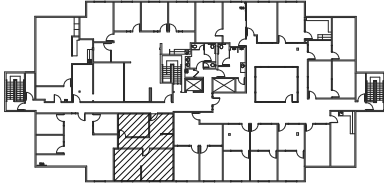
BACK TO AVAILABILITY

Corporate License #01355491



TORRANCE EXECUTIVE PLAZA

3828-3878 CARSON ST.
TORRANCE, CALIFORNIA



3848 Carson Street
Torrance, CA 90503



SUITE 320

SCALE: 1/8"=1'-0"

DATE: 06-03-25

911 RSF

BACK TO AVAILABILITY

Corporate License #01355491

NEWMARK

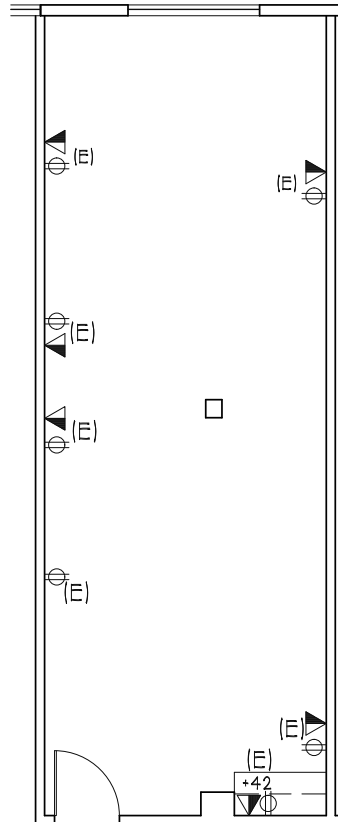
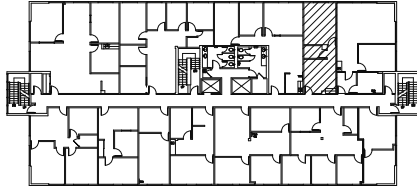
the **Muller**
company

The information contained herein has been obtained from sources deemed reliable but has not been verified and no guarantee, warranty or representation, either express or implied, is made with respect to such information. Terms of sale or lease and availability are subject to change or withdrawal without notice.

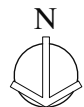


TORRANCE EXECUTIVE PLAZA

3828-3878 CARSON ST.
TORRANCE, CALIFORNIA



3858 Carson Street
Torrance, CA 90503



SUITE 202

SCALE: 1/8"=1'-0"
DATE: 01-16-25
586 RSF

BACK TO AVAILABILITY

Corporate License #01355491

NEWMARK

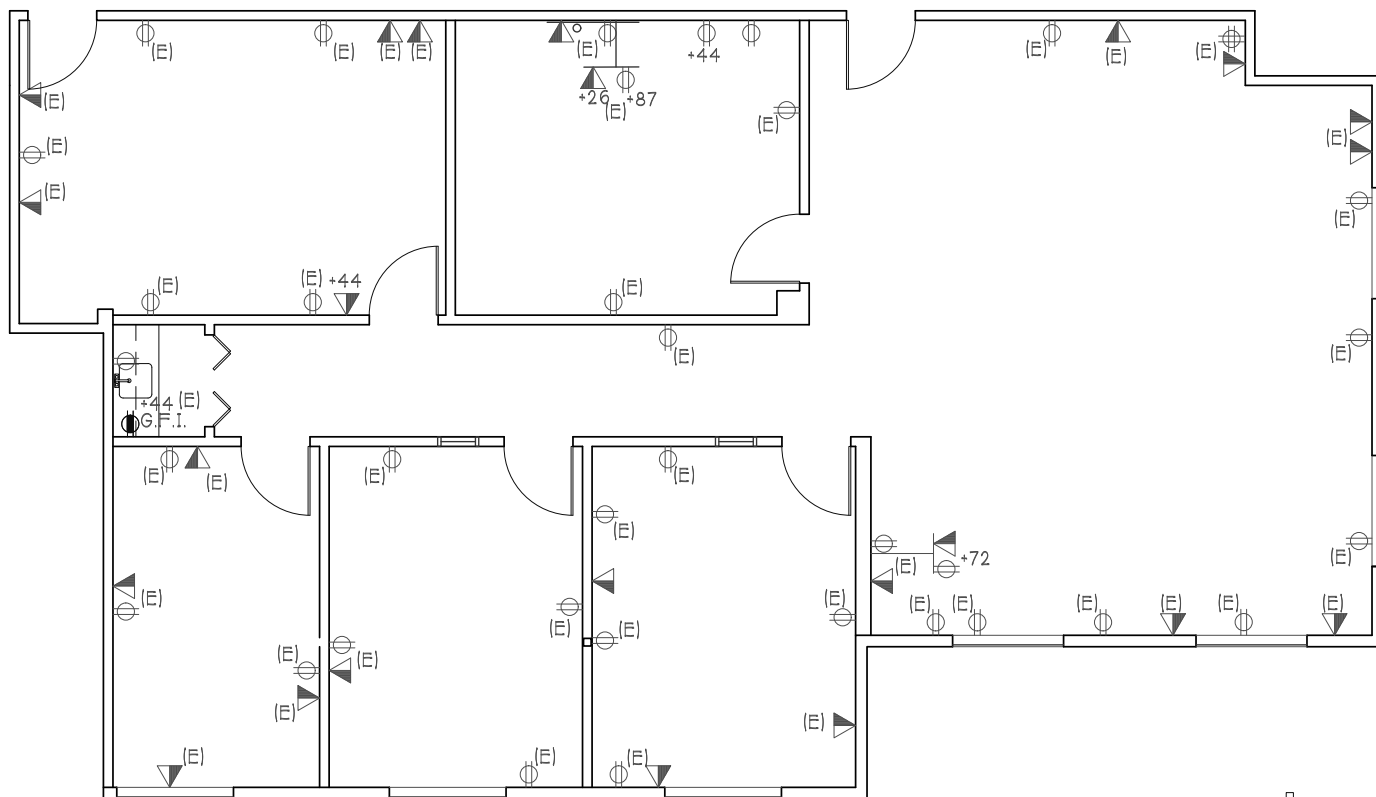
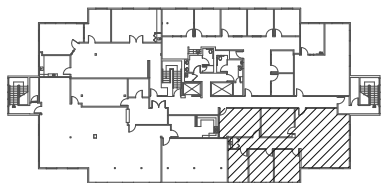
the **Muller**
company

The information contained herein has been obtained from sources deemed reliable but has not been verified and no guarantee, warranty or representation, either express or implied, is made with respect to such information. Terms of sale or lease and availability are subject to change or withdrawal without notice.



TORRANCE EXECUTIVE PLAZA

3828-3878 CARSON ST.
TORRANCE, CALIFORNIA



3858 Carson Street
Torrance, CA 90503



SUITE 301
SCALE: 1/8"=1'-0"
DATE: 06-06-22
2,029 RSF

BACK TO AVAILABILITY

Corporate License #01355491

NEWMARK

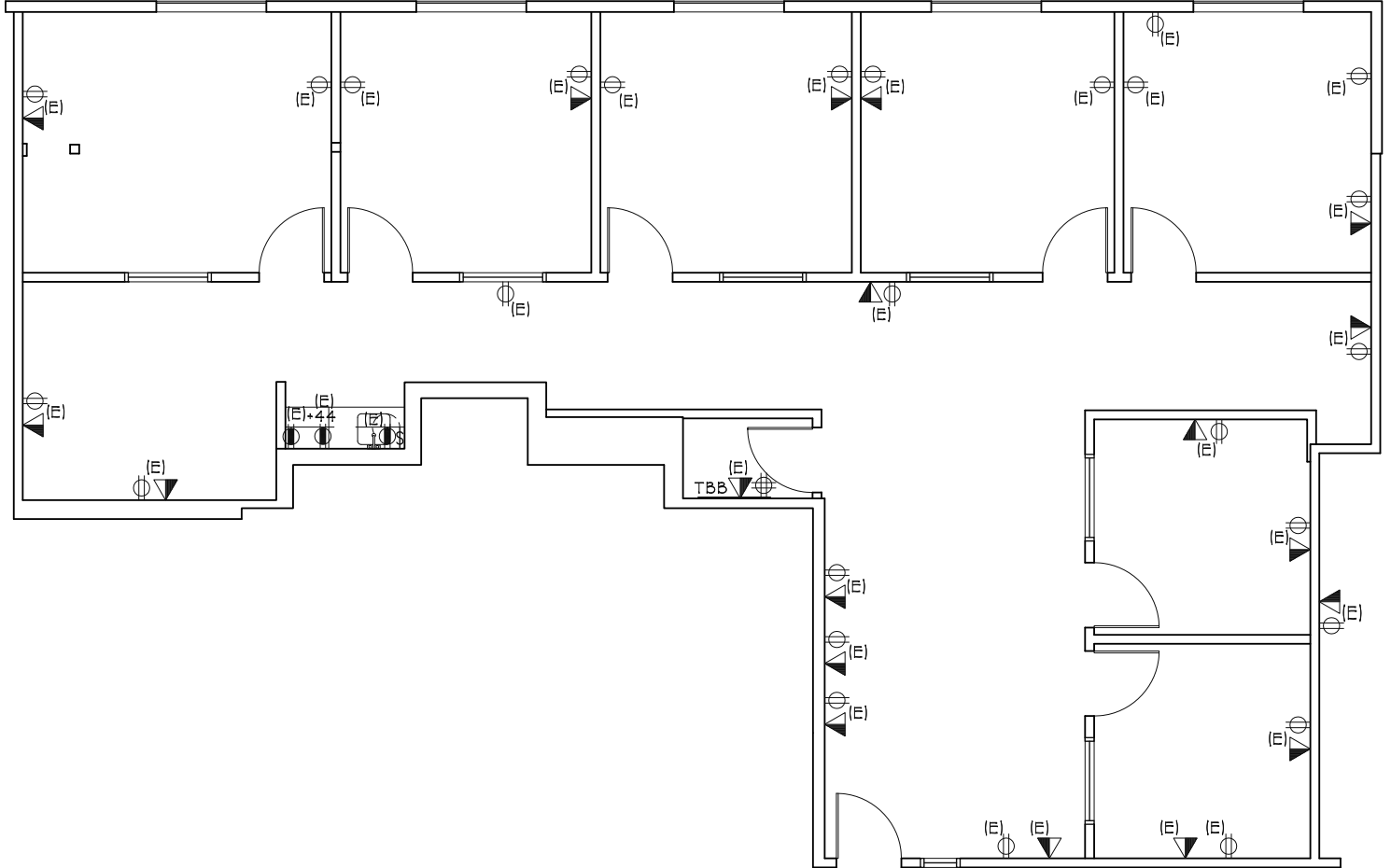
the **Muller**
company

The information contained herein has been obtained from sources deemed reliable but has not been verified and no guarantee, warranty or representation, either express or implied, is made with respect to such information. Terms of sale or lease and availability are subject to change or withdrawal without notice.



TORRANCE EXECUTIVE PLAZA

3828-3878 CARSON ST.
TORRANCE, CALIFORNIA



3858 Carson Street
Torrance, CA 90503



SUITE 303

SCALE: 1/8"=1'-0"
DATE: 02-23-17
2,000 RSF

BACK TO AVAILABILITY

Corporate License #01355491

NEWMARK

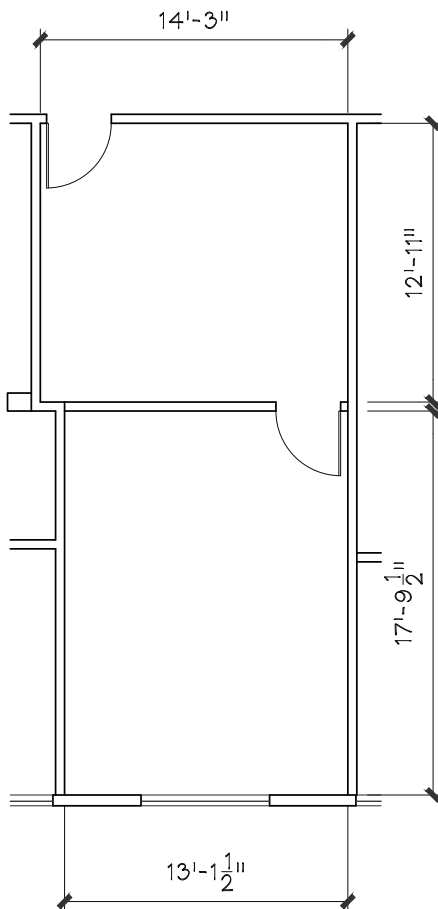
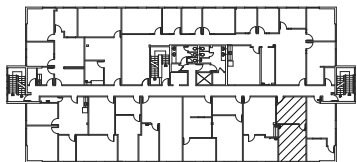
the **Muller**
company

The information contained herein has been obtained from sources deemed reliable but has not been verified and no guarantee, warranty or representation, either express or implied, is made with respect to such information. Terms of sale or lease and availability are subject to change or withdrawal without notice.



TORRANCE EXECUTIVE PLAZA

3828-3878 CARSON ST.
TORRANCE, CALIFORNIA



3868 Carson Street
Torrance, CA 90503

SUITE 205

SCALE: 1/8"=1'-0"

DATE: 07-14-25

520 RSF

BACK TO AVAILABILITY

Corporate License #01355491

NEWMARK

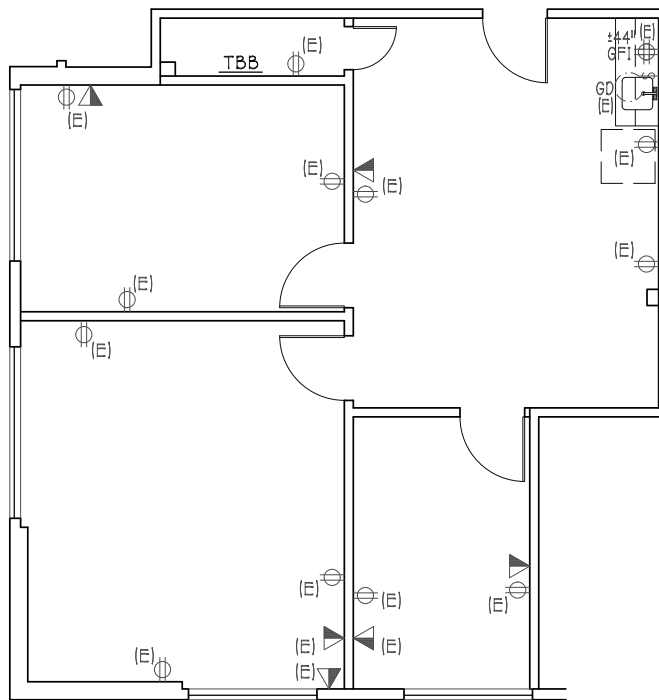
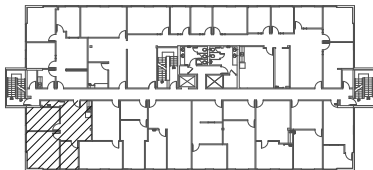
the **Muller**
company

The information contained herein has been obtained from sources deemed reliable but has not been verified and no guarantee, warranty or representation, either express or implied, is made with respect to such information. Terms of sale or lease and availability are subject to change or withdrawal without notice.



TORRANCE EXECUTIVE PLAZA

3828-3878 CARSON ST.
TORRANCE, CALIFORNIA



3868 CARSON STREET
Torrance, CA 90503



SUITE 220

SCALE: 1/8"=1'-0"
DATE: 10-11-2022
990 RSF

BACK TO AVAILABILITY

Corporate License #01355491

NEWMARK

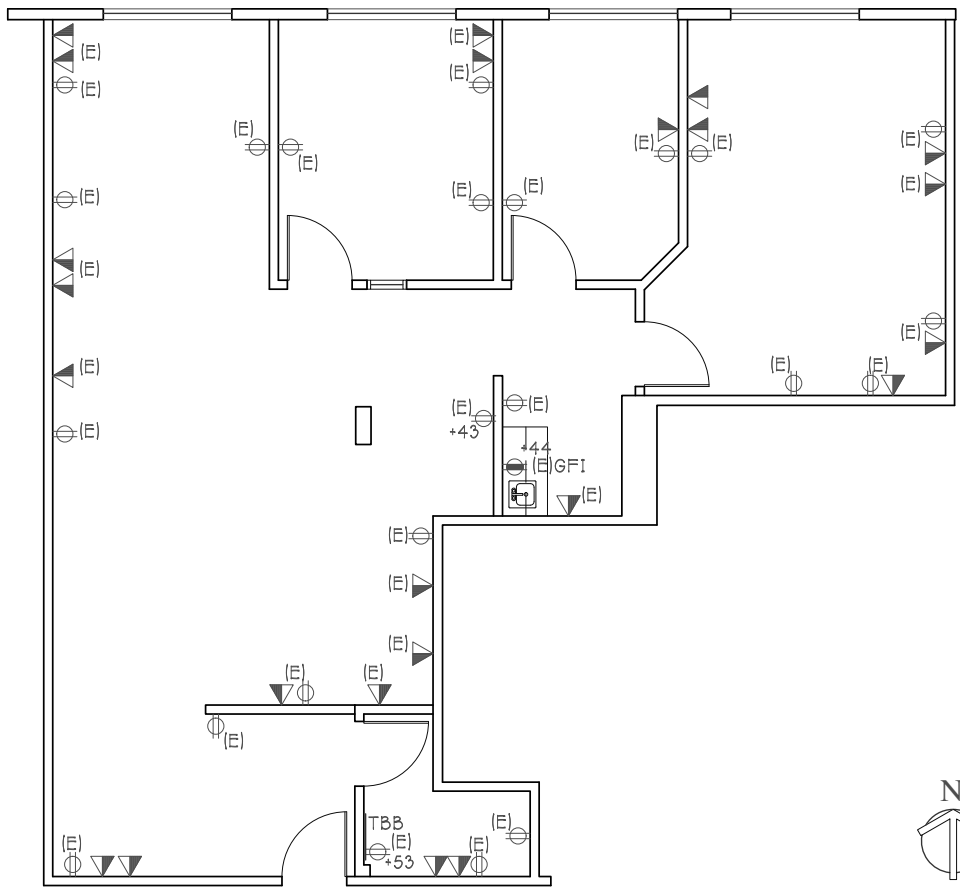
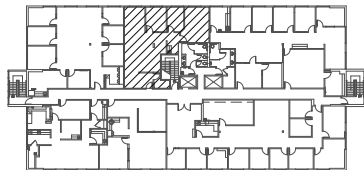
the **Muller**
company

The information contained herein has been obtained from sources deemed reliable but has not been verified and no guarantee, warranty or representation, either express or implied, is made with respect to such information. Terms of sale or lease and availability are subject to change or withdrawal without notice.



TORRANCE EXECUTIVE PLAZA

3828-3878 CARSON ST.
TORRANCE, CALIFORNIA



3878 CARSON STREET
Torrance, CA 90503

SUITE 218
SCALE: 1/8"=1'-0"
DATE: 01-11-23
1,332 RSF

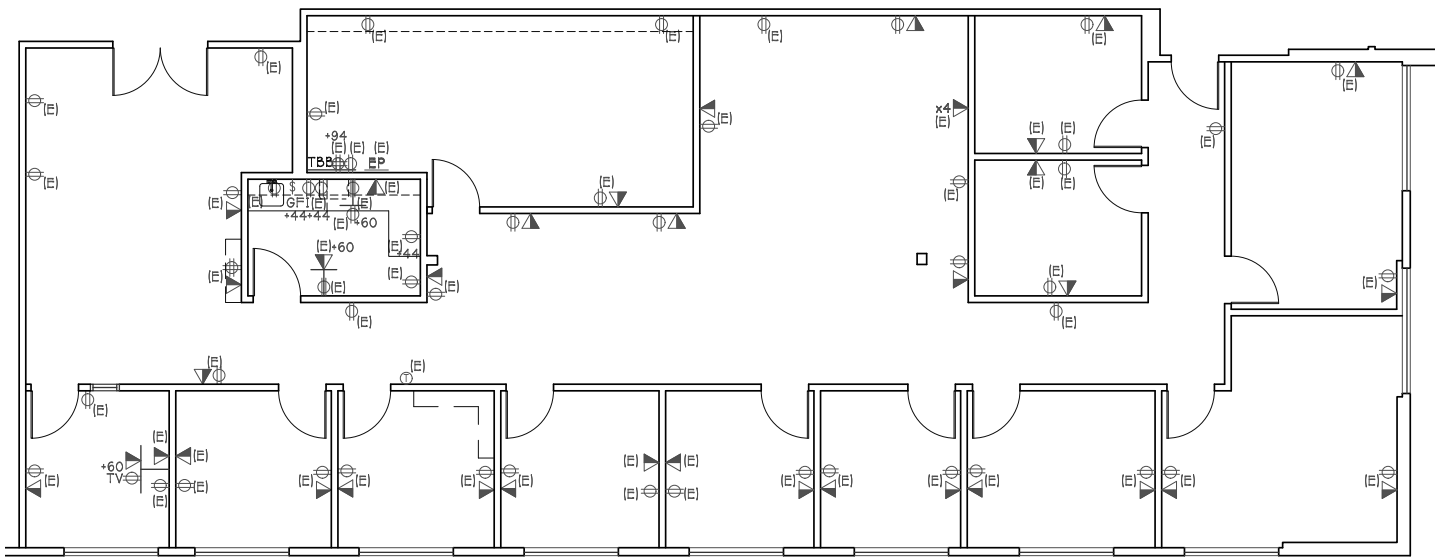
BACK TO AVAILABILITY

Corporate License #01355491



TORRANCE EXECUTIVE PLAZA

3828-3878 CARSON ST.
TORRANCE, CALIFORNIA



3878 Carson Street
Torrance, CA 90503



SUITE 220
SCALE: 3/32"=1'-0"
DATE: 09-18-19
3,181 RSF

BACK TO AVAILABILITY

Corporate License #01355491

NEWMARK

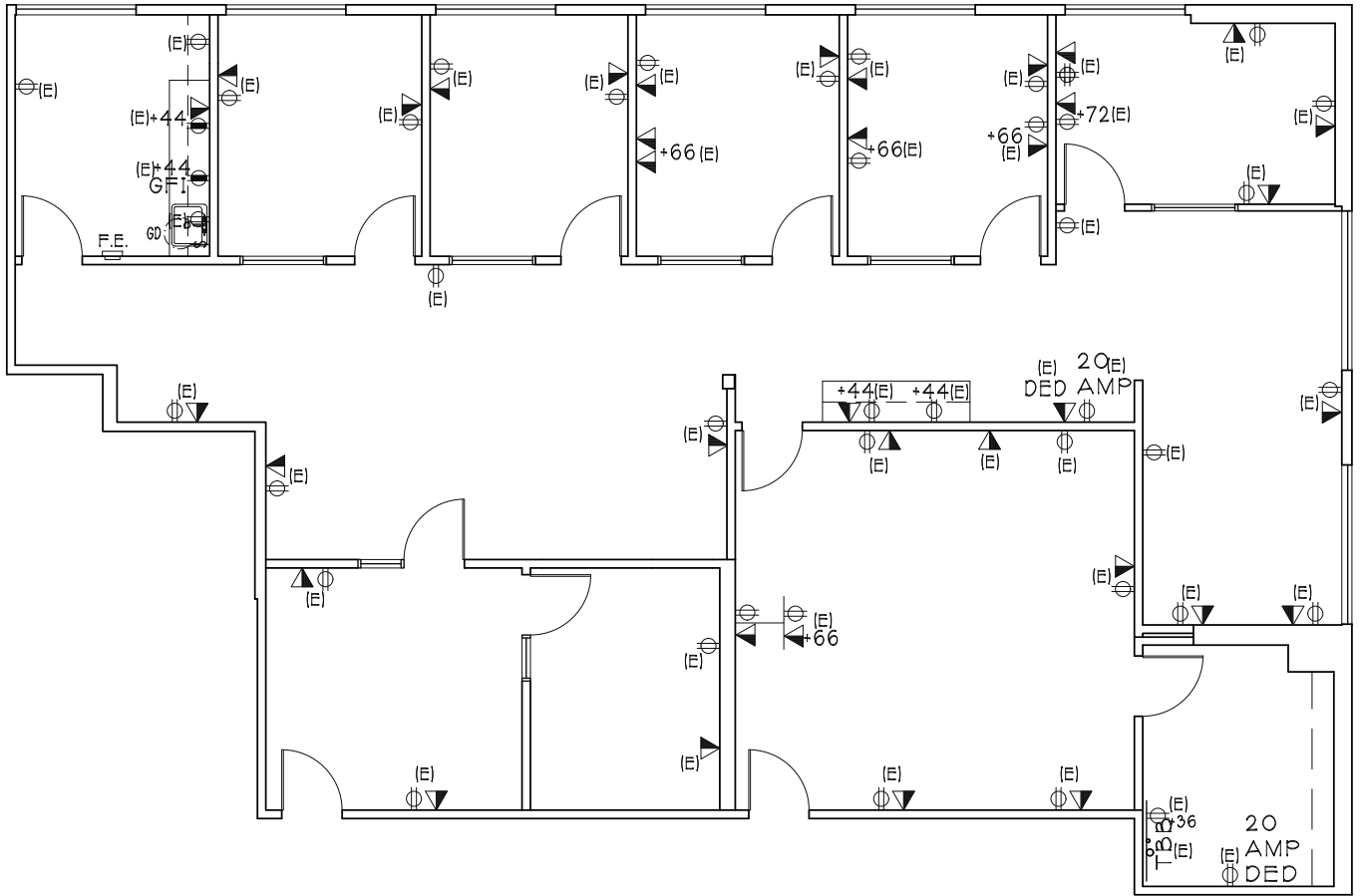
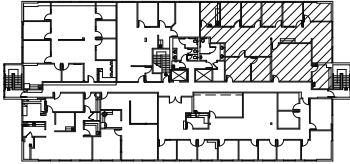
the **Muller**
company

The information contained herein has been obtained from sources deemed reliable but has not been verified and no guarantee, warranty or representation, either express or implied, is made with respect to such information. Terms of sale or lease and availability are subject to change or withdrawal without notice.



TORRANCE EXECUTIVE PLAZA

3828-3878 CARSON ST.
TORRANCE, CALIFORNIA



SUITE 225

SCALE: N.T.S.
DATE: 11-02-23
2,671 RSF

3878 Carson Street
Torrance, CA 90503

BACK TO AVAILABILITY

Corporate License #01355491

NEWMARK

the **Muller**
company

The information contained herein has been obtained from sources deemed reliable but has not been verified and no guarantee, warranty or representation, either express or implied, is made with respect to such information. Terms of sale or lease and availability are subject to change or withdrawal without notice.