

For lease

6215 Regency Parkway
Suite 975, Norcross, GA



Building size 23,821 s.f.

Available size 2,456 s.f.

Office size 1,600 s.f.

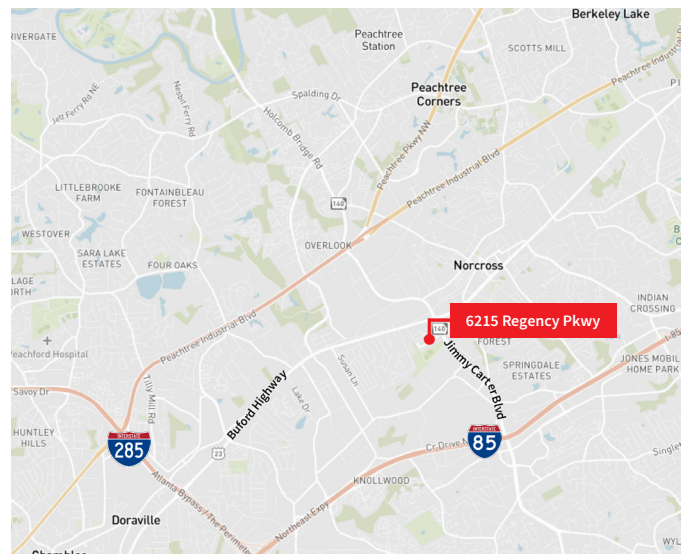
Clear height 18'

Dock-high door 1

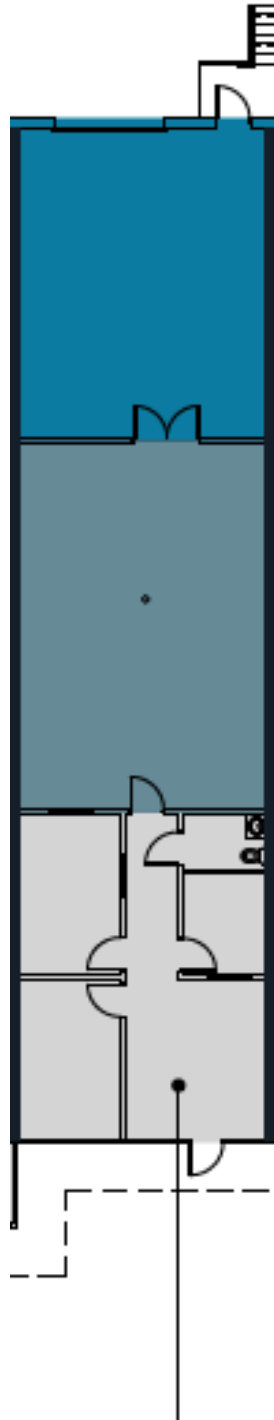
Bay depth 50' x 75'

Truck court depth 60'

Configuration Rear load



6215 Regency Parkway, Suite 975, Norcross, GA



Suite 975

Reed Davis, SIOR
Executive Managing Director
reed.davis@jll.com
+1 404 995 2227

Ryan Manfredi
Associate
ryan.manfredi@jll.com
+1 404 995 2118



RICHLAND
CAPITAL HOLDINGS