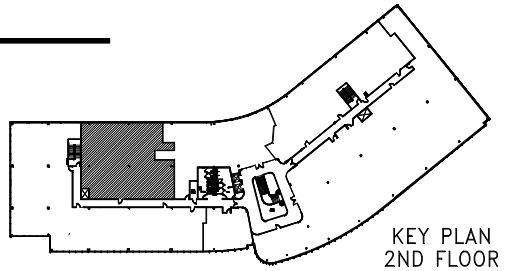
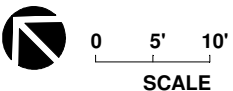
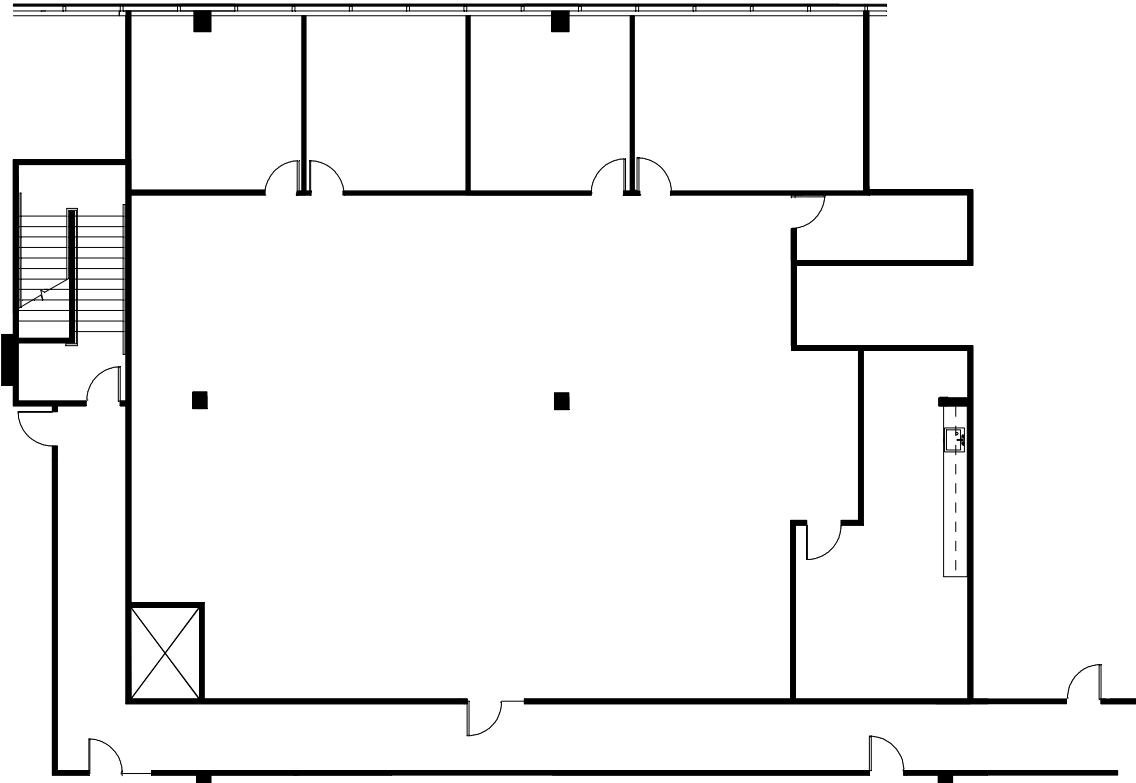


SUITE 225  
4,960 RSF



KEY PLAN  
2ND FLOOR



**AVISON  
YOUNG**

MICHAEL BOWLES  
(214)974.9329 michael.bowles@avisionyoung.com

**CORPORATE POINTE OFFICE**  
401 E. CORPORATE DRIVE  
LEWISVILLE, TEXAS 75057

2ND FLOOR  
MARKETING  
PLAN  
DATE: 03.22.22  
USgreenDESIGN