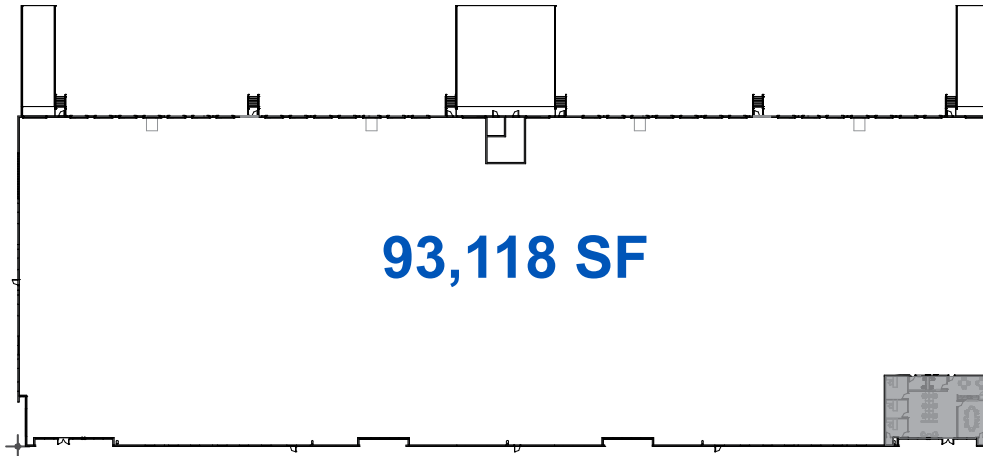




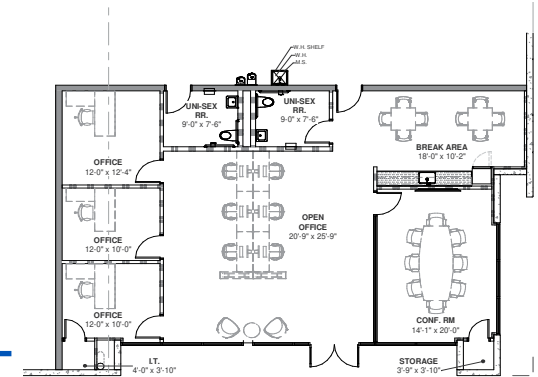
LOGISTICS[®]
PROPERTY
CO

PALM GATEWAY LOGISTICS CENTER

Building 1
8130 E. Pecos Road, Mesa, Arizona 85212



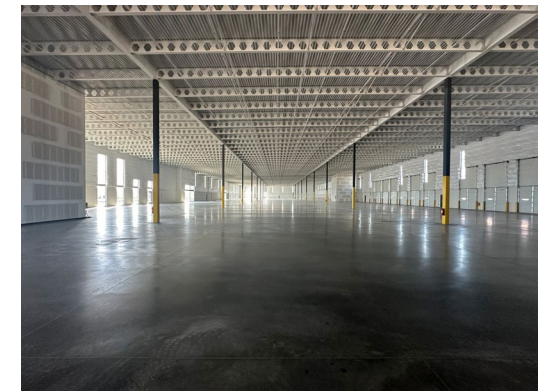
SPEC SUITE



1,850 SF

FEATURES

- CLEAR HEIGHT: 28'
- COLUMN SPACING: 52' X 50' X 60' SPEED BAY
- DIVISIBLE TO: 18,500 SF
- LOADING: 28 DOCK DOORS, 4 DRIVE-INS
- PIT LEVELERS: 4
- PARKING: 148 AUTO
- ZONING: GI
- LIGHTING: LED
- SPRINKLER: ESFR
- BUILDING DIMENSIONS: 180' X 520'
- POWER: 2,500 AMPS



Chris McClurg, SIOR
Principal
602.954.3766
cmclurg@learizona.com

Ken McQueen
Principal
602.474.9564
kmcqueen@learizona.com

Blake Peters
Associate
602.619.3970
bpeters@learizona.com

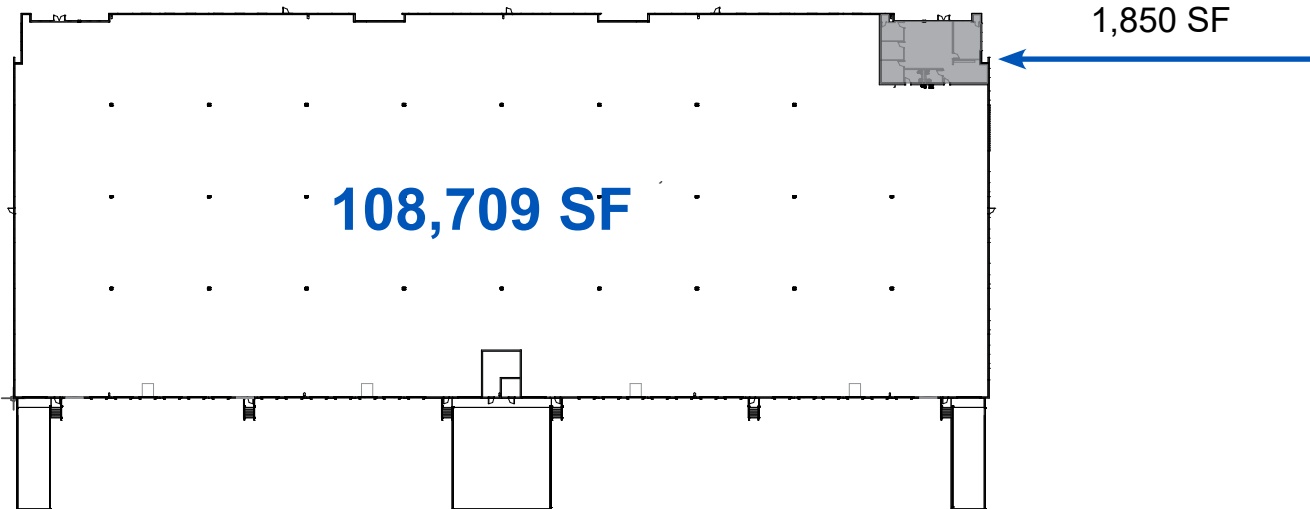
Jack Sims
Associate
602.618.9245
jsims@learizona.com



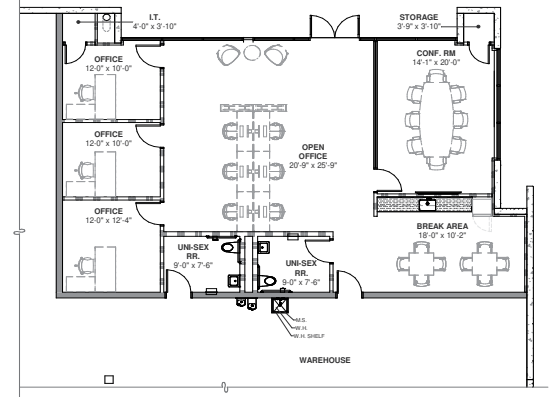
LOGISTICS[®]
PROPERTY
CO

PALM GATEWAY LOGISTICS CENTER

Building 2
8134 E. Pecos Road, Mesa, Arizona 85212

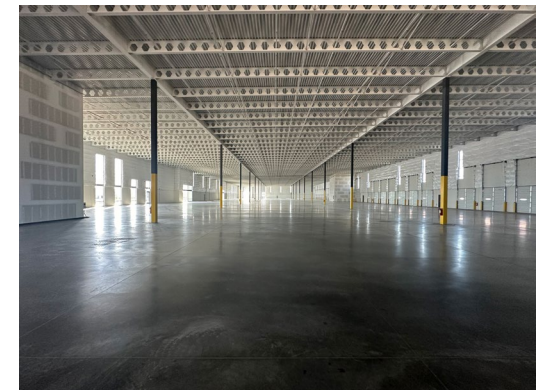


SPEC SUITE



FEATURES

- CLEAR HEIGHT: 32'
- COLUMN SPACING: 52'X50'X60' SPEED BAY
- DIVISIBLE TO: 26,928 SF
- LOADING: 28 DOCK DOORS, 4 DRIVE-INS
- PIT LEVELERS: 4
- PARKING: 182 AUTO
- ZONING: GI
- LIGHTING: LED
- SPRINKLER: ESMR
- BUILDING DIMENSIONS: 210' X 520'
- POWER: 3,000 AMPS



Chris McClurg, SIOR
Principal
602.954.3766
cmclurg@learizona.com

Ken McQueen
Principal
602.474.9564
kmcqueen@learizona.com

Blake Peters
Associate
602.619.3970
bpeters@learizona.com

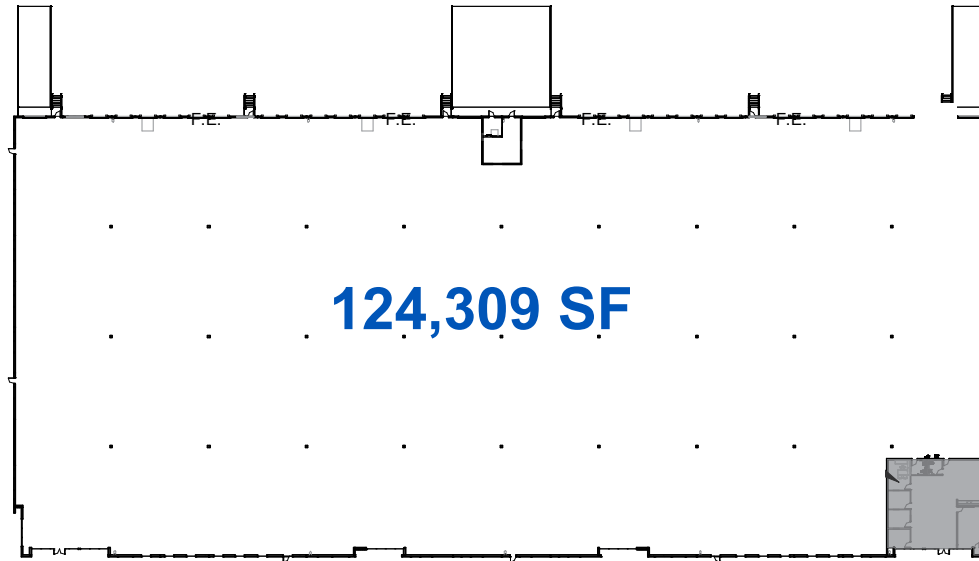
Jack Sims
Associate
602.618.9245
jsims@learizona.com



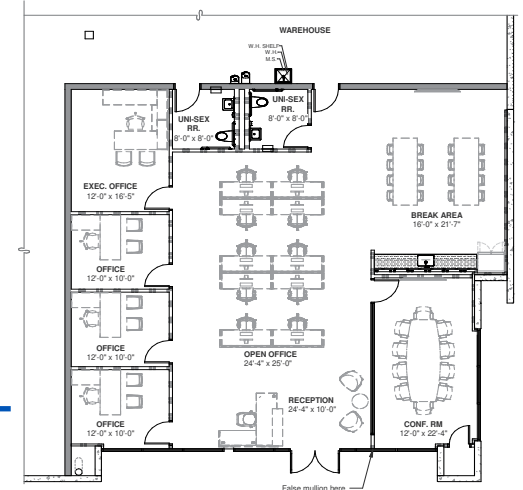
LOGISTICS[®]
PROPERTY
CO

PALM GATEWAY LOGISTICS CENTER

Building 3
8138 E. Pecos Road, Mesa, Arizona 85212



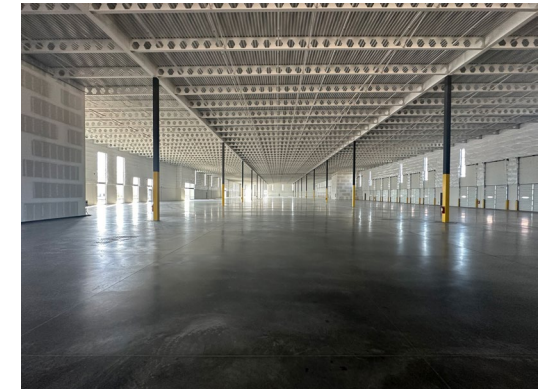
SPEC SUITE



2,500 SF

FEATURES

- CLEAR HEIGHT: 32'
- COLUMN SPACING: 52' X 50' X 60' SPEED BAY
- DIVISIBLE TO: 30,828SF
- LOADING: 28 DOCK DOORS, 4 DRIVE-INS
- PIT LEVELERS: 4
- PARKING: 182 AUTO
- ZONING: GI
- LIGHTING: LED
- SPRINKLER: ESFR
- BUILDING DIMENSIONS: 240' X 520'
- POWER: 3,000 AMPS



LEE & ASSOCIATES
COMMERCIAL REAL ESTATE SERVICES

Chris McClurg, SIOR
Principal
602.954.3766
cmclurg@learizona.com

Ken McQueen
Principal
602.474.9564
kmcqueen@learizona.com

Blake Peters
Associate
602.619.3970
bpeters@learizona.com

Jack Sims
Associate
602.618.9245
jsims@learizona.com