



For Lease

RIPCO
RETAIL LEASING

52 Elm Street Westfield, NJ

Downtown
Union County



| 1,850 SF

Street retail space on one of Westfield's most sought after blocks

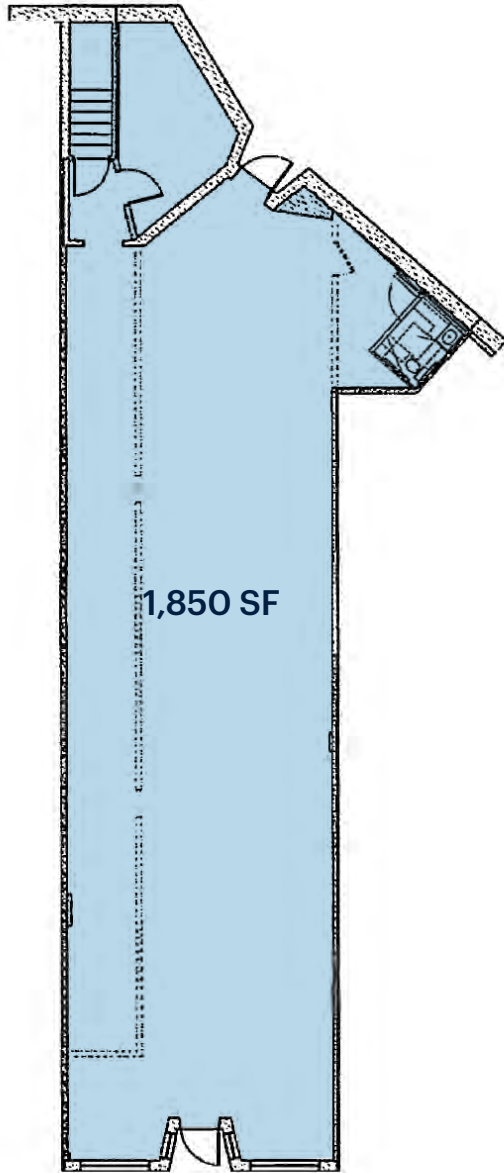
Contact
Exclusive Agents

Lisa Ricca
lricca@ripconj.com | 201.636.7449

Therese O'Brian
tob@ripconj.com | 201.249.6616

Digitally Enhanced

Space Details



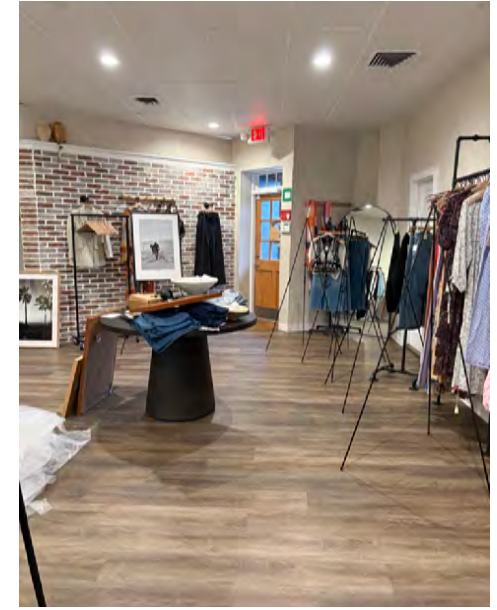
Elm Street

Size	Ground Floor	1,850 SF
Status	Currently The Life Westfield	
Rent	Upon request	
Neighbors	QDOBA Mexican Eats, Trader Joe's, Starbucks, Athleta, Warby Parker, Casa di Pizza, J. McLaughlin, Urban Outfitters, Sweet Waters Steakhouse, Sugaring NYC, sweetgreen, GAP, StretchLab, Faherty, Rumble, Banana Republic, 2nd Street, Chipotle, Millburn Deli	
Comments	Prime opportunity coming soon to one of Westfield's most sought after blocks Central location surrounded by national retailers with excellent visibility from Westfield's main signaled intersection Exceptional demographics in the surrounding area	

Property Imagery

Interior photos

Entrance on Elm Street



Entrance on Quimby Street



Area Neighbors

Surrounding national retailers



RIPCO
RETAIL LEASING

Contact
Exclusive Agents

Lisa Ricca
lricca@ripconj.com | 201.636.7449

Therese O'Brian
tob@ripconj.com | 201.249.6616

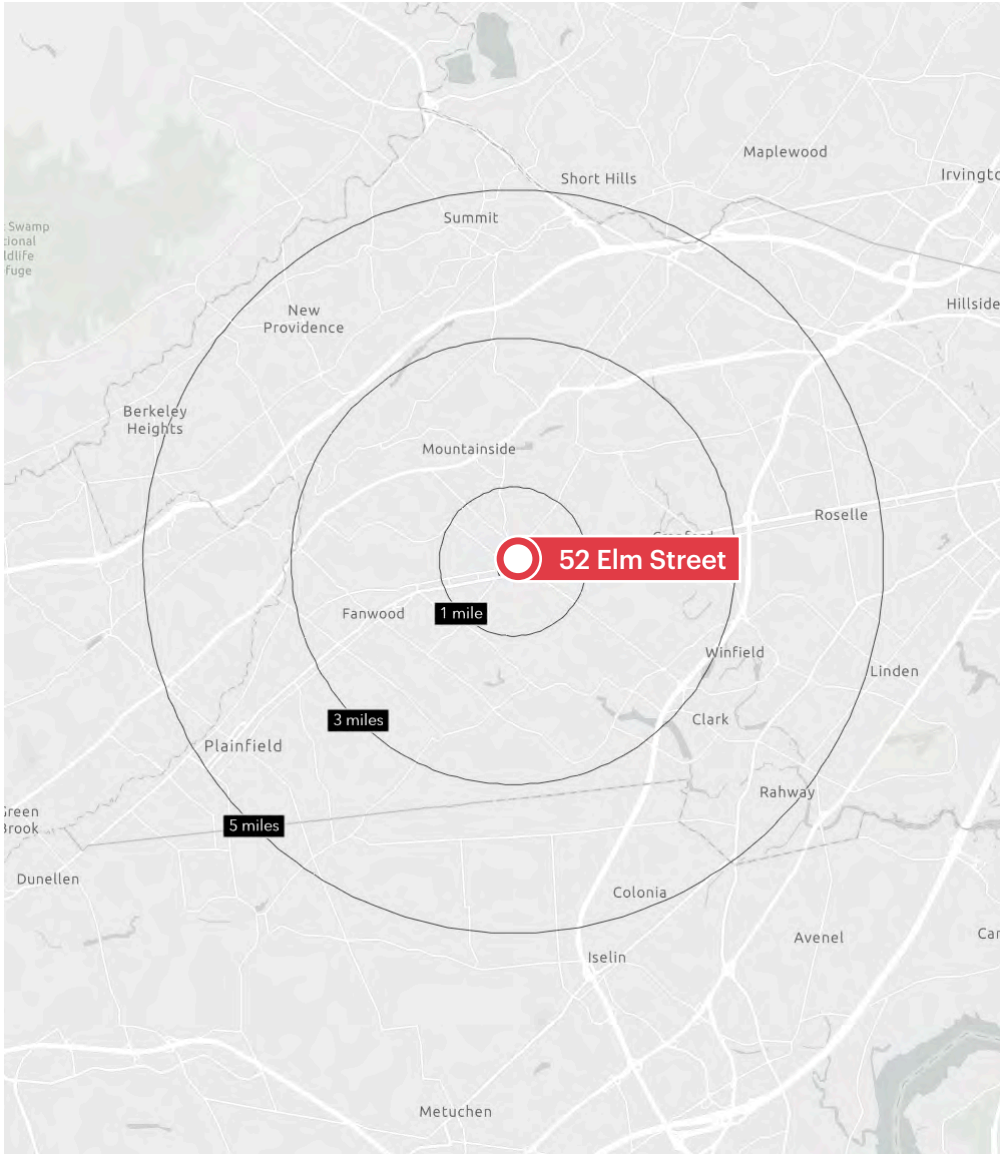
611 River Drive, 3rd Floor, Elmwood Park, NJ 07407 | ripconj.com
Information is from sources deemed reliable; however, accuracy is not guaranteed. Square footage is approximate; Buyer must independently verify and assumes risk for inaccuracies.

Westfield Market



Municipal Parking





Esri 2025 estimates

Area Demographics

2025 ESRI Summary Report

	1 mile	3 miles	5 miles
Total Population	17,601	109,663	362,689
Average Household Income	\$288,244	\$240,490	\$186,660
Total Households	6,200	39,481	128,829
Bachelor's Degree or Higher	8,934	50,761	134,311
Total Employees	16,503	63,870	176,612
Total Daytime Population	25,122	116,340	351,323

Consumer Spending

	1 mile	3 miles	5 miles
Apparel & Services	\$35.6 M	\$188.9 M	\$492.2 M
Furniture	\$12.8 M	\$68.8 M	\$174.5 M
Entertainment	\$60.9 M	\$325.2 M	\$824.8 M
Total Retail Goods	\$467.3 M	\$2.5 B	\$6.4 B
Health Care	\$105.6 M	\$570.2 M	\$1.4 B
Total Budget Expenditure	\$1.5 B	\$7.9 B	\$20.2 B