

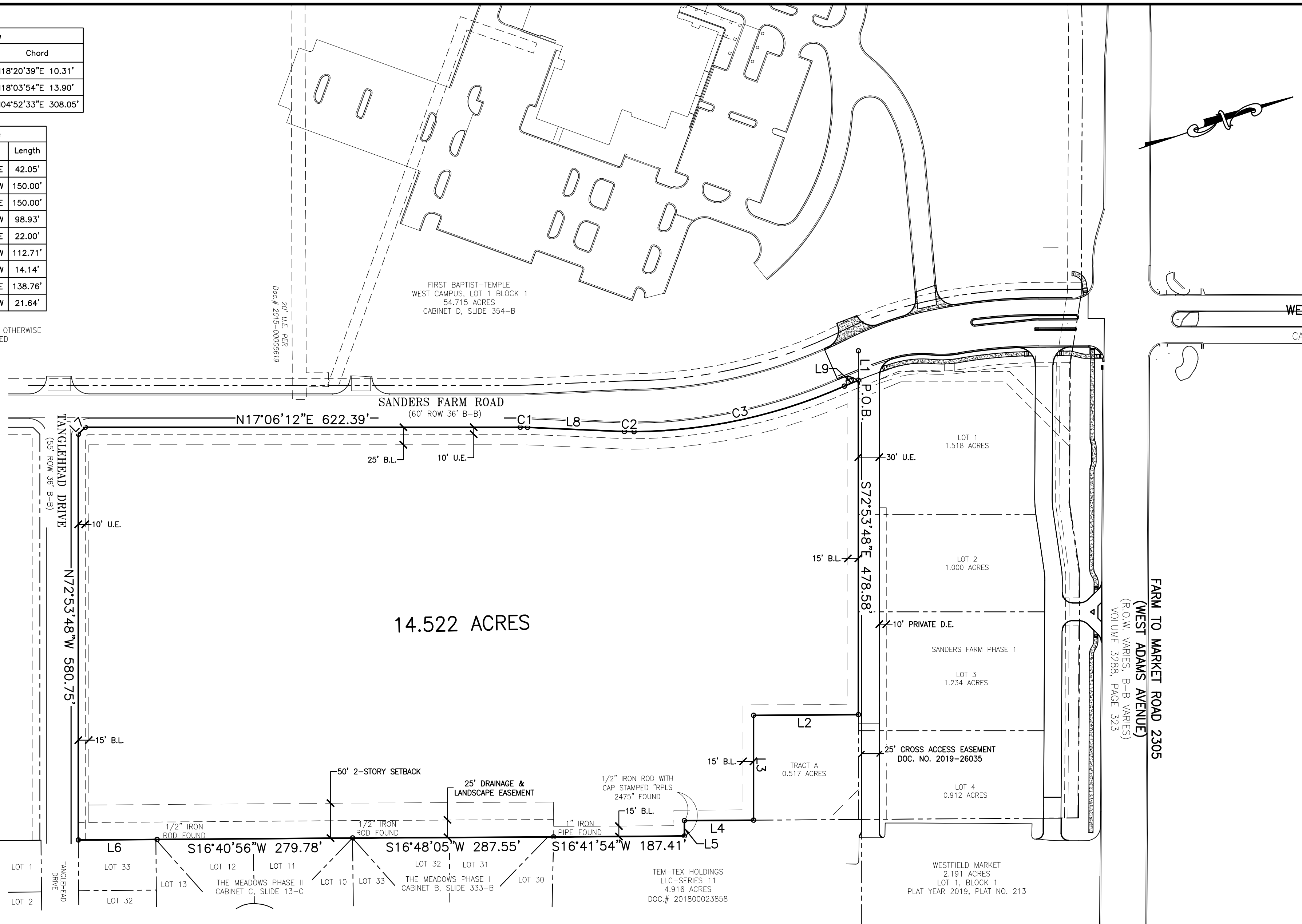
Curve Table			
Curve #	Length	Radius	Chord
C1	10.31'	238.00'	N18°20'39"E 10.31'
C2	13.90'	262.00'	N18°03'54"E 13.90'
C3	310.19'	761.50'	N04°52'33"E 308.05'

Line Table		
Line #	Direction	Length
L1	S72°53'48"E	42.05'
L2	S16°41'54"W	150.00'
L3	S72°53'48"E	150.00'
L4	S16°41'54"W	98.93'
L5	S73°17'59"E	22.00'
L6	S16°43'25"W	112.71'
L7	N27°53'48"W	14.14'
L8	N19°35'05"E	138.76'
L9	N05°53'37"W	21.64'

○ - POINT UNLESS OTHERWISE MENTIONED

Doc # 2019-00005619

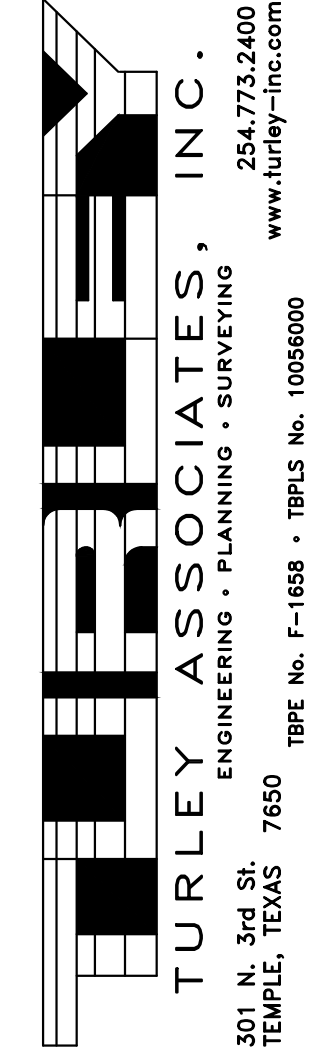
FIRST BAPTIST-TEMPLE
WEST CAMPUS, LOT 1 BLOCK 1
54.715 ACRES
CABINET D, SLIDE 354-B



FBC SANDERS LLC
74.067 ACRES (TRACT TWO)
DOC. NO. 202000070140

14.522 ACRES

FARM TO MARKET ROAD 2305
(WEST ADAMS AVENUE)
(R.O.W. VARIES, B-B VARIES)
VOLUME 3288, PAGE 323



TURLEY ASSOCIATES, INC.
ENGINEERING • PLANNING • SURVEYING
301 N. 3rd St.
TEMPLE, TEXAS 76500
254.773.2400
www.turley-inc.com

© TURLEY ASSOCIATES, INC.
THIS DRAWING IS THE PROPERTY OF TURLEY ASSOCIATES INC. AND MUST BE SURRENDERED UPON REQUEST. THE INFORMATION THEREON MAY NOT BE REPRODUCED WITHOUT THE WRITTEN PERMISSION OF TURLEY ASSOCIATES INC.

EXHIBIT OF:
14.522 ACRES
BALDWIN ROBERTSON SURVEY
ABSTRACT NO. 17
BELL COUNTY, TEXAS

PREPARED FOR:
FBC SANDERS

FOR ILLUSTRATION
ONLY—NOT A
LEGAL SURVEY

REVISIONS

DATE	DESCRIPTION	DFTR

DRAFTSMAN:
MRG
DATE:
11.3.2021
COMPUTER FILE NAME:
TRACT 1
REFERENCE DRAWING NUMBERS:
19-191

JOB NUMBER:
20-3294
DRAWING NUMBER:
203294-C

PAGE #
01

