

CODE INFORMATION

CODE COMPLIANCE

- BUILDING - 2021 IBC
- FIRE SAFETY - 2021 IFC
- MECHANICAL - 2021 IMC
- PLUMBING - 2021 IPC
- ELECTRICAL - 2023 NEC
- ENERGY - 2021 IECC
- ACCESSIBILITY - 2012 TAS

OTHER

- FULLY FIRE SPRINKLERED - YES
- OCCUPANCY GROUP - BUSINESS

OCCUPANCY LOAD

FUNCTION OF SPACE	LOAD FACTOR	AREA (S.F.)	# OF OCCUPANTS
BUSINESS AREAS	150 GROSS	2308	16
CONCENTRATED BUSINESS USE AREA	HEAD COUNT	1325	16
ASSEMBLY - UNCONCENTRATED	15 GROSS	0	0
STORAGE AREAS	300 GROSS	0	0
TOTAL		3633	32

EGRESS

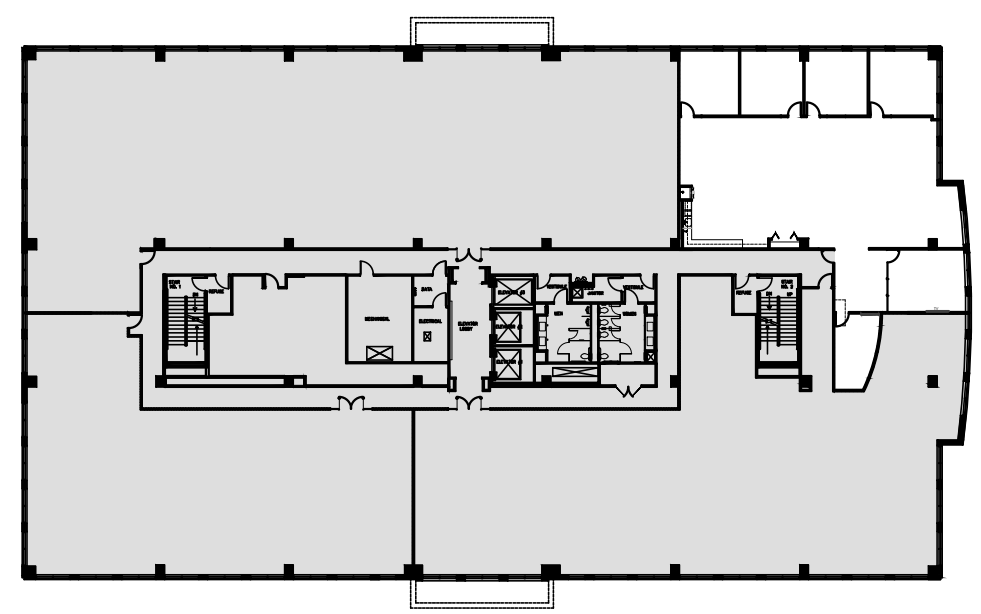
- 100' COMMON PATH OF EGRESS (MAX. ALLOWED)
- 80' COMMON PATH OF EGRESS (ACTUAL)
- 1 EXITS (MIN. REQUIRED)
- 1 EXITS (ACTUAL)
- 50' DEAD END (MAX. ALLOWED)
- 0' DEAD END (ACTUAL)

LEGEND

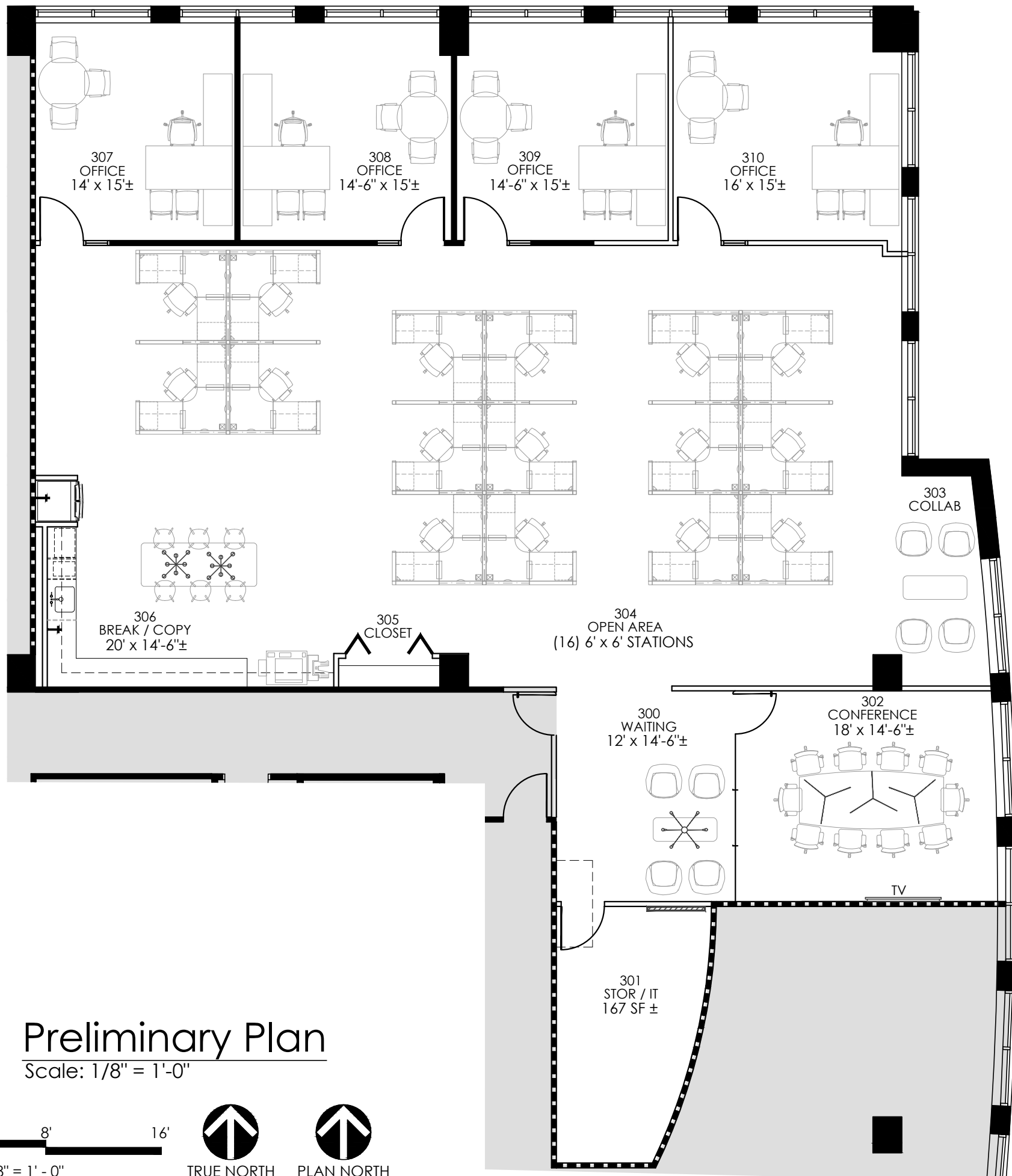
(ALL SYMBOLS MAY NOT APPLY)

- EXISTING PARTITION
- NEW PARTITION
- DEMISING PARTITION W/ SOUND INSULATION
- PARTITION W/ SOUND INSULATION
- HALF-HEIGHT PARTITION
- ONE HOUR PARTITION
- TWO HOUR PARTITION
- SIDELIGHT/WINDOW
- PHONE BOARD
- WATER LINE W/ SHUT-OFF VALVE
- FIRE EXTINGUISHER W/ CABINET
- FIRE EXTINGUISHER ON HOOK

THIS PLAN IS SUBJECT TO APPROVAL BY THE MUNICIPAL CODE AUTHORITIES. THESE DOCUMENTS ARE INCOMPLETE AND MAY NOT BE USED FOR REGULATORY APPROVAL, PERMIT OR CONSTRUCTION. ROOM SIZES ARE APPROXIMATE ONLY AND ARE NOT TO BE USED FOR FINAL DETERMINATION OF FURNITURE SIZES OR PLACEMENT.



Key Plan
Not to Scale



01 Preliminary Plan

Scale: 1/8" = 1'-0"



SCALE: 1/8" = 1'-0"



TRUE NORTH



PLAN NORTH

