

30
16

Government

BOULEVARD

**30,346 SF AVAILABLE
FOR SUBLEASE**

3016 GOVERNMENT BLVD. | MOBILE, AL 36606

FORMER
DEALERSHIP



AUTOMOTIVE

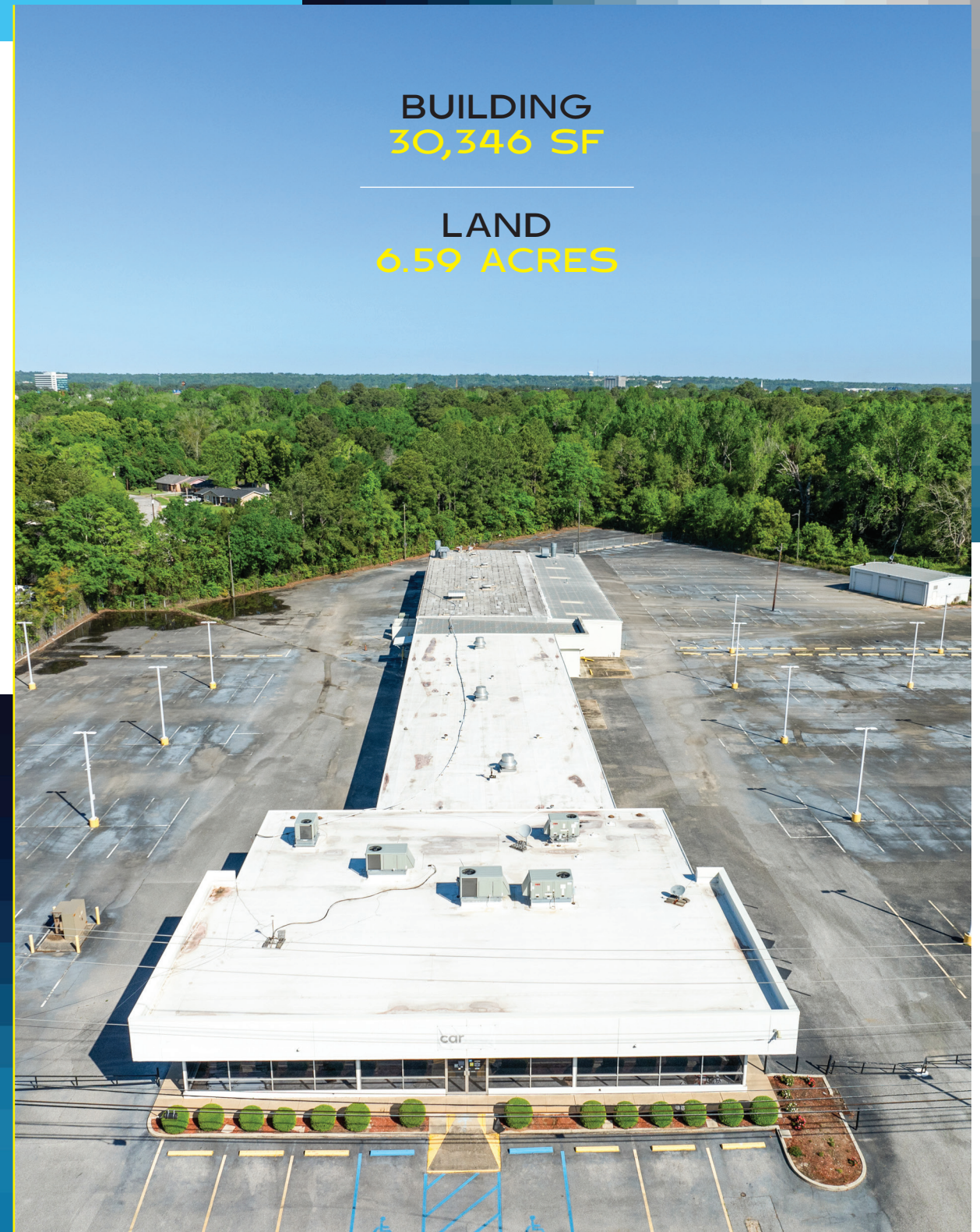
NEWMARK



PROPERTY OVERVIEW

Prime Dealership Opportunity in Mobile, AL

Available for sublease through June 2039, this impressive former dealership at 3016 Government Blvd. in Mobile, AL offers a turnkey opportunity for auto or retail operations in a prime, high-visibility location in auto row. Situated on 6.59 acres, the property features a 30,346 square foot building that includes an 8,280 SF showroom with break and lounge areas, and 21,966 SF of service and parts space. With 497 parking spaces and 34 service doors, it's perfectly equipped to handle high-volume traffic and operations. The site benefits from a daily traffic count of 28,709 vehicles, offering maximum exposure (600' of frontage) and accessibility both eastbound and westbound for growing businesses looking to establish a strong presence in a bustling commercial corridor.



BUILDING
30,346 SF

LAND
6.59 ACRES

PROPERTY SPECS

 **SUBLEASE:**
Through June 2039

 **SERVICE/PARTS:**
21,966 SF

 **BUILDING:**
30,346 SF

 **PARKING SPACES:**
497

 **LAND:**
6.59 acres

 **SERVICE DOORS:**
34

 **SHOWROOM/BREAK/LOUNGE:**
8,280 SF

 **TRAFFIC COUNT:**
28,709 ADT



PROPERTY AERIAL

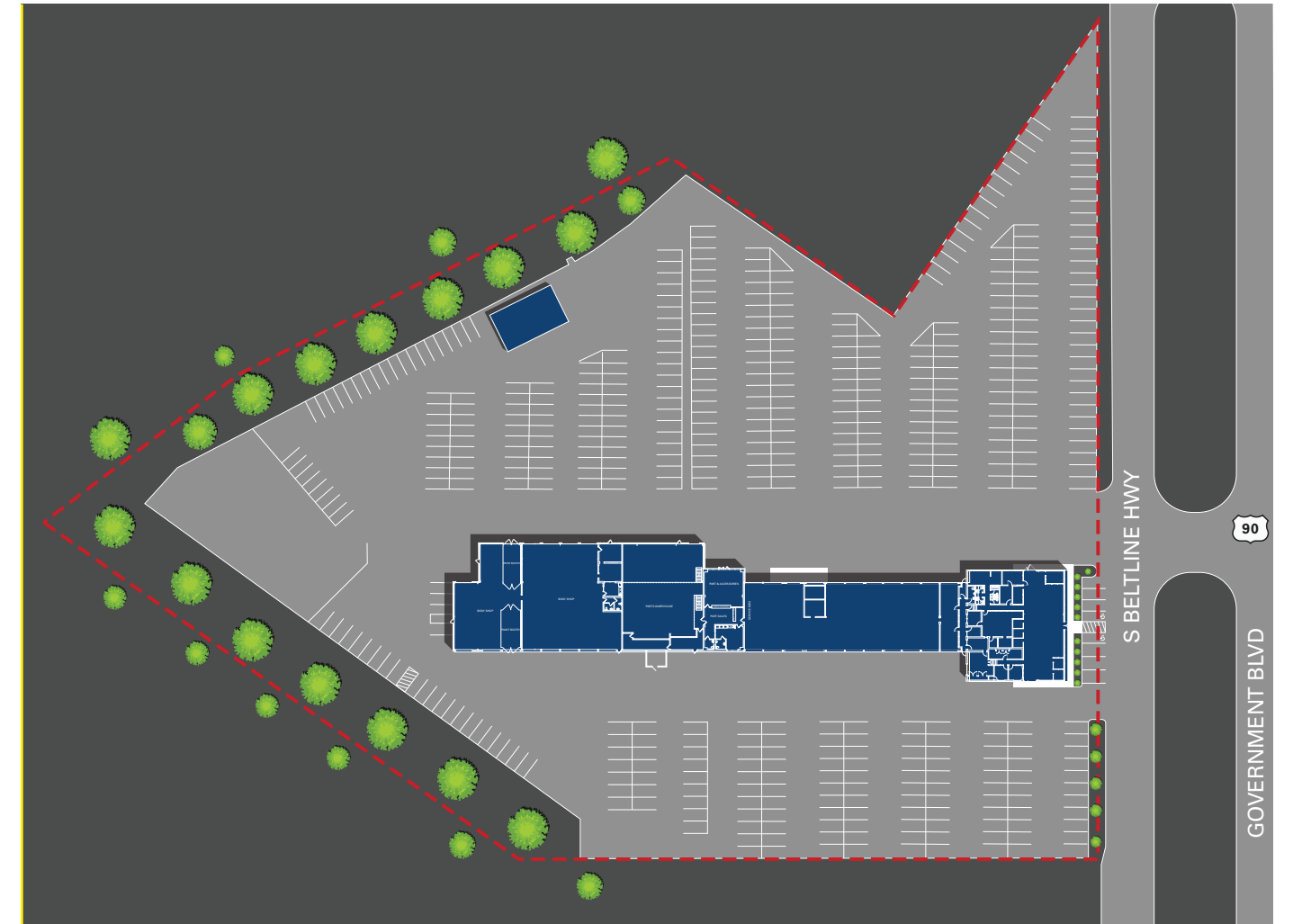


PHOTOS

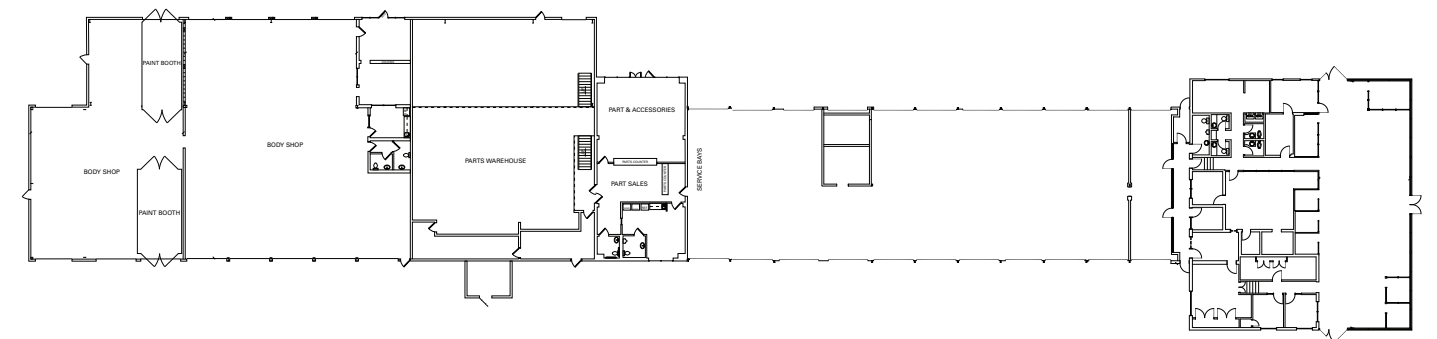


30 Government
16 BOULEVARD

SITE PLAN

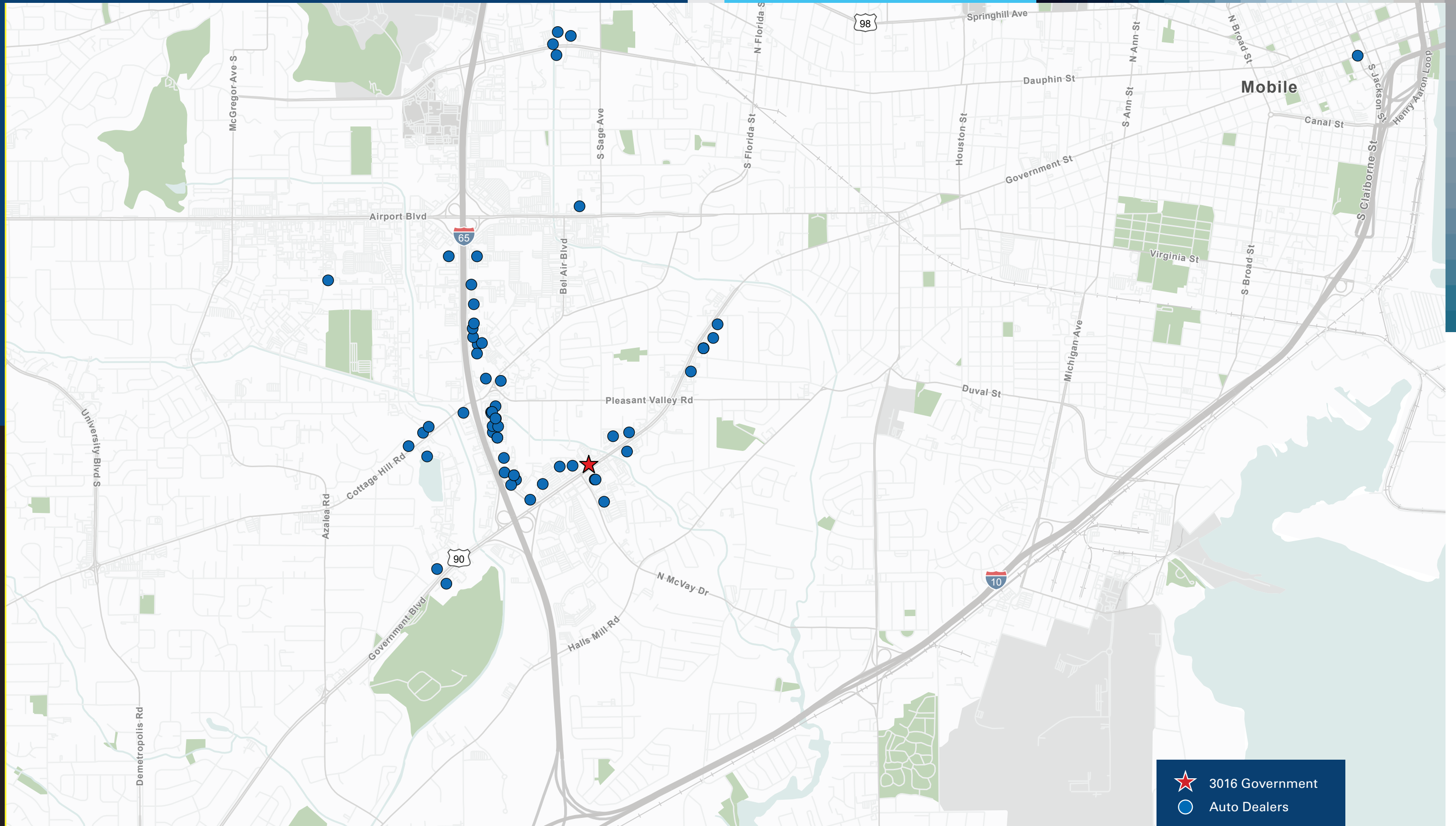


BUILDING FLOOR PLAN



LOCATION MAP

30 Government
16 BOULEVARD



- ★ 3016 Government
- Auto Dealers

30
16

Government

BOULEVARD

3016 GOVERNMENT BLVD. | MOBILE, AL 36606

FORMER
DEALERSHIP



NEWMARK

AUTOMOTIVE

1111 Brickell Ave, Suite 2000 | Miami, FL 33131

Chase Deuschle
SENIOR MANAGING DIRECTOR

chase.deuschle@nmrk.com
t 954-801-7945

Christopher Lyon
SENIOR MANAGING DIRECTOR

christopher.lyon@nmrk.com
t 251-490-5506

These materials are strictly confidential and have been provided to you by Newmark Group, Inc. and/or its affiliates as set out below (together, "Newmark", "we" or "us") and may not be used or relied upon unless expressly agreed in writing with us. These materials and the information contained herein are intended solely for your information and may not be disclosed or distributed to any other person, or otherwise replicated in any form without the prior written consent of Newmark. The materials are expressed as of the date hereof and are subject to change. Newmark assumes no obligation to update or otherwise revise these materials. The information has been obtained from or based upon sources believed by Newmark to be reliable, but Newmark does not warrant its accuracy or completeness and is not responsible for losses or damages arising out of errors, omissions, or changes or from the use of information presented in this document. This material does not purport to contain all of the information that an interested party may desire and, in fact, provides only a limited view. Any headings are for convenience of reference only and shall not be deemed to modify or influence the interpretation of the information.

This material has been prepared by us based on assumptions and parameters determined by us in good faith. The assumptions and parameters used are not the only ones that might reasonably have been selected and therefore no guarantee is given as to the accuracy, completeness or reasonableness of any such quotations, disclosure or analyses. A variety of other or additional assumptions or parameters, or other market factors and other considerations, could result in different contemporaneous good faith analyses or assessment of the transaction described above.