



INFOR COMMONS

380 St. Peter Street ♦ Saint Paul, MN 55102



- ♦ Class A Office Space
- ♦ ENERGY STAR rating from U.S. Environmental Protection Agency (EPA)
- ♦ On-site Property Management
- ♦ LEED Gold: Existing Building - Operations and Maintenance by the U.S. Green Building Council
- ♦ On-site Old National Bank with ATM, Kincaids, Starbucks and Chipotle
- ♦ Easy building access from street and skyway connected
- ♦ Easy Access to I-94, I-35E
- ♦ Near Ramsey County Courthouse

FOR LEASE

♦ www.inforcommons.com

JASON A. BUTTERFIELD
(952) 460-9830
jason.butterfield@frauenshuh.com

ESTD  1983
F R A U E N S H U H
COMMERCIAL REAL ESTATE

TOM STELLA
(651) 734-2383
tom.stella@cushwake.com
CUSHMAN & WAKEFIELD

INFOR COMMONS

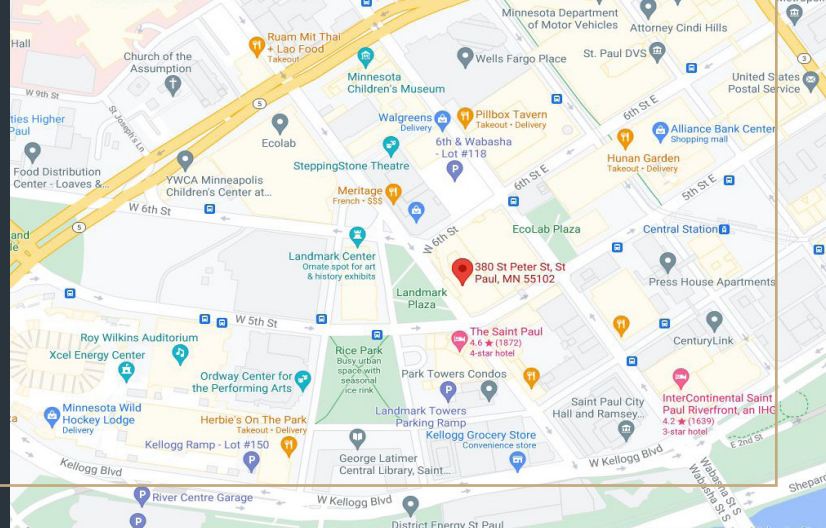
380 St. Peter Street ♦ Saint Paul, MN 55102

◆ BUILDING DETAILS

- Building Size/Floors: 430,000 SF/13 Stories
 - Net Rental Rate: \$16.75 per RSF
 - 2026 Estimated Tax & Ops: \$15.63 per RSF
- Available Space:
- | | |
|------------|--------------------------|
| Suite 400 | 34,129 RSF |
| Suite 705 | 8,423 RSF |
| Suite 710 | 6,498 RSF |
| Suite 740 | 12,905 RSF |
| Suite 1060 | 9,624 RSF |
| Suite 1150 | 17,903 RSF to 34,534 RSF |
| Suite 1200 | Up to 17,577 RSF |

◆ AMENITIES

- The building is open 24 hours a day, 7 days a week. On-site guard services are provided 24 hours a day
- State-of-the-art on-site energy management system capable of providing after hours tenant controlled HVAC
- On-site Old National Bank with ATM, Kincaids, Starbucks, and Chipotle
- Fitness Center with locker rooms, showers and an infrared sauna
- Connected to 1,000 stall city owned and controlled parking ramp
- Located across from Rice Park near fine restaurants, hotels, museums, and the State Capitol
- Enclosed loading dock with capacity for semi trailer (16' high and 28' wide door entrance)
- Building Conference Facility



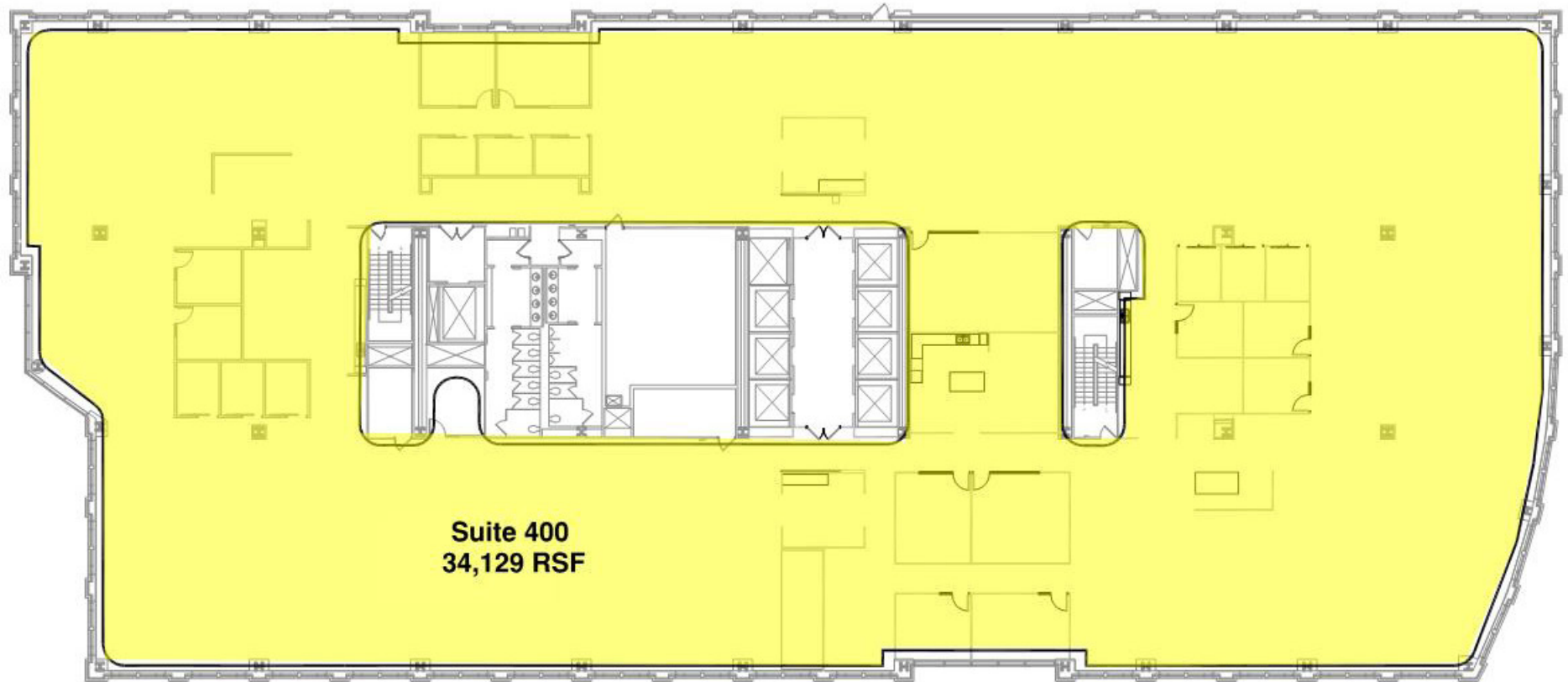
FRAUENSHUH

COMMERCIAL REAL ESTATE

www.frauenshuh.com

7101 W. 78th Street ♦ Minneapolis, MN

INFOR COMMONS ♦ FOR LEASE ♦ FOURTH FLOOR
380 St. Peter Street ♦ St. Paul, MN 55102 ♦ www.inforcommons.com

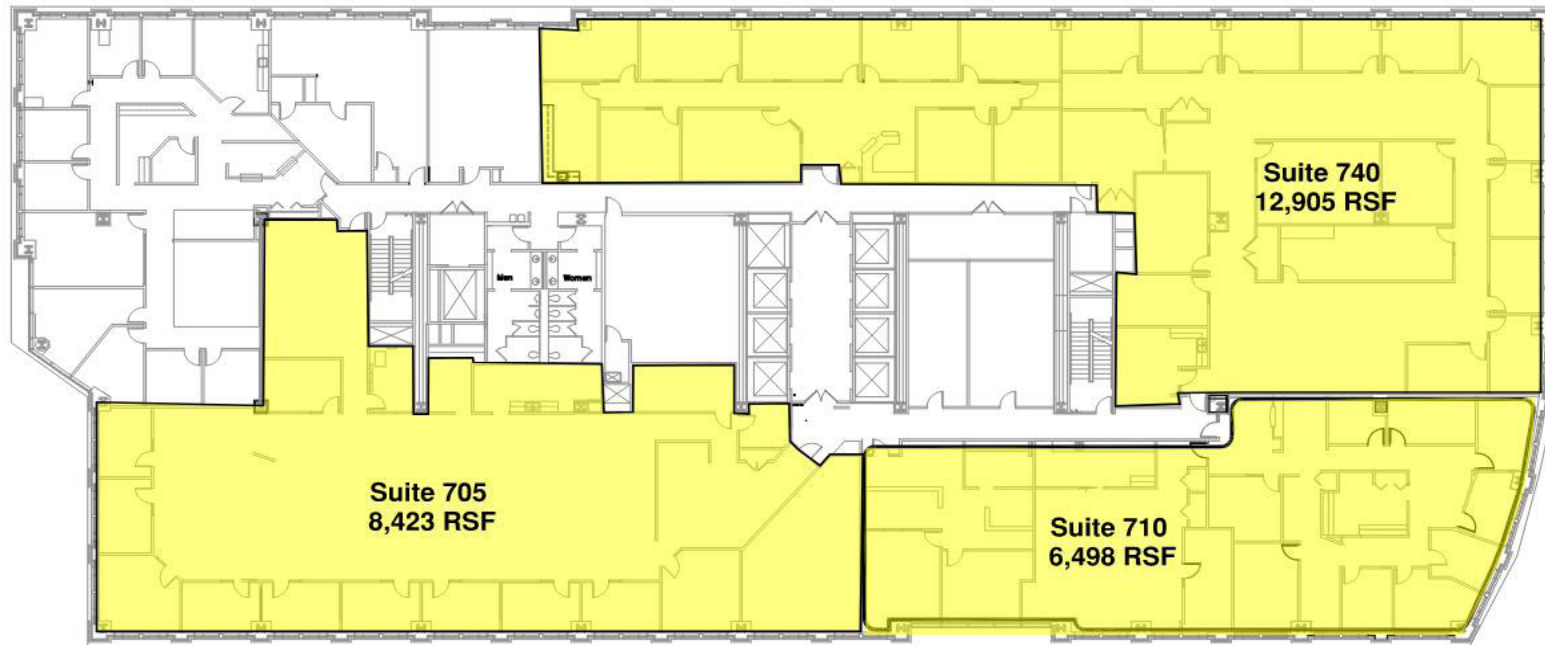


JASON A. BUTTERFIELD
(952) 460-9830
jason.butterfield@frauenshuh.com



TOM STELLA
(651) 734-2383
tom.stella@cushwake.com
CUSHMAN & WAKEFIELD

INFOR COMMONS ♦ FOR LEASE ♦ SEVENTH FLOOR
380 St. Peter Street ♦ St. Paul, MN 55102 ♦ www.inforcommons.com



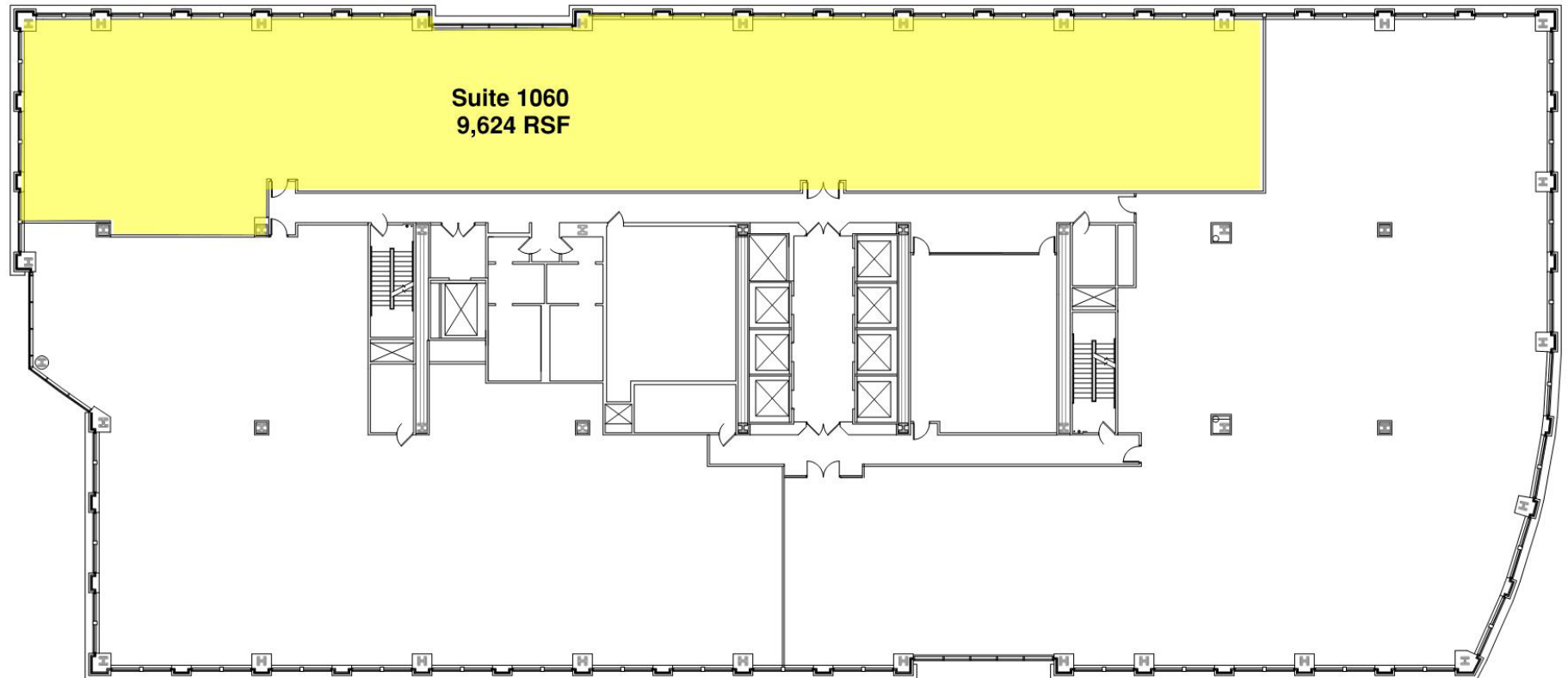
JASON A. BUTTERFIELD
(952) 460-9830
jason.butterfield@frauenshuh.com



TOM STELLA
(651) 734-2383
tom.stella@cushwake.com
CUSHMAN & WAKEFIELD

INFOR COMMONS ♦ FOR LEASE ♦ SUITE 1050

380 St. Peter Street ♦ St. Paul, MN 55102 ♦ www.inforcommons.com



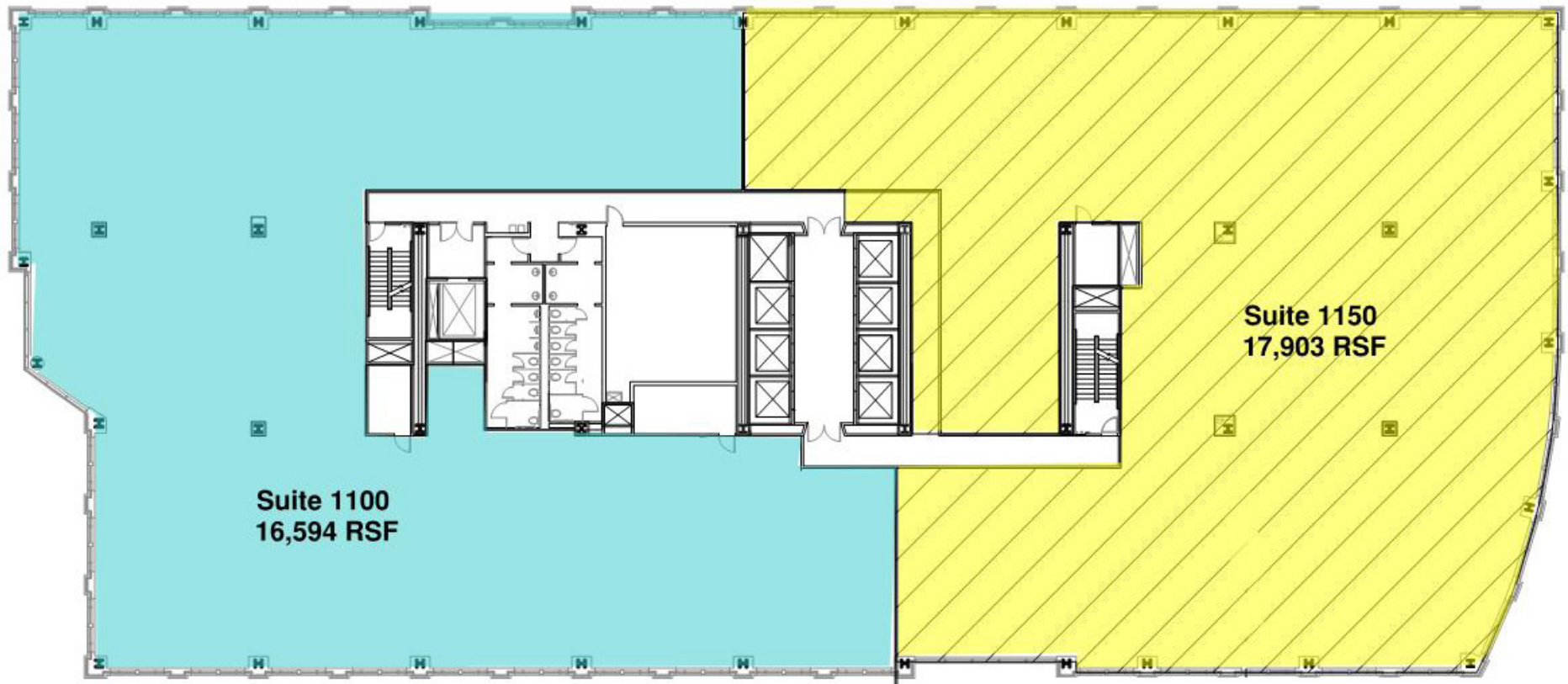
JASON A. BUTTERFIELD
(952) 460-9830
jason.butterfield@frauenshuh.com



TOM STELLA
(651) 734-2383
tom.stella@cushwake.com
CUSHMAN & WAKEFIELD

INFOR COMMONS ♦ FOR LEASE ♦ SUITE 1150

380 St. Peter Street ♦ St. Paul, MN 55102 ♦ www.inforcommons.com



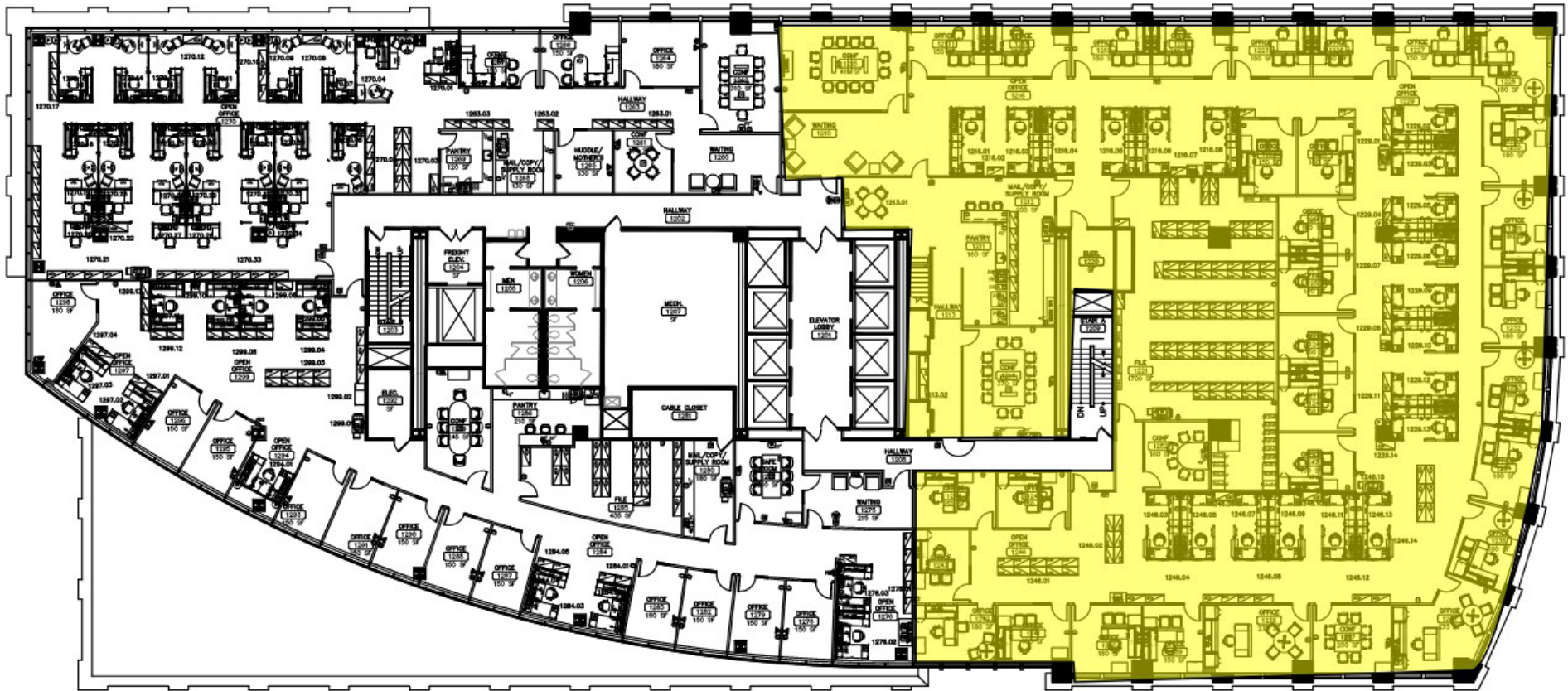
* Potential Full Floor For 34,497 RSF

JASON A. BUTTERFIELD
(952) 460-9830
jason.butterfield@frauenshuh.com



TOM STELLA
(651) 734-2383
tom.stella@cushwake.com
CUSHMAN & WAKEFIELD

INFOR COMMONS ♦ FOR LEASE ♦ SUITE 1200
380 St. Peter Street ♦ St. Paul, MN 55102 ♦ www.inforcommons.com



JASON A. BUTTERFIELD

(952) 460-9830

jason.butterfield@frauenshuh.com



FRAUENSHUH

COMMERCIAL REAL ESTATE

TOM STELLA

(651) 734-2383

tom.stella@cushwake.com
CUSHMAN & WAKEFIELD