

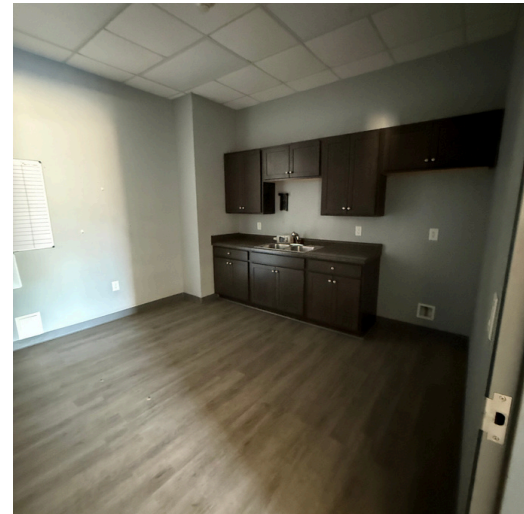
HIGHLY VISIBLE ROCKDALE CO PROPERTY



2101 SE DOGWOOD
INDUSTRIAL CIRCLE
CONYERS, GA

\$1,500,000

- 1.21 acres on north side of I-20
- 4,000 sq ft of warehouse, office, breakroom/kitchen, customer waiting area, and storage space
- Five drive-in doors



Matthew Smith

Georgia Premier Real Estate Advisors

706-340-4724

matthew.smith@georgiapremierrealestate.com

GEORGIA PREMIER

— REAL ESTATE ADVISORS —



Matthew Smith

Georgia Premier Real Estate Advisors

706-340-4724

matthew.smith@georgiapremierrealestate.com