

PREMIUM INDUSTRIAL PROPERTY IN CLACKAMAS

Three Sisters Building 14200 SE 98th Court, Clackamas OR 97015

FOR LEASE



Three Sisters Building is a 26,000 SF industrial / flex building in desirable suburban Clackamas, Oregon.

This free-standing, reinforced concrete building is located just minutes from I-205, Highway 212, and Highway 224. With abundant parking, 3-phase power, approximately 17' clearance height, and grade level loading doors, this property is ideally suited for various industrial and office purposes.

Tricia Anderson
tricia@northrimpx.com | [503.525.1927](tel:503.525.1927)



northrimpx.com

819 SE Morrison Street, Ste 110, Portland OR 97214 | [503.525.1925](tel:503.525.1925)
Matthew Schweitzer | matt@northrimpx.com | [503.381.3134](tel:503.381.3134)



PREMIUM INDUSTRIAL PROPERTY IN CLACKAMAS

Three Sisters Building 14200 SE 98th Court, Clackamas OR 97015

FOR LEASE



Property and Location Details

- Free-standing reinforced concrete building
- Grade level doors and drive-in bays
- Approx. 17' clearance height
- 3-Phase power
- Fire sprinklers
- Abundant parking
- Easy access to I-205, Highway 212, and Highway 224
- Locally owned and professionally managed

Demographics (within 1 mile)

- Population (projected 2027): 8,696
- Average Household Income: \$99,096
- Average Resident Age: 38.81

Transportation

- Clackamas Town Center RTD
6 min drive - 1.8 mi
- Milwaukie/Main St. Max Station
11 min drive - 5.0 mi
- Oregon City Amtrack
11 min drive - 5.4 mi
- Portland International Airport
22 min drive - 13.8 mi

Tricia Anderson

tricia@northrimpx.com | [503.525.1927](tel:503.525.1927)

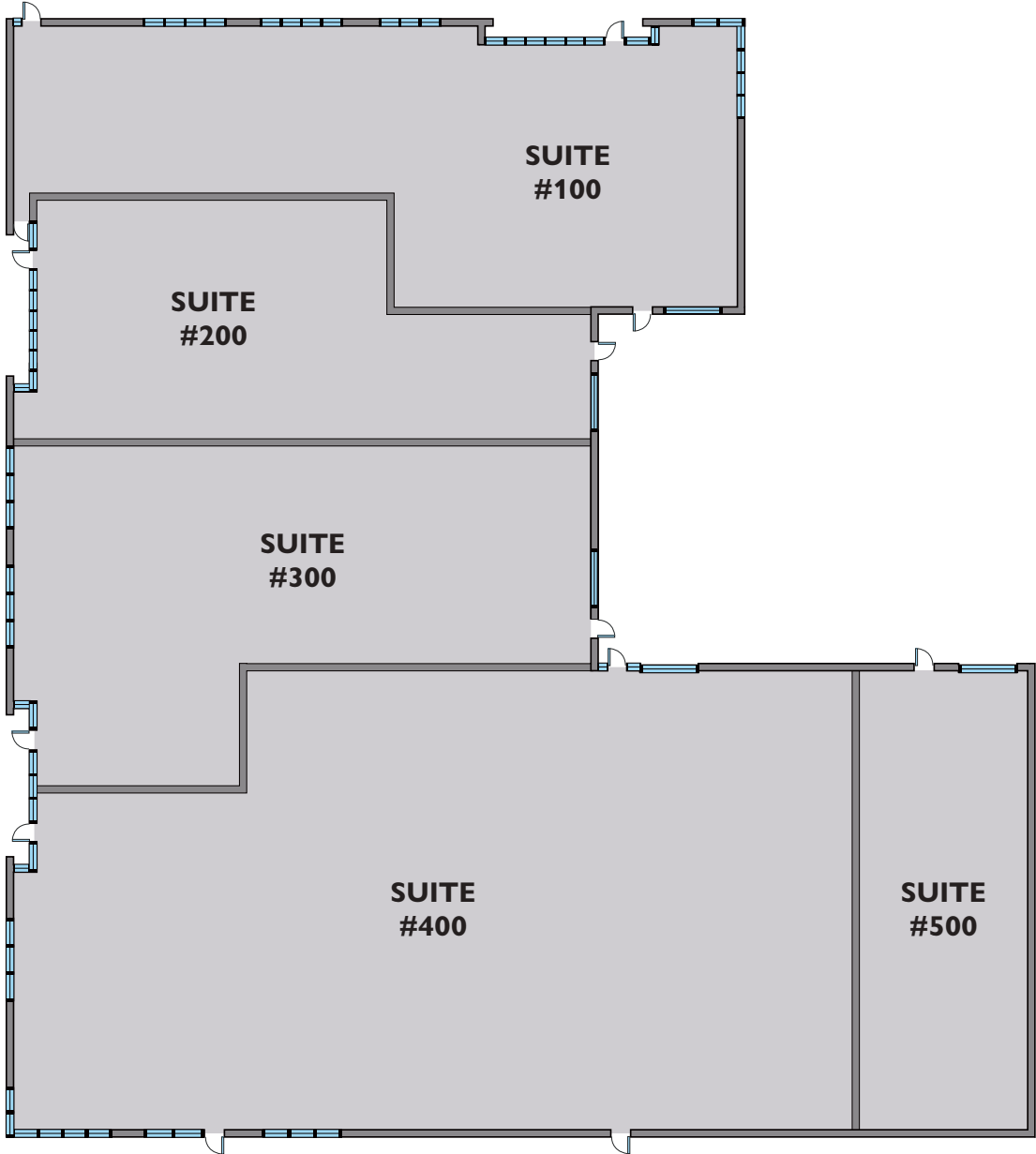


northrimpx.com

819 SE Morrison Street, Ste 110, Portland OR 97214 | [503.525.1925](tel:503.525.1925)

Matthew Schweitzer | matt@northrimpx.com | [503.381.3134](tel:503.381.3134)

FLOOR PLAN



PREMIUM INDUSTRIAL PROPERTY IN CLACKAMAS

Three Sisters Building 14200 SE 98th Court, Clackamas OR 97015

FOR LEASE

Tricia Anderson

tricia@northrimpx.com | [503.525.1927](tel:503.525.1927)

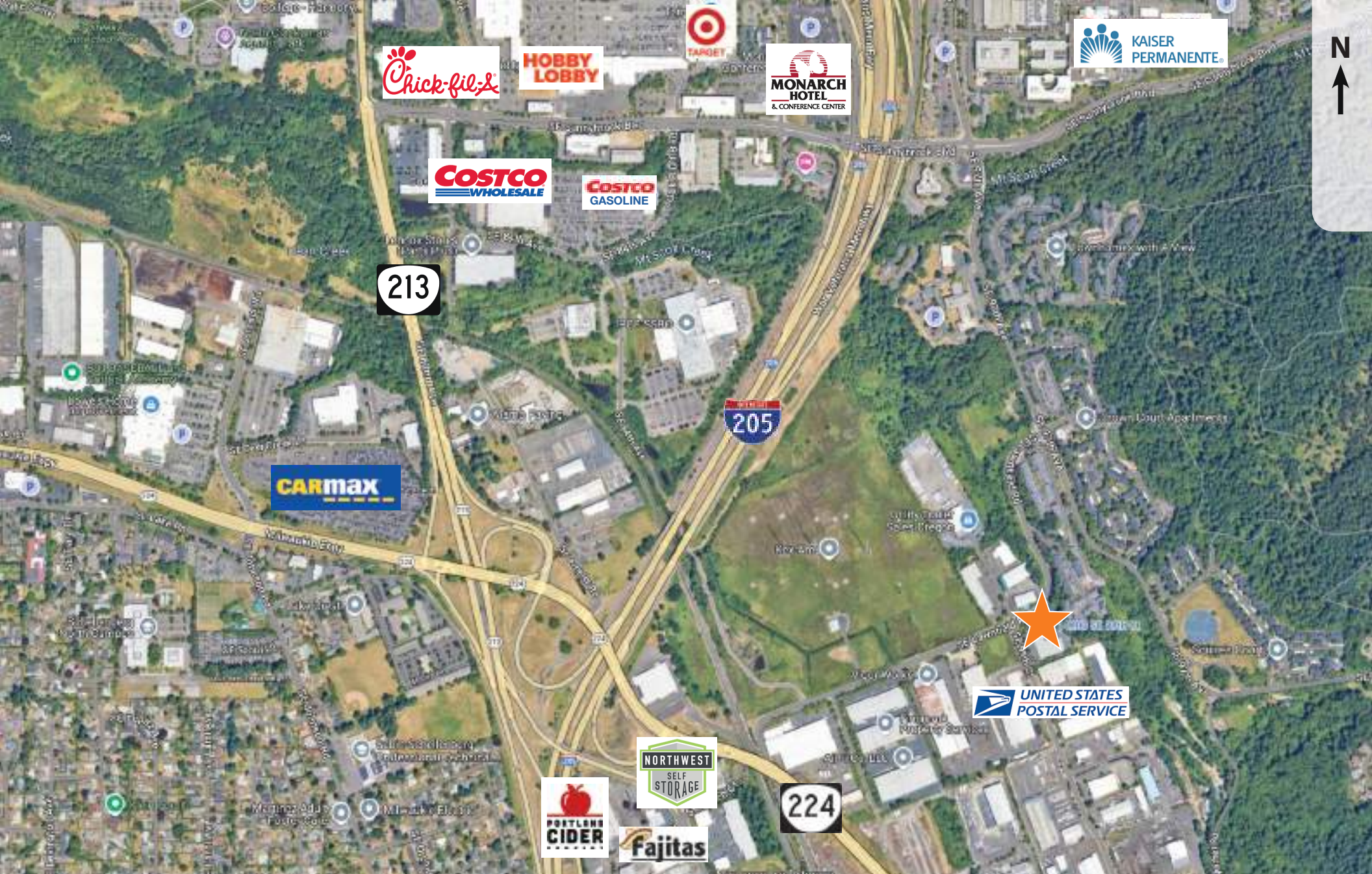


northrimpx.com

819 SE Morrison Street, Ste 110, Portland OR 97214 | [503.525.1925](tel:503.525.1925)

Matthew Schweitzer | matt@northrimpx.com | [503.381.3134](tel:503.381.3134)

The information contained in this package has been obtained from sources we believe to be reliable. While we do not doubt its accuracy, we have not verified it and make no guarantee, warranty or representation about it. It is your sole responsibility to independently confirm its accuracy and completeness. Any projections, opinions, assumptions or estimates used are for example only and do not represent the current or future performance of the property. ©2025 North Rim Commercial Properties



PREMIUM INDUSTRIAL PROPERTY IN CLACKAMAS

Three Sisters Building 14200 SE 98th Court, Clackamas OR 97015

FOR LEASE

Tricia Anderson
tricia@northrimpx.com | [503.525.1927](tel:503.525.1927)



northrimpx.com

819 SE Morrison Street, Ste 110, Portland OR 97214 | [503.525.1925](tel:503.525.1925)
Matthew Schweitzer | matt@northrimpx.com | [503.381.3134](tel:503.381.3134)