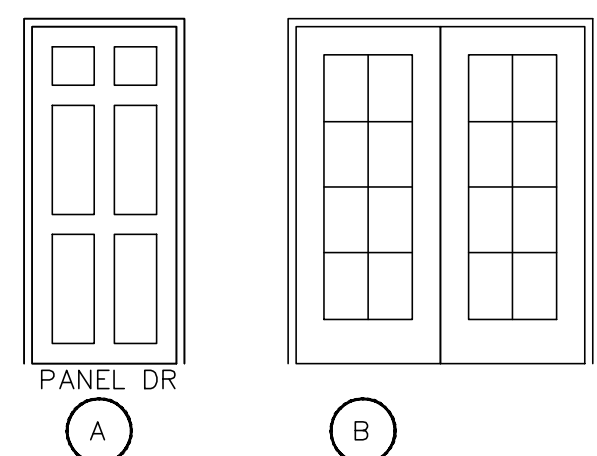


ROOM FINISH SCHEDULE

NO.	TITLE	FLOOR		WALL		CEILING		HEIGHT
		EXPOSED CONC.	WOOD FLOOR	FLOOR TILE & BASE	GYP. BD. PAINTED	EXISTING GYP. BD PAINTED	2X4 GRID CEILING EXISTING	
101	WAITING			●	●	●	●	9'-0"
102	SALON		●	●	●	●	●	9'-0"
103	SERVICE AREA		●	●	●	●	●	9'-0"
104	BREAK ROOM		●	●	●	●	●	9'-0"
105	LAUNDRY		●	●	●	●	●	9'-0"
106	SUITES		●	●	●	●	●	9'-0"
107	RESTROOM		●	●	●	●	●	9'-0"

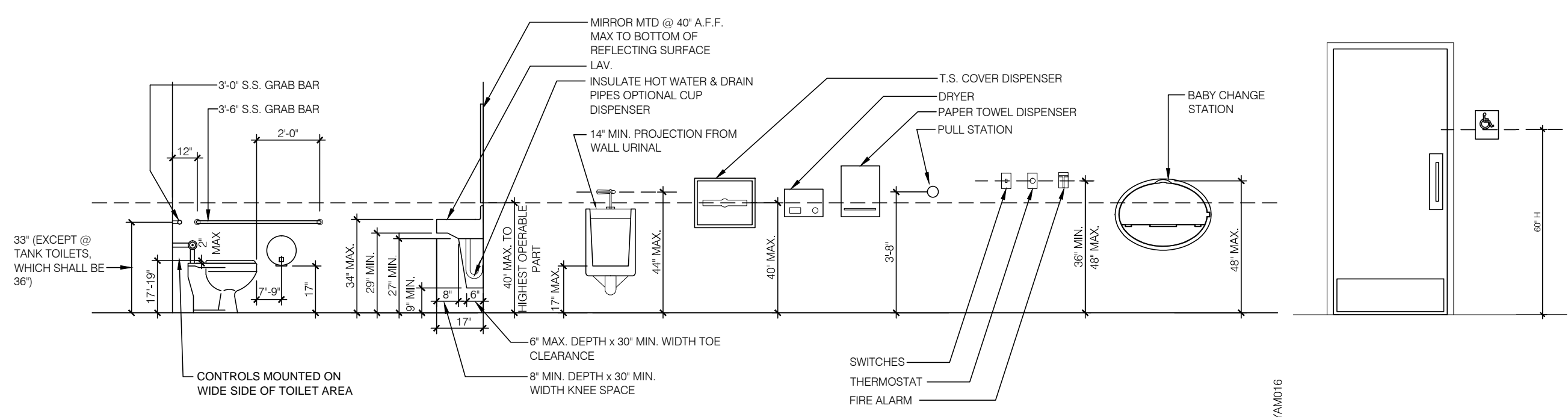
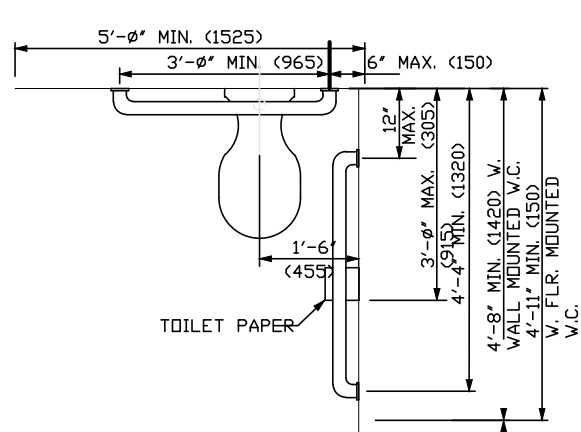
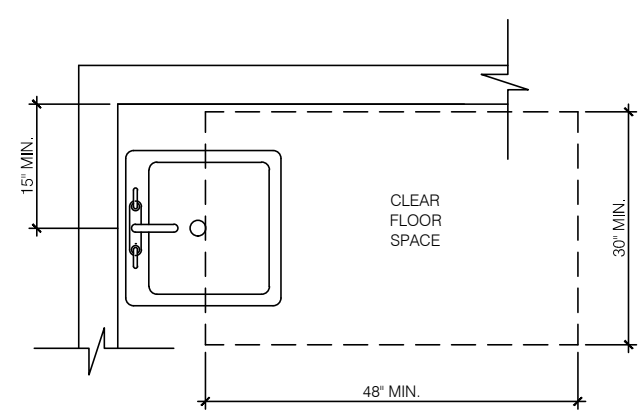
DOOR SCHEDULE

DOOR No.	ROOM NAME	DOOR SIZE		DOOR MATERIAL	FRAME MATERIAL	NOTES
		WIDTH	HEIGHT			
E	ENTRY / REAR - EXISTING	3'-0"	7'-0"			REAR PANIC DEVICE
2-8	TYP. DR.	2'-8"	6'-8"	1.75" A	4 5 6	PRE-HUNG UNIT
2-8	SUITES	2'-8"	6'-8"	1.75" B	4 5 6	PRE-HUNG UNIT



DOOR TYPES

Door hardware must comply with ANSI-A117.1-4.13.9.
 All egress hardware to be direct-acting per IBC 1008.
 Glazing in hazardous locations must comply with IBC 2406.

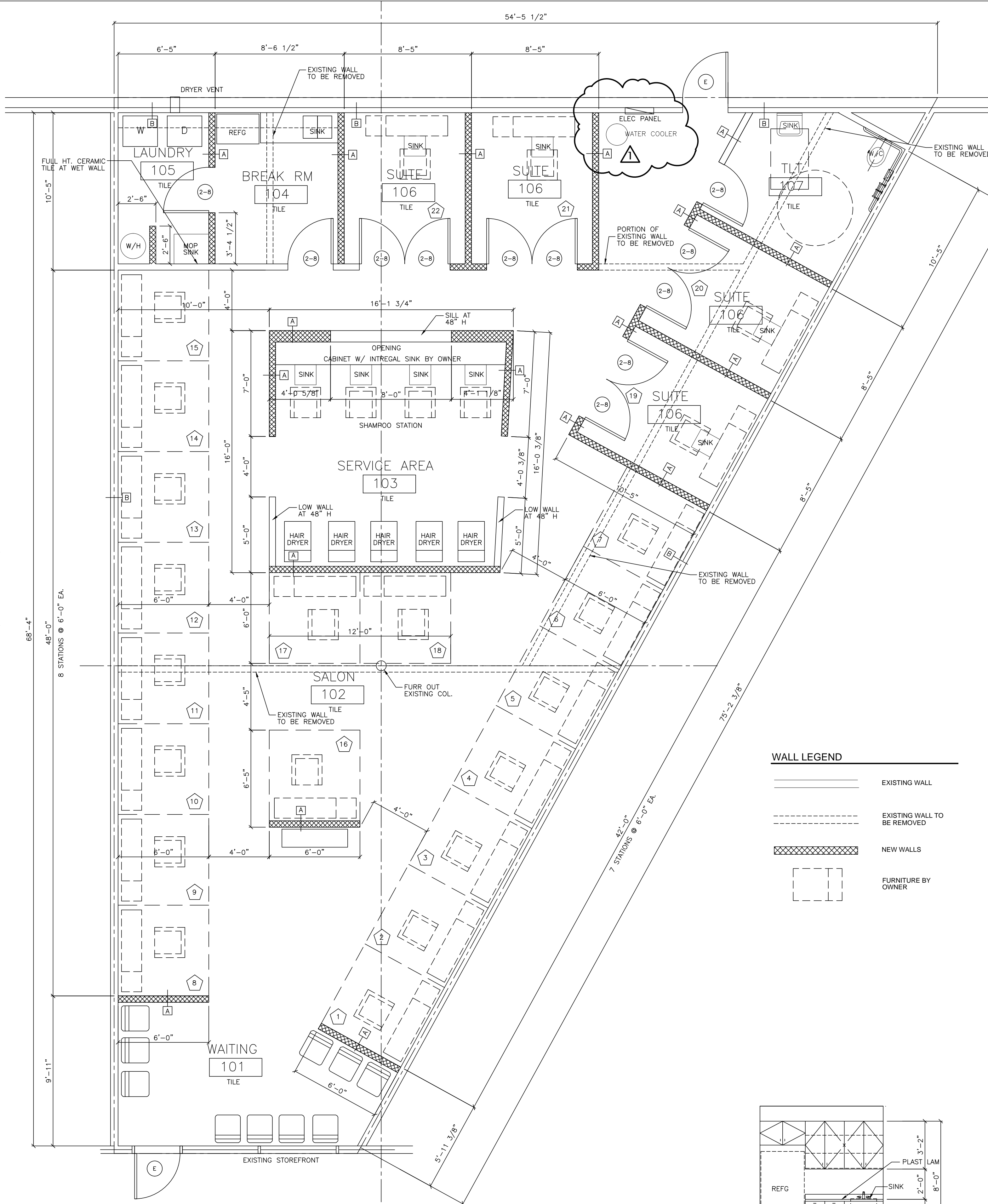


RESTROOM ACCESSORY SCHEDULE

DESCRIPTION	MFGR. MODEL	QTY	REMARKS	PROVIDED	INSTALLED
MIRROR	TO BE CUSTOM CUT LOCALLY BY GLASS CO., ADA COMPLIANT	1	FIELD MEASURE	GENERAL CONTRACTOR	GENERAL CONTRACTOR
HANDRAIL	BOBRICK, # B-6806 SATIN FINISH W/MTG. KITS # 262-2	1	3'-6"	GENERAL CONTRACTOR	GENERAL CONTRACTOR
SEMI-RECESSED FEM. NAPKIN VENDOR AND DISPENSERS	BOBRICK, # B-35704	1	WHERE REQ'D. BY CODE	GENERAL CONTRACTOR	GENERAL CONTRACTOR
SEMI-RECESS MOUNTED PAPER TOWEL DISPOSAL	TO BE DETERMINED BY OWNER	1	TO BE DETERMINED BY OWNER	GENERAL CONTRACTOR	GENERAL CONTRACTOR
SOAP DISPENSER	BOBRICK MOUNTED SOAP DISPENSER B#8221	1	TO BE DETERMINED BY OWNER	GENERAL CONTRACTOR	GENERAL CONTRACTOR
TOILET PAPER DISPENSER	BOBRICK # B4288	1	VERIFY WITH OWNER	GENERAL CONTRACTOR	GENERAL CONTRACTOR
MOUNTED SOAP DISPENSER	BOBRICK # B822	1	VERIFY WITH OWNER	GENERAL CONTRACTOR	GENERAL CONTRACTOR

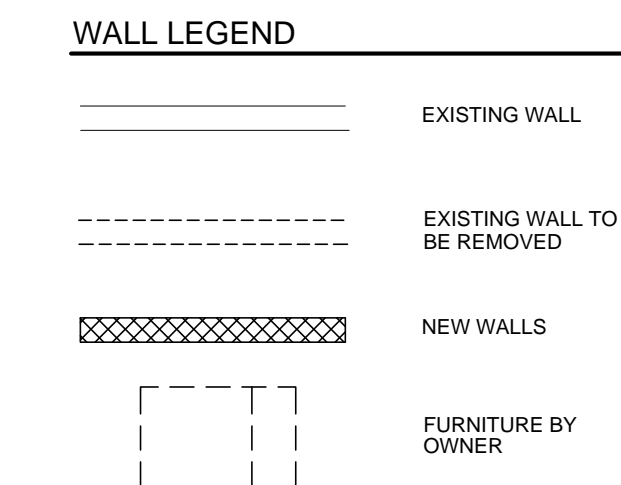
RESTROOM NOTES:

- ALL GRAB BARS SHALL HAVE OUTSIDE DIAMETER NOT LESS THAN 1 1/4" OR MORE THAN 1 1/2".
- ALL GRAB BARS SHALL HAVE A MINIMUM CLEARANCE BETWEEN WALL AND GRAB BARS OF 1 1/2".
- BEND STRESS, SHEAR STRESS, SHEAR FORCE AND TENSILE FORCE OF GRAB BARS SHALL WITHSTAND 250 POUNDS.
- MOUNTING HEIGHTS FOR DOOR HARDWARE ON STALL DOORS SHALL BE 40" A.F.F.
- LEVER HANDLES FOR FAUCET ARE REQUIRED.
- ALL FLUSH CONTROL VALVES SHALL NOT EXCEED 44" A.F.F.
- TOILET ACCESSORIES WITH SIDE REACH TO BE MOUNTED WITH THEIR DISPENSING MECHANISM, START BUTTONS, COIN SLOTS, OR DISPENSER OPENINGS LOCATED 38" TO 54" A.F.F., AND TO ENSURE FORWARD REACH ALSO. THEY MUST BE LOCATED NO MORE THAN 48" A.F.F. WHERE ELEMENTS ARE MOUNTED OVER OBSTRUCTIONS, SUCH AS COUNTERS, THEY MUST BE LOCATED NO MORE THAN 44" A.F.F.



01 FIRST FLOOR PLAN
1/4"=1'-0"

02 BREAK ROOM COUNTER
1/4"=1'-0"



zstudio design
www.texas-permit-drawings.com

2225 S. 1st St.
Garland, Texas 75041
P. 972.897.3966

www.texas-permit-drawings.com

CONSULTANT

GEM SALON
2400 W Pioneer Parkway, Suite 122
Pantego, TX. 76013

REVISIONS

NO.	DATE	DESCRIPTION
1	4-3-14	CITY COMMENTS

PROJECT
GEM SALON
 2400 W Pioneer Parkway
 Suite 122
 Pantego, TX. 7013

ISSUE DATE: 3-4-14

SHEET TITLE

FLOOR PLAN AND DETAILS

SHEET NO.
A1

CITY COMMENTS 4-3-14