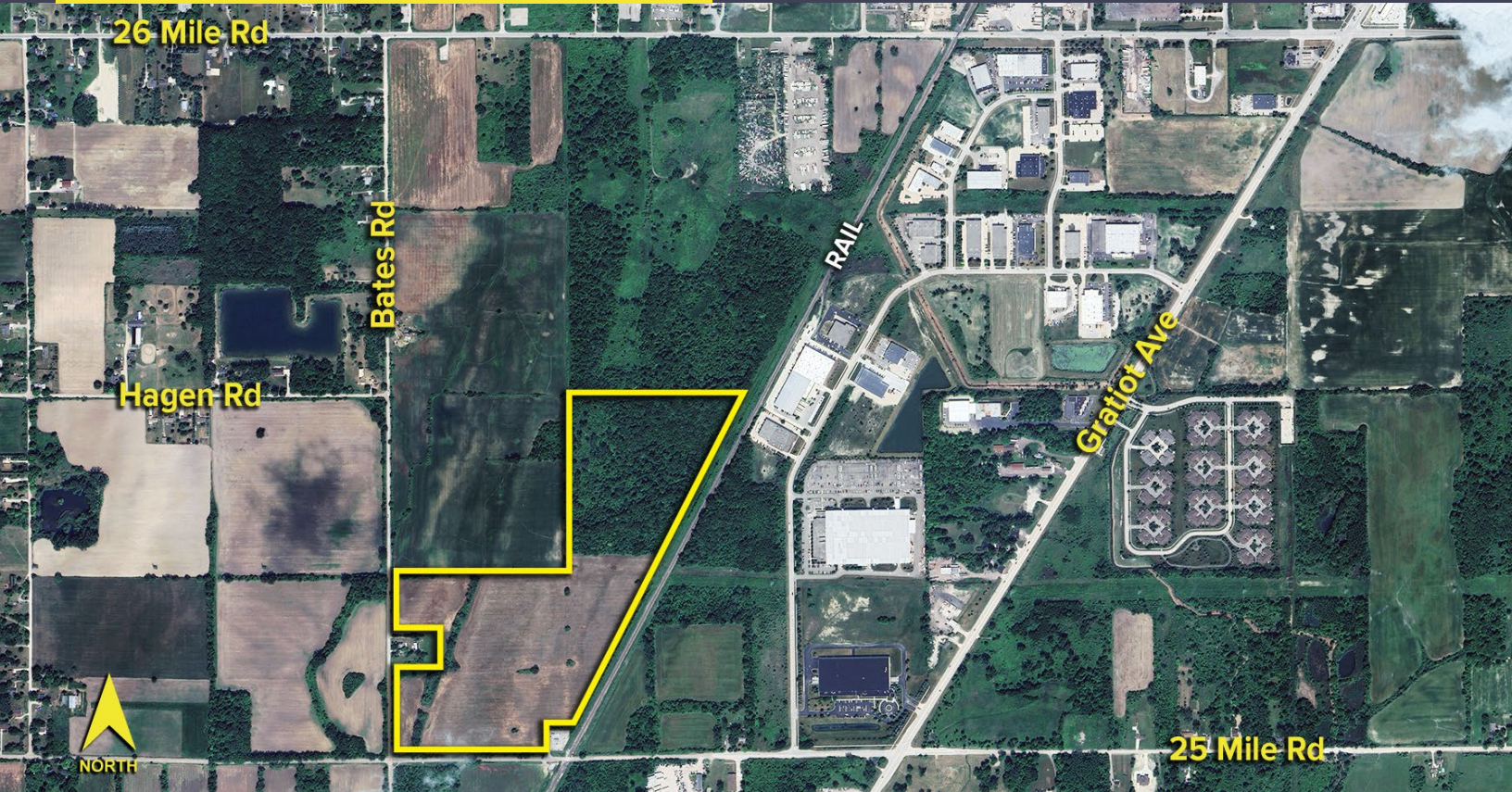


BATES ROAD & TWENTY-FIVE MILE ROAD CHESTERFIELD TWP., MICHIGAN



**SIGNATURE
ASSOCIATES**
KNOW SIGNATURE | KNOW RESULTS

LAND FOR SALE
73.090 Acres Available



PROPERTY FEATURES

- 73.090 acres available
- Approximately 3,200 sq. ft. of rail siding (GTWR) with possible rail access
- Water at 25 Mile Road
- Sewer approximately 1/2 mile away
- Zoned A-1/M-2 use permitted
- Asking Price: \$1,400,000 (\$19,880.72/acre)



For more information, please contact:

CHRIS MONSOUR
(248) 948 0107
cmonsour@signatureassociates.com

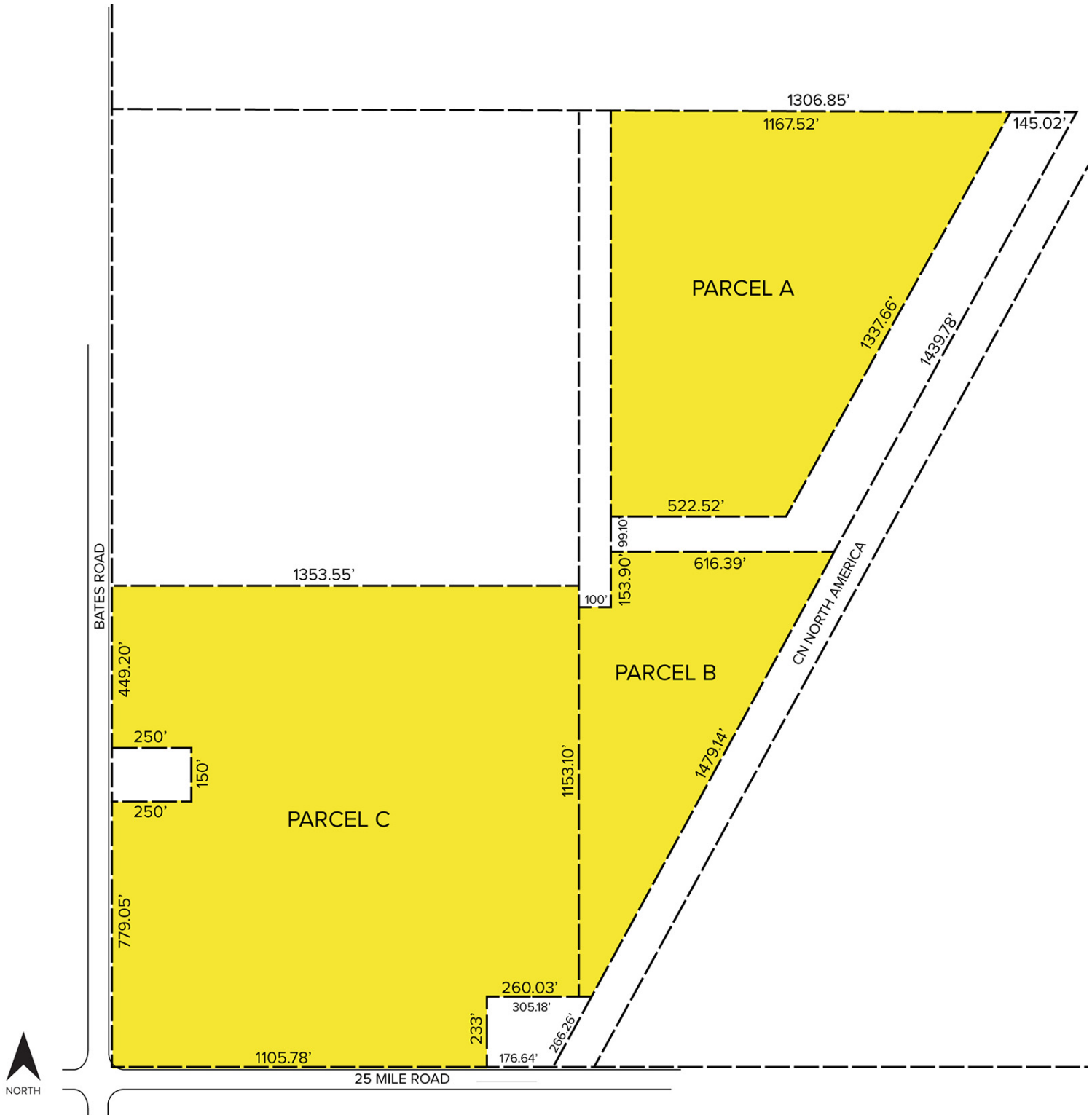
SIGNATURE ASSOCIATES
One Towne Square, Suite 1200
Southfield, MI 48076
www.signatureassociates.com

Bates & Twenty-Five Mile Rd. – Chesterfield Twp. Michigan

Land For Sale

73.090
Acres
AVAILABLE

Site Plan



For more information, please contact:

CHRIS MONSOUR
(248) 948 0107
cmonsour@signatureassociates.com

SIGNATURE ASSOCIATES
One Towne Square, Suite 1200
Southfield, MI 48076
www.signatureassociates.com