



SYLVESTER ASHFORD DRIVE

FORMER ELEMENTARY SCHOOL

526 Sylvester Ashford Drive | Glennville, GA 30427

WIL KACOS | wil@jordantrotter.com | 706.736.1031



JORDAN TROTTER

COMMERCIAL REAL ESTATE



SCAN THE QR TO VIEW THIS LISTING ONLINE

This former elementary school is located in Glennville, GA which is in Tattnall County. Situated about 50 miles west of Savannah and near the Fort Stewart army base, the community offers a suburban-rural mix with a low cost of living, featuring a variety of local restaurants, and churches.

Located at 526 Sylvester Ashford Drive, the school sits on 29 acres and offers multiple buildings including a cafeteria, media center, multiple classrooms, a gymnasium, baseball field, and modular units. The property includes a gated perimeter and expansive parking.

- Building is 91,900 SF • 29.9 acres
- Over 50 classrooms
- Gymnasium is 7,588 SF



TATTNALL COUNTY

APN | 099 078

29.9 AC

91,900 SF

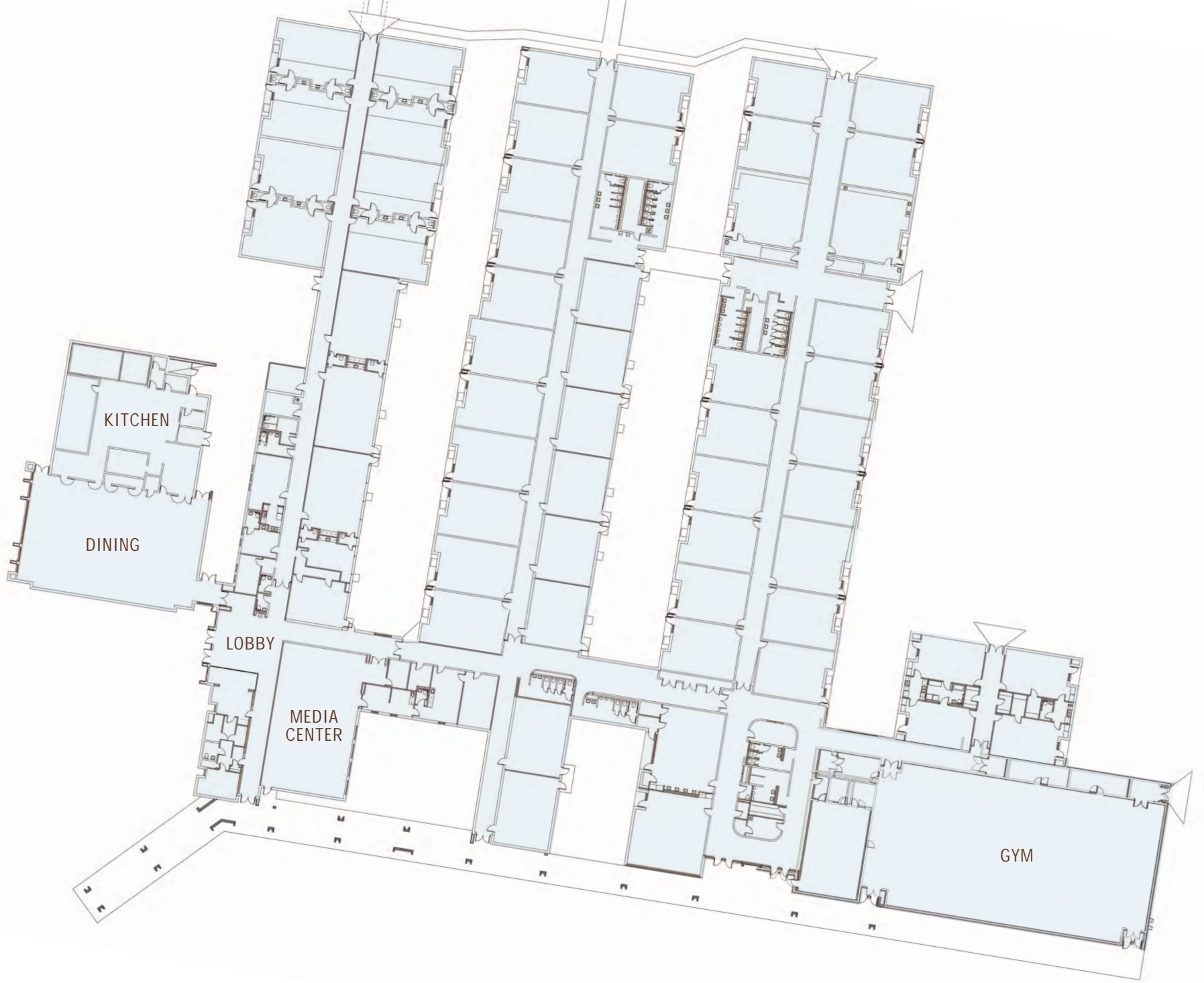
ZONE | R-2, R-1A

PRICE | \$3,500,000



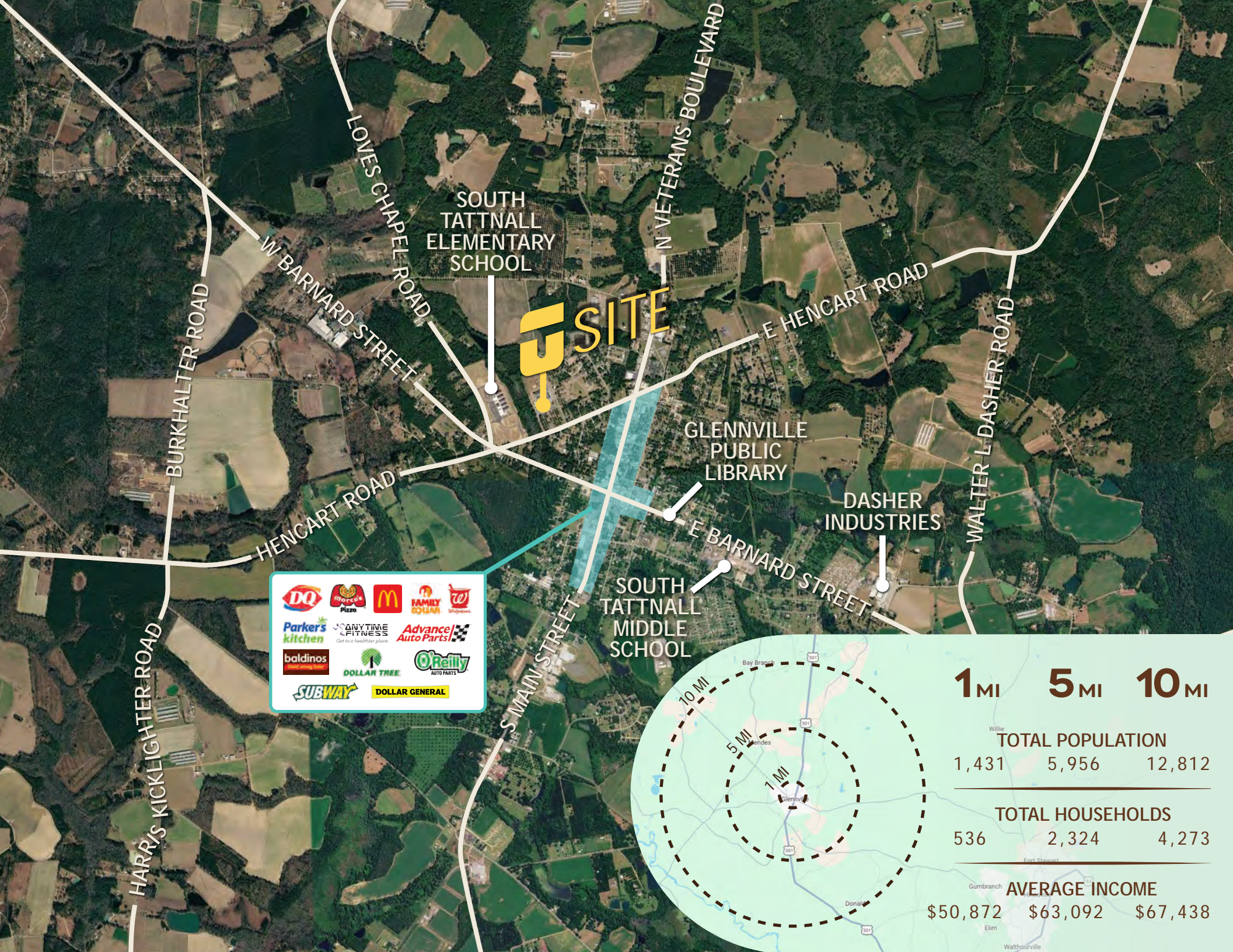
SYLVESTER ASHFORD DRIVE

HENCART ROAD

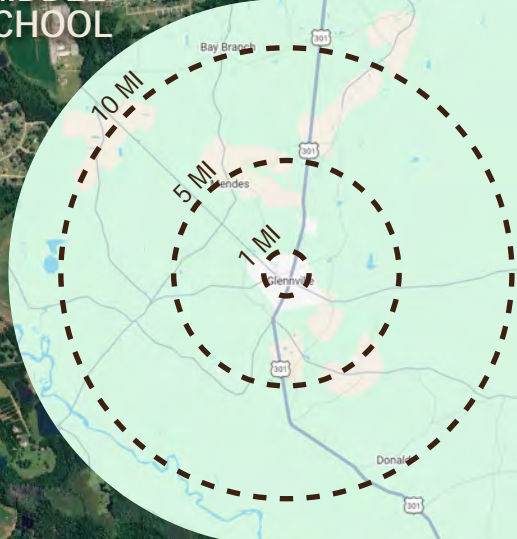


FLOOR PLAN





SITE



	1 MI	5 MI	10 MI
TOTAL POPULATION	1,431	5,956	12,812
TOTAL HOUSEHOLDS	536	2,324	4,273
AVERAGE INCOME	\$50,872	\$63,092	\$67,438