

### 2025 DEMOGRAPHICS

3 Mile | 5 Miles | 10 Miles



#### Population

7,307 | 15,882 | 77,828



#### Daytime Population

5,113 | 8,736 | 43,125



#### Median Household Income

\$82,296 | \$83,863 | \$77,160

## RETAIL FOR LEASE

Hillsboro Plaza

10716 - 10738 MO-21 Business | Hillsboro, Missouri 63050

1,000 - 5,000 SF | Triple Nets: \$1.71/SF (2025 estimate) | Call for Details

### PROPERTY DETAILS

Grocery-anchored shopping center

Full access fronting Business 21

Great visibility

Business 21 - 13,100 VPD

#### Richie Chappuis

314.785.7615

rchappuis@paceproperties.com

#### Connor Wiemann

314.785.7627

cwiemann@paceproperties.com

#### Evan Barnett

314.785.7678

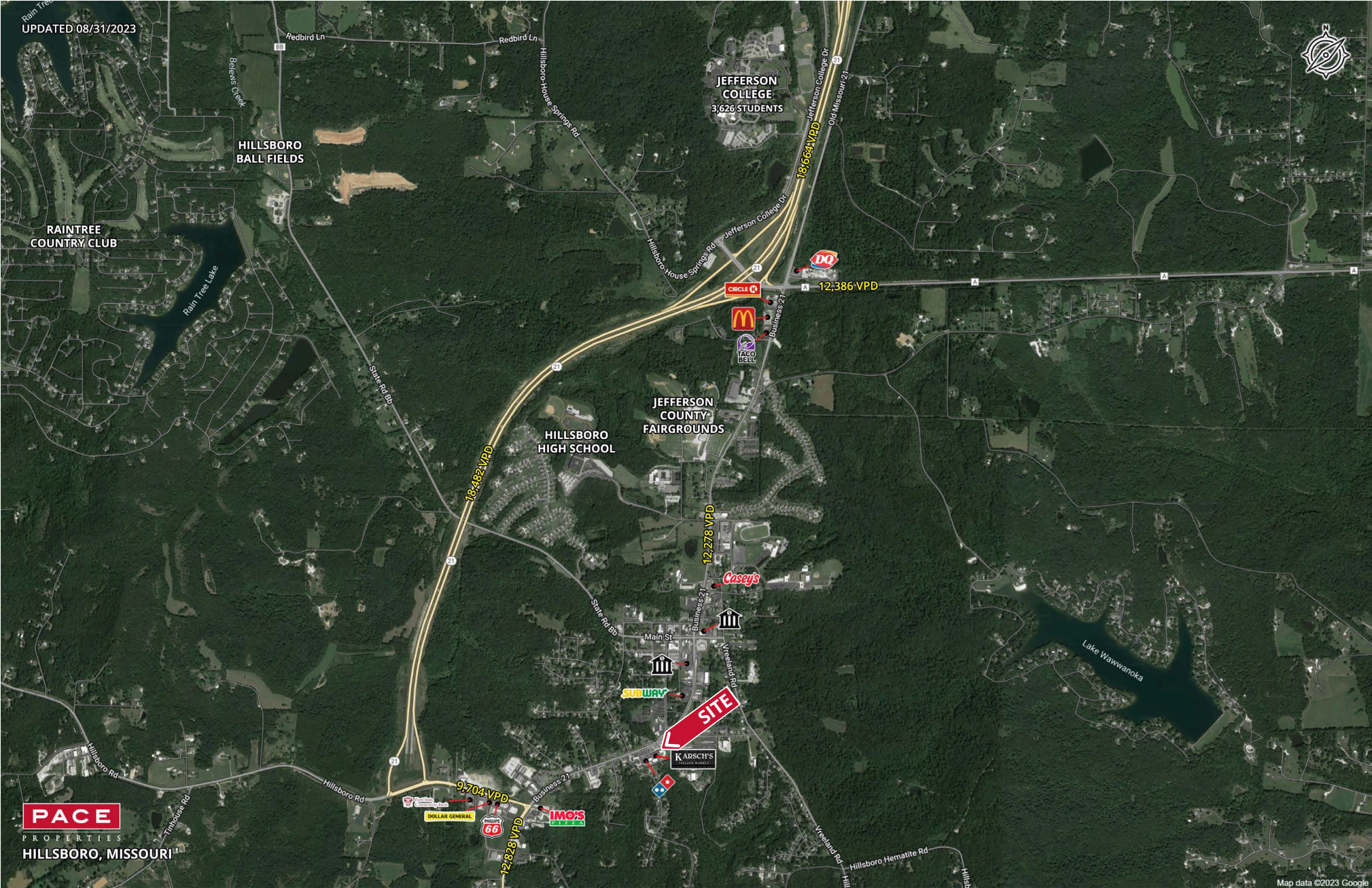
ebarnett@paceproperties.com

PACEPROPERTIES.COM | 314.968.9898

1401 South Brentwood Boulevard, Suite 900 | St. Louis, Missouri 63144

The information contained herein is not warranted, although it has been obtained from the owner/landlord of the subject property or from other sources that Pace Properties, Inc. deems reliable, and is subject to change without notice. Owner/landlord and Pace Properties, Inc. make no representations as to the environmental condition of the subject property and recommend tenant's independent investigation.

# Trade Area Aerial

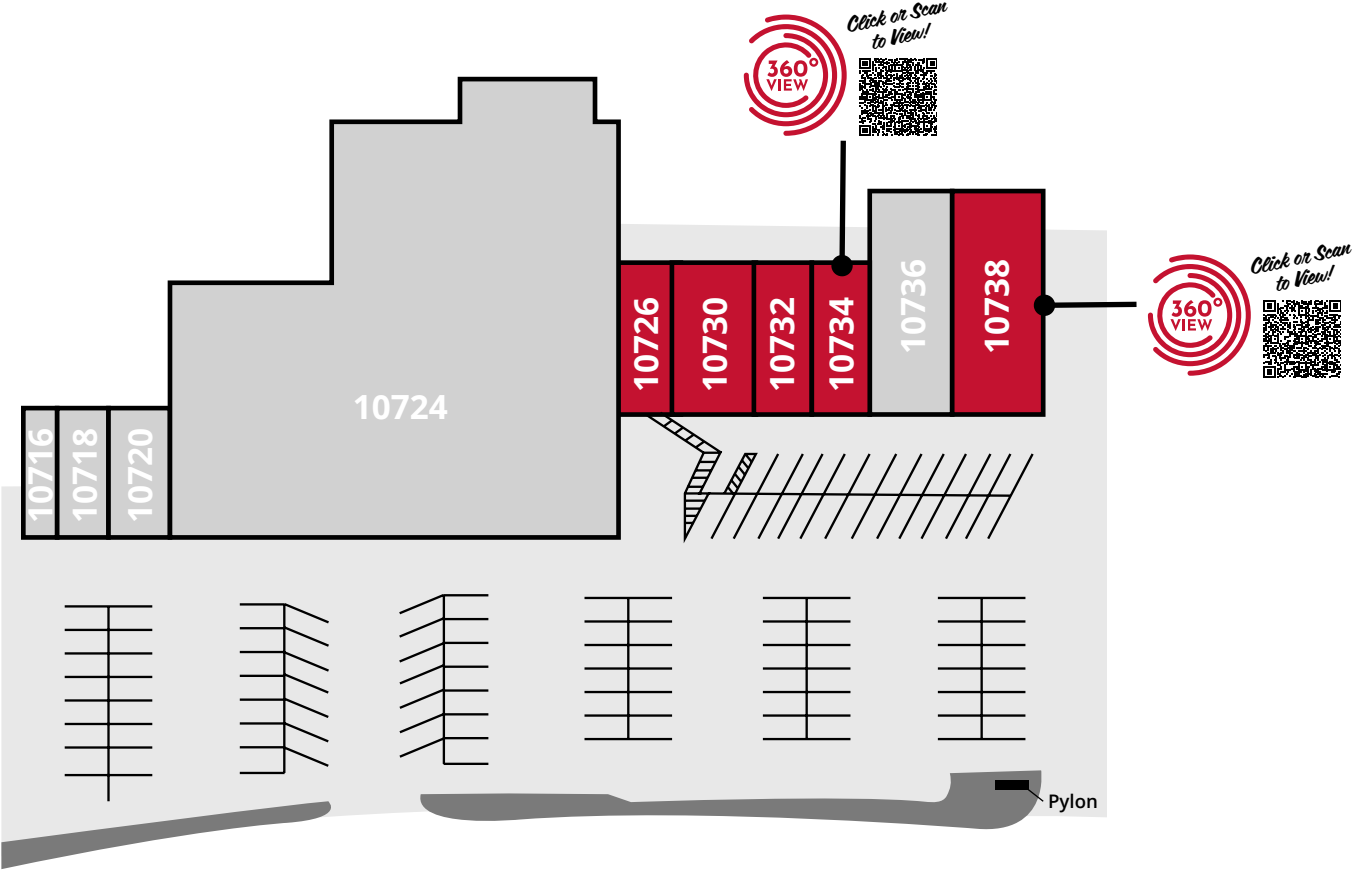


PACEPROPERTIES.COM | 314.968.9898

1401 South Brentwood Boulevard, Suite 900 | St. Louis, Missouri 63144

The information contained herein is not warranted, although it has been obtained from the owner/landlord of the subject property or from other sources that Pace Properties, Inc. deems reliable, and is subject to change without notice. Owner/landlord and Pace Properties, Inc. make no representations as to the environmental condition of the subject property and recommend tenant's independent investigation.

# Site Plan



## BUSINESS 21

Space	Status	SF	Space	Status	SF
10716	Charlie's Barbershop	450	10730	AVAILABLE	2,000
10718	Elysian Capital	1,050	10732	AVAILABLE	1,000
10720	Hillsboro Laundry	1,500	10734	AVAILABLE	1,000
10724	Karch's Market	25,000	10736	Domino's Pizza	2,600
10726	AVAILABLE	1,000	10738	AVAILABLE	3,000

