

MEDICAL SUITES FOR LEASE

ALLENMORE MEDICAL PLAZA I & II

2202 S CEDAR ST
3209 S 23RD ST
TACOMA, WA

KIDDER.COM

OWNED BY


CLISE

LEASED BY

 **Kidder
Mathews**

Medical Suites Available in Allenmore Medical Plaza

Suite 225 | 3,895 RSF available

Suite 340 | 1,901 RSF available

Surface parking at 5/1,000 SF

State of the art medical office building secured with technologically advanced access card system that tracks times and point of entry. Telecommunication and connecting capabilities

Adjacent to Multicare Allenmore Hospital with quick access to I-5 and Hwy 16

Multicare Allenmore Hospital, established in 1929 offers Pierce County Residents convenient access to hundreds of care providers, the latest diagnostic and treatment technologies plus a 24-hour emergency department

DREW FRAME, SIOR

253.948.7032 | drew.frame@kidder.com

WILL FRAME

253.948.6895 | will.frame@kidder.com

RYAN KERSHAW

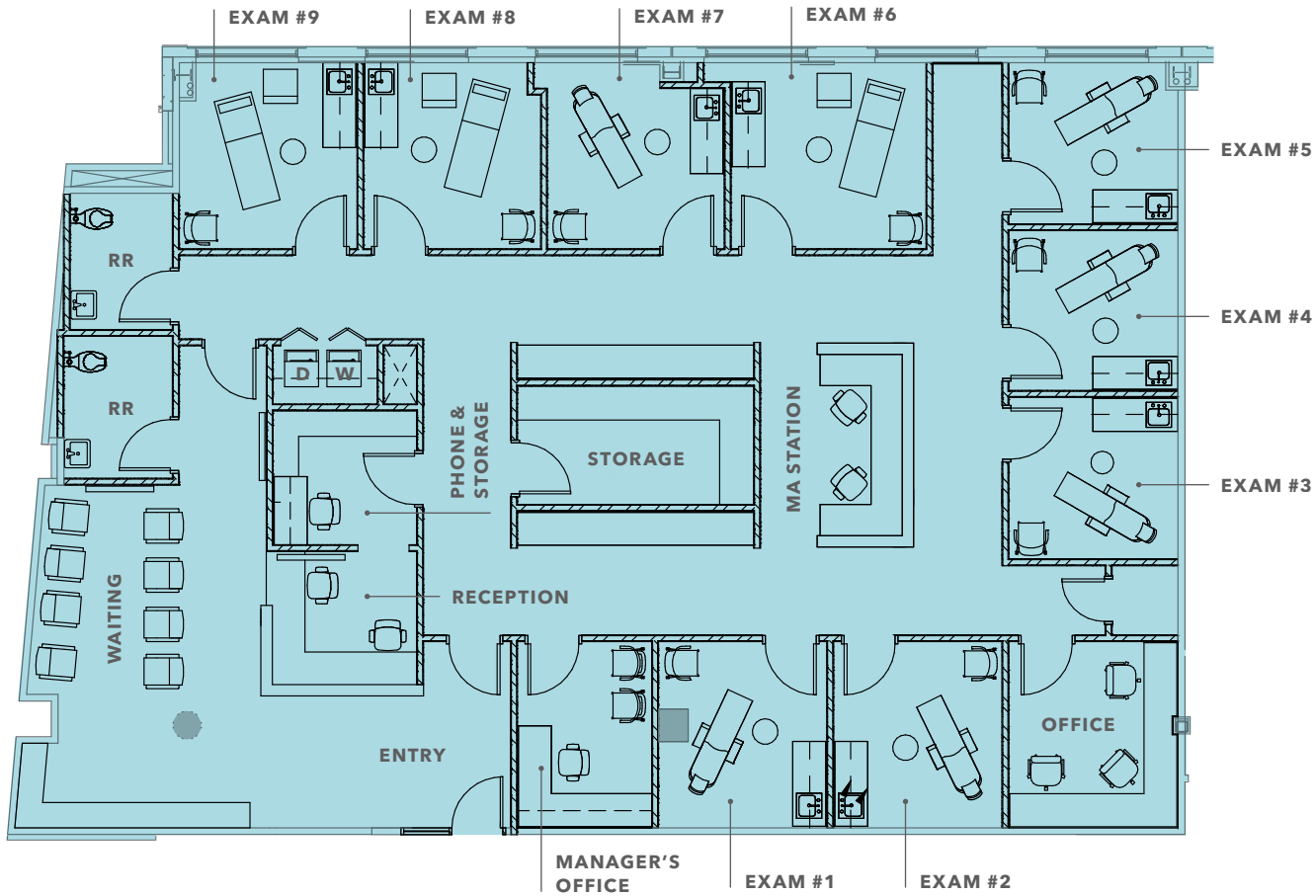
206.949.1334 | ryan.kershaw@kidder.com



KIDDER.COM

This information supplied herein is from sources we deem reliable. It is provided without any representation, warranty, or guarantee, expressed or implied as to its accuracy. Prospective Buyer or Tenant should conduct an independent investigation and verification of all matters deemed to be material, including, but not limited to, statements of income and expenses. Consult your attorney, accountant, or other professional advisor.

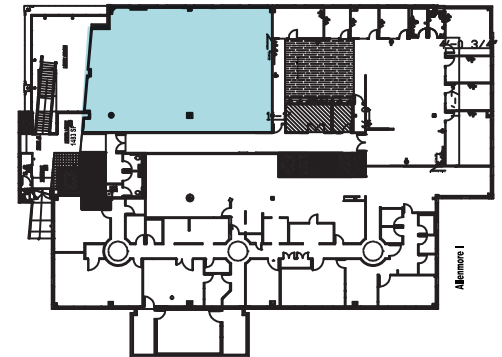
PLAZA I - SUITE 225 (TEST FIT)



SPACE PROGRAM

- 9 exam rooms
- 2 in-suite restrooms
- 2 private offices
- Nurse station
- 3 storage rooms
- Spacious waiting room

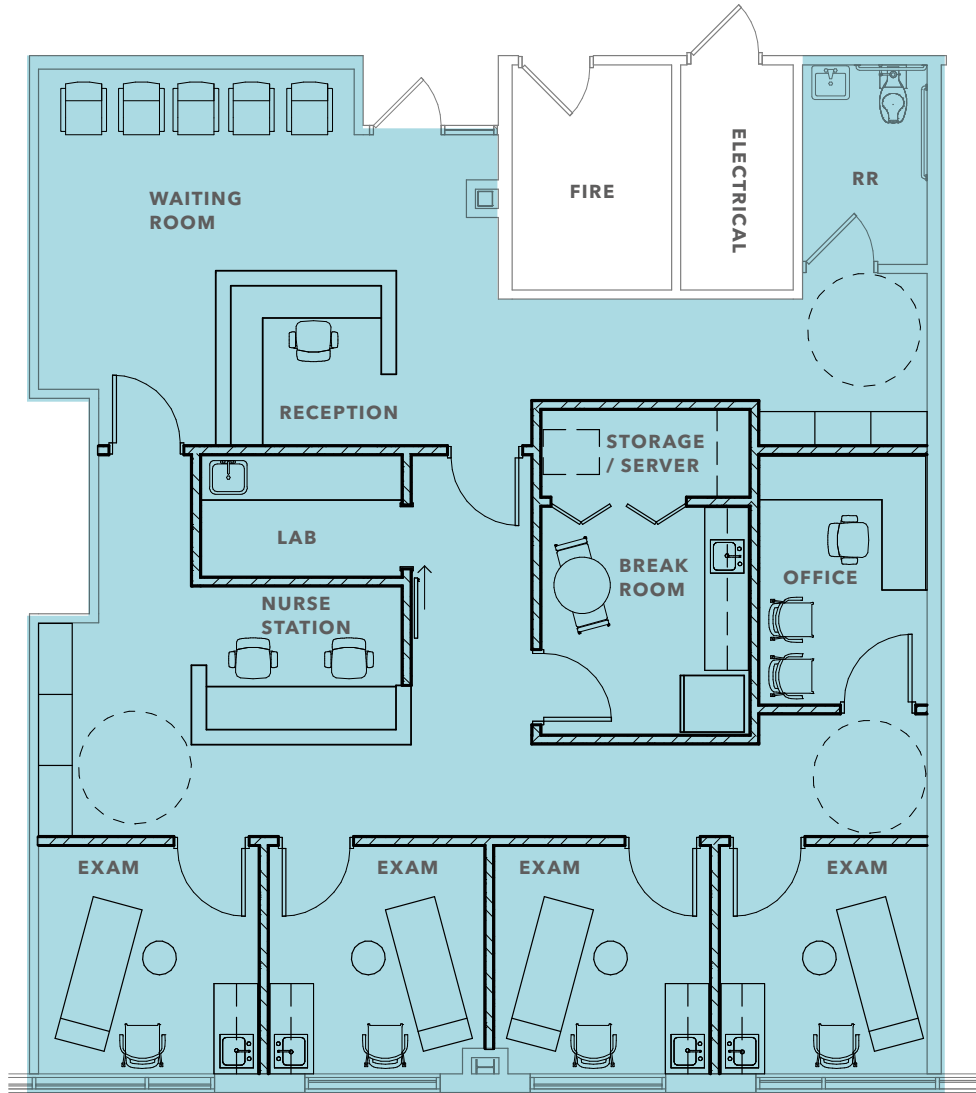
3,895 RSF
SUITE 225



KIDDER.COM

This information supplied herein is from sources we deem reliable. It is provided without any representation, warranty, or guarantee, expressed or implied as to its accuracy. Prospective Buyer or Tenant should conduct an independent investigation and verification of all matters deemed to be material, including, but not limited to, statements of income and expenses. Consult your attorney, accountant, or other professional advisor.

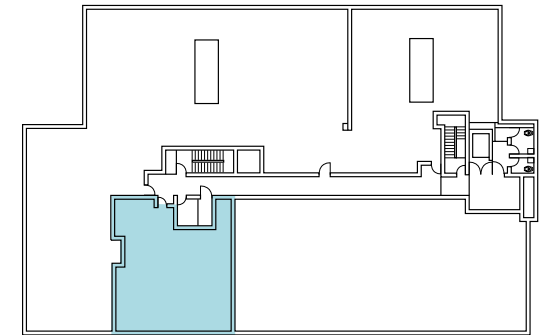
PLAZA I - SUITE 340 (TEST FIT)



SPACE PROGRAM

- 4 exam rooms
- 1 In-suite restroom
- 1 private office
- Nurse station
- Lab room
- Staff breakroom
- Storage/server room
- Spacious waiting room

1,901 RSF
SUITE 340



KIDDER.COM

This information supplied herein is from sources we deem reliable. It is provided without any representation, warranty, or guarantee, expressed or implied as to its accuracy. Prospective Buyer or Tenant should conduct an independent investigation and verification of all matters deemed to be material, including, but not limited to, statements of income and expenses. Consult your attorney, accountant, or other professional advisor.

MEDICAL SUITES FOR LEASE



KIDDER.COM

This information supplied herein is from sources we deem reliable. It is provided without any representation, warranty, or guarantee, expressed or implied as to its accuracy. Prospective Buyer or Tenant should conduct an independent investigation and verification of all matters deemed to be material, including, but not limited to, statements of income and expenses. Consult your attorney, accountant, or other professional advisor.



MEDICAL SUITES FOR LEASE



KIDDER.COM

This information supplied herein is from sources we deem reliable. It is provided without any representation, warranty, or guarantee, expressed or implied as to its accuracy. Prospective Buyer or Tenant should conduct an independent investigation and verification of all matters deemed to be material, including, but not limited to, statements of income and expenses. Consult your attorney, accountant, or other professional advisor.

