



# For lease

Century Park Place  
855 8<sup>th</sup> Avenue SW, Calgary, AB

 **JLL** SEE A BRIGHTER WAY

Century Park Place / 855 8<sup>th</sup> Avenue SW Calgary, AB



## Property Highlights

- Variety of suite build-outs to suit any tenant
- Aggressive market lease rates
- Suites come with an abundance of natural light
- Underground parking
- On-site security
- Amenity rich area
- Walking distance to 7<sup>th</sup> Avenue LRT station

---

**Available Suites** Suite 205: 905 sf  
Suite 300: 7,307 sf  
Suite 700: 7,320 sf  
Suite 1010: 1950 sf

---

**Available** Immediate

---

**Term** Flexible

---

**Asking Rate** Market lease rates

---

**Operating Costs** \$17.06 (2026)

---

**TIA** Negotiable

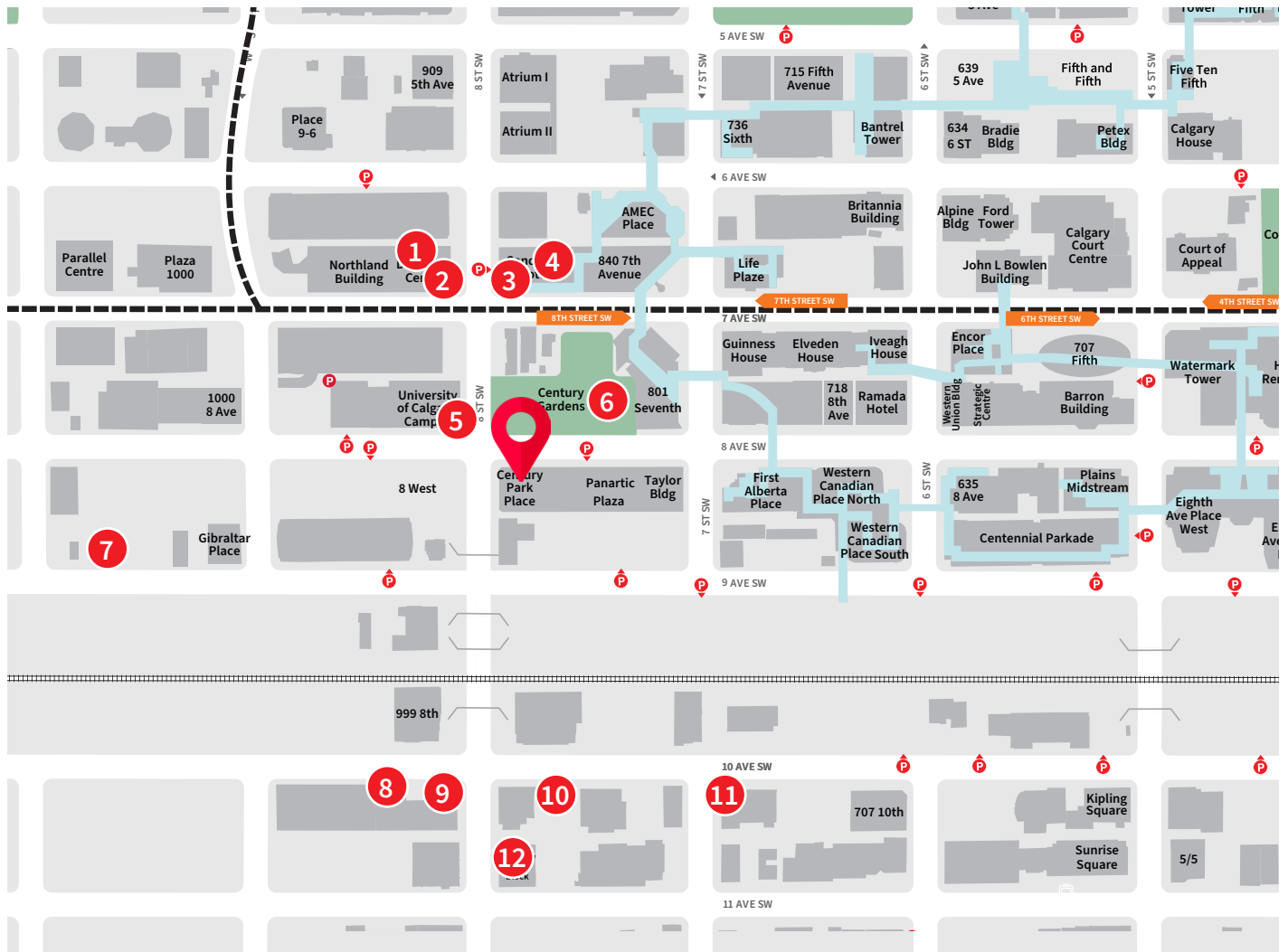
---

**Parking** \$450.00 per stall per month  
1 per 1,800 sf

---

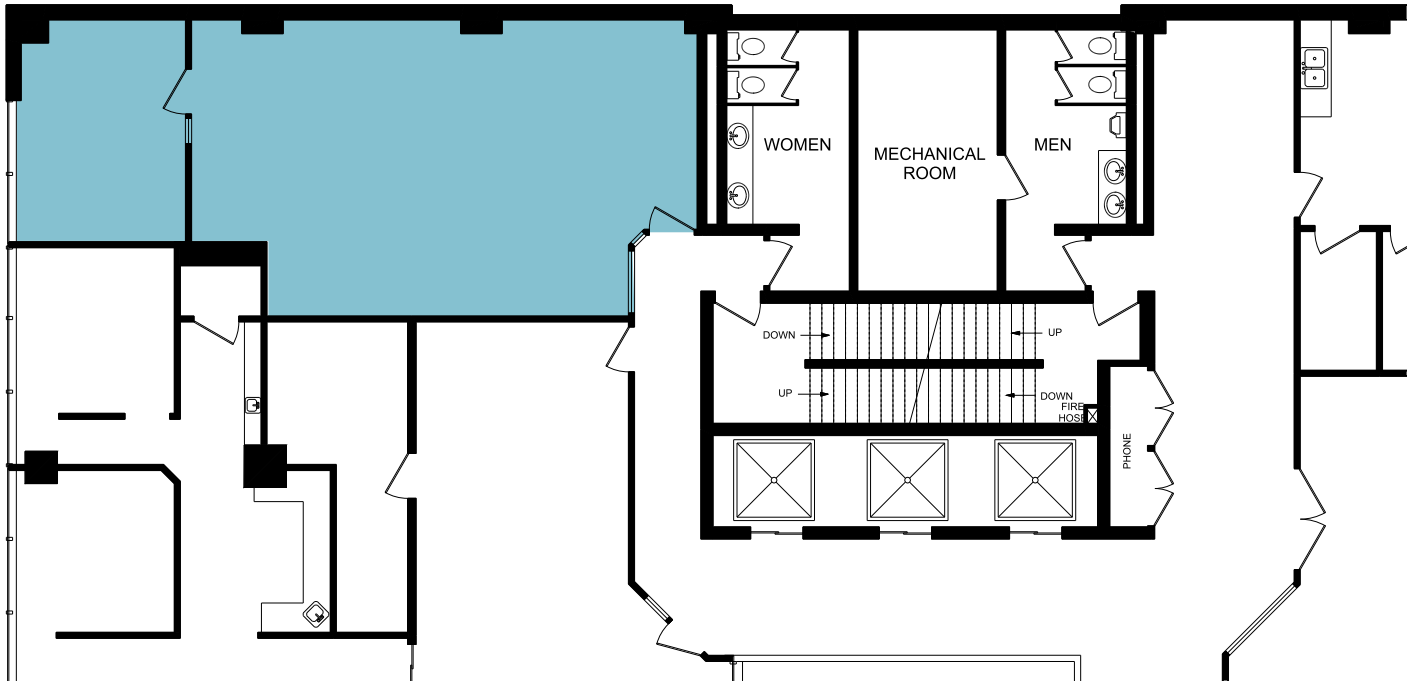


# Location and Amenities

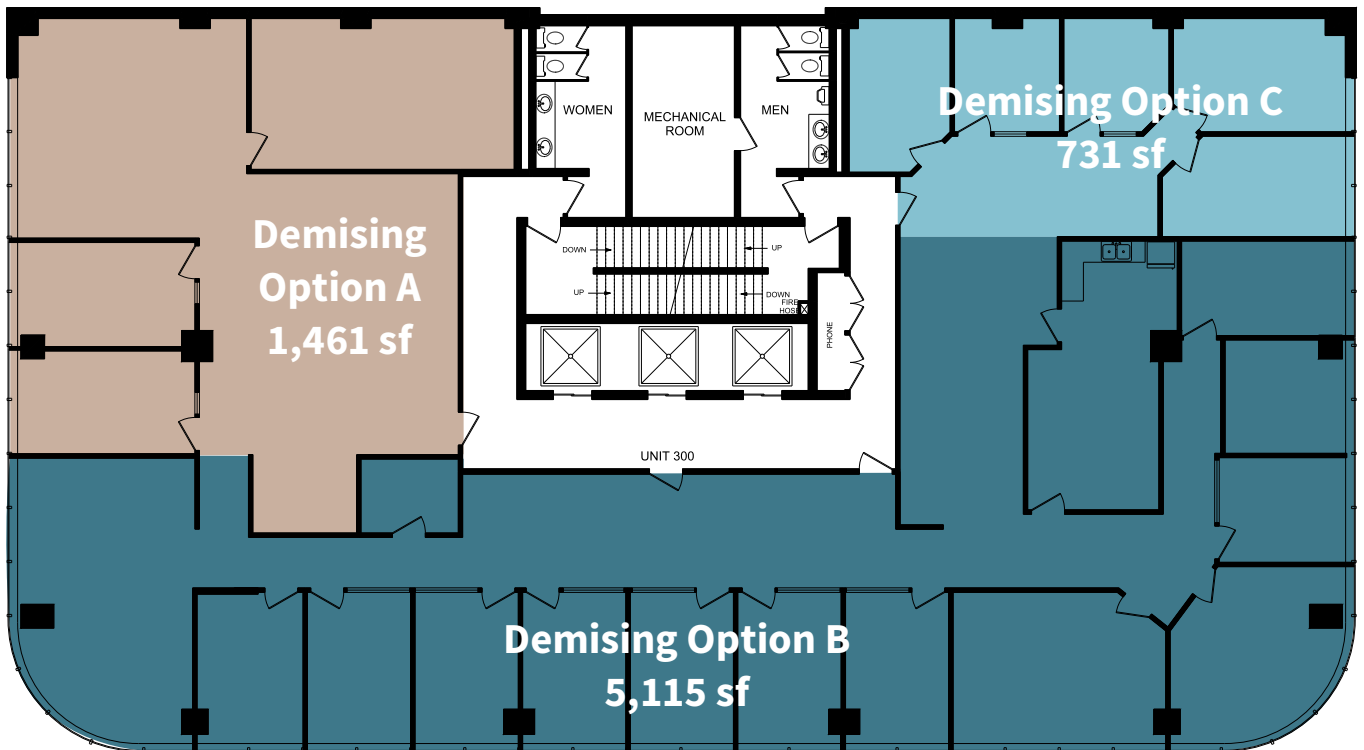


- |   |               |   |                       |    |                          |
|---|---------------|---|-----------------------|----|--------------------------|
| 1 | Tim Hortons   | 5 | Wave's Coffee         | 9  | Sucre Patisserie & Cafe. |
| 2 | Canada Post   | 6 | Century Gardens       | 10 | Holy Grill               |
| 3 | Moxie's       | 7 | Enterprise Rent-A-Car | 11 | Bridgette Bar            |
| 4 | Sandman Hotel | 8 | Wakado Ramen          | 12 | Bonterra Trattoria       |

# Floor 2 | 905 sf

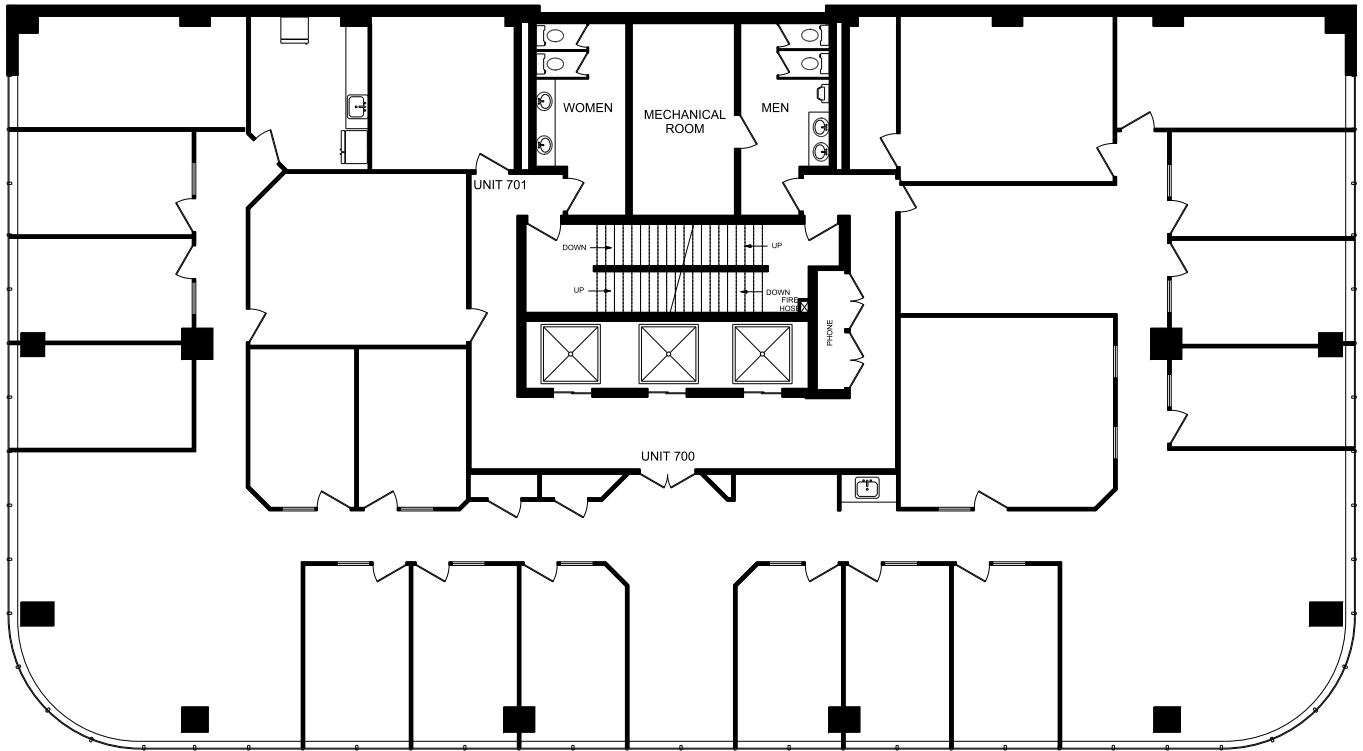


# Floor 3 | 7,307 sf



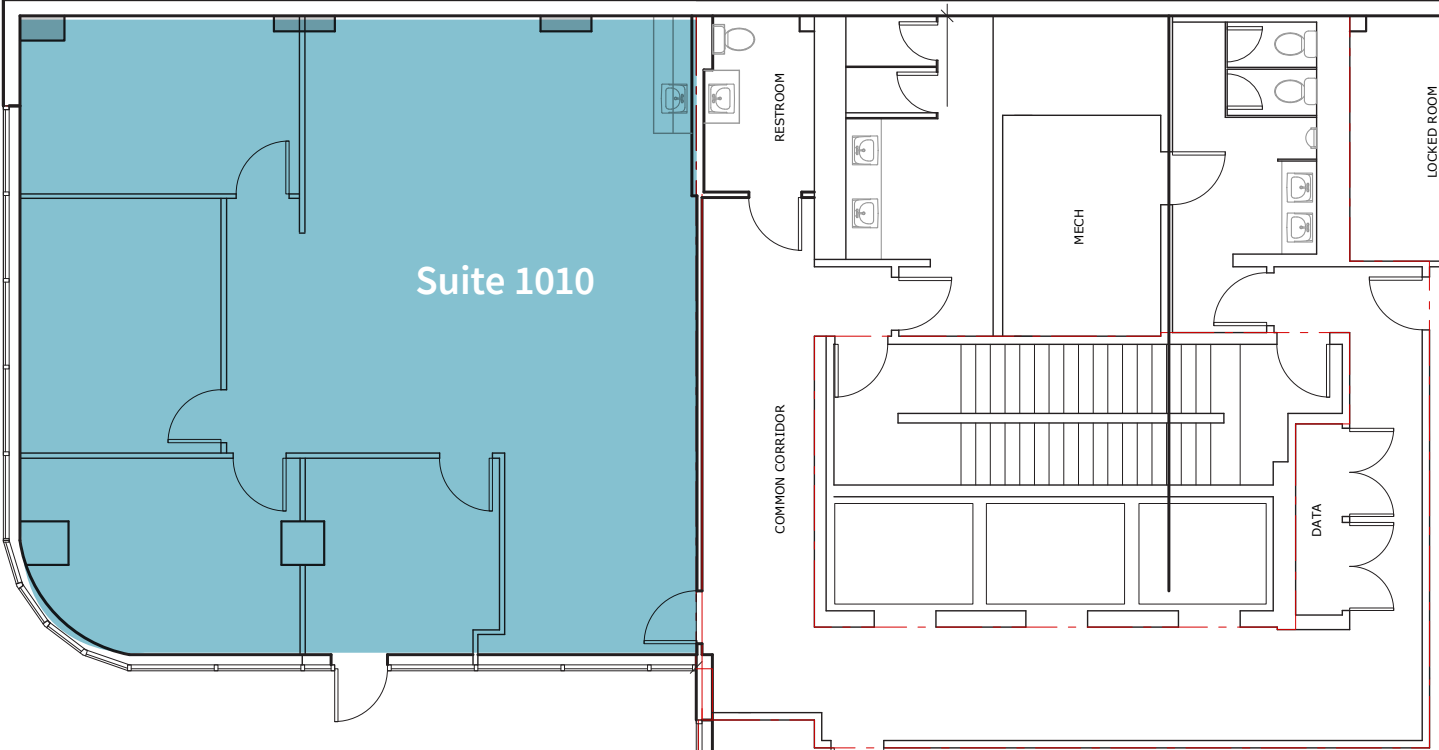
# Floor 7 | 7,320sf

Demising Options Available



# Floor 10 | 1,950 sf

## New Show Suite



**OFFICE**

**Kara Dusseldorp**

*Associate Vice President*

kara.dusseldorp@jll.com

403 456 2348

**James McKenzie**

*Vice President*

james.mckenzie@jll.com

403 456 8100

**JLL Calgary**

Suite 3900, 855 2nd Avenue SW

Calgary, AB

jll.ca