



For Lease 1400 Chatham Ave. | Norwalk, Iowa 50211

Up to 10,265 RSF Commercial Space Available in Hughes Century Crossing

Property details

Availability:	1,625 – 10,265 RSF (can be subdivided)
Lease rate:	\$27.50 - \$29.50
TI Allowance:	\$35.00 PSF
Total building size:	13,290 RSF
Location:	Quick access to I-35 via Hwy 5 extension with easy access to Downtown Des Moines, located in a fast-growing retail corridor within Hughes Century Crossing

Property information:

- Multi-tenant building suitable for retail, restaurants, medical and office tenants
- Located adjacent to multiple single-family and multi-family housing developments, & retail, commercial, and hospitality

About Hughes Century Crossing

Hughes Century Crossing at Norwalk Central is a thriving mixed-use development featuring an expansive 20+ acre sports campus with turf fields and indoor recreation center that draws local, regional, and national events, and is complimented by restaurants, retail, and hotels. Additionally, this ongoing project encompasses Gregg young Sports Campus, City State Bank Norwalk Fieldhouse for public recreation, a future amphitheater, and a 10-foot bike trail connecting Highway 28 to East 18th Street. Being located along Highway 28, Hughes Century Crossing provides excellent access to major travel corridors and Metro communities.

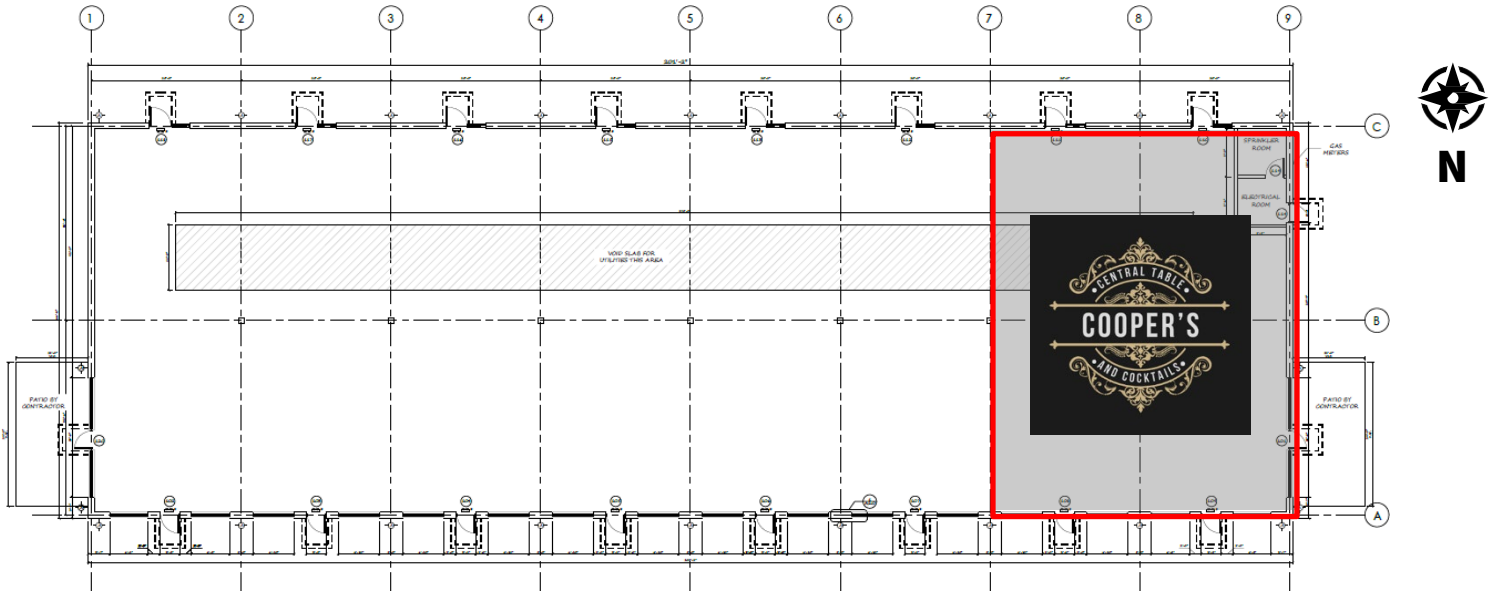
Aaron Hyde
Senior Vice President
JLL Des Moines
+1 515 953 8834
aaron.hyde@jll.com

Nick Anderson
Associate
JLL Des Moines
+1 515 729 6015
nicholas.anderson@jll.com

jll.com/des-moines



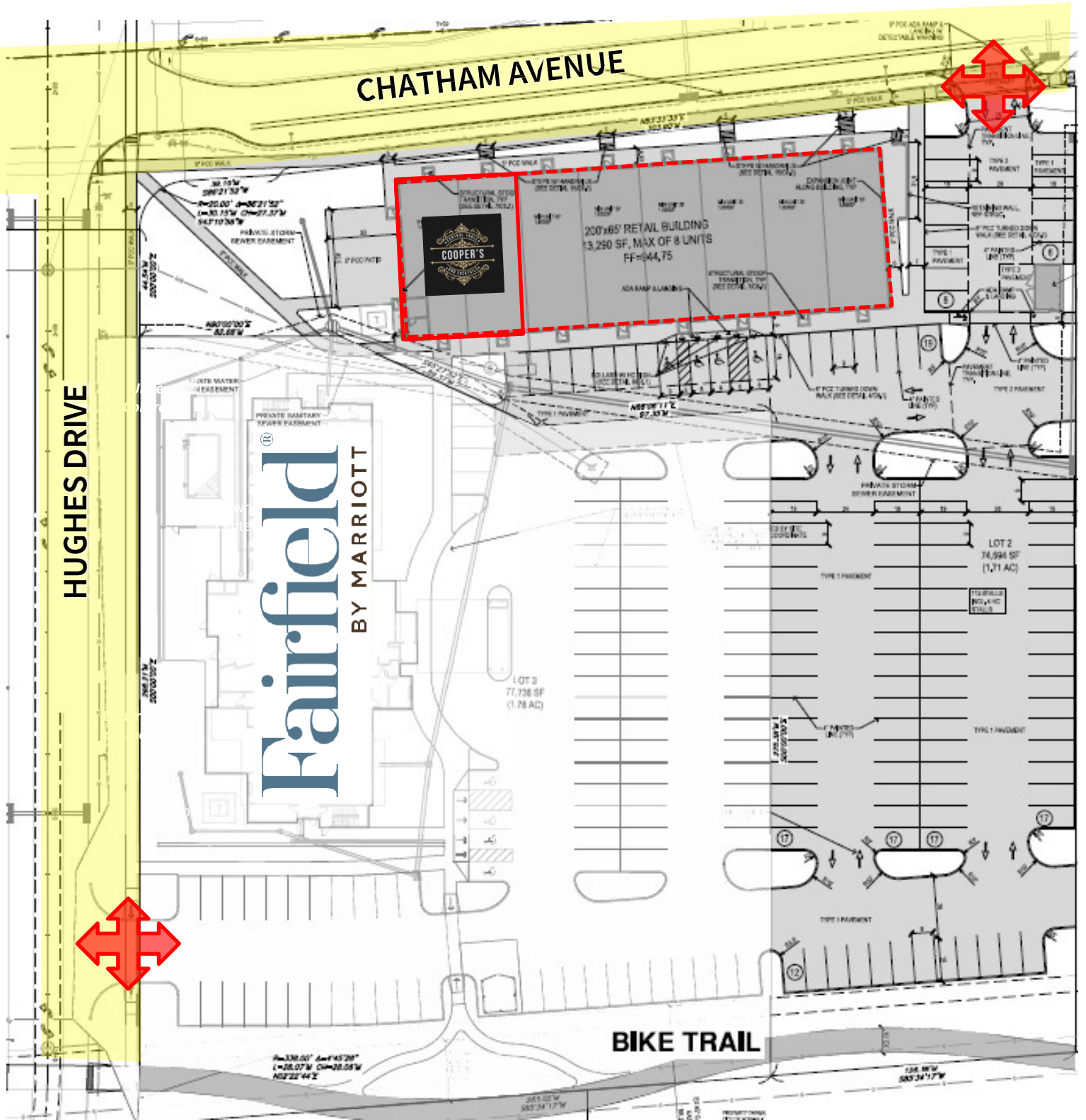
Floor plan



Hughes Century Crossing at Norwalk Central



Site plan



*Conceptual building site plan, rendering subject to change.

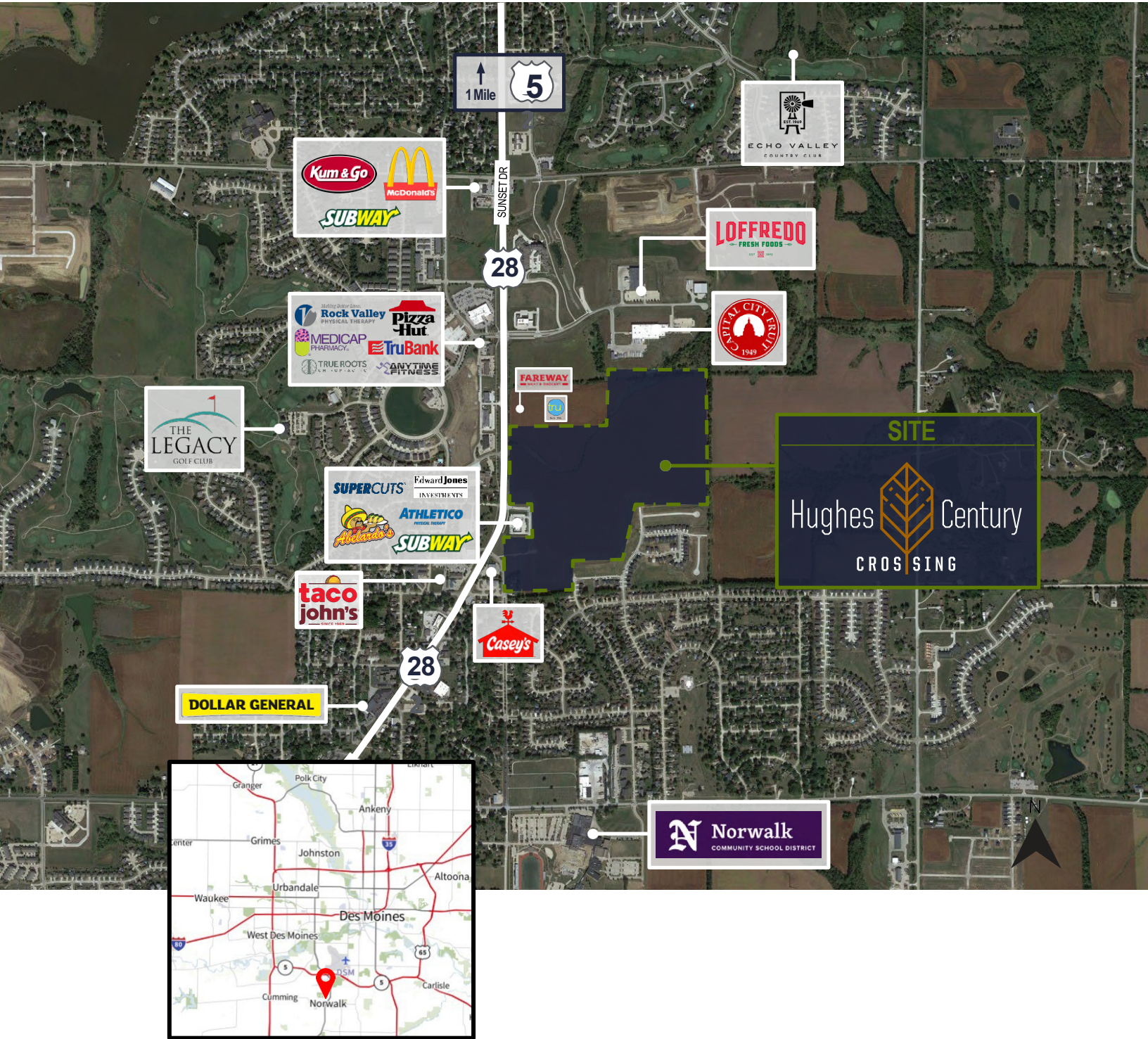
Hughes Century Crossing at Norwalk Central



Demographics Norwalk, IA

	1 Mile	3 Miles	5 Miles
Population	6,913	16,287	45,502
Households	2,681	6,146	18,605
Average HH Income	\$91,478	\$86,383	\$69,446

Norwalk Trade Area



Aaron Hyde
 Senior Vice President
 JLL Des Moines
 +1 515 953 8834
aaron.hyde@jll.com

Nick Anderson
 Associate
 JLL Des Moines
 +1 515 729 6015
nicholas.anderson@jll.com

The information contained herein has been given to us by the owner of the property or other sources we deem reliable. We have no reason to doubt its accuracy, but we do not guarantee it. All information should be verified prior to purchase or lease. Jones Lang LaSalle Brokerage, Inc. is a licensed broker in the State of Iowa.