



Deerfield Business Park - Flex Suites

110 & 112 Exmore Rd | Mooresville, NC 28115



FOR LEASE

1,650 - 18,520 SF Office, Retail, Service, Medical

COMPASS
COMMERCIAL

Deerfield - Flex Suites

Available for Lease

Property Overview

Now Pre-Leasing 8 New Construction Flex Suites on Exmore Road in Deerfield Business Park. The 2 multi-tenant buildings will include units ranging from 1,650 - 2,540 SF with option to combine units. High visibility from Cornelius Road. Deerfield Business Park is one of the area's most upscale professional communities. With its close proximity to I 77, exit 36, future exit 38 and planned Exmore Rd Flyover you'll find that this ultra-convenient location is surely one that business owners will appreciate.

Units available as Vanilla Shell or Cold Dark Shell with HVAC Unit included. Giving the tenant the option to have minimal build-out or a clean slat for up-fit.



Property Details

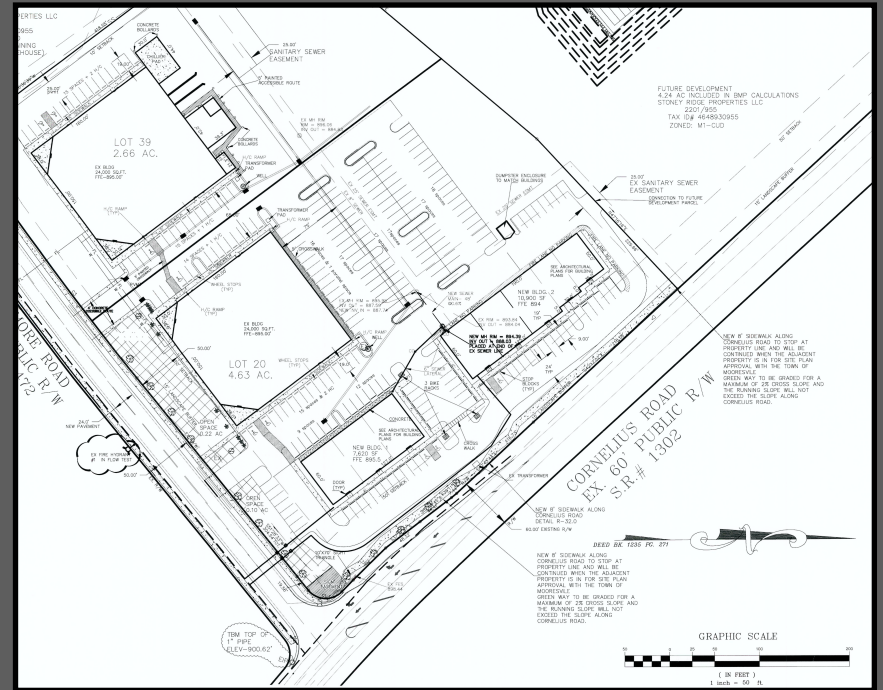
Location	110 & 112 Exmore Rd Mooreville, NC 28115
County	Iredell
Availability	1,650 - 18,520 SF (Up to 8 Units)
Number of Parking Spaces	63
Parking Ratio	3.5
AADT	22,600
Rent Options	\$14.50 - \$23.50 / SF for Vanilla Shell \$11 / SF for Cold Dark Shell (With HVAC Unit)
TICAM	\$3.50 / SF





Available Units

Suite 1A	2,540 SF	Available
Suite 2A	2,540 SF	Available
Suite 3A	2,540 SF	Available
Suite 1B	2,500 SF	Available
Suite 2B	2,500 SF	Available
Suite 3B	2,500 SF	Available
Suite 4B	1,650 SF	Available
Suite 5B	1,750 SF	Available

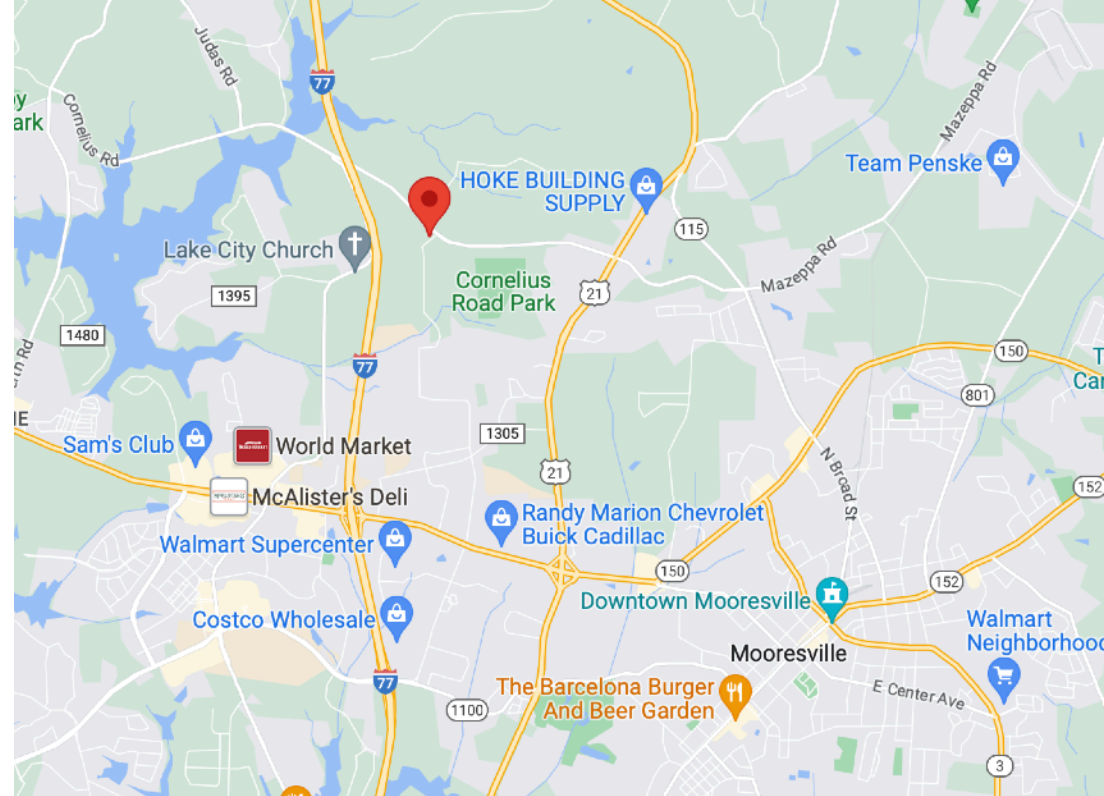


Demographics

RADIUS	1 MILE	3 MILE	5 MILE
Est. 2022 Population	1,814	30,200	74,263
Avg. Household Income	\$89,607	\$99,396	\$102,468
Median Household Income	\$80,392	\$81,910	\$80,716
Households	726	11,546	28,651

Mooreville, North Carolina

The fast growing city close to the notorious Lake Norman is woven with tons of attractions and excitement! With its convenient proximity to both I-77 and I-40, and approximately 30 miles north of Charlotte, Mooreville has been described as the optimum environment for living, working, and playing. Home to many NASCAR race teams and auto museums, this bustling town has earned the nickname 'Race City USA'. For those who don't have a need for speed, the drive-thru Lazy 5 Ranch, the nature trails of Lake Norman State Park, and Trump National Golf Club are a must. Come find out why popular Brawley School Rd neighborhoods like The Point and The Farms are thriving!



For More Information

Boston Reid

704.749.0002

info@bostonreid.co



**BOSTON
REID** and **CO.**
powered by COMPASS

Compass is a licensed real estate broker in the State of North Carolina and [Compass South Carolina, LLC] is a licensed real estate broker in the State of South Carolina and abides by Equal Housing Opportunity laws. All material presented herein is intended for informational purposes only. Information is compiled from sources deemed reliable but is subject to errors, omissions, changes in price, condition, sale, or withdrawal without notice. No statement is made as to the accuracy of any description. All measurements and square footages are approximate. This is not intended to solicit property already listed. Nothing herein shall be construed as legal, accounting or other professional advice outside the realm of real estate brokerage.