

3007 WASHINGTON BLVD. Marina Del Rey, CA 90292

PLUG & PLAY FULLY FURNISHED SUITES AVAILABLE!!



CURRENT AVAILABILITIES

- > Suite 200 +/- 918 SF \$4.25/SF Full-Service Gross
- > Suite 225 +/- 934 SF \$3.50/SF Full-Service Gross



CREATIVE SPACE



WALKER'S PARADISE



OPERABLE WINDOWS



OUTDOOR DECKS



FIBER INTERNET



PARKING





Premises
+/- 918 SF

Rental Rate
\$4.25/SF FSG
Includes utilities

Occupancy
Immediate

Term
Negotiable

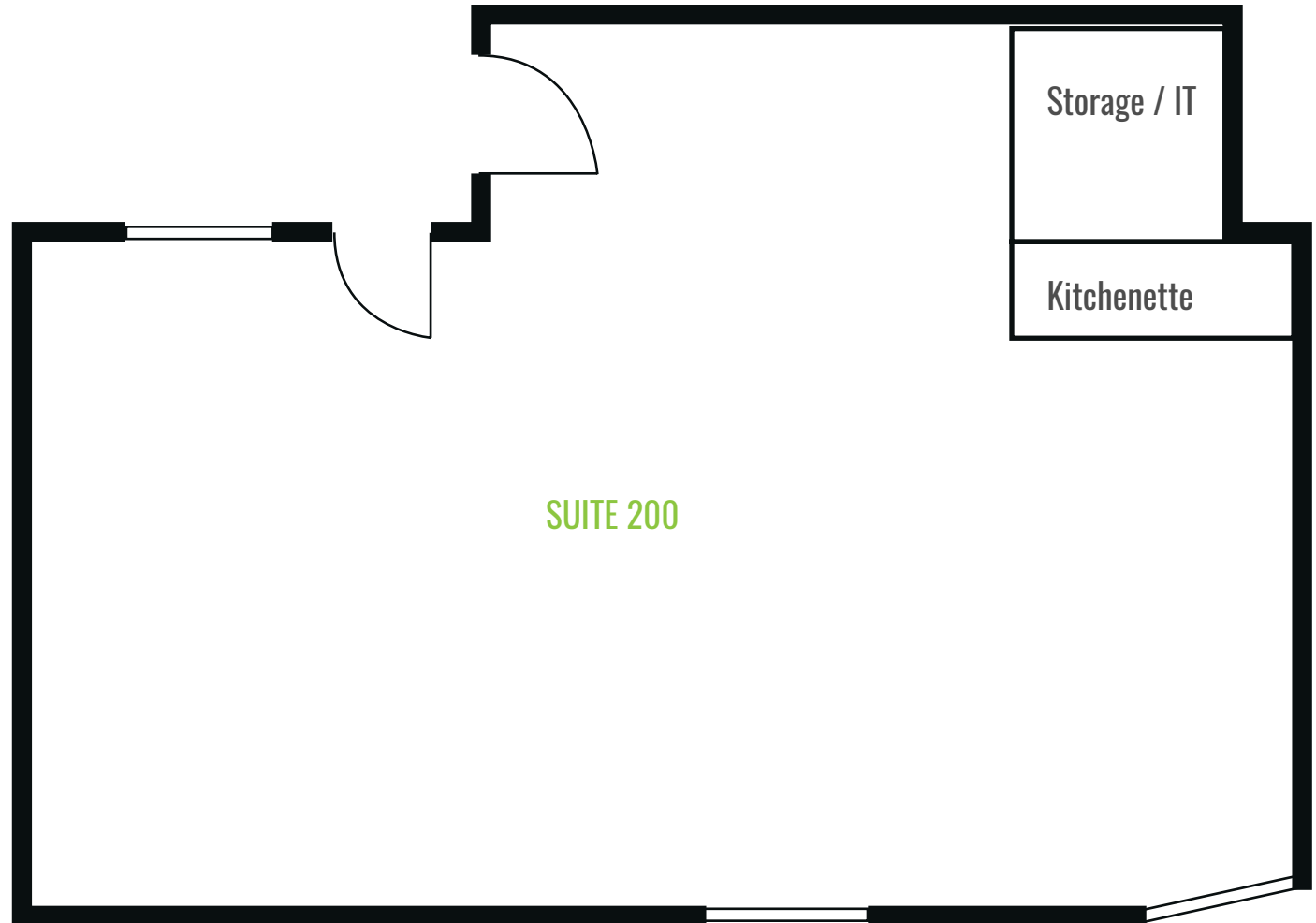
Parking
2/1000 SF @ \$150 /space/month

LAYOUT

- Open plan
- Conference room
- Kitchenette
- Storage room

FEATURES

- Abundant natural light
- High exposed ceiling
- Floor to ceiling glass windows





Premises
+/- 2091 SF

Rental Rate
\$3.50/SF FSG
Includes utilities

Occupancy
August 1st, 2026

Term
Negotiable

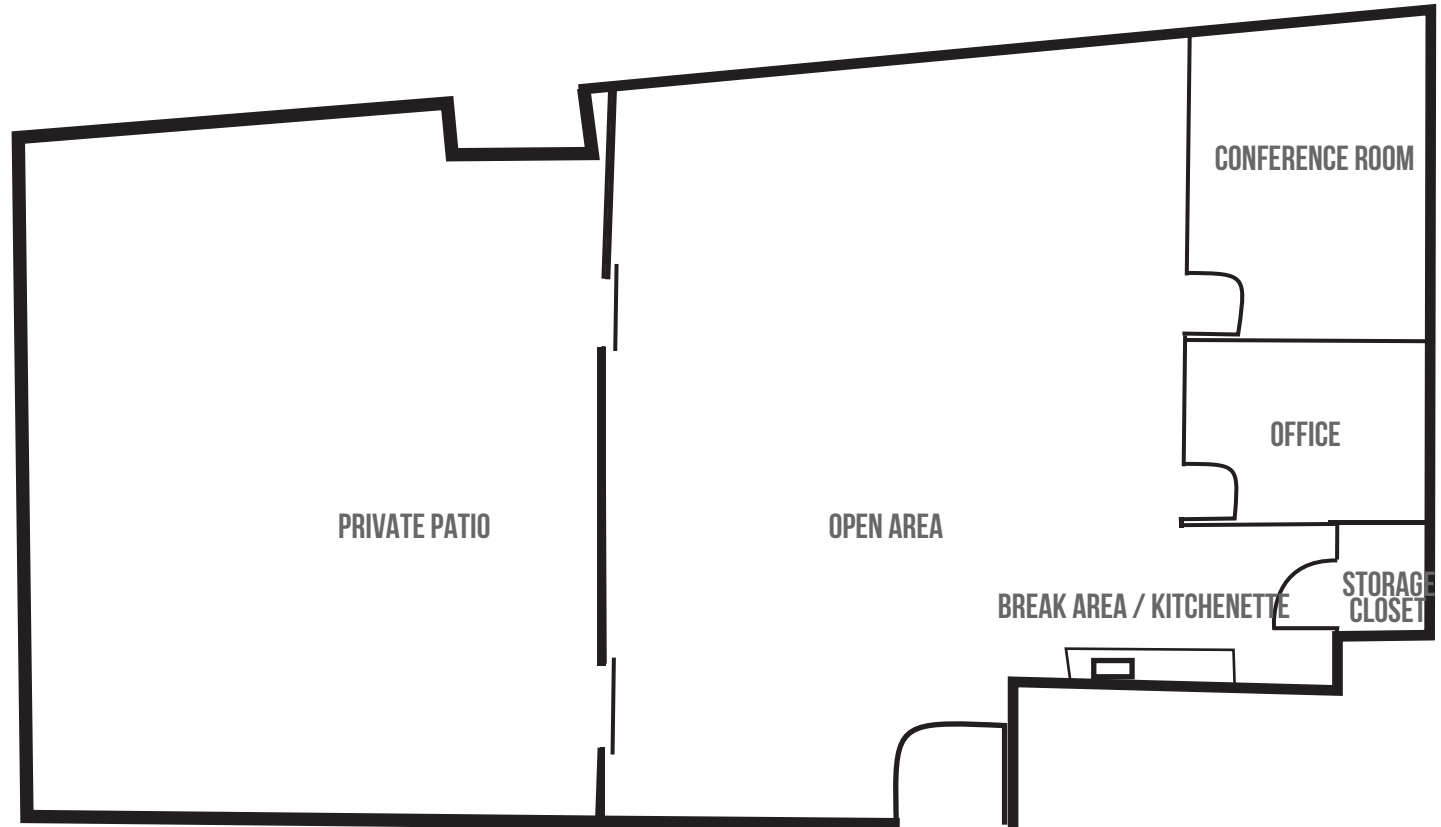
Parking
2/1000 SF @ \$150 /space/month

LAYOUT

- Open area
- Conference room
- Office
- Storage closet
- Kitchenette

FEATURES

- Creative space
- High exposed ceilings
- Corner suite
- Natural light
- Large private patio
- Floor to ceiling windows
- Partially furnished



PLUG & PLAY FULLY FURNISHED SUITES AVAILABLE!!!







RSFLA

Commercial Real Estate
Leasing & Investment Sales

3007

For leasing inquiries contact:

Kevin Simpson
kevin@rsfla.com
(310) 526-0911
DRE 01891087

Michael Preiss
michael@rsfla.com
(310) 526-0910
DRE01095117

RSFLA. BY YOUR SIDE. ON YOUR SIDE

606 Venice Boulevard, Venice, CA 90291
Tel 310.526.0909 www.rsfla.com

THIS IS A MARKETING COMMUNICATION

© 2023 RSFLA, Inc. All rights reserved. This information has been obtained from sources believed reliable but has not been verified for accuracy or completeness. RSFLA, Inc. makes no guarantee, representation or warranty and accepts no responsibility or liability as to the accuracy, completeness, or reliability of the information contained herein. You should conduct a careful, independent investigation of the property and verify all information. Any reliance on this information is solely at your own risk.