

51ST/I-44 GARDEN OFFICE/MEDICAL SPACES FOR LEASE



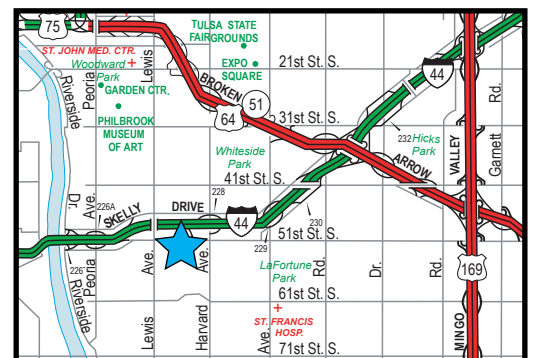
2840 EAST 51ST STREET, TULSA, OK BRITTANY SQUARE

SIZES

- 670-3,113 SF Office/Medical spaces available
(See floor plans on back)

FEATURES

- Professional office/medical spaces
- Fully remodeled lobby and exterior
- Abundant surface parking
- Building security/card key access
- Prime ground floor space with outside entry and signage
- Office Light (OL) Zoning
- Convenient and central Tulsa location off I-44
- Building name visible to I-44



The information contained herein is believed to be accurate but is not guaranteed as to accuracy and may change or be updated without notice.

Contact: Monty Berry, CCIM, SIOR

Office (918) 280-9900 | Cell (918) 695-4162 | Fax (918) 280-9902

E-mail Monty@EquitasRealty.com

Aerial



Photos



Exterior Corridor

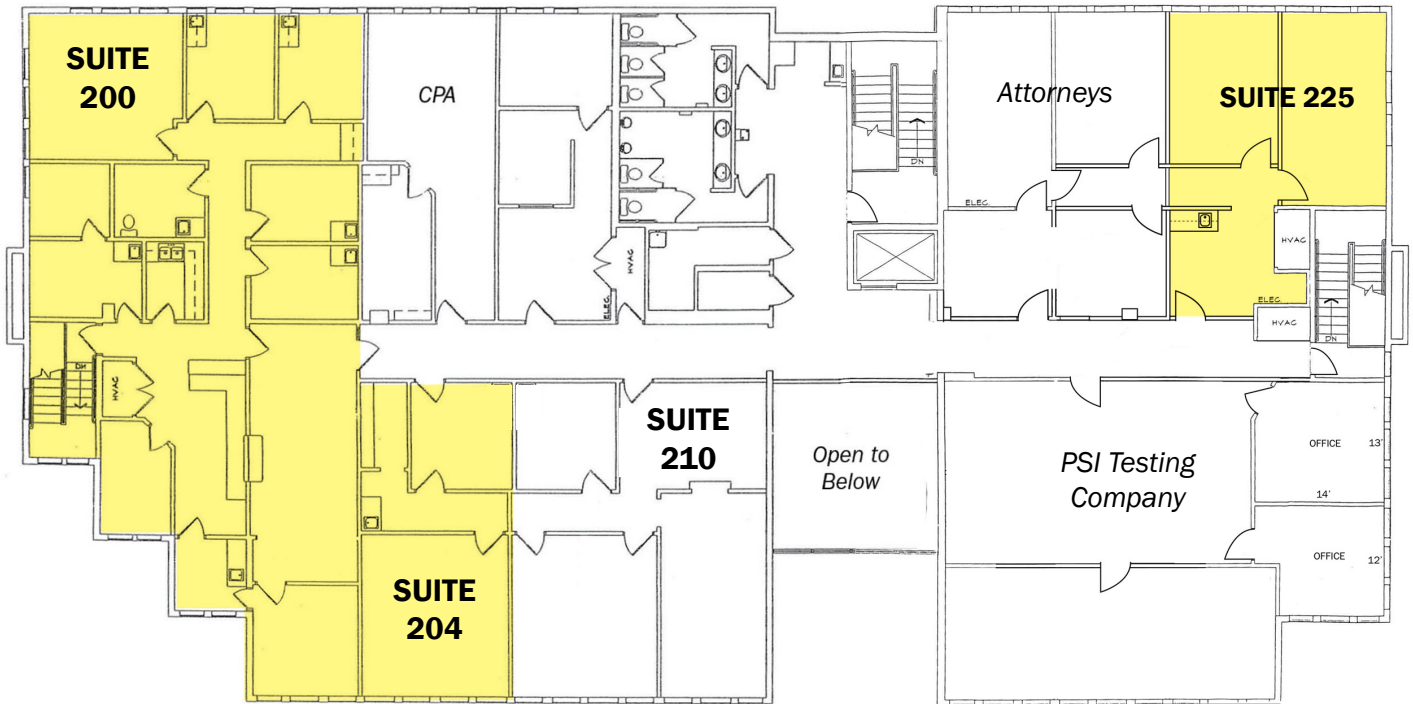


Side of Building Exterior



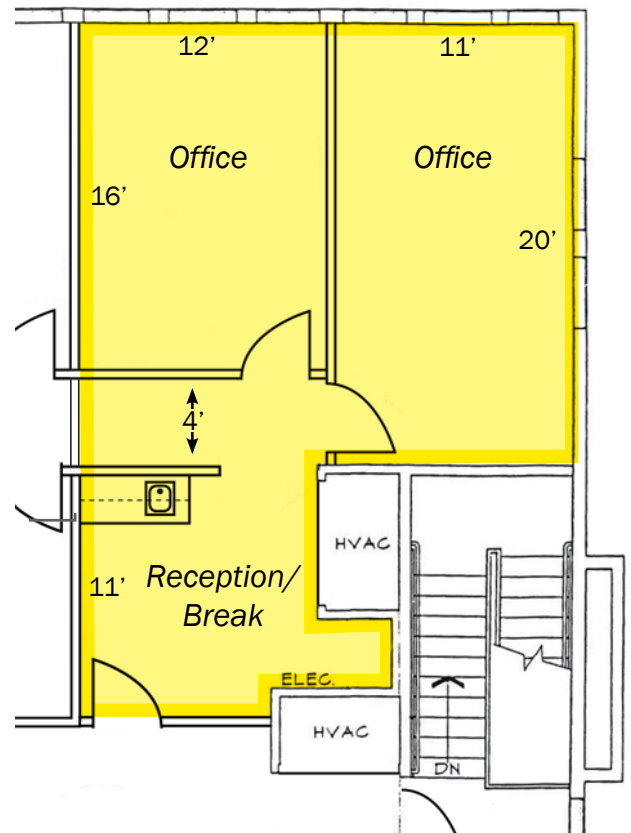
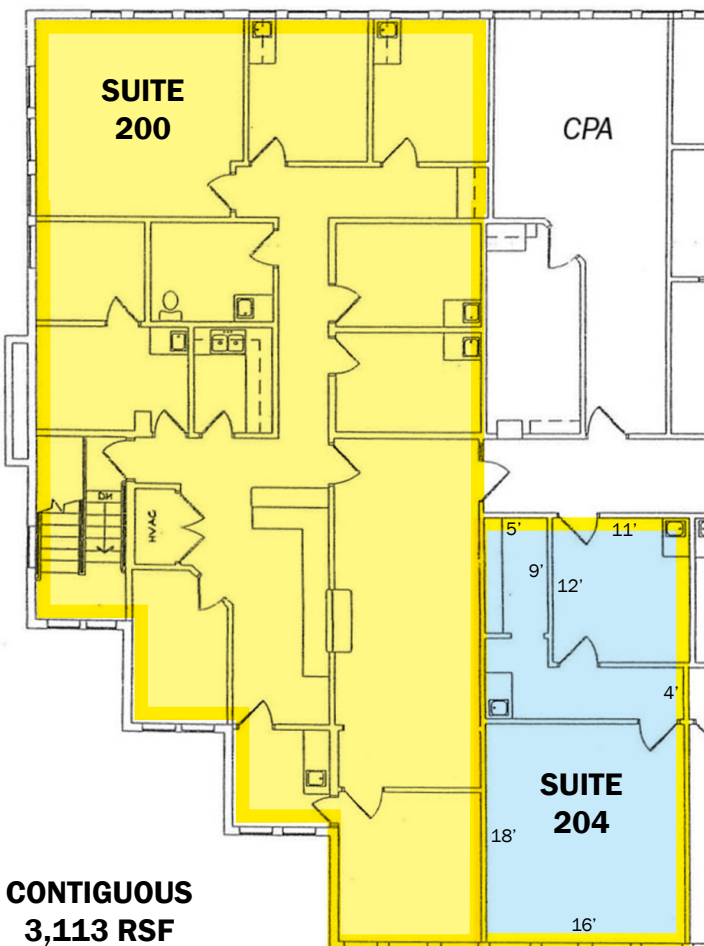
Front Entry Sign Directory

SECOND FLOOR



SUITE 200
2,443 RSF

SUITE 225
797 RSF



CONTIGUOUS
3,113 RSF

SUITE 204
670 RSF