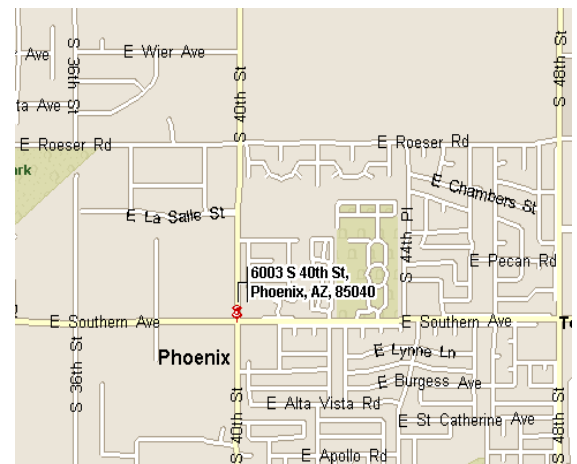


AVAILABLE

6003 S. 40th Street, #1
3,060 Square Feet

Features:

- Three (3) buildings totaling over 57,000 s.f.
Building A (6007 S. 40th St.): 21,725 s.f.
Building B (6005 S. 40th St.): 13,793 s.f.
Building C (6003 S. 40th St.): 21,780 s.f.
- Common Truckwells throughout the project
- 1,000 square feet of office (Reception, 3 offices, bullpen and 2 restrooms)
- 18' Minimum clear height
- Skylights in the warehouse
- 200 amps 3 phase 120/208V power
- 40th Street and E. Southern Ave. Frontage
- Building Signage for each Suite
- **Competitive Gross Rental Rates**



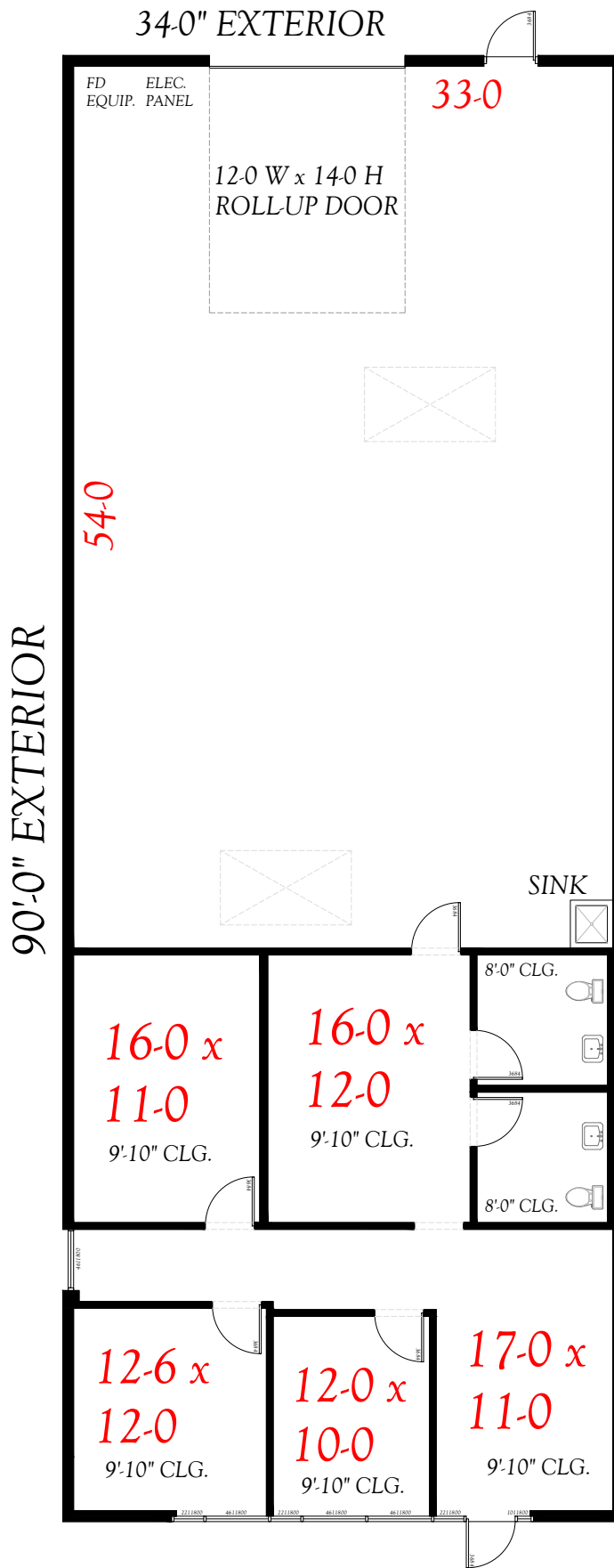
5100 N. 40th Street
Phoenix, Arizona 85018
(602) 438-8000
(602) 438-7940 fax
www.azindprop.com

For More Information Contact:

Randy S. Warner
(602) 438-8000
randy@azindprop.com

No CAM's

The information contained herein has been obtained from sources we deem reliable. However, no warranties or representations, expressed or implied, are made as to the accuracy of any information contained herein, and the information is subject to errors and omissions. This information is also subject to change of price, rental or other conditions, withdrawal without notice, and to any special listing conditions imposed by our principals.



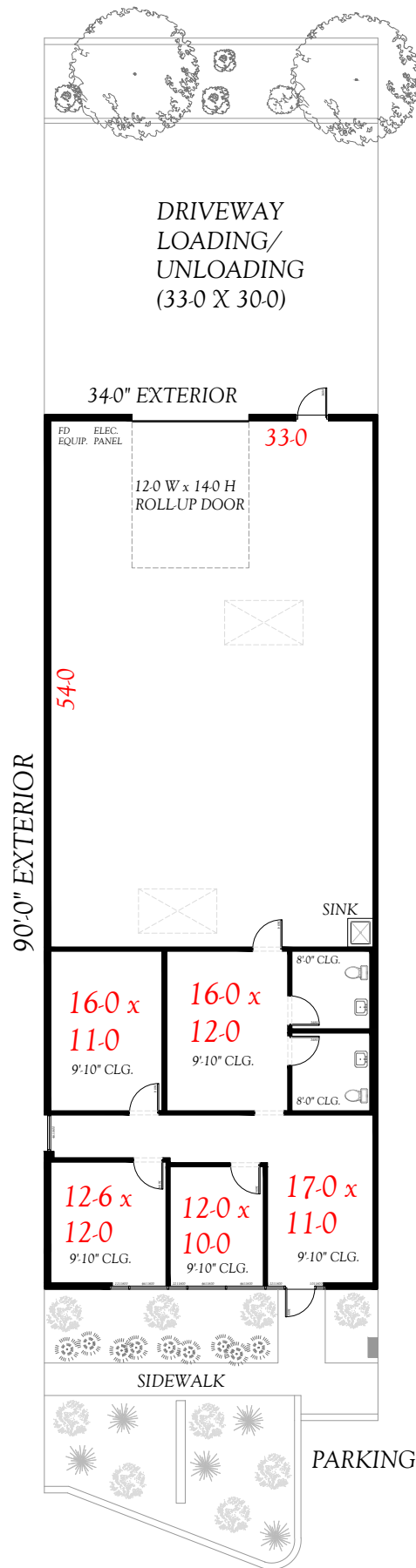
TOTAL SF: 3,060

6003 S. 40th ST., SUITE #1
Phoenix, Arizona 85042



Randy S. Warner
randy@azindprop.com

602.438.8000 (office)
602.438.7832 (direct)
602.438.7040 (fax)
602.882.6666 (cell)



TOTAL SF: 3,060

6003 S. 40th ST., SUITE #1
Phoenix, Arizona 85042



**Arizona
Industrial
Properties**

Randy S. Warner
randy@azindprop.com

602.438.8000 (office)
602.438.7832 (direct)
602.438.7040 (fax)
602.882.6666 (cell)