

3579 E. Overland Road, Meridian, ID

Silverstone Point Building, in Silverstone Park



SPACE DETAILS

SPACE: 4,977 SF (divisible)

AVAILABLE: Vacant

NOTES: Private entry on South side. Recently completed build out with open layout. All new finishes, contact us to create a custom layout that meets your needs.

PROPERTY FEATURES

BLDG TYPE: Medical/Office

BLDG SIZE: 22,054 Square Feet

FLOORS: Single Story

PARKING: 5/1,000 SF Leased

LEASE TYPE: Full Service, Less Tenant Janitorial

ZONING: City of Meridian, CC

OWNER: Sundance Investments, L.L.L.P.

HIGHLIGHTS

- Centrally located in the Boise Valley, I-84 (Exit 46) less than one mile
- Overland Road address and access
- Professional Silverstone Park, provides service and food amenities in close proximity
- Private entry into tenant space
- Excellent building signage available
- Generous parking included
- Eleven (11) traffic outlets in park, two (2) traffic controlled intersections
- Proportionate use of Silverstone Amenity Center five (5) meeting and board rooms included

Call: 208-322-7300

WWW.SUNDANCECO.COM



3579 E. Overland Road, Meridian, ID

Silverstone Point Building, in Silverstone Park



Call: 208-322-7300

WWW.SUNDANCECO.COM



3579 E. Overland Road, Meridian, ID

Silverstone Point Building, in Silverstone Park



Call: 208-322-7300

WWW.SUNDANCECO.COM

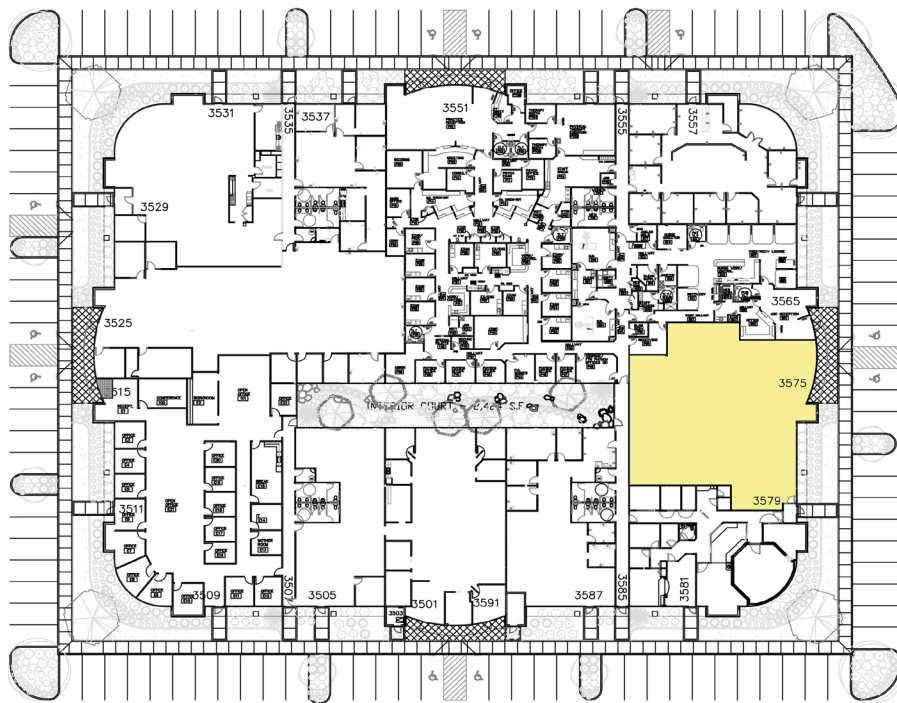
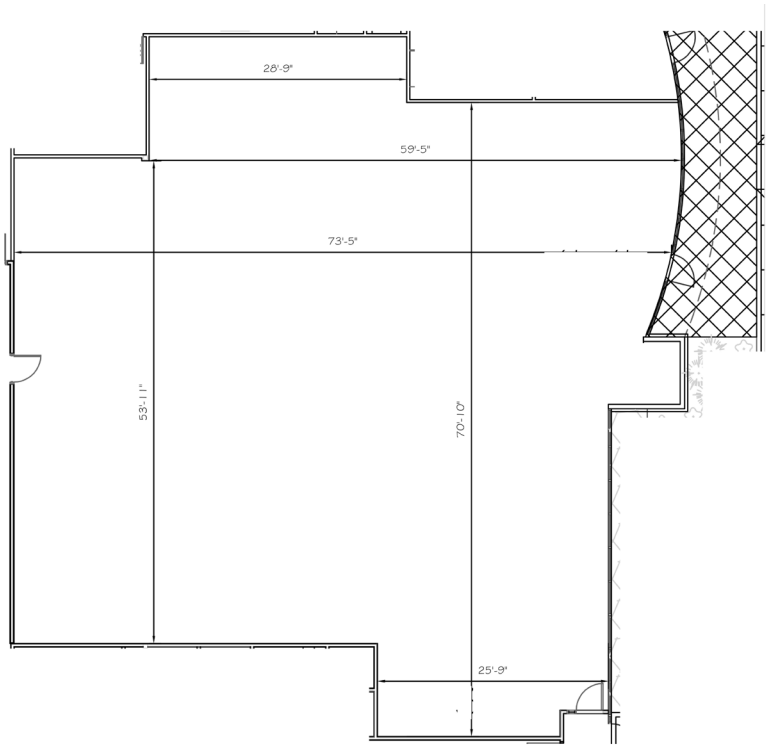


3579 E. Overland Road, Meridian, ID

Silverstone Point Building, in Silverstone Park

Floor Plan 4,977 SF

As Build Plan



Call: 208-322-7300

WWW.SUNDANCECO.COM

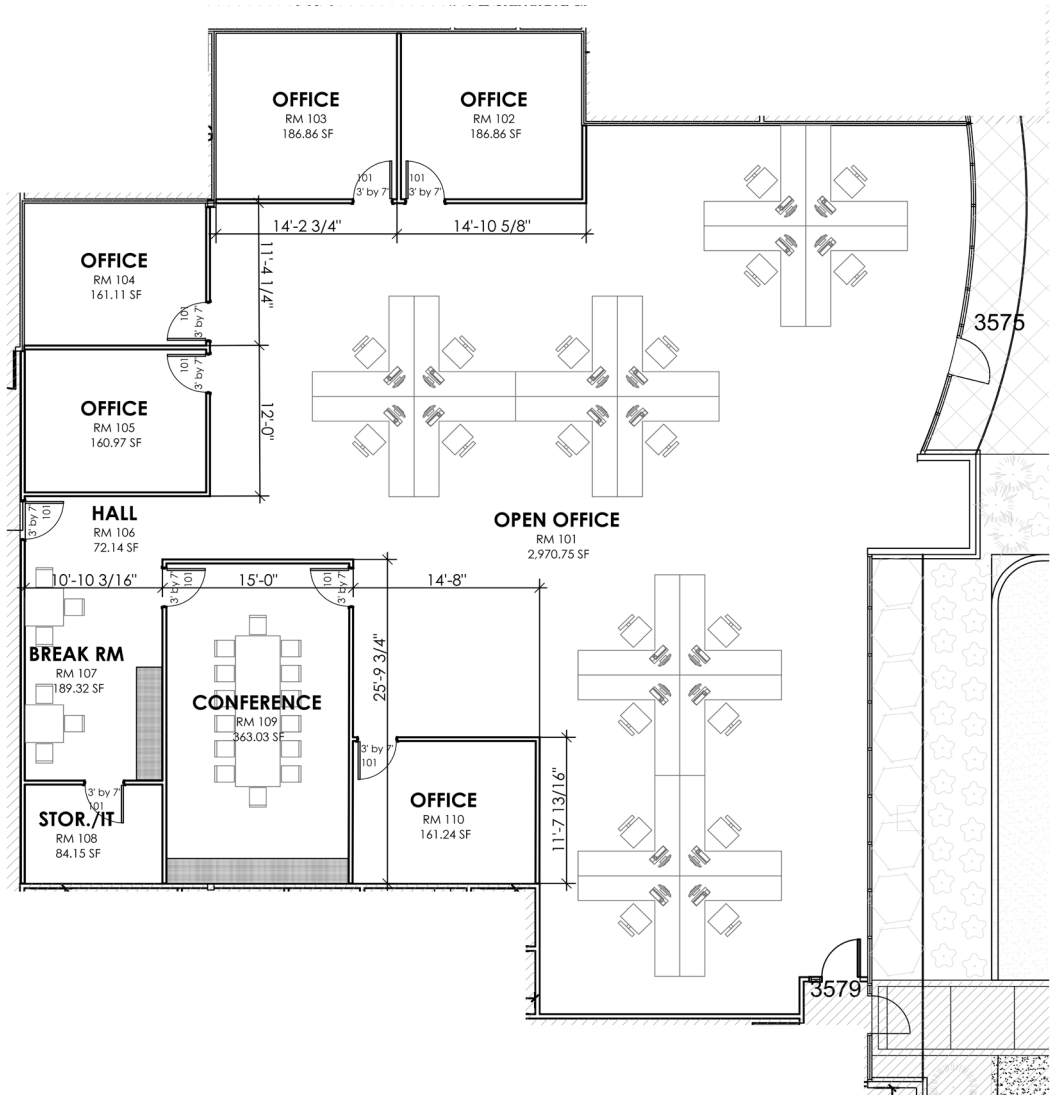


3579 E. Overland Road, Meridian, ID

Silverstone Point Building, in Silverstone Park

Conceptual Plan

Landlord will provide additional improvements, contact to discuss in greater detail.



Call: 208-322-7300

WWW.SUNDANCECO.COM

