



FOR LEASE

## Downtown Office for Lease

15-23 N 4<sup>TH</sup> STREET  
COLUMBUS, OHIO

### Building Size

14,249 SF

### Area Available

Suite 15: 3,338 SF

Suite 23: 3,624 SF

(Suites can be combined)

### Rental Rate

Suite 15: \$14.00/SF Gross

Suite 23: \$17.00/SF Gross

### Property Highlights

- Visibility and Signage Opportunity on 4th Street
- Creative space with exposed brick, hard wood flooring, etc.
- Ground floor space with an exterior entrance
- Within walking distance of the Columbus Club, The Athletic Club of Columbus, Statehouse, coffee shops, dining, hotels and much more
- Easy access to I-670, I-71 and I-70

*For information, please contact:*

**Cory Kooperman, CCIM**

Managing Director

t 614-883-1035

cory.kooperman@nmrk.com

150 E Broad Street, Suite 500  
Columbus, Ohio 43215

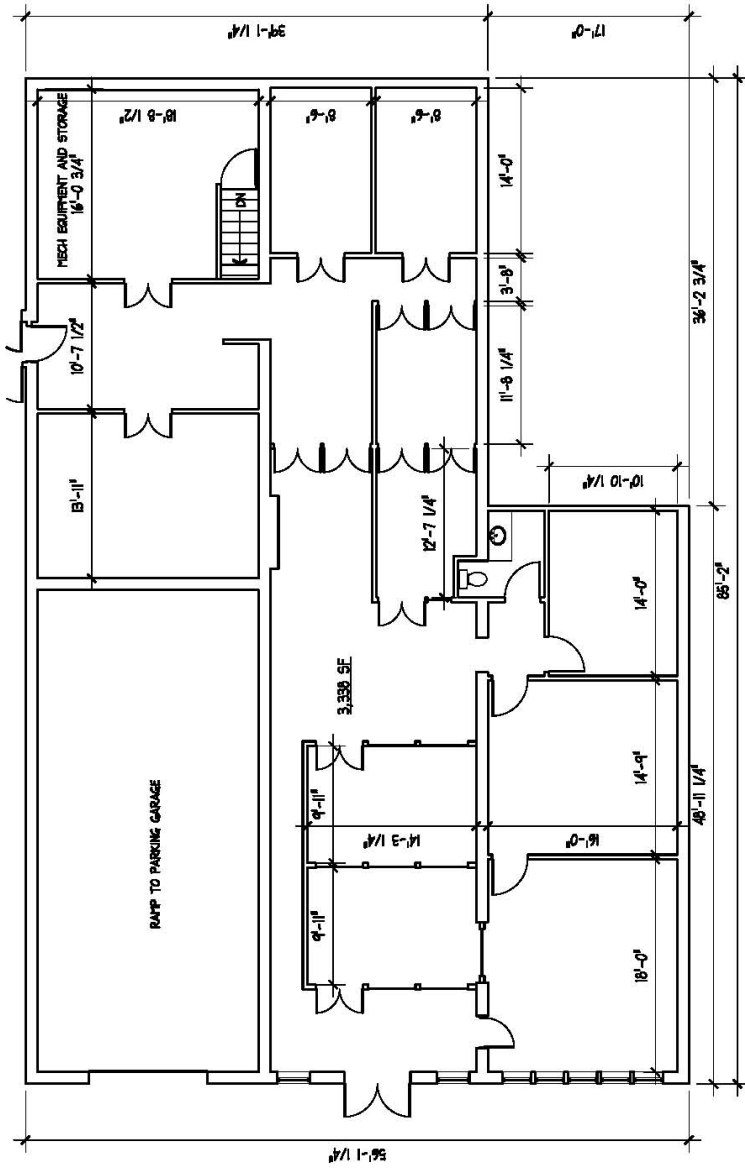


[nmrk.com](http://nmrk.com)

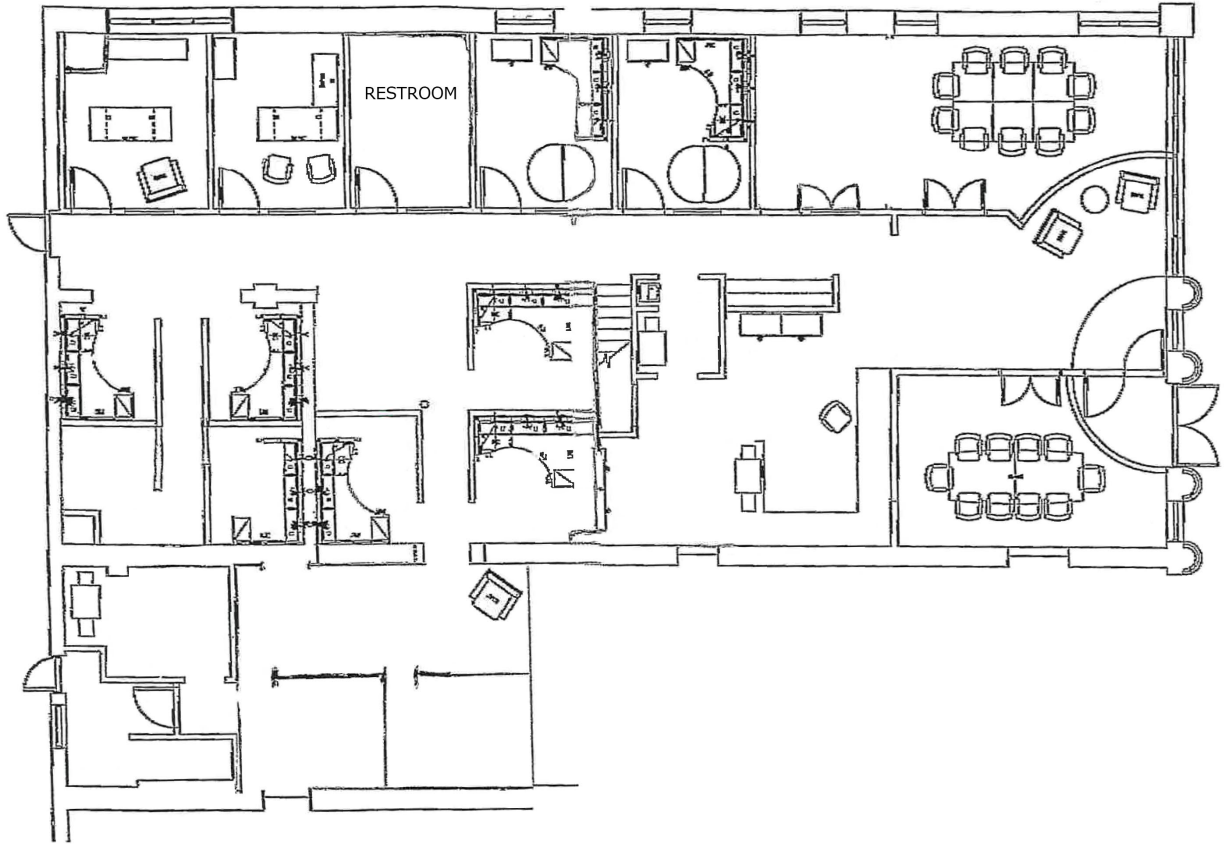
# NEWMARK

The information contained herein has been obtained from sources deemed reliable but has not been verified and no guarantee, warranty or representation, either express or implied, is made with respect to such information. Terms of sale or lease and availability are subject to change or withdrawal without notice.

15 N 4<sup>th</sup> Street

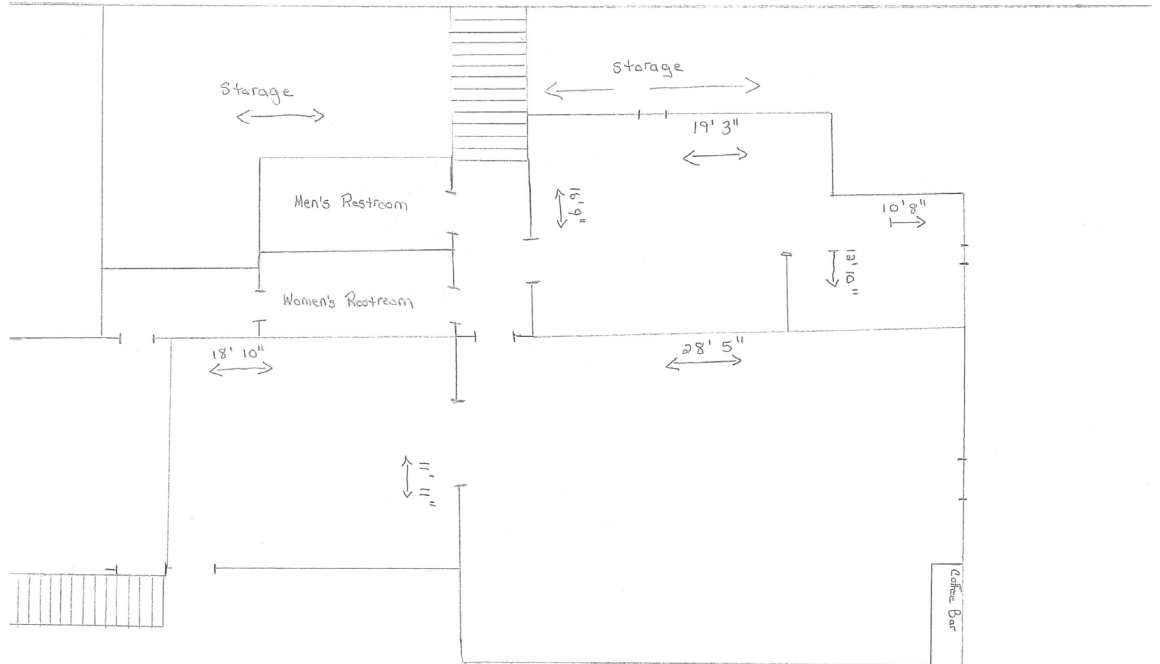


1<sup>st</sup> Floor Plan

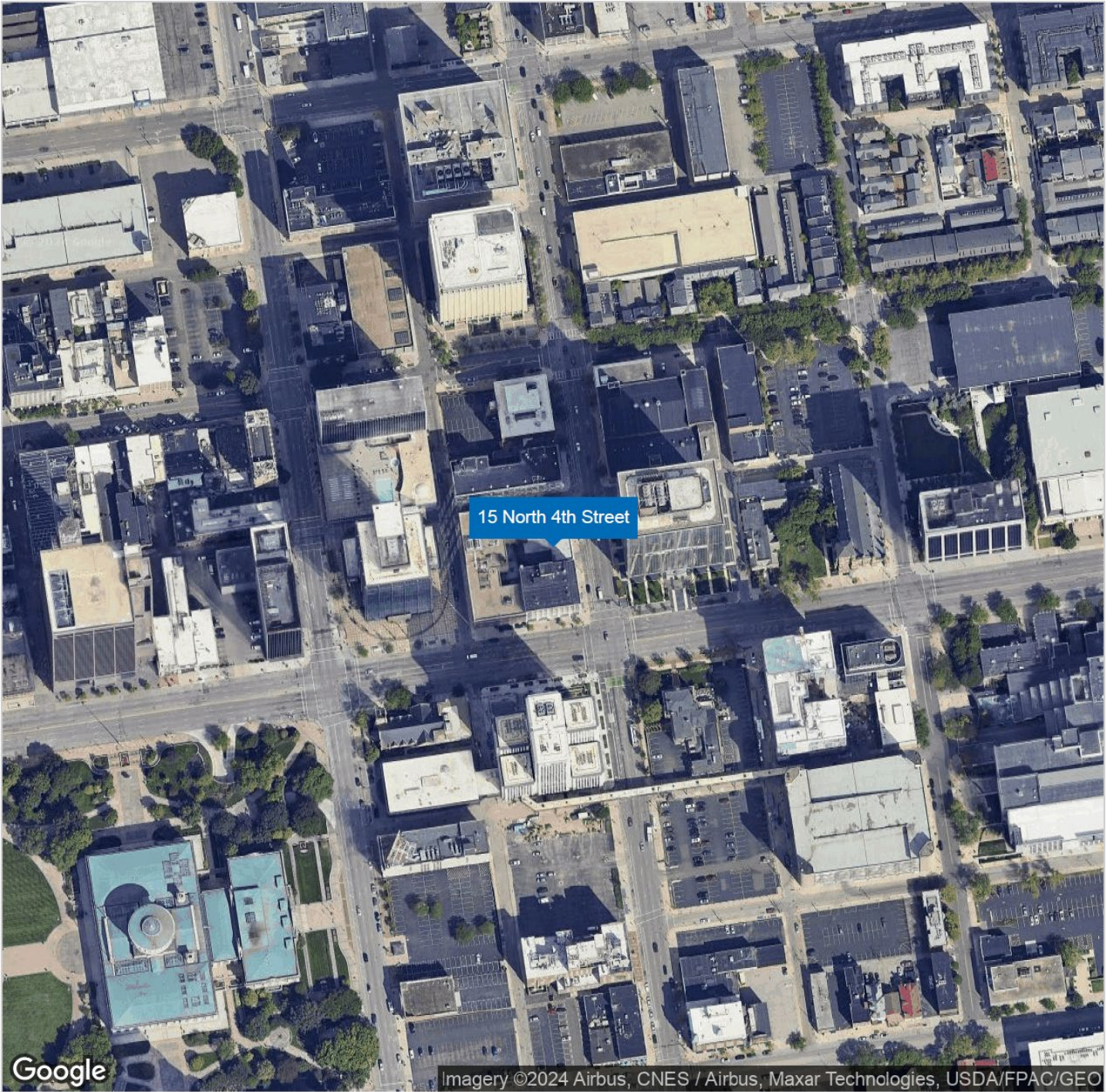


23 NORTH FOURTH STREET / 1ST FLOOR PLAN  
SCALE: 1/4" = 1'-0"

Basement Floor Plan



15-23 N 4<sup>th</sup> Street



15-23 N 4<sup>th</sup> Street

