

# FOR SALE



## TRAPP ROAD

1256 Trapp Road  
Eagan, MN 55121

### Features:

Sale Price	\$8,400,000.00
Property Type	Industrial
Floors	1
Year Built	1968
County	Dakota
Building Size	64,123 square feet
Acreage	7.0 acres
PID	10-26880-01-010
Zoning	Industrial Preferred
R.E. Taxes	\$113,576.00
Parking	Surface parking in front plus large fenced parking/storage in back.
Other	<ul style="list-style-type: none"><li>◆ Great Eagan Location</li><li>◆ Minutes to MSP Airport and Mall of America</li><li>◆ Easy access to 494, Hwy 55 and 35-E</li><li>◆ Outdoor storage area</li></ul>



### About The Area:

Eagan is a Southern suburb of St. Paul/Minneapolis with an estimated population of 69,000 and is the 4th largest suburb in the Twin Cities. This property is located at the northern edge of Eagan city limits.

### About The Building:

This industrial building was constructed in 1968 but has a modern interior with front desk, offices, office cubicles and kitchenette. It is conveniently located just south of 494 with access from Pilot Knob Rd or Hwy 55. This move-in ready property provides a quiet professional building with ample warehouse and fenced outdoor storage.

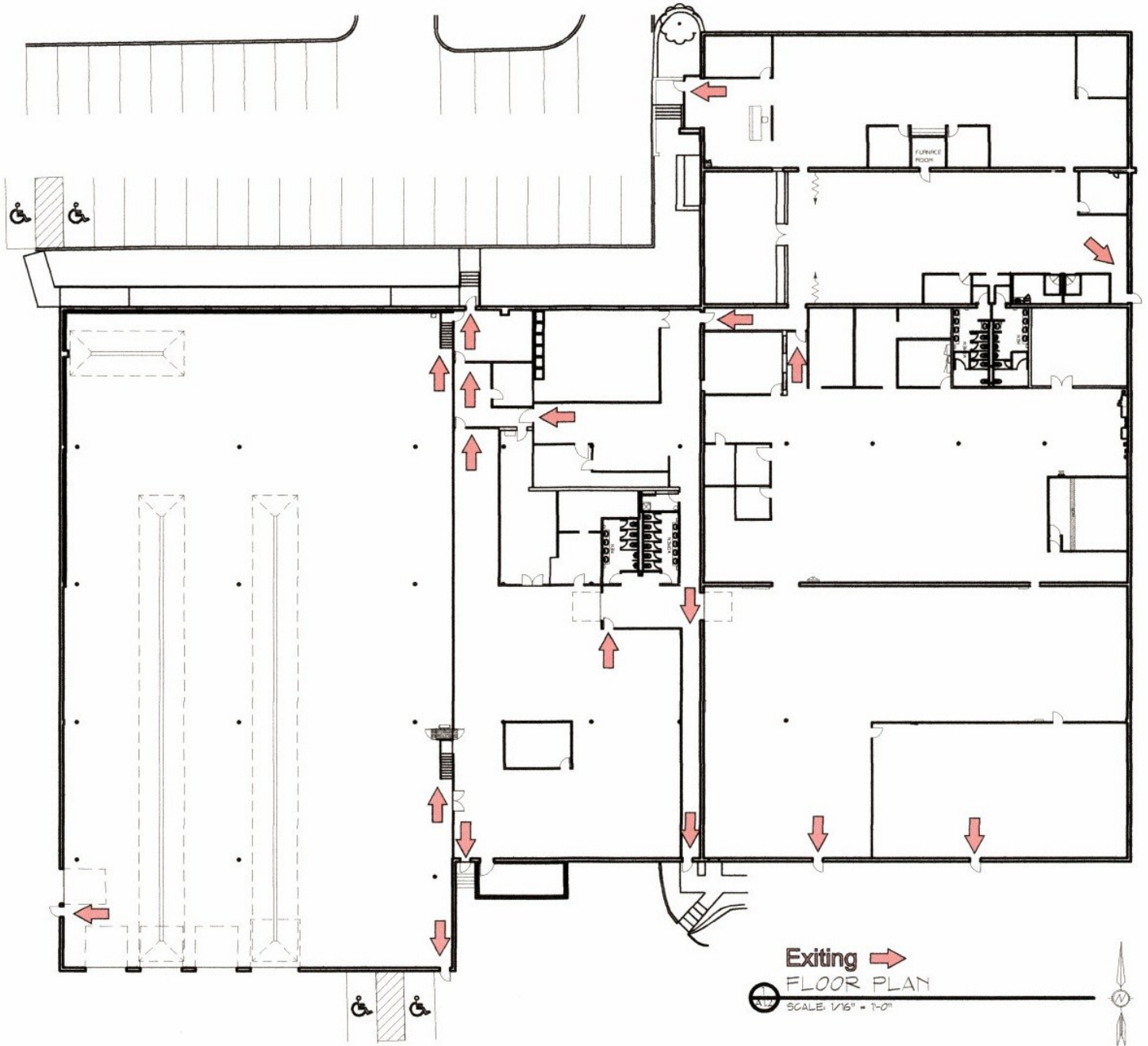


JBL COMPANIES

3440 Federal Drive, Suite 250, Eagan, MN 55122 | Phone: 651-686-0212 | Fax: 651-686-6113 | [jbroker@jblcompanies.com](mailto:jbroker@jblcompanies.com)

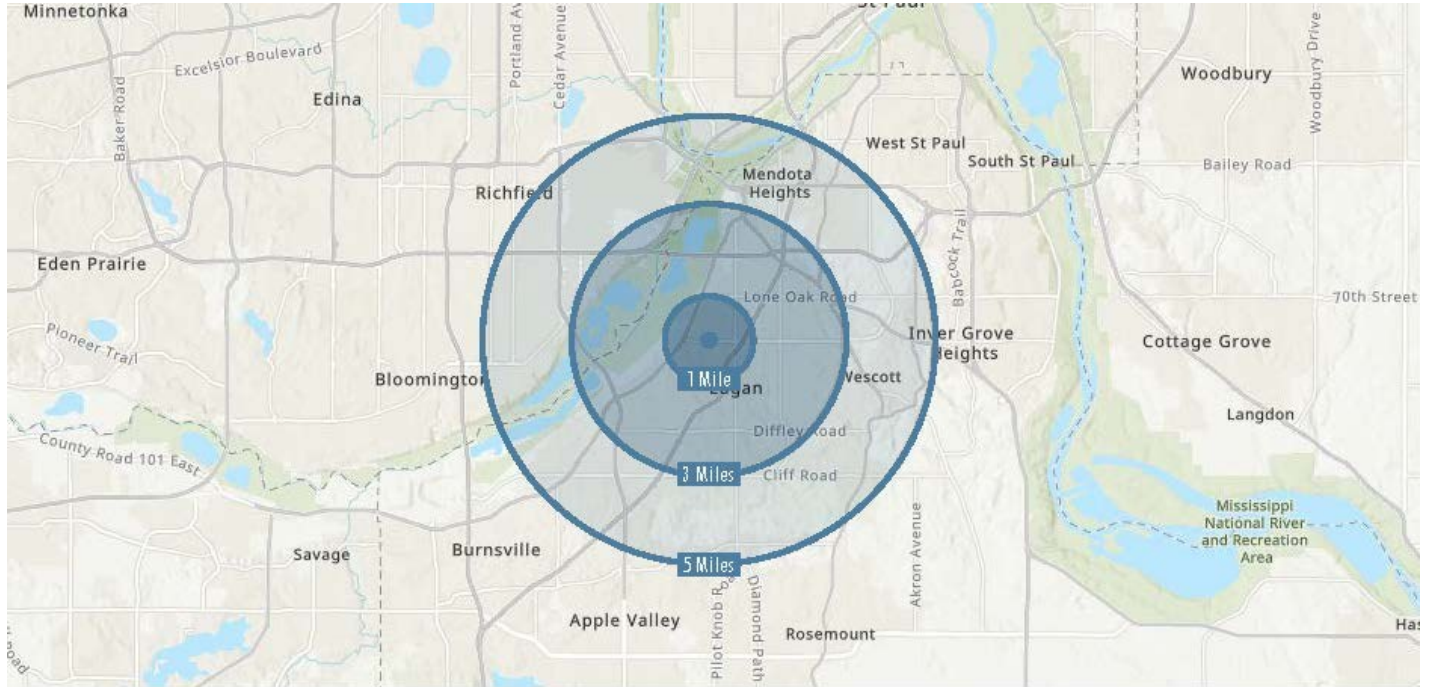
[www.jblcompanies.com](http://www.jblcompanies.com)

# FLOOR PLAN



Exiting →  
FLOOR PLAN  
SCALE: 1/16" = 1'-0"

## EAGAN DEMOGRAPHICS



2022 Summary	1 Mile	3 Miles	5 Miles
Population	8,272	48,718	144,684
Households	3,685	21,285	58,319
Families	1,923	12,299	36,355
Average Household Size	2.23	2.27	2.45
Owner Occupied Housing Units	1,978	13,392	38,868
Renter Occupied Housing Units	1,707	7,894	19,451
Median Age	37.1	38.7	39.3
Median Household Income	\$81,543	\$90,248	\$91,081
Average Household Income	\$105,938	\$123,580	\$125,594

1256 Trapp Road  
Eagan, MN 55121

## ADDITIONAL PHOTOS

