

Sharon City Center

100-130 South Water Ave
Sharon, PA 16146

Join the Primary Shopping Center in the City of Sharon



Property Information

- + Multiple in-line spaces available:
 - 14,000 SF
 - 12,000 SF
 - 9,720 SF
 - 7,326 SF
 - 2,400 SF
- + Proposed outlot available
- + Major retail tenants include Save-A-Lot, Family Dollar, Dollar Tree, and AutoZone
- + Recently redeveloped 36,000 SF space for junior boxes
- + Located in the heart of downtown Sharon with close proximity to:
 - Hermitage, PA retail corridor: 3.8 miles
 - Penn State Shenango campus: 0.6 miles
 - I-80 interchange: 5.5 miles
 - Pennsylvania-Ohio border: 1 mile

Sharon City Center

100-130 South Water Ave | Sharon, PA 16146

For Lease



POPULATION



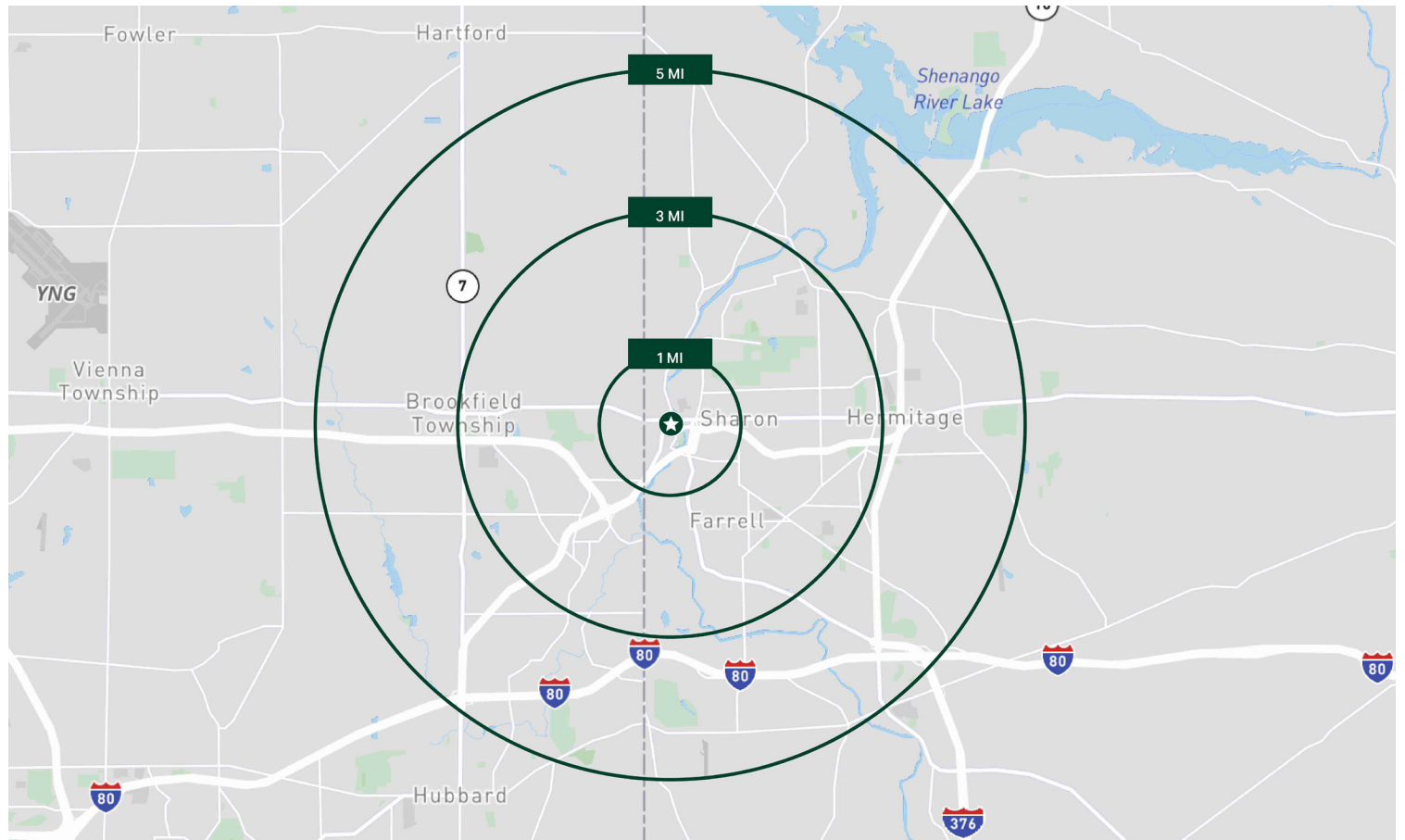
HOUSEHOLDS



DAYTIME
POPULATION



AVG. HOUSEHOLD
INCOME



Sharon City Center

100-130 South Water Ave | Sharon, PA 16146

For Lease

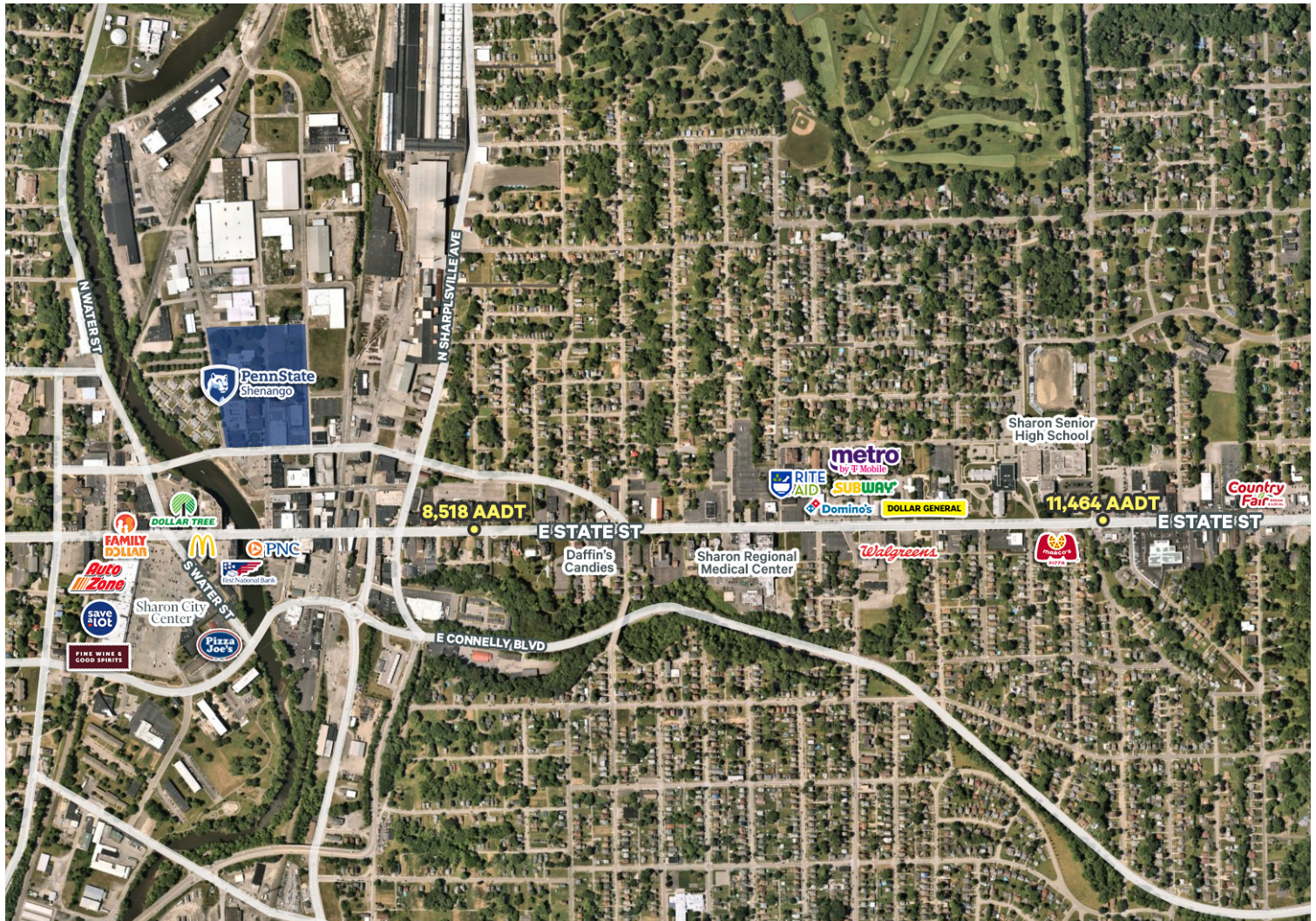


Unit	Tenant Name	Sq. Ft.
60	AVAILABLE	14,000
80	Dollar Tree	12,000
100	Family Dollar	12,000
110	AVAILABLE	9,720
130	Tobacco 4 Less	4,500
150	AVAILABLE	2,400
170	AVAILABLE	7,326
180	Auto Zone	10,000
190	AVAILABLE	12,000
200	Save-A-Lot	18,450
210	Fine Wine & Good Spirits	4,100
220	Players Club of Sharon	3,009
230	Cricket Wireless	1,500
PO	PROPOSED OUTLOT	

Sharon City Center

100-130 South Water Ave | Sharon, PA 16146

For Lease



Contact Us

Justin Ifedigbo

Associate

+1 412 394 9834

justin.ifedigbo@cbre.com

Robert Gold, CCIM

First Vice President

+1 412 316 2397

robert.gold@cbre.com

© 2026 CBRE, Inc. All rights reserved. This information has been obtained from sources believed reliable, but has not been verified for accuracy or completeness. You should conduct a careful, independent investigation of the property and verify all information. Any reliance on this information is solely at your own risk. CBRE and the CBRE logo are service marks of CBRE, Inc. All other marks displayed on this document are the property of their respective owners, and the use of such logos does not imply any affiliation with or endorsement of CBRE. Photos herein are the property of their respective owners. Use of these images without the express written consent of the owner is prohibited.