



## PROPERTY DESCRIPTION

Centrally located in the Santa Fe district, this property offers an excellent clear height for storage, tooling, and other industrial needs in a wide open space ideal for many users. Completely remodeled in 2026, a tenant can feel confident that every aspect of this building has been recently touched and is ready for a new use.

## PROPERTY HIGHLIGHTS

- Central OKC Right off I-235
- 20 Ft Clear Height at center
- Private Outside Storage in rear
- 2x12 ft, 1x8 ft bay doors
- 400 Amp 3-Phase Power
- Paved approach and parking

## OFFERING SUMMARY

<b>Lease Rate:</b>	\$3,500 per month (NNN)
<b>Available SF:</b>	4,000 SF
<b>Lot Size:</b>	6,801 SF
<b>Zoning:</b>	I-2

Andrew Holder

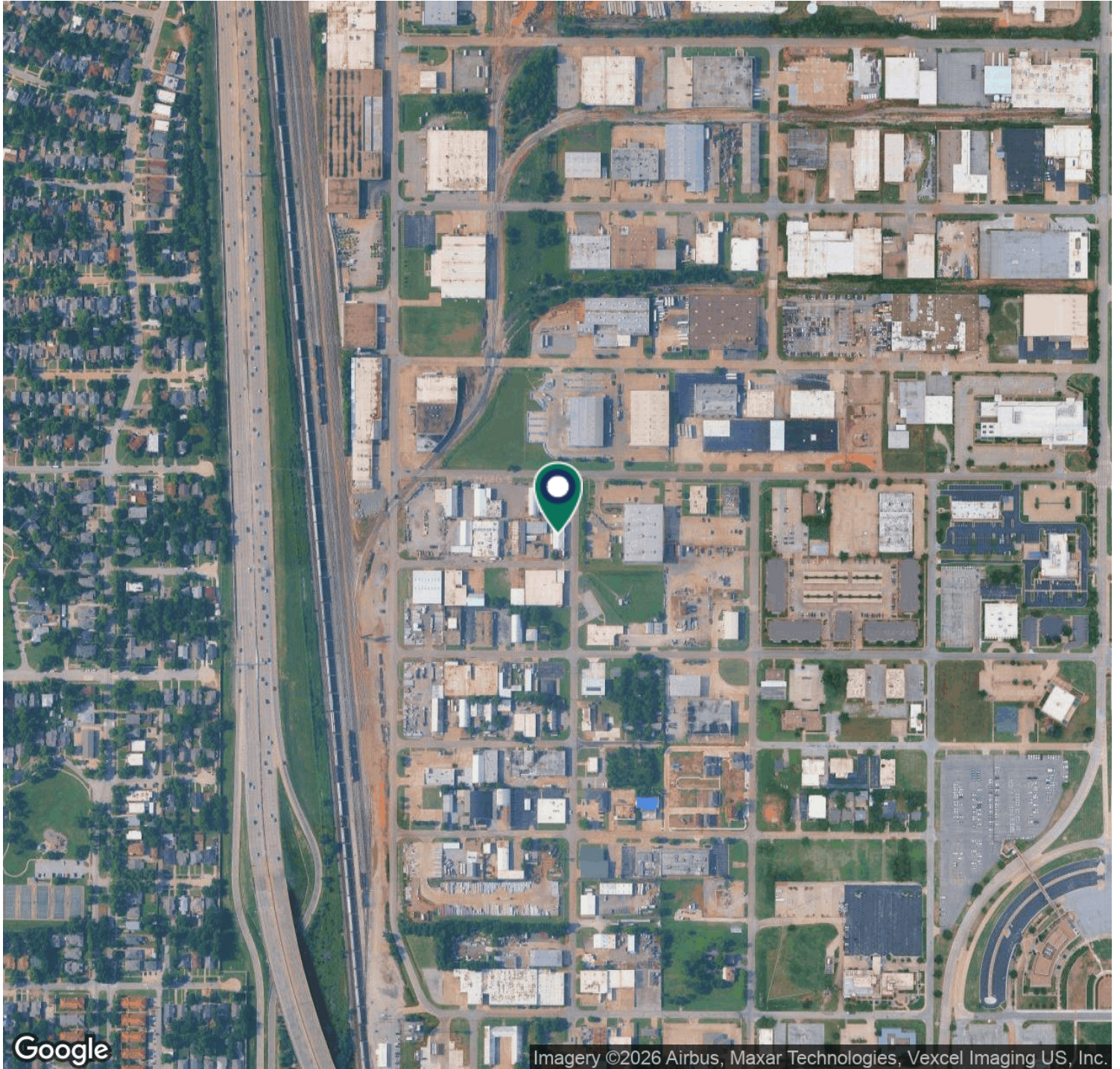
aholder@priceedwards.com  
405.239.1273

PRICE  
EDWARDS  
AND COMPANY



**Andrew Holder**  
aholder@priceedwards.com  
405.239.1273

**PRICE  
EDWARDS**  
AND COMPANY



**Andrew Holder**

aholder@pricedwards.com  
405.239.1273

**PRICE  
EDWARDS**  
AND COMPANY