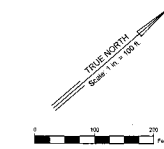
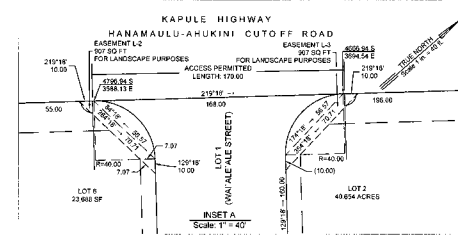




Available
Reserved
Sold

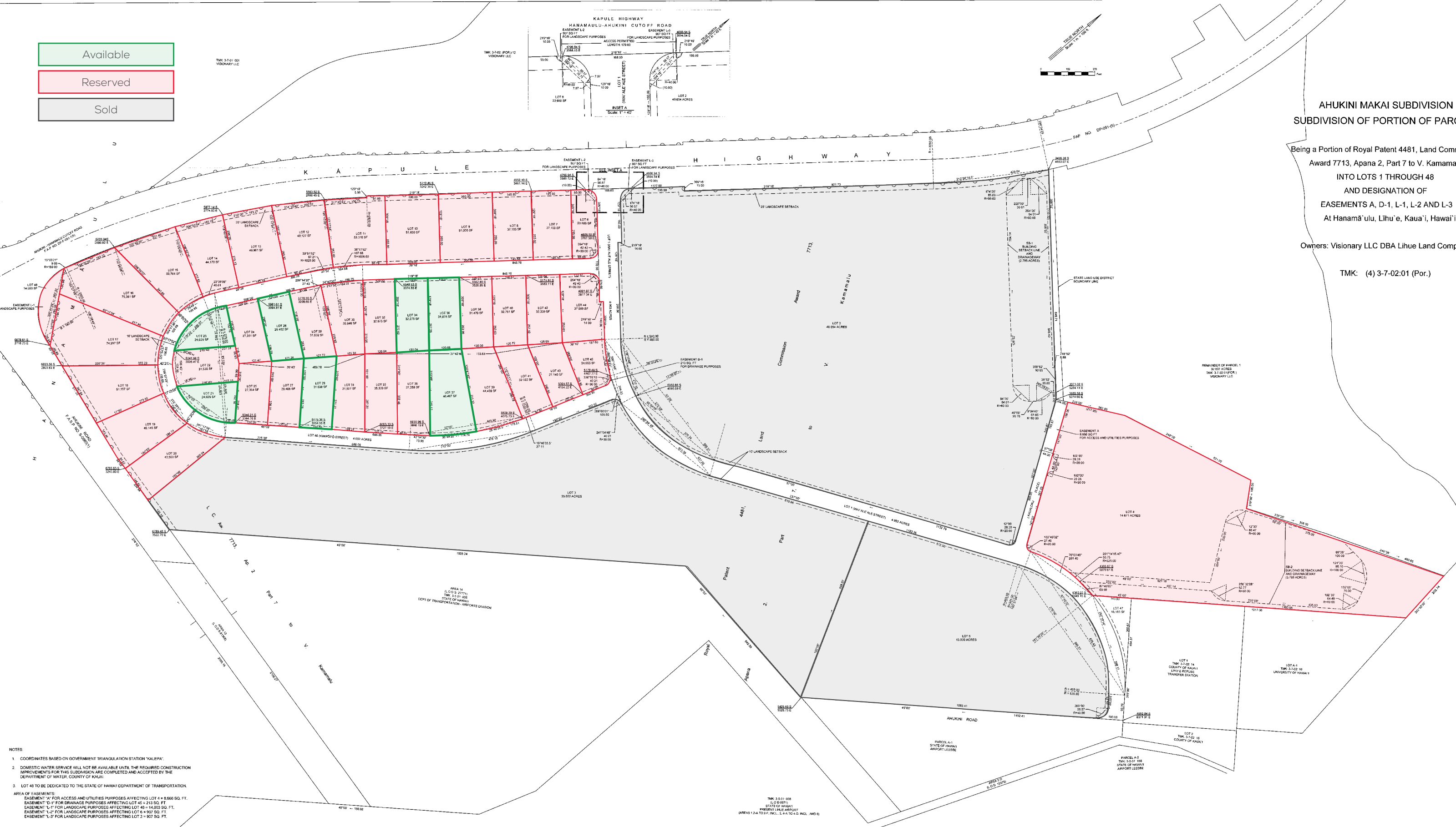


**AHUKINI MAKAI SUBDIVISION
SUBDIVISION OF PORTION OF PARCEL**

Being a Portion of Royal Patent 4481, Land Commission Award 7713, Apana 2, Part 7 to V. Kamamalu INTO LOTS 1 THROUGH 48 AND DESIGNATION OF EASEMENTS A, D-1, L-1, L-2 AND L-3 At Hanama'ulu, Lihue, Kaua'i, Hawai'i

Owners: Visionary LLC DBA Lihue Land Company

TMK: (4) 3-7-02:01 (Por.)



NOTES:

- COORDINATES BASED ON GOVERNMENT TRIANGULATION STATION "KALEPA".
- DOMESTIC WATER SERVICE WILL NOT BE AVAILABLE UNTIL THE REQUIRED CONSTRUCTION IMPROVEMENTS FOR THIS SUBDIVISION ARE COMPLETED AND ACCEPTED BY THE DEPARTMENT OF WATER, COUNTY OF KAUAI.
- LOT 48 TO BE DEDICATED TO THE STATE OF HAWAII DEPARTMENT OF TRANSPORTATION.

AREA OF EASEMENTS:

- EASEMENT "A" FOR ACCESS AND UTILITIES PURPOSES AFFECTING LOT 4 = 8,666 SQ. FT.
- EASEMENT "D-1" FOR DRAINAGE PURPOSES AFFECTING LOT 42 = 213 SQ. FT.
- EASEMENT "L-1" FOR LANDSCAPE PURPOSES AFFECTING LOT 45 = 14,930 SQ. FT.
- EASEMENT "L-2" FOR LANDSCAPE PURPOSES AFFECTING LOT 6 = 907 SQ. FT.
- EASEMENT "L-3" FOR LANDSCAPE PURPOSES AFFECTING LOT 2 = 907 SQ. FT.

TMK 3-5-01:008 (L.O.D.#971) STATE OF HAWAII PRESENT LULU AIRPORT (AREAS 1,2,4 TO 2,2 INCL. 3,4,4 TO 4,5 INCL. AND 6)