

2108 CENTURY WAY
BOISE, ID



FOR SUBLEASE

OFFICE FLEX SPACE

±15,000 SF BUILDING ON 1.24 ACRE LOT

\$9.95 / SF NNN

KARENA GILBERT, SIOR

Vice President

+1 208 488 3164

karena.gilbert@cbre.com

SAMUEL LUNDY

Associate

+1 208 600 2684

samuel.lundy@cbre.com

CBRE



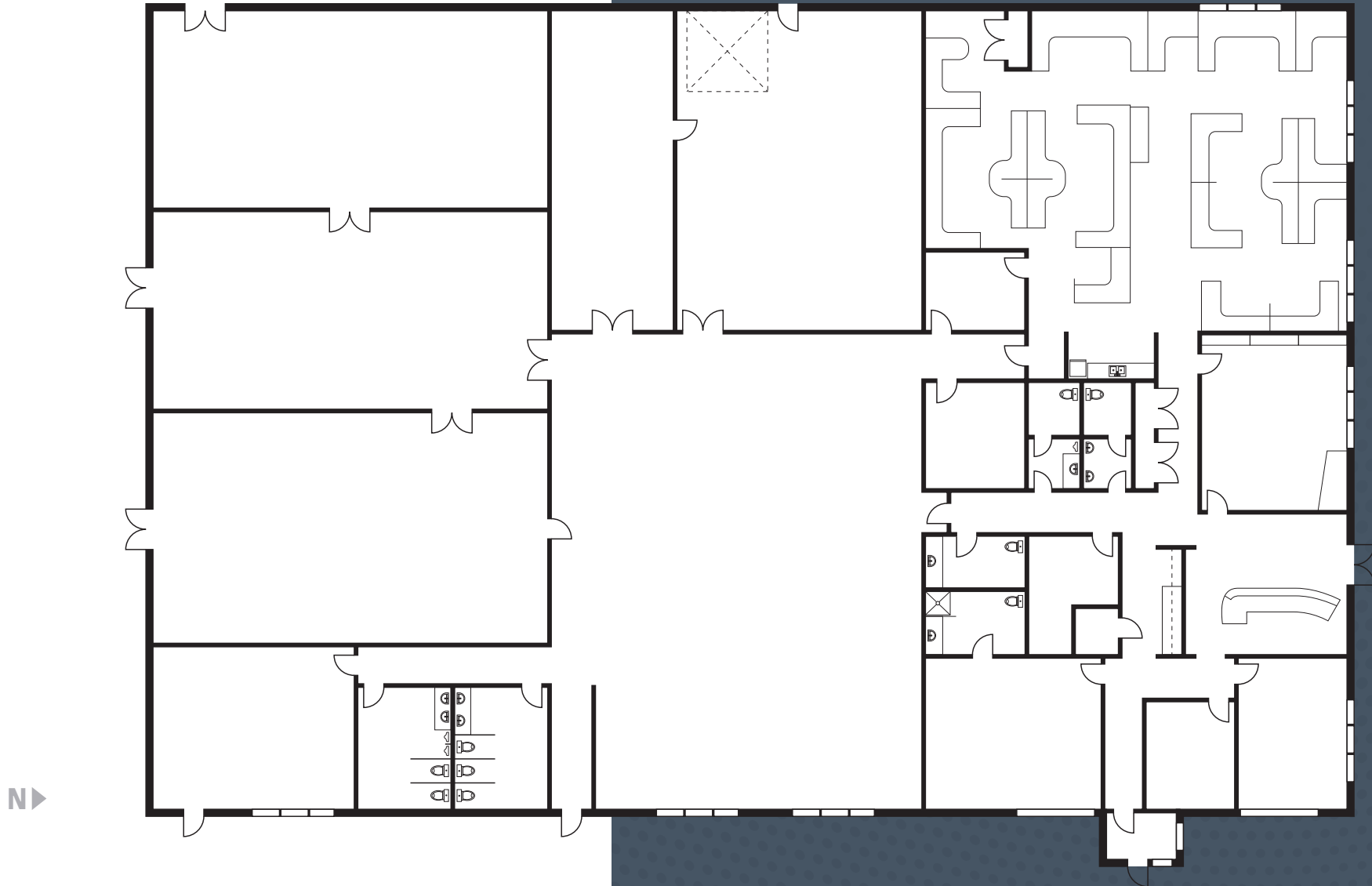
PROPERTY OVERVIEW

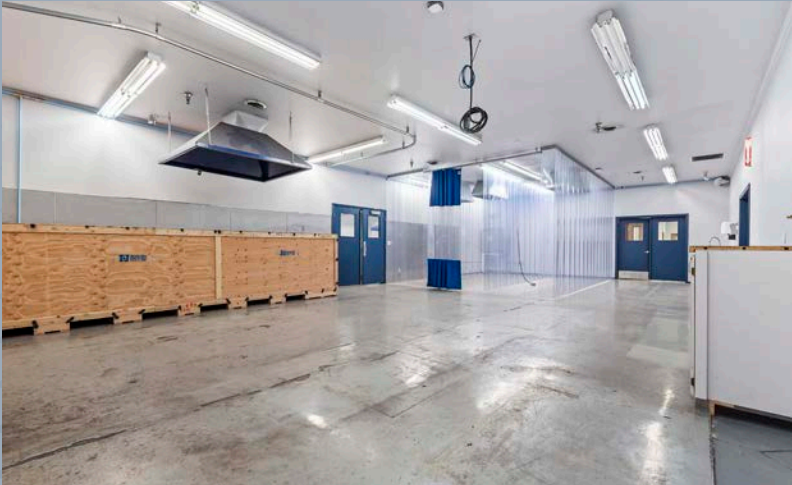
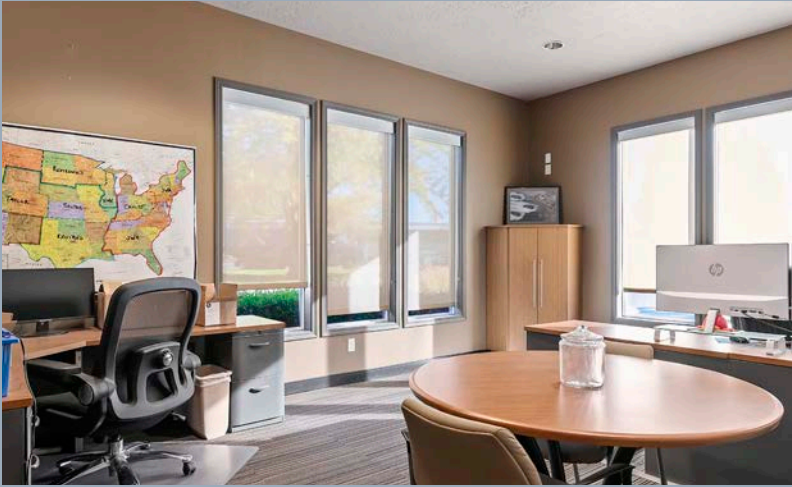
- Versatile Mixed-Use Potential
- Temperature Controlled Throughout
- Monument Signage Opportunity
- Potential for Yard Space or Additional Parking
- 10' Ceilings
- Centrally Located - Easy Access to I-84 and the 184 Downtown Connector
- Secured Entry & Lobby
- Plumbed Air Compressor
- Zoned: City of Boise I-1
- Do Not Disturb Tenant - Contact Broker for Touring Instructions

Available SF	±15,000 SF
Building Type	Office Flex Space
Lease Rate	\$9.95 / SF
Lease Type	NNN
Lot Size	1.24 Acres

FLOOR PLAN

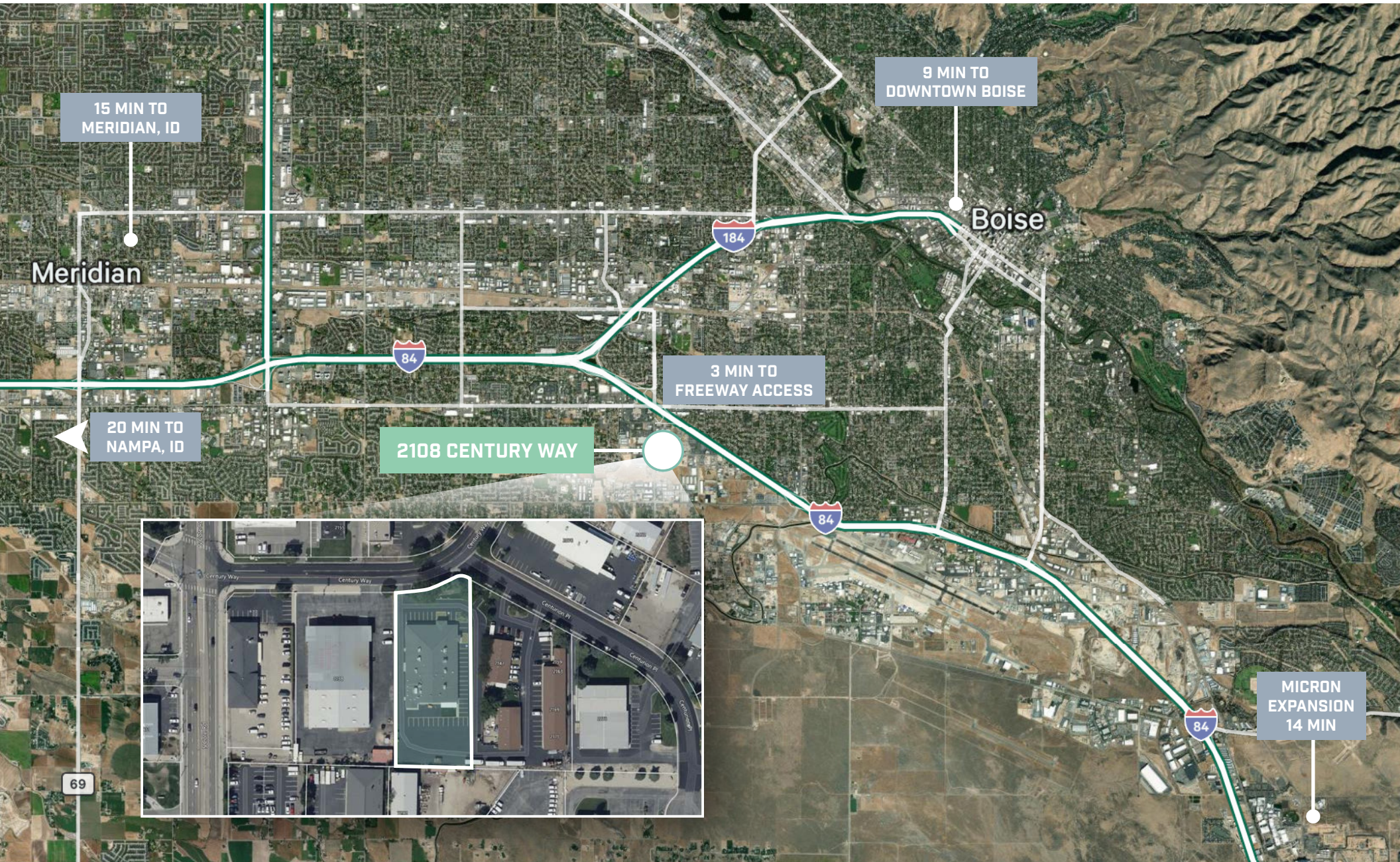
±15,000 SF standalone office flex building for sublease



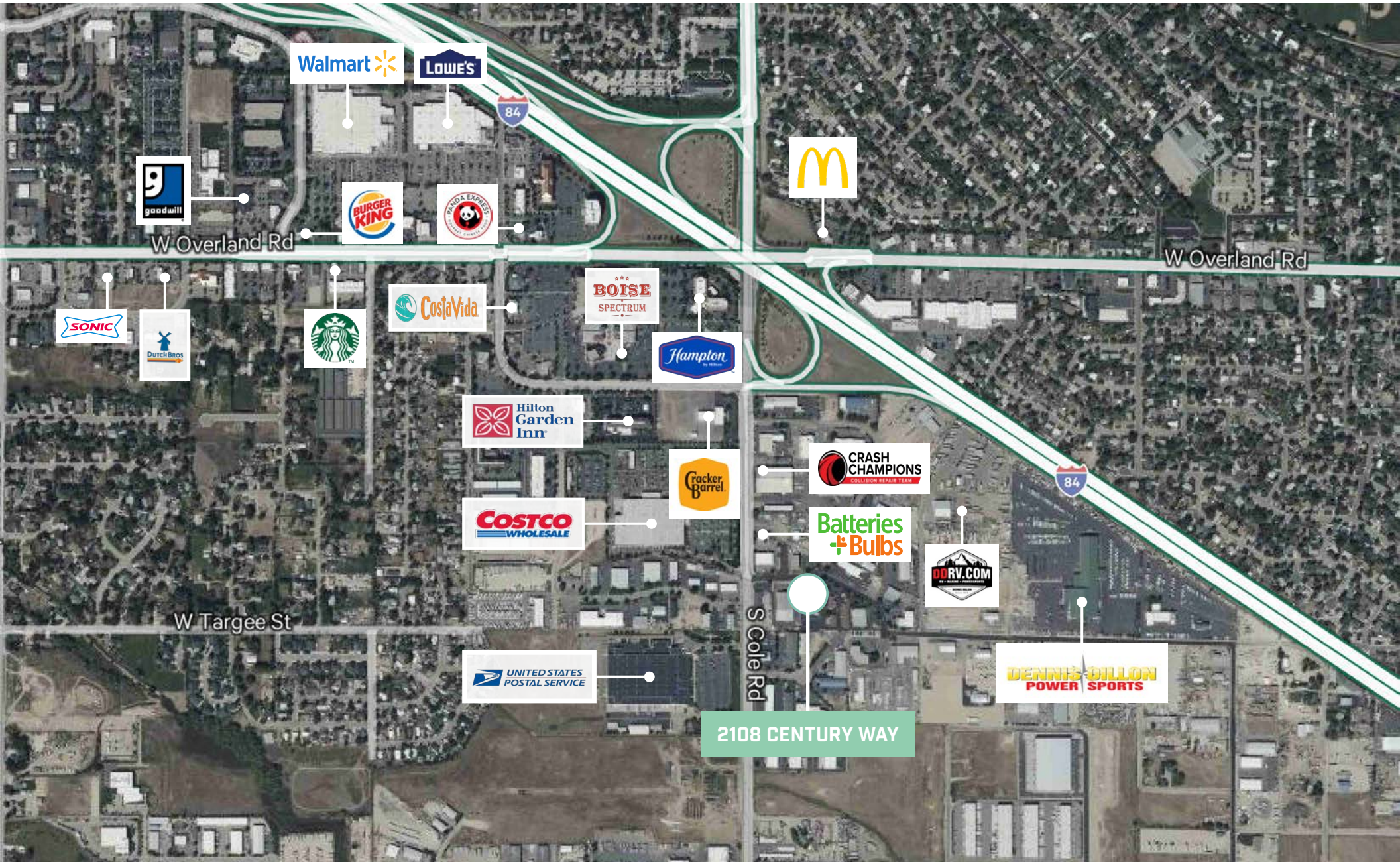




CENTRALLY LOCATED



AMENITIES





**±15,000 SF
FOR SUBLEASE**

**2108
CENTURY
WAY**

KARENA GILBERT, SIOR

Vice President

+1 208 488 3164

karena.gilbert@cbre.com

SAMUEL LUNDY

Associate

+1 208 600 2684

samuel.lundy@cbre.com

CBRE

© 2026 CBRE, Inc. All rights reserved. This information has been obtained from sources believed reliable but has not been verified for accuracy or completeness. CBRE, Inc. makes no guarantee, representation or warranty and accepts no responsibility or liability as to the accuracy, completeness, or reliability of the information contained herein. You should conduct a careful, independent investigation of the property and verify all information. Any reliance on this information is solely at your own risk. CBRE and the CBRE logo are service marks of CBRE, Inc. All other marks displayed on this document are the property of their respective owners, and the use of such marks does not imply any affiliation with or endorsement of CBRE. Photos herein are the property of their respective owners. Use of these images without the express written consent of the owner is prohibited. PMStudio_April2026