

2923 S. Tryon

Suite 250

CHARLOTTE, NC 28203

FOR LEASE - 1,055 SF | TURNKEY SALON / CONVERTIBLE TO
CREATIVE OFFICE | SOUTHBEND - NEAR RAIL TRAIL



REDPART.COM

711 Central Avenue
Charlotte, NC 28204

DEVELOPMENT + BROKERAGE + MANAGEMENT

JON BEALL

704.962.0606
jon@redpart.com

RED
PARTNERS

Executive Summary

PAD DETAILS:

Size: Total Area: (1,055 SF)
1st Floor: (839 SF)
Loft: (216 SF)

Asking Rate: **\$3,500 / Month (NNN)**

Available: Immediate

AS-IS:
Turnkey Salon

Convertible:
Creative Office

5 styling stations

Open office work area

2 wash stations

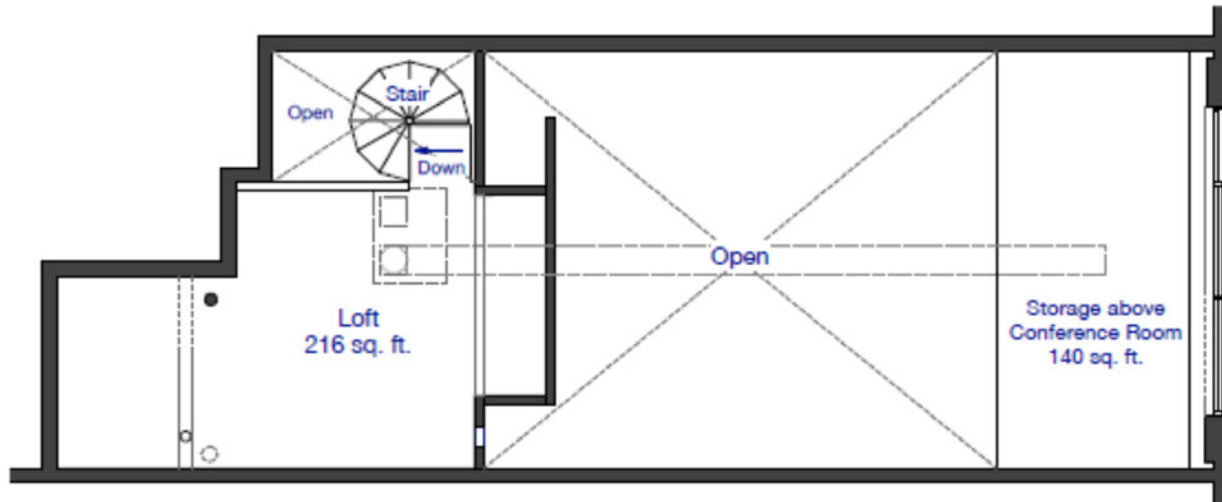
Plumbing in place for wet
bar/kitchen



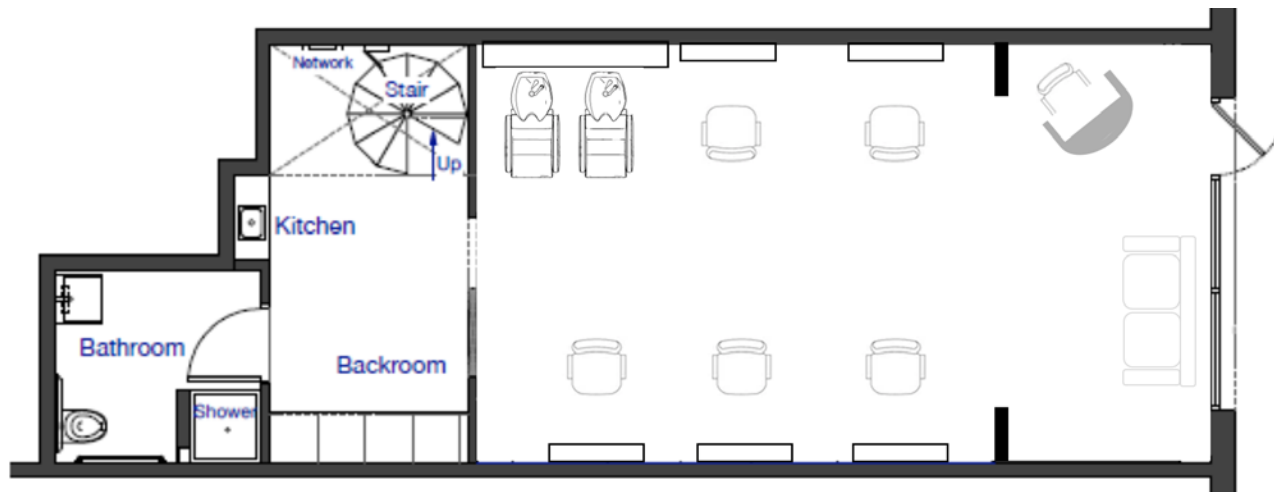
KEY HIGHLIGHTS:

- Move in Ready - Salon equipment for purchase separately; conversion to open office requires minimal modification.
- Large private bathroom with shower – **perfect for Rail Trail users, bike commuters, post workout rinse-off.**
- Modern design with exposed brick, wood, and steel throughout the space.
- Located in SouthEnd.
- Easy walking distance to New Bern Light Rail station (≈1,000 feet)
- Walking distance to restaurants, breweries, gyms, and other SouthEnd amenities.
- Surrounded by new apartment developments.





LOFT



1ST FLOOR





2923 S. Tryon
Suite 250

CHARLOTTE, NC 28203

FOR LEASE - 1,055 SF | TURNKEY SALON / CONVERTIBLE TO
CREATIVE OFFICE | SOUTHBEND - NEAR RAIL TRAIL

JON BEALL

704.962.0606
jon@redpart.com

711 Central Avenue
Charlotte, NC 28204

REDPART.COM

DEVELOPMENT + BROKERAGE + MANAGEMENT

RED
PARTNERS