

FOR SALE

12600 WESTMINSTER AVE, UNIT C • GARDEN GROVE, CA



Voit
REAL ESTATE SERVICES

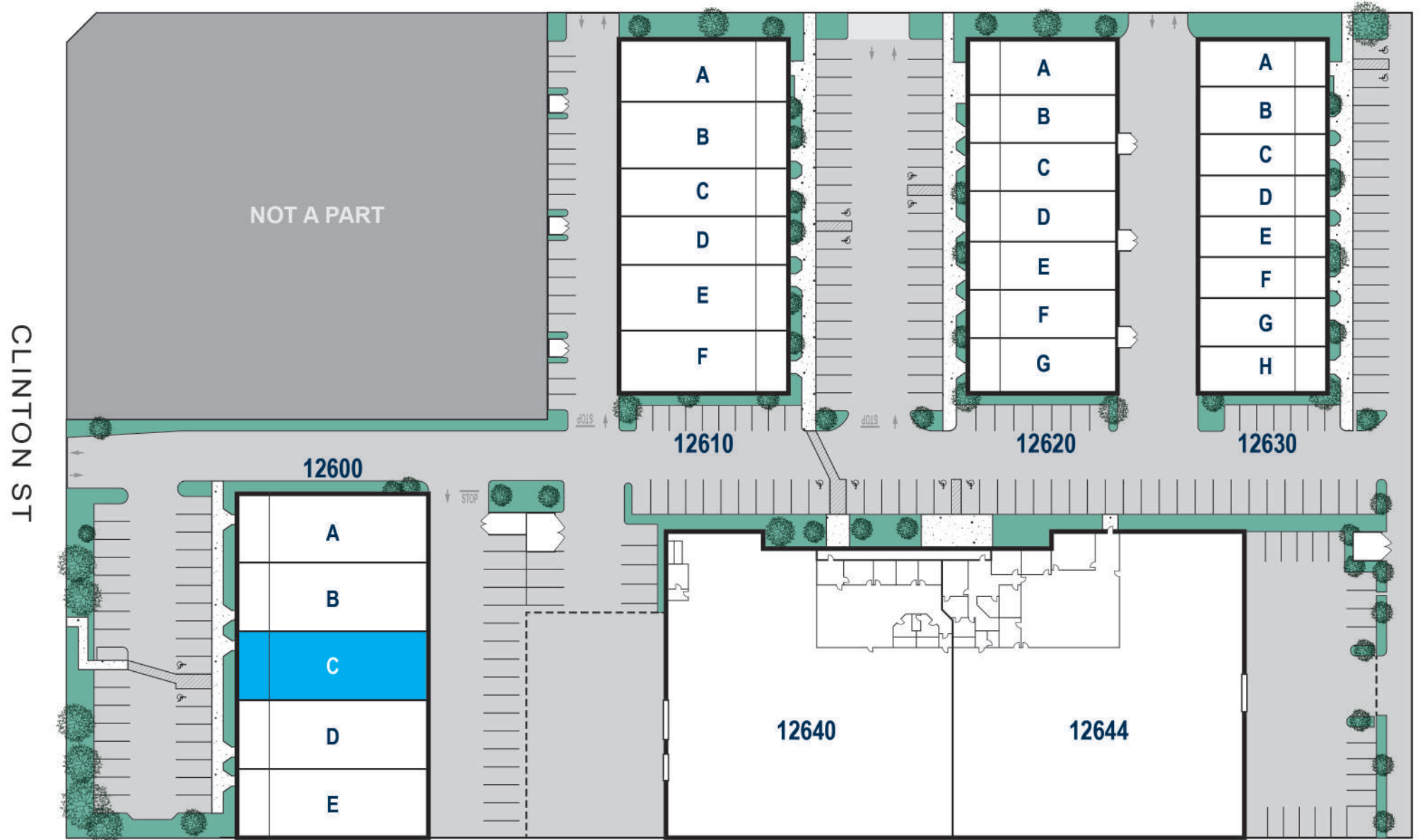
GARRET GILLILAND
Vice President
ggilliland@voitco.com
909.545.80122
Lic. #02075196

±3,327 SF

FOR SALE

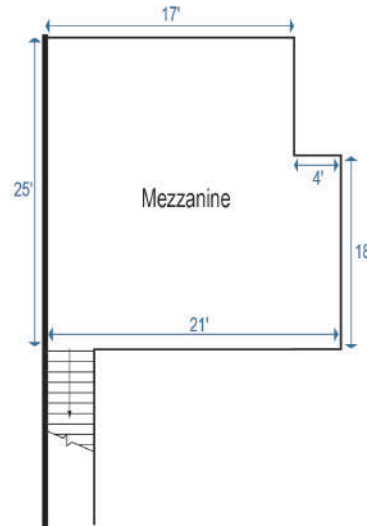
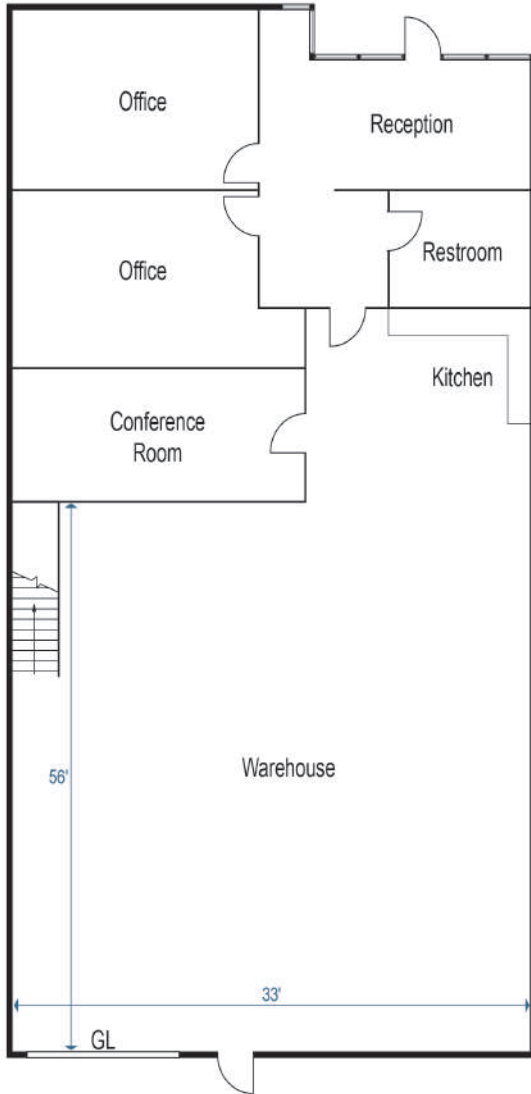
12600 WESTMINSTER AVE, UNIT C • GARDEN GROVE, CA

WESTMINSTER AVE



FOR SALE

12600 WESTMINSTER AVE, UNIT C • GARDEN GROVE, CA



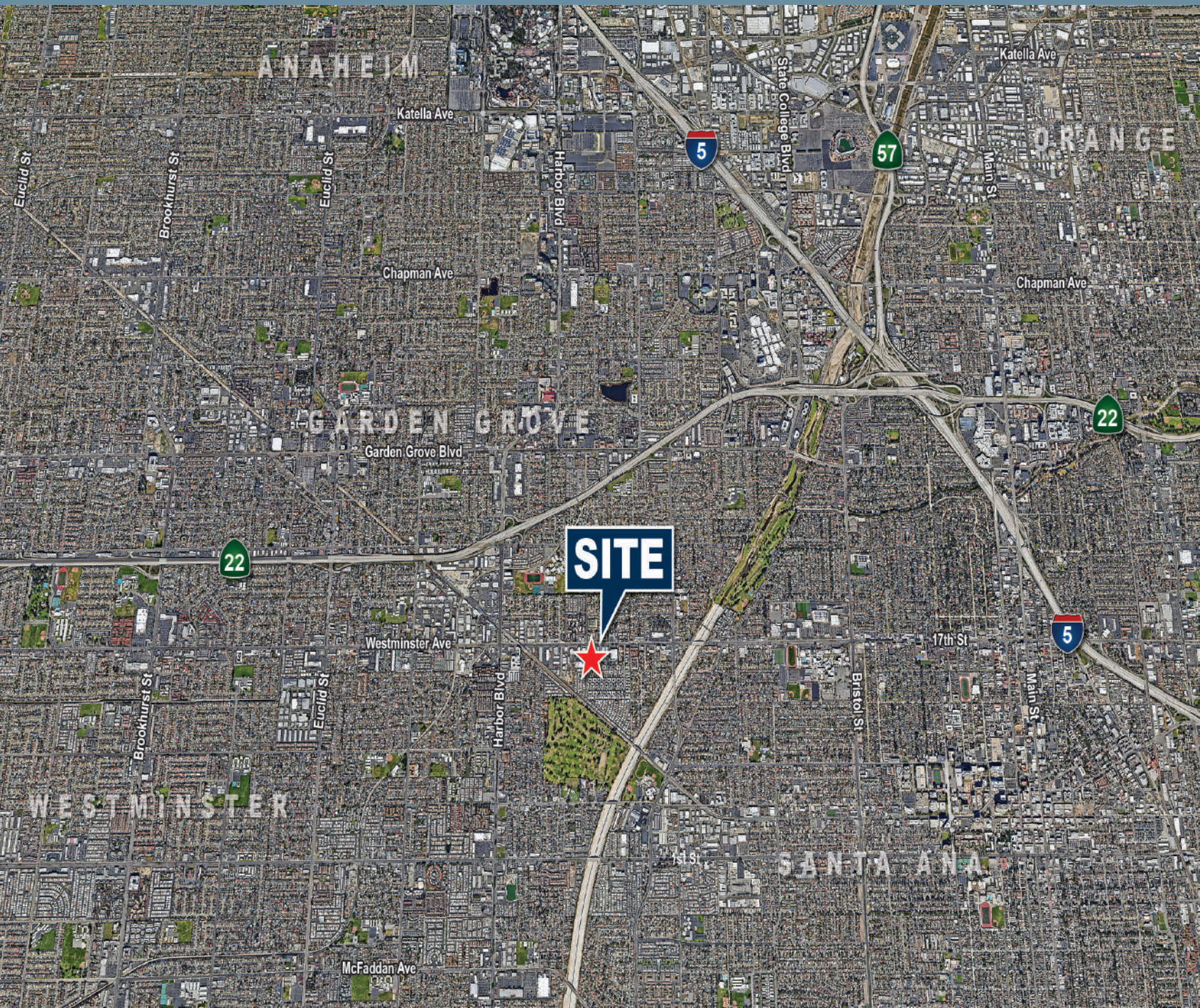
Property Highlights:

- Industrial Condo Part of Garden Grove Commerce Park
- One (1) Ground Level Door (12 x 14 ft)
- ±500 SF Bonus Storage Mezzanine
- ±19' min Clear Height
- Fully Fire Sprinklered
- Two (2) Warehouse Skylights
- Power 200 Amps 120/208 3 Phase
- Electrical Distribution in Warehouse
- LED Lights in Offices and Warehouse
- Parking Ratio: ±2.25 / 1,000 SF

FOR SALE



FOR SALE



GARRET GILLILAND
Vice President
ggilliland@voitco.com
909.545.80122
Lic. #02075196

Voit
REAL ESTATE SERVICES

2400 E. Katella Avenue, Suite 750
Anaheim, CA 92806

714.978.7880 | 714.978.9431 Fax
Lic #01991785 | www.voitco.com

Licensed as Real Estate Salespersons by the DRE. The information contained herein has been obtained from sources we deem reliable. While we have no reason to doubt its accuracy, we do not guarantee it. ©2026 Voit Real Estate Services, Inc. All Rights Reserved. Lic. #01991785