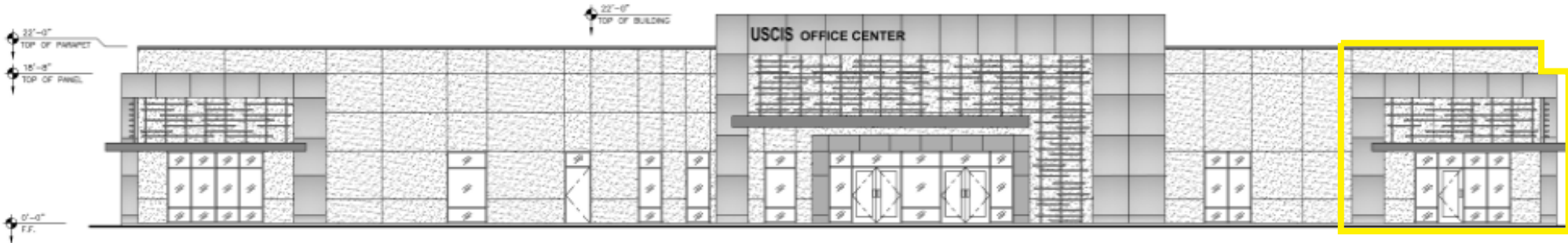


For Lease

IMPERIAL OFFICE SPACE

2406 Marshall Ave, Imperial, CA 92251



Available: 3,000 SF

- Brand New Construction - Delivery March 2027
- High Quality Office Space Next to New USCIS Center
- Easy Access & Plenty of Parking
- Central Location in Imperial County



Rob Bloom, VP | 858) 405-5342 | Rob@duhscommercial.com
DRE# 01302163

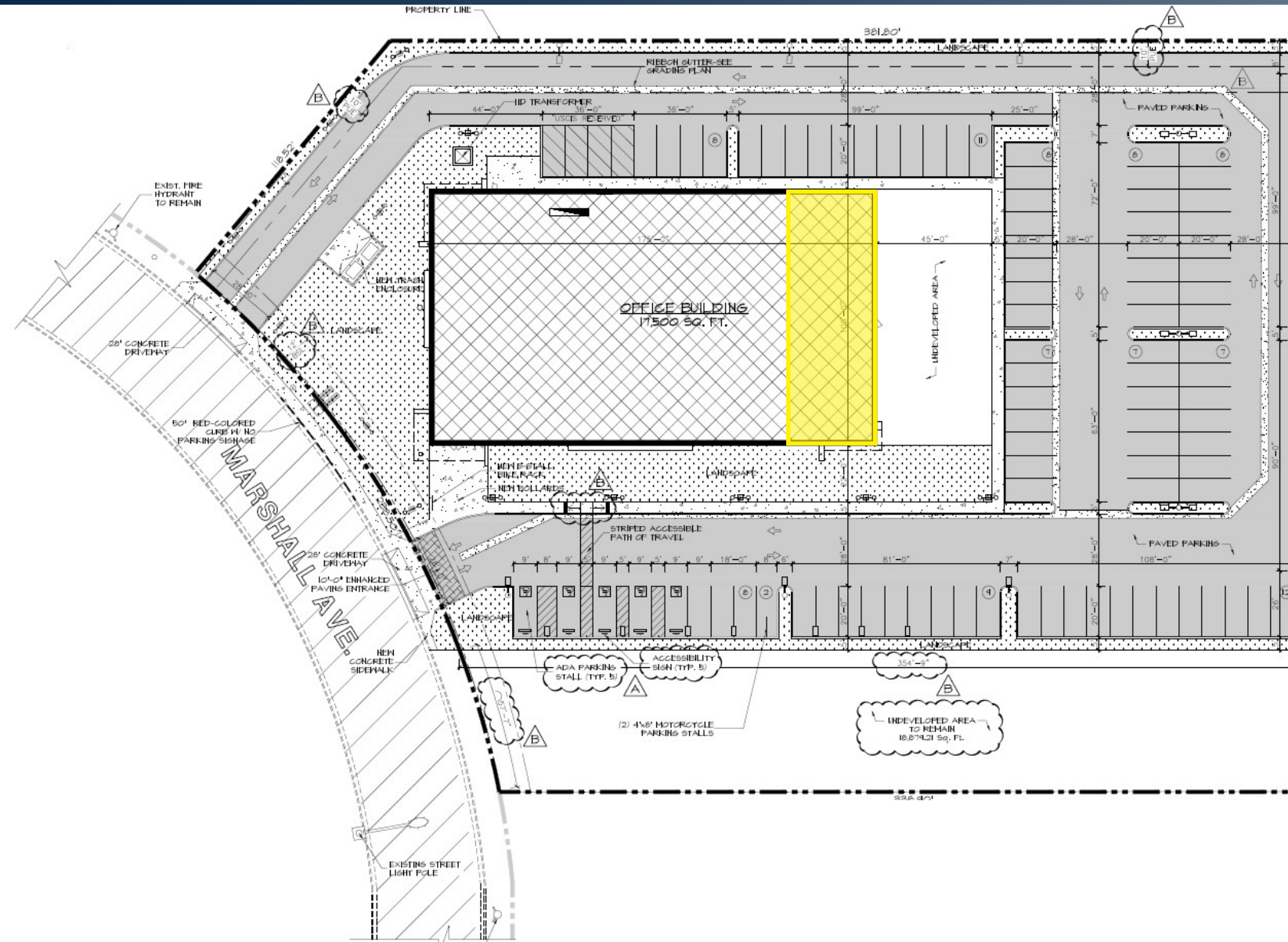
No warranty or representation is made to the accuracy of the foregoing information. Terms of sale or lease and availability are subject to change or withdrawal without notice.



Site Plan

IMPERIAL OFFICE SPACE

2406 Marshall Ave, Imperial, CA 92251



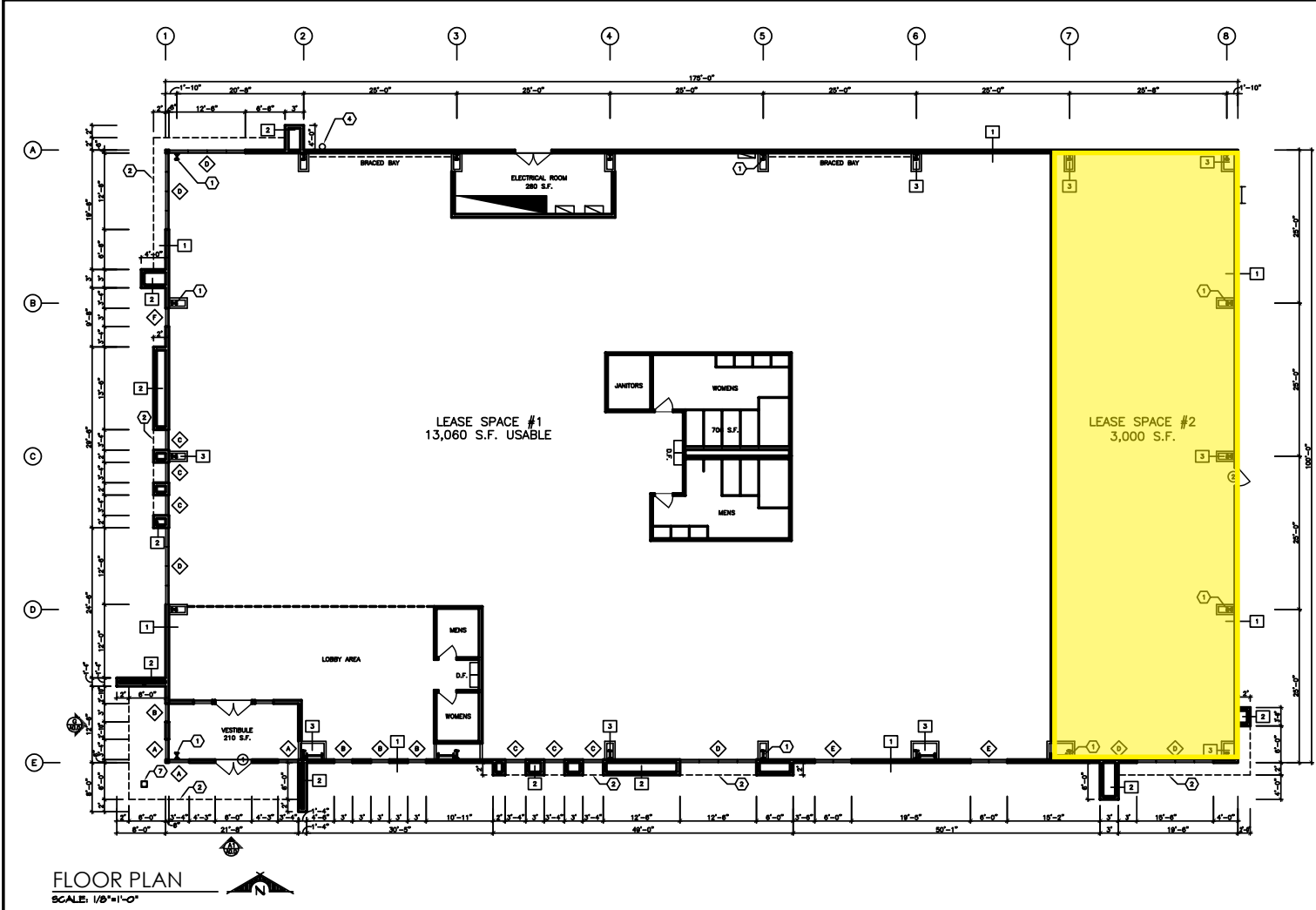
Rob Bloom, VP | 858) 405-5342 | Rob@duhscommercial.com
DRE# 01302163



No warranty or representation is made to the accuracy of the foregoing information. Terms of sale or lease and availability are subject to change or withdrawal without notice.

Floor Plan

IMPERIAL OFFICE SPACE
2406 Marshall Ave, Imperial, CA 92251



Rob Bloom, VP | 858) 405-5342 | Rob@duhscommercial.com
DRE# 01302163



No warranty or representation is made to the accuracy of the foregoing information. Terms of sale or lease and availability are subject to change or withdrawal without notice.

Aerial

IMPERIAL OFFICE SPACE

2406 Marshall Ave, Imperial, CA 92251



Rob Bloom, VP | 858) 405-5342 | Rob@duhscommercial.com
DRE# 01302163



No warranty or representation is made to the accuracy of the foregoing information. Terms of sale or lease and availability are subject to change or withdrawal without notice.

