

FOR LEASE

KIDDER.COM

# 350 ELEVENTH STREET

*A Stanley Saitowitz Designed Landmark Building  
Lease Opportunity ±25,000 Available Now  
Divisible to Single Floors*

## MOVE IN READY SPEC SUITES!

| FLOOR        | RSF        |
|--------------|------------|
| Ground Floor | ±6,250 RSF |
| 2nd Floor    | ±6,250 RSF |
| 3rd Floor    | ±6,250 RSF |
| 4th Floor    | LEASED     |

STANLEY SAITOWITZ | NATOMA ARCHITECTS INC.

**km** Kidder  
Mathews

# 350 ELEVENTH STREET

## PROPERTY FEATURES

±25,000 RSF stand-alone brand new building

Available now and move in ready

Fully customizable SoMa landmark headquarters

Highly efficient side core design with generous open floorplates

Ideal transit friendly centralized location

Floor to ceiling glass windows on all four floors

Brand new flooring, lighting, and kitchenette on each floor

Soaring ceiling heights with minimal columns

Modern metal security gate

Highly responsive local, experienced ownership

## AVAILABILITIES

| FLOOR        | RSF        | ASKING RATE |
|--------------|------------|-------------|
| Ground Floor | ±6,250 RSF | \$48 IG     |
| 2nd Floor    | ±6,250 RSF | \$48 IG     |
| 3rd Floor    | ±6,250 RSF | \$55 IG     |
| 4th Floor    | ±6,250 RSF | LEASED      |

**EVAN HOUSEL**  
415.948.3729  
evan.housel@kidder.com  
LIC N° 01882475

**KEVIN PON**  
415.577.2796  
kevin.pon@kidder.com  
LIC N° 02227662



350 ELEVENTH STREET



AVAILABLE FOR LEASE

KIDDER MATHEWS

350 ELEVENTH STREET



AVAILABLE FOR LEASE

KIDDER MATHEWS

350 ELEVENTH STREET



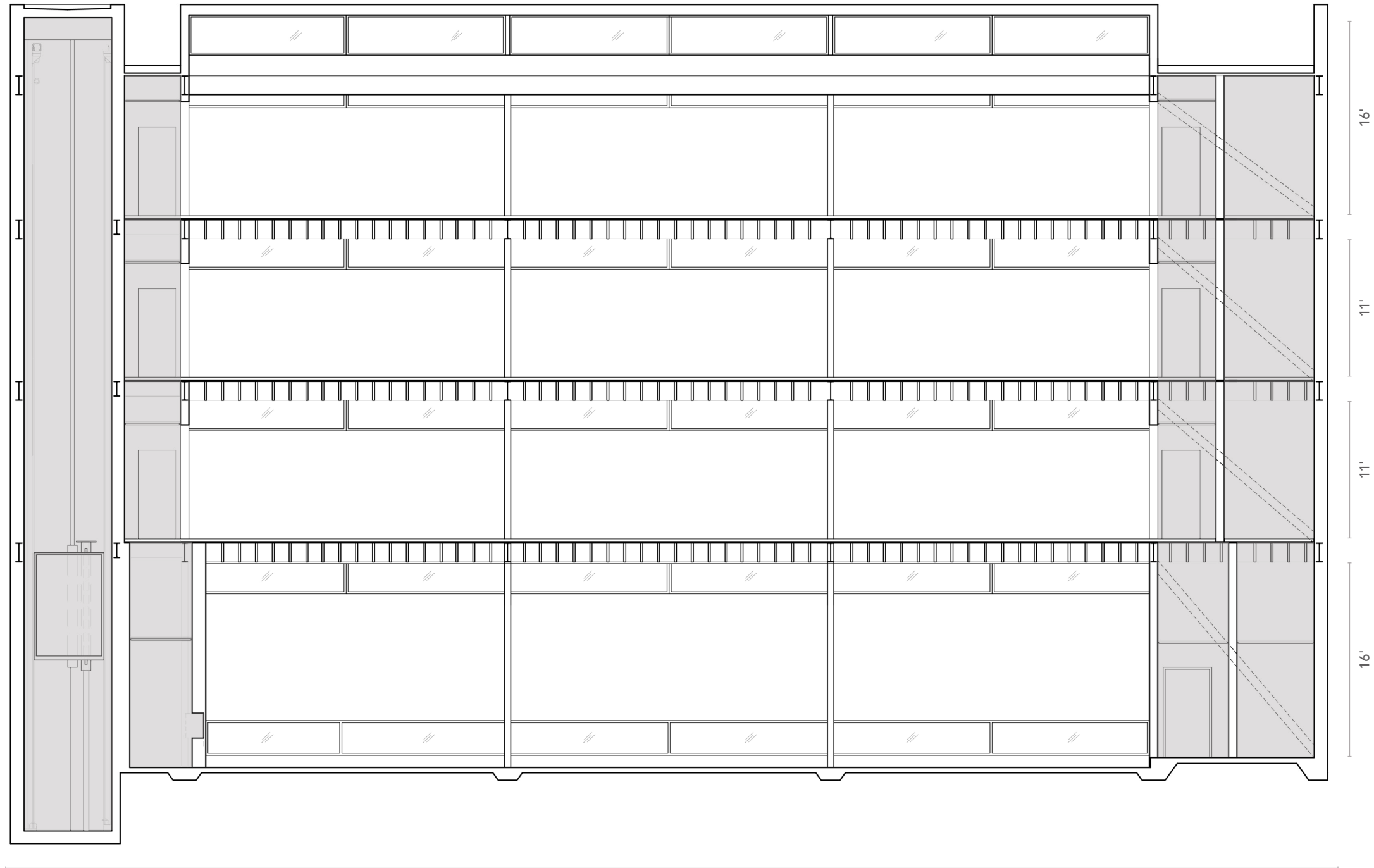
AVAILABLE FOR LEASE

KIDDER MATHEWS

# FRONT ELEVATION PLAN

*±25,000 RSF*  
TOTAL AVAILABLE

*NOW*  
AVAILABLE

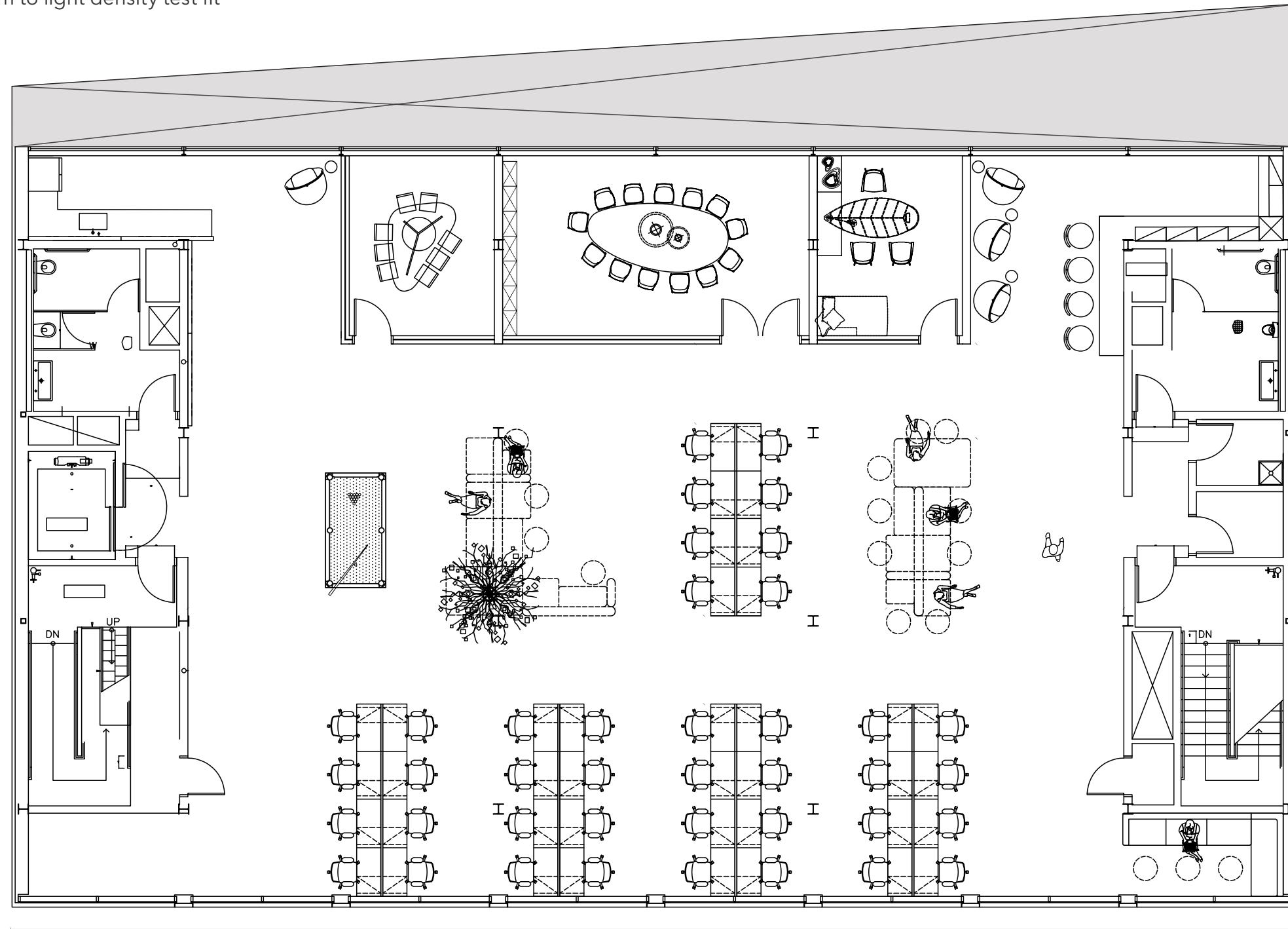


Eleventh Street

PLAN NOT TO SCALE

# OFFICE FLOOR PLAN

Medium to light density test fit



Eleventh Street

**±6,250 RSF**  
AVAILABLE PER FLOOR

**2ND, 3RD, & 4TH**  
FLOOR

**NOW**  
AVAILABLE

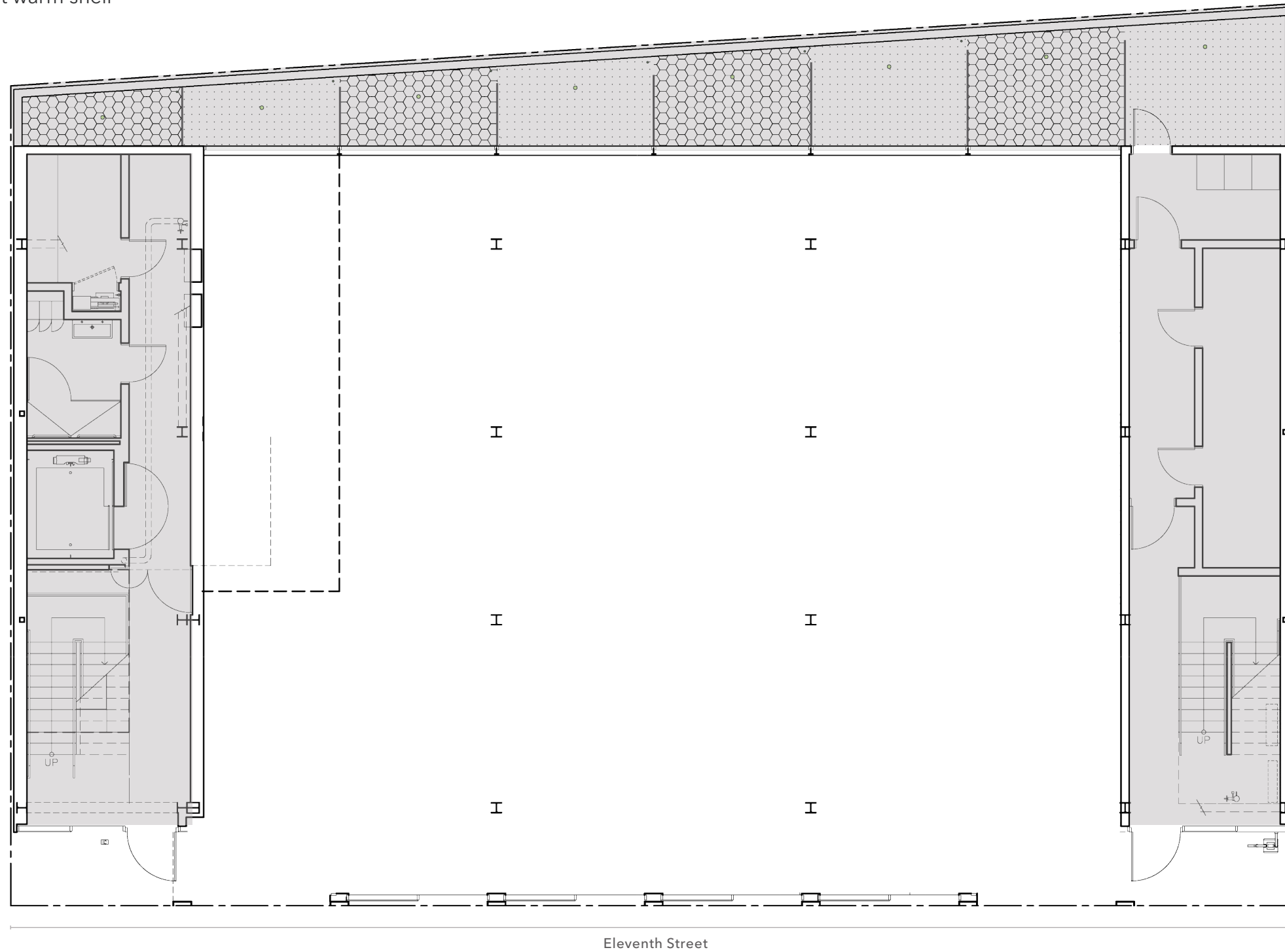
| FLOOR     | RSF        | ASKING RATE |
|-----------|------------|-------------|
| 2nd Floor | ±6,250 RSF | \$48 IG     |
| 3rd Floor | ±6,250 RSF | \$55 IG     |

- Floor to ceiling glass windows
- 40 to 65 full sized desks per floor
- 8 hotelling desks
- 3 conference rooms
- 4 phone rooms
- 4 one-on-one meeting booths
- 2 multi-stall restrooms
- Multiple soft seating areas
- Open kitchen/cafe area

FLOOR PLAN NOT TO SCALE

# GROUND FLOOR PLAN

As built warm shell

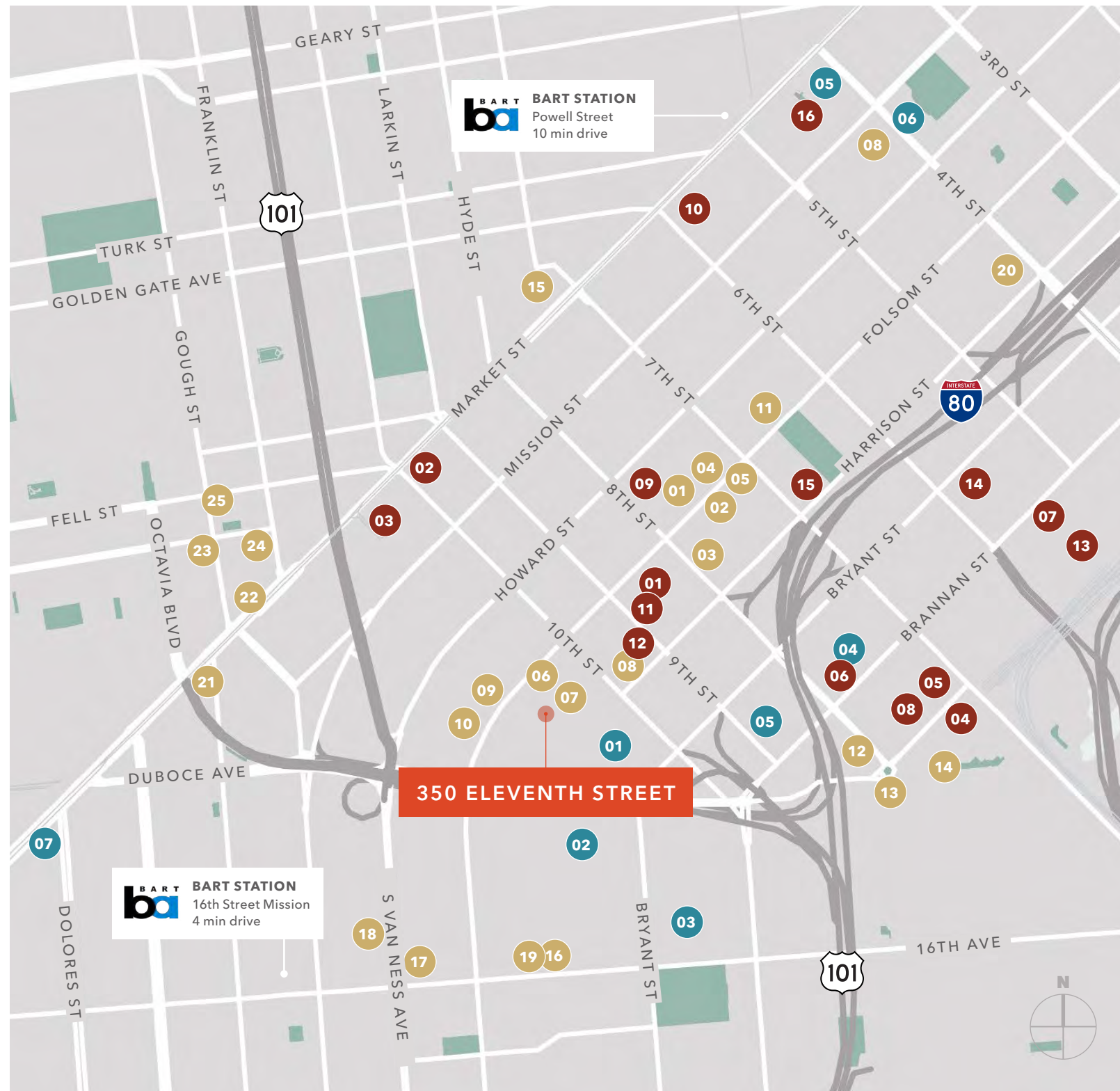


*±6,250 RSF*  
AVAILABLE PER FLOOR

*\$48 IG*  
LEASE RATE (PSF/YR)

*NOW*  
AVAILABLE

Floor to ceiling glass windows  
Turn key TI available



**FOOD & DRINK**

- 01 Bay of Burma
- 02 Basil Thai
- 03 Ushi Taro Ramen
- 04 HK Lounge Bistro
- 05 The Stud
- 06 Basil Canteen
- 07 Californios
- 08 Lone Star Saloon
- 09 The Willows
- 10 Manora's Thai Cuisine
- 11 Deli Board
- 12 Hardwood Bar & Smokery
- 13 Niku Steakhouse
- 14 Dumpling Time
- 15 Arsicault Bakery
- 16 Dandelion Chocolate
- 17 Poc-Chuc Restaurant
- 18 Jilli SD
- 19 Jolene's Bar and Restaurant
- 20 Delah Coffee
- 21 Martuni's
- 22 Zuni Cafe
- 23 Rich Table
- 24 RT Rotisserie
- 25 Dumpling Home

**TECH/INNOVATION COMPANIES**

- 01 Skycatch
- 02 Dolby Laboratories
- 03 Weebly, Inc
- 04 Adobe
- 05 Patreon
- 06 Airbnb HQ
- 07 Pinterest
- 08 Zynga
- 09 Google Fiber Webpass
- 10 GetProven
- 11 Arc Technologies
- 12 Watershed Technology Inc
- 13 Wispr Flow
- 14 Yambla
- 15 Plaid HQ
- 16 Medical AI, Inc
- 17 Mann Consulting

**RETAIL**

- 01 Costco
- 02 Best Buy
- 03 Safeway
- 04 REI
- 05 Trader Joe's
- 06 Matreon
- 07 Whole Foods



*Exclusively listed by*

**EVAN HOUSEL**  
415.948.3729  
evan.housel@kidder.com  
LIC N° 01882475

**KEVIN PON**  
415.577.2796  
kevin.pon@kidder.com  
LIC N° 02227662

**KIDDER.COM**