

MIDWOOD, BROOKLYN NY

2250 59TH STREET



SPACE DETAILS

LOCATION

Between Bay Parkway and 23rd Avenue

SPACE

Ground Floor: 5,800 SF

CEILING HEIGHT

12 Feet

POSSESSION

Immediate

ASKING RENT

Upon Request

NEIGHBORS

Dunkin', Popeyes, Midnight Bleu, World Spa, Viva La Dough, Moisha's Supermarket, National Wholesale Liquidators, Rainbow Lighting

TRANSPORTATION



COMMENTS

- Retail Space at the Base of a Luxury Office Building
- Excellent Condition
- Glass Frontage
- High Ceilings
- HVAC in Place
- Restrooms in Place
- All Uses Considered

CONTACTS

MEYER DAGMY

718-249-3613

m@modcre.com

EDDIE MAMIYE

917-379-6719

e@modcre.com

ISAAC BIJOU

718-594-6377

ib@modcre.com



2774 CONEY ISLAND AVE, BROOKLYN, NY 11235

©2026MODCommercialRealtyLLC.Allinformationprovidedis deemed reliable, but is not guaranteed and should be independently verified.

EXTERIOR IMAGE



CONTACTS

MEYER DAGMY

718-249-3613

m@modcre.com

EDDIE MAMIYE

917-379-6719

e@modcre.com

ISAAC BIJOU

718-594-6377

ib@modcre.com



2774 CONEY ISLAND AVE, BROOKLYN, NY 11235

©2026MODCommercialRealtyLLC.Allinformationprovidedis deemed reliable, but is not guaranteed and should be independently verified.

INTERIOR IMAGES



CONTACTS

MEYER DAGMY

718-249-3613

m@modcre.com

EDDIE MAMIYE

917-379-6719

e@modcre.com

ISAAC BIJOU

718-594-6377

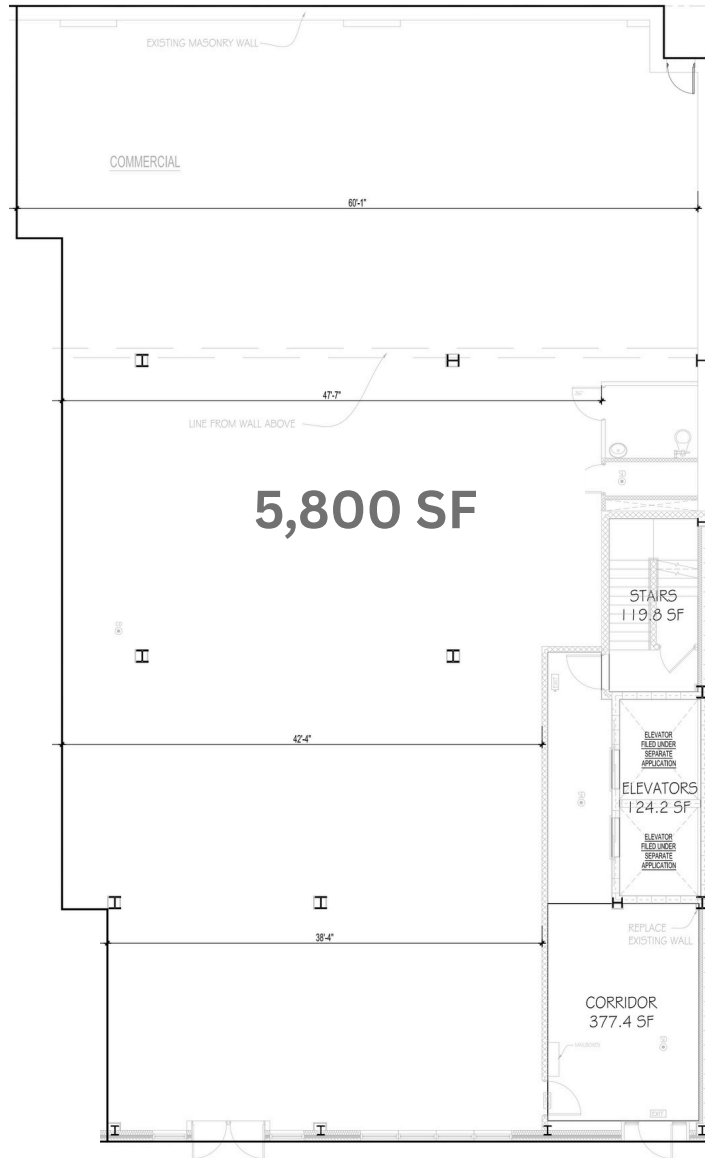
ib@modcre.com

2774 CONEY ISLAND AVE, BROOKLYN, NY 11235

©2026MODCommercialRealtyLLC.Allinformationprovidedis deemed reliable, but is not guaranteed and should be independently verified.



FLOOR PLAN



CONTACTS

MEYER DAGMY

718-249-3613

m@modcre.com

EDDIE MAMIYE

917-379-6719

e@modcre.com

ISAAC BIJOU

718-594-6377

ib@modcre.com



2774 CONEY ISLAND AVE, BROOKLYN, NY 11235

©2026MODCommercialRealtyLLC.Allinformationprovidedis deemed reliable, but is not guaranteed and should be independently verified.

AREA MAP



CONTACTS

MEYER DAGMY

718-249-3613

m@modcre.com

EDDIE MAMIYE

917-379-6719

e@modcre.com

ISAAC BIJOU

718-594-6377

ib@modcre.com



2774 CONEY ISLAND AVE, BROOKLYN, NY 11235

©2026MODCommercialRealtyLLC.Allinformationprovidedis deemed reliable, but is not guaranteed and should be independently verified.