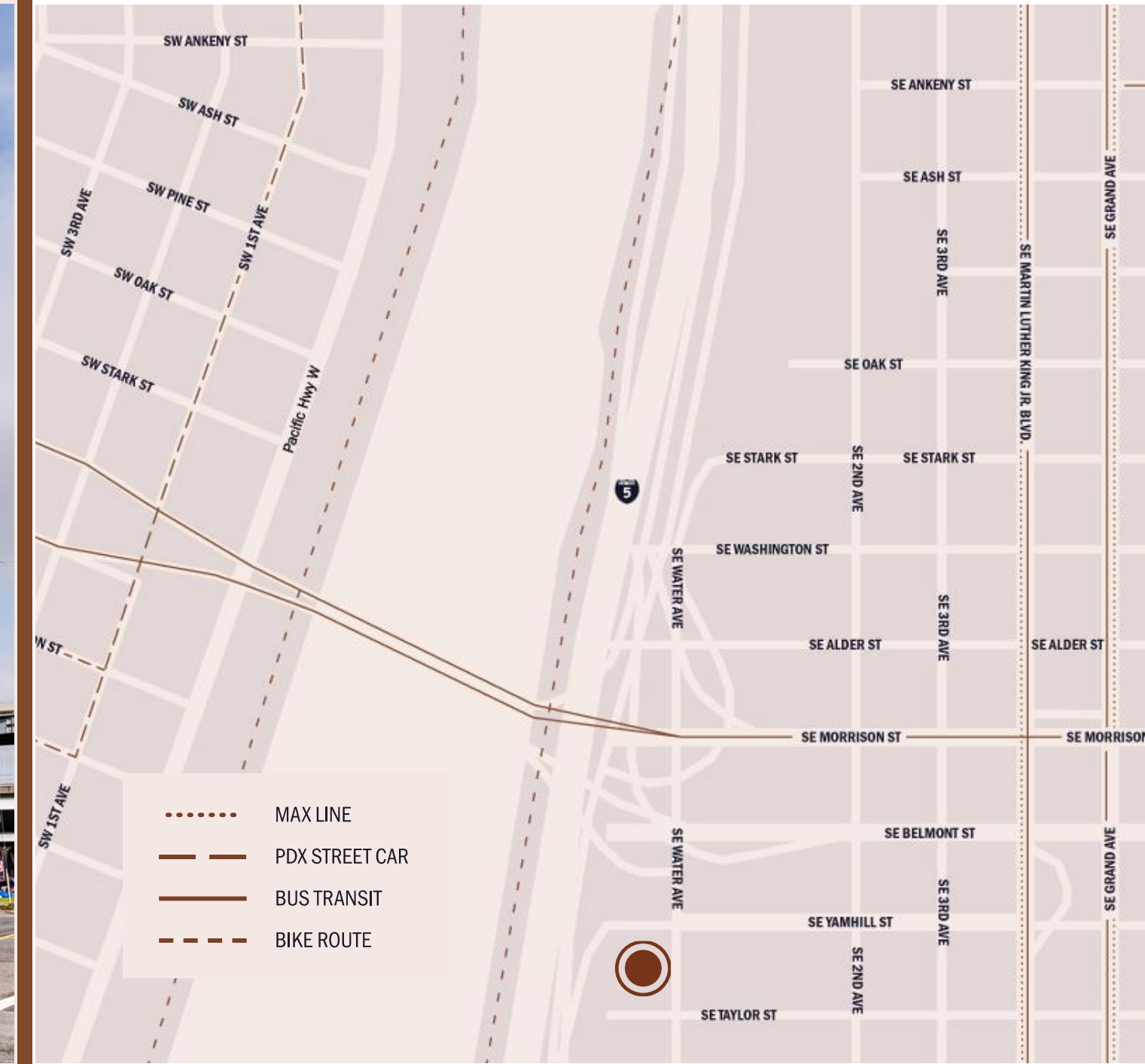


# Smart, Flexible, Creative Office in the Central Eastside

EASTBANK COMMERCE CENTER  
SUITE 350



BEAM



# Eastbank Commerce Suite 350

2,608 RSF

\$15.00/RSF/NNN



## BUILDING FEATURES

Home to many creative companies and the clarklewis restaurant, the Eastbank Commerce Center (“EBCC”) is located in the Central Eastside, just across the street from other local favorites: Bunk Bar, Boke Bowl, Water Avenue Coffee, and Shalom Y’All. The Eastbank Commerce Center is easily accessible from the I-5, I-405, Morrison Bridge, Water Avenue ramp, and the Portland Streetcar line.

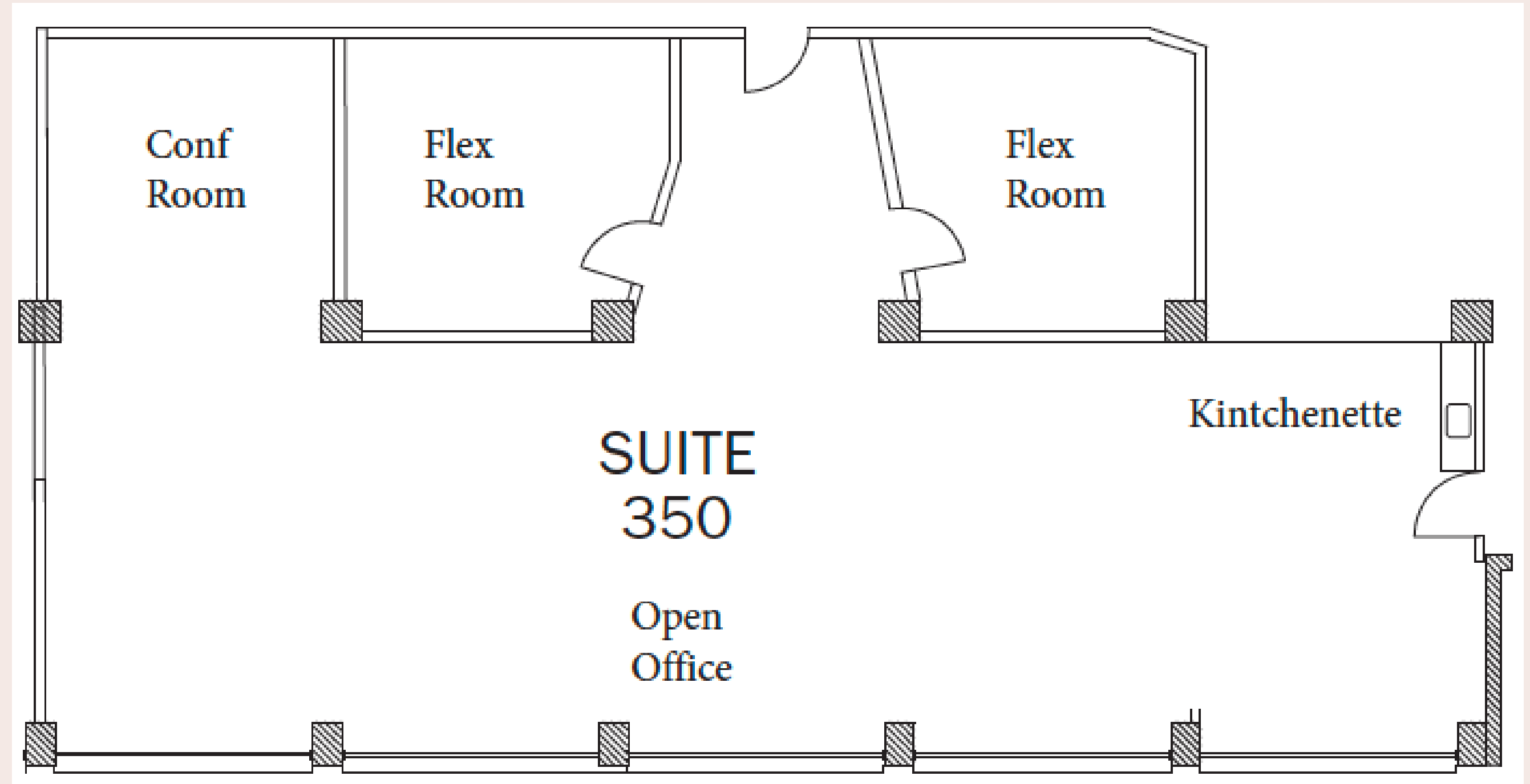
- Outstanding downtown views
- Newly renovated lobby with powered work counter
- Newly renovated restrooms and showers
- Pet-friendly building
- Secure indoor bike parking
- On-site parking and storage available for an additional charge

# Eastbank Commerce Suite 350

## ABOUT THE SPACE

This flexible suite on the third floor of the Eastbank Commerce Center (EBCC). Surrounded by natural light and breathtaking views of downtown Portland and the Central Eastside. The concrete floors and towering ceilings are a nod to the building's 1925 heritage, while the updated kitchen and dynamic blend of open workspace and private meeting rooms offer modern amenities.

Experience the perfect balance of vintage charm and contemporary comfort in this inspiring space.





A



B

A Light and bright workspace with polished concrete floors

B Newly renovated building lobby

C Kitchenette with dishwasher



C



# Beam Development.

## Working to activate the potential of the Central Eastside for over 20 years.

Beam Development is a real estate development and management company located in Portland, Oregon.

Over the past two decades, Beam's development activities have been guided by a few core principles: invest for the long-term in central city neighborhoods, champion smart and inspiring design, and build meaningful connections across our work. Located primarily in Portland's Central Eastside, Beam's development portfolio includes 1,000,000 SF of completed projects.

Beam is proud of its track record of partnering with tenants to support their success. We look forward to hearing your story and seeing how great workspace can help write the next chapter.

## For leasing information contact:

### LEASING TEAM

503-542-8420

[leasing@beamdevelopment.com](mailto:leasing@beamdevelopment.com)

