

FOR LEASE

UP TO 8,540 SF  
RETAIL AVAILABLE

1071-1119 FORT STREET  
LINCOLN PARK, MI



**AVAILABLE:**

Unit 1093: UP TO 6,540 SF  
Unit 1093A: 2,000 SF

**USES:**

Retail

**LEASE RATE:**

\$9.50/SF/YR, NNN

**JOIN TENANTS:**

Dollar General, Rent-A-Center, Mr. Fish & Chicken,  
Dr. Elem, and Hair/Nail Salon.

**LOCATION:**

Located on Fort Street between Southfield Rd & Outer Dr.

**SUMMARY:**

Completely renovated - New roof, new hvac, new façade, new lights and much more. Park Place Shopping Center is a 29,000+ sf retail plaza on heavily traveled Fort Street. Building features 12 foot ceilings, ample parking, and signage. Great demographics in a highly dense populated Downriver area. Easy access via I-75 & I-94. Unit 1093A is a wide open space with restroom in the back.

**FORWARD COMMERCIAL GROUP**  
240 MARTIN ST, STE 200  
BIRMINGHAM, MI 48009  
[www.forwardcommercial.com](http://www.forwardcommercial.com)

**Emil Cherkasov**  
Principal Broker  
248.662.5066 Office  
[emil@forwardcommercial.com](mailto:emil@forwardcommercial.com)



# OVERVIEW

1071-1119 FORT STREET  
RETAIL SPACE  
AVAILABLE

DEMOGRAPHICS	1 MILE	3 MILE	5 MILE
POPULATION	17,556	109,754	249,450
HOUSEHOLDS	6,963	43,479	97,250
AVERAGE HH INCOME	\$47,642	\$63,658	\$68,488

TRAFFIC COUNTS	24,610 / DAILY
----------------	----------------



**FORWARD COMMERCIAL GROUP**  
240 MARTIN ST, STE 200  
BIRMINGHAM, MI 48009  
[www.forwardcommercial.com](http://www.forwardcommercial.com)

**Emil Cherkasov**  
Principal Broker  
248.662.5066 Office  
[emil@forwardcommercial.com](mailto:emil@forwardcommercial.com)



# PROPERTY PHOTOS

1071-1119 FORT STREET

UP TO 8,540 SF

RETAIL AVAILABLE



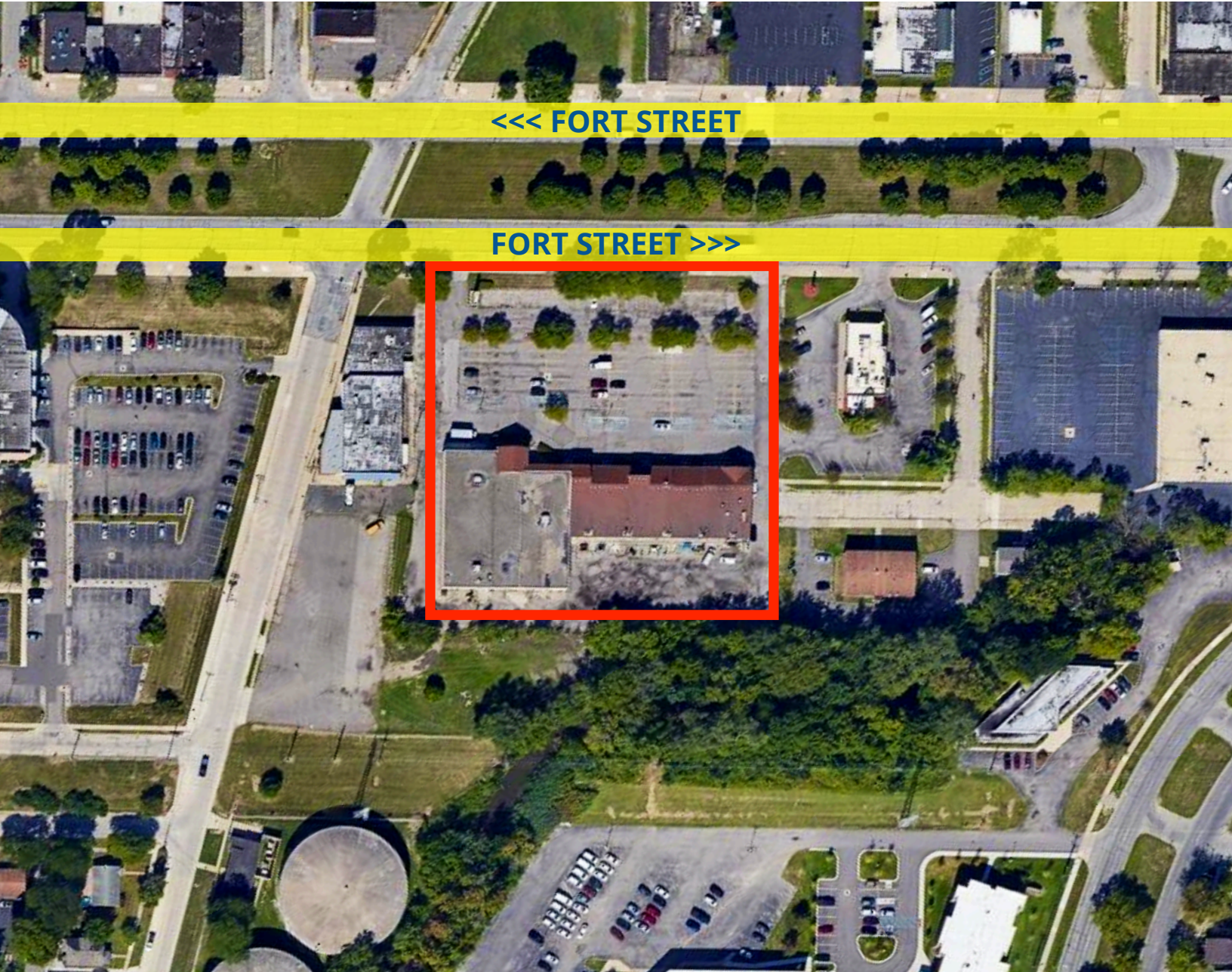
FORWARD COMMERCIAL GROUP  
240 MARTIN ST, STE 200  
BIRMINGHAM, MI 48009  
[www.forwardcommercial.com](http://www.forwardcommercial.com)

**Emil Cherkasov**  
Principal Broker  
248.662.5066 Office  
[emil@forwardcommercial.com](mailto:emil@forwardcommercial.com)



# AERIAL VIEW

1071-1119 FORT STREET  
RETAIL SPACE  
AVAILABLE



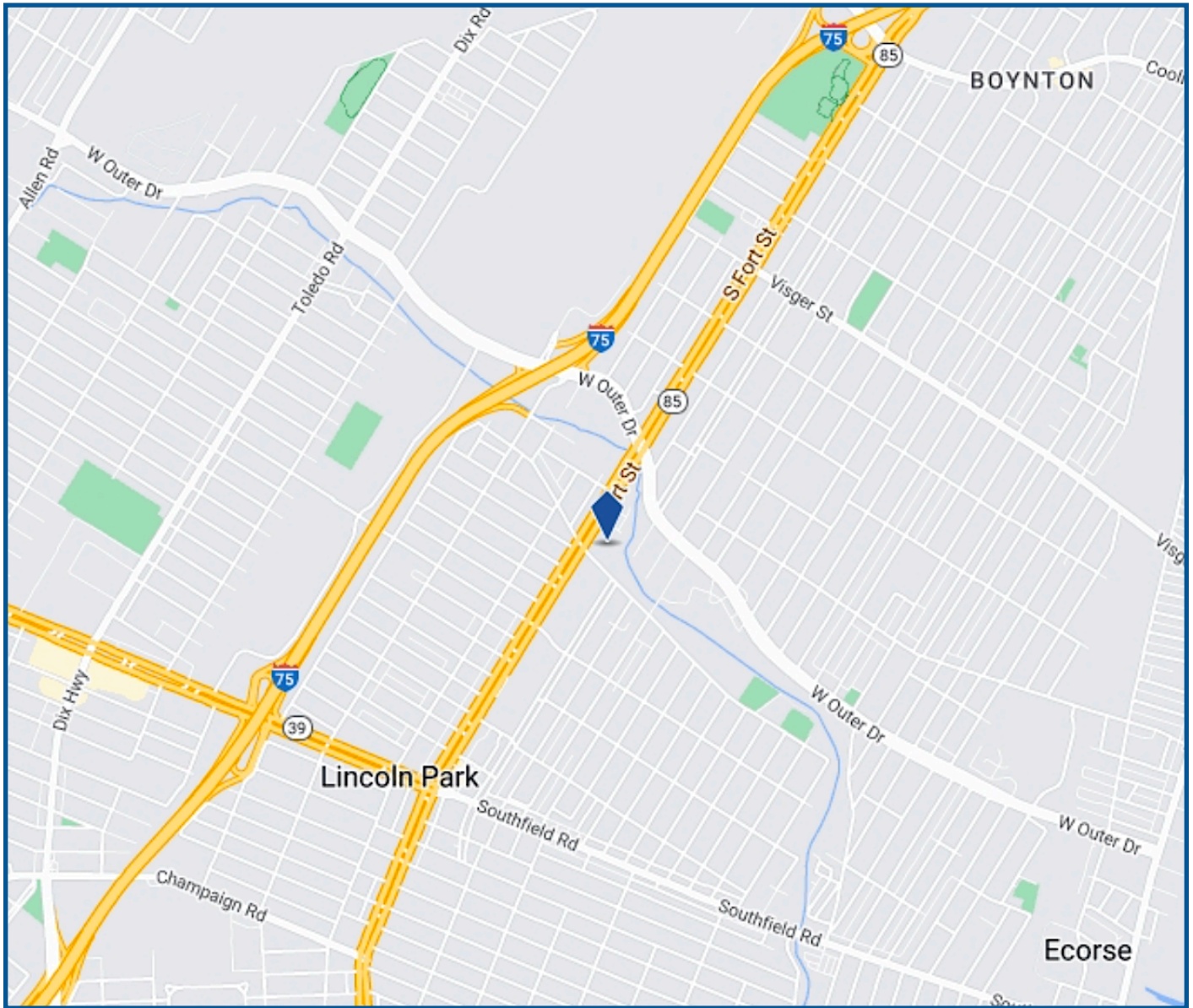
**FORWARD COMMERCIAL GROUP**  
240 MARTIN ST, STE 200  
BIRMINGHAM, MI 48009  
[www.forwardcommercial.com](http://www.forwardcommercial.com)

**Emil Cherkasov**  
Principal Broker  
248.662.5066 Office  
[emil@forwardcommercial.com](mailto:emil@forwardcommercial.com)



# STREET MAP

1071-1119 FORT STREET  
HIGH-DENSITY  
DOWNRIVER AREA



**FORWARD COMMERCIAL GROUP**  
240 MARTIN ST, STE 200  
BIRMINGHAM, MI 48009  
[www.forwardcommercial.com](http://www.forwardcommercial.com)

**Emil Cherkasov**  
Principal Broker  
248.662.5066 Office  
[emil@forwardcommercial.com](mailto:emil@forwardcommercial.com)

