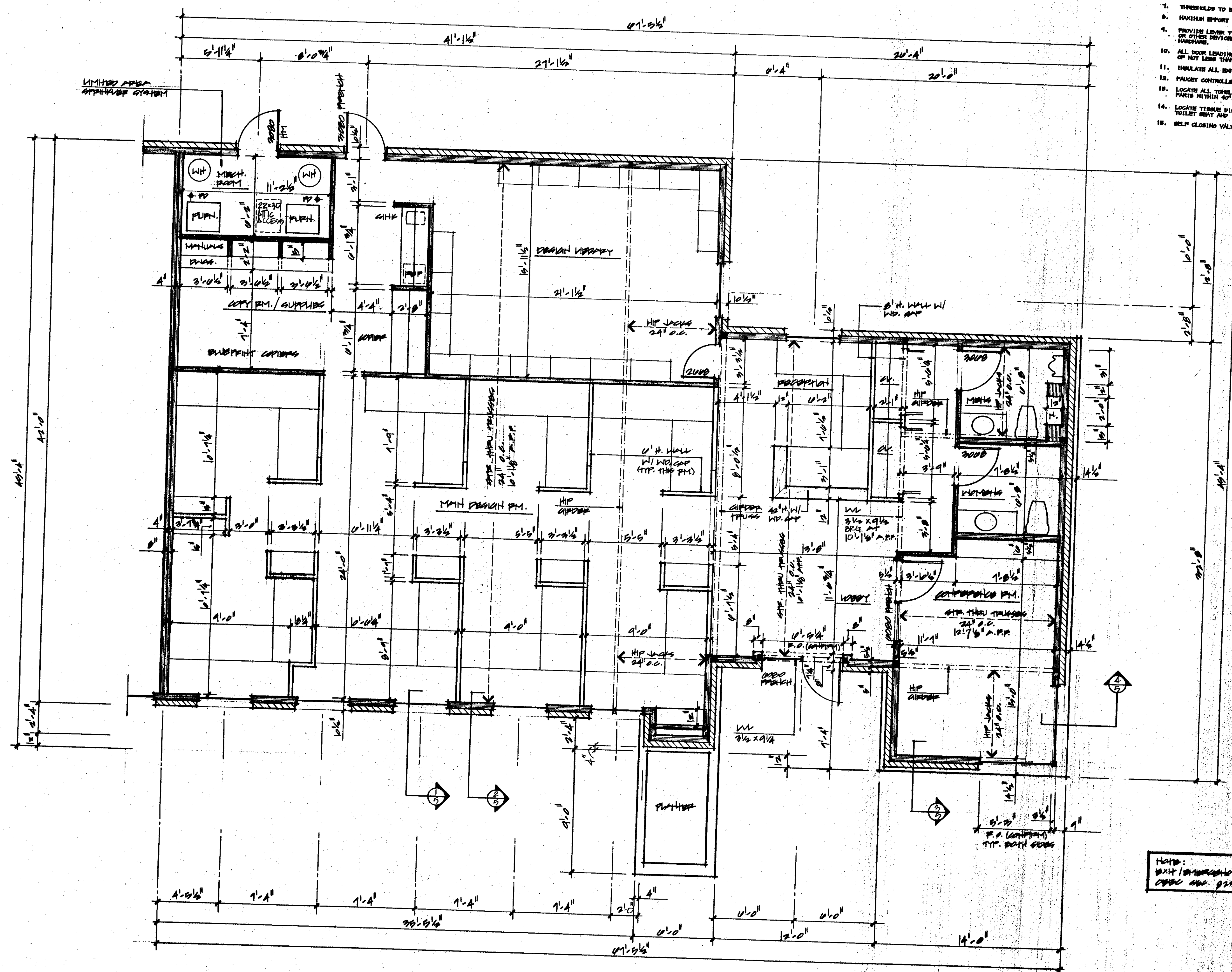


ACCESSIBILITY NOTES

1. ACCESS TO THIS FACILITY SHALL BE PROVIDED AT THE PRIMARY ENTRANCE.
2. THE SLOPE OF ANY PUBLIC WALK SHALL NOT EXCEED A MAX. CROSS SLOPE OF 2%.
3. PROVIDE A 60" X 60" LANDING ON THE STRIKE SIDE OF DOOR W/ 44" MIN. WIDTH IN THE DIRECTION OF TRAVEL.
4. THE SLOPE OF ANY RAMP SHALL NOT EXCEED 1" TO 16" VAD.
5. ALL RAMP SURFACES SHALL HAVE A NON-SLIP SURFACE.
6. ALL RAMP SURFACES SHALL BE A MIN. OF 48" IN WIDTH.
7. THRESHOLDS TO BE A MAX. OF 1/4" ABOVE THE ADJACENT FINISHED FLOOR.
8. MAXIMUM EFFORT TO OPERATE ANY DOOR SHALL NOT EXCEED 5 LBS.
9. PROVIDE LEVER TYPE HANDLINGS, PULL OR PUSH FULL ACTIVATED HANDBARS OR OTHER DEVICES THAT ARE DELIVERED TO OPEN WITHOUT GRIPPING THE HANDWARE.
10. ALL DOOR LEADING TO SANITARY FACILITIES ARE TO HAVE A NET CLEAR OPENING OF NOT LESS THAN 32".
11. INSULATE ALL EXPOSED HOT WATER LINES IN THE SANITARY FACILITIES.
12. PUSHER CONTROLS SHALL BE LEVER TYPE W/ MAX. OPERATING FORCE OF 5 LBS.
13. LOCATE ALL TOYS, SANITARY WIPING, AND WASTE RECEPTACLES W/ ALL OPERATING TOILET SEAT AND 14" A.P.F.
14. LOCATE TISSUE DISPENSERS ON THE WALL WITHIN 12" OF THE FRONT EDGE OF THE TOILET SEAT AND 14" A.P.F.
15. SELF CLOSING VALVES TO REMAIN OPEN FOR A MIN OF 10 SECONDS.

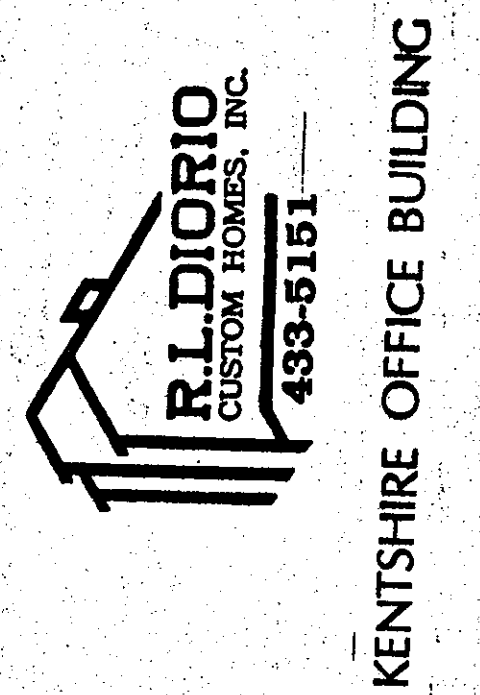


FLOOR PLAN UNIT "B"
SCALE: 1/4"=1'-0"

Notes:
EXIT SIGN/STAIRWAY LIGHTING PER
CODE SEC. 929.0 & 929.0



ARCHITREND ASSOCIATES
ARCHITECTS
2621 DRYDEN ROAD
SUITE 1112
DAYTON OH 45439
513 296 0800



R.L. DIORIO
CUSTOM HOMES, INC.
433-5151
KENTSHIRE OFFICE BUILDING

PROJECT
Kentshire
Office Building
Kentshire, OH

© 1994 ARCHITREND ASSOCIATES, INC. ALL RIGHTS RESERVED. THE DRAWING AND DESIGN ARE THE PROPERTY OF ARCHITREND ASSOCIATES, INC. AND ARE PROVIDED SOLELY FOR USE BY THE OWNER FOR THE PROJECT LOCATION ONLY. THE REPRODUCTION OR USE OF THIS DRAWING AND DESIGN FOR ANY OTHER PROJECT IS PROHIBITED WITHOUT THE EXPRESS WRITTEN CONSENT OF ARCHITREND ASSOCIATES, INC.

DATE
11-11-94

REVISIONS

TITLE

Unit B - Product Room

PROJECT NO

0-462

DRAWING

A3