

9201 POLARIS DR

OKLAHOMA CITY, OKLAHOMA 73149

20,000 SF OF OAK HOLLOW
INDUSTRIAL PARK FOR LEASE



CBRE

20,000 SF

LEASE RATE: \$7.95/SF NNN

PROPERTY HIGHLIGHTS

Available Space	20,000± SF
Office	1,600± SF
Total Building Size	60,000± SF
Zoning	I-2 (Moderate Industrial)
Power	270/480 Volts, 3-Phase
Dock High Doors	Four (4) 9' x 10'
Clear Height	31'
Column-Spacing	50' x 50'
Truck-Court Depth	145'
Location	Immediate highway access to I-35 and I-240



PHOTOS



AERIAL



BOB MOORE®

BOB MOORE®

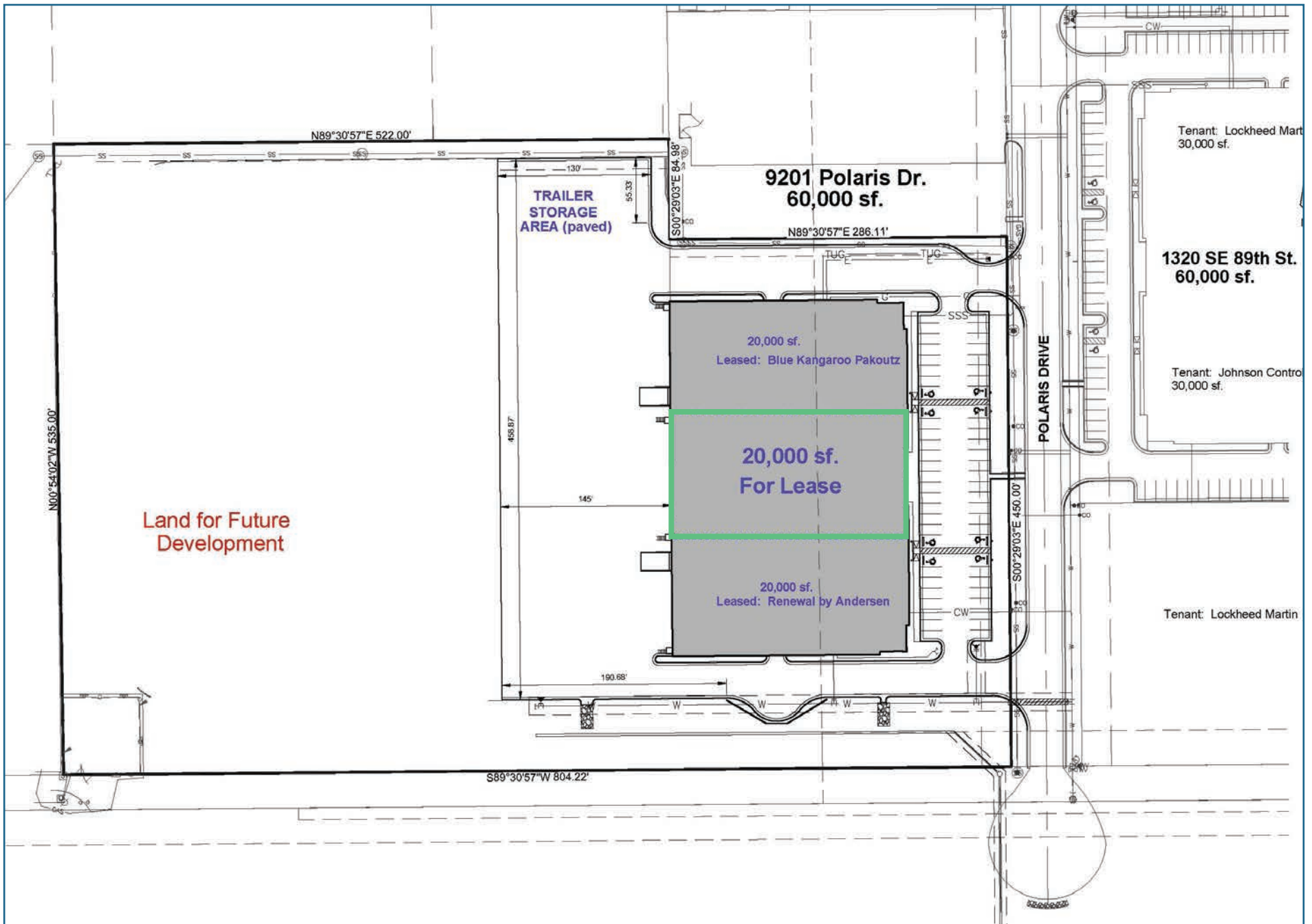
PENSKE



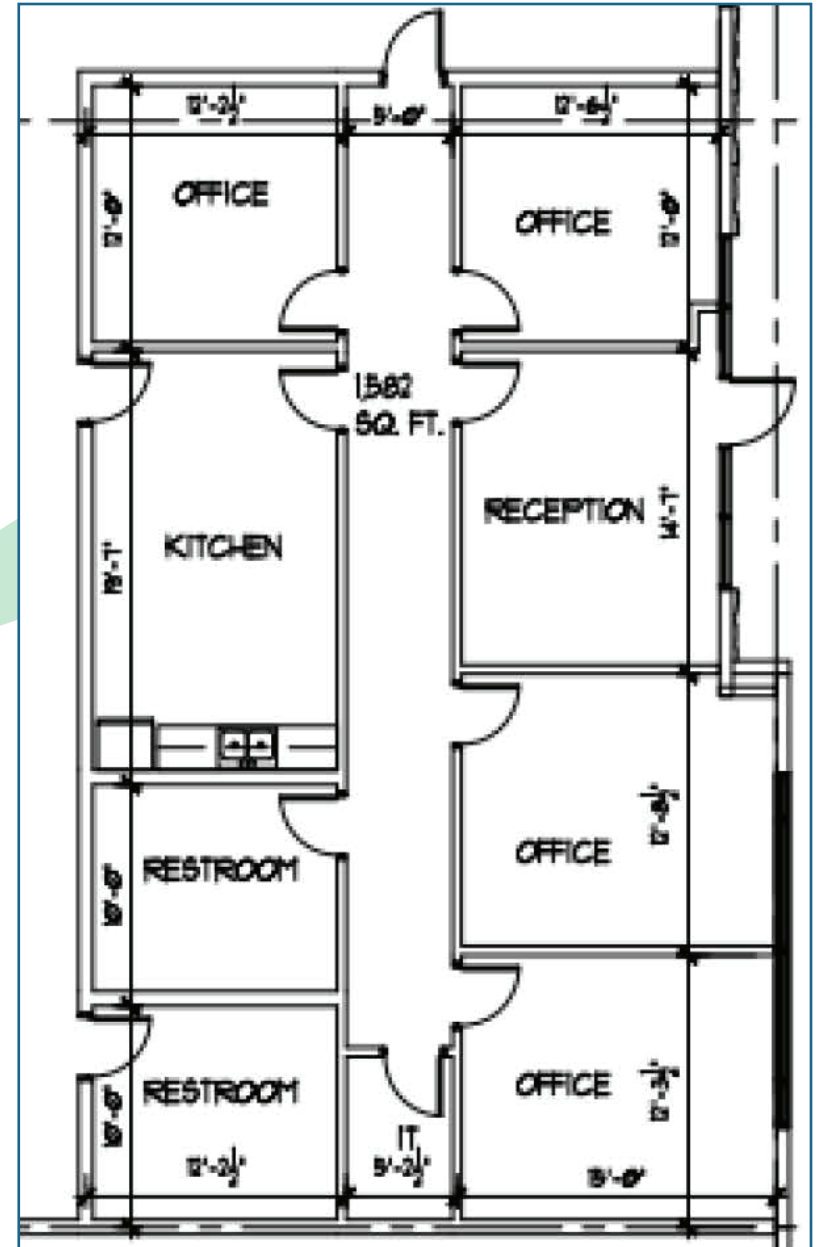
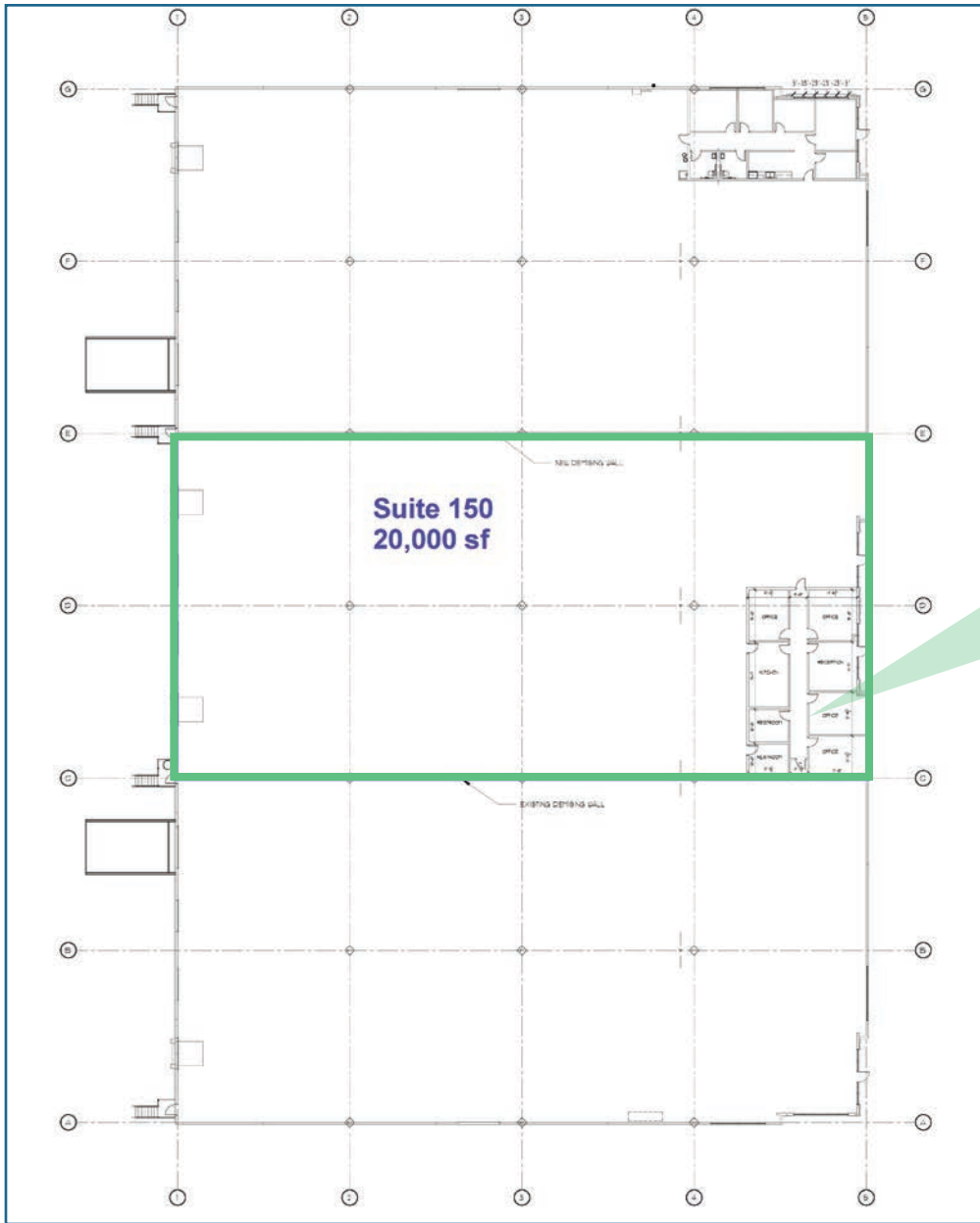
Polaris Drive



BOSCH



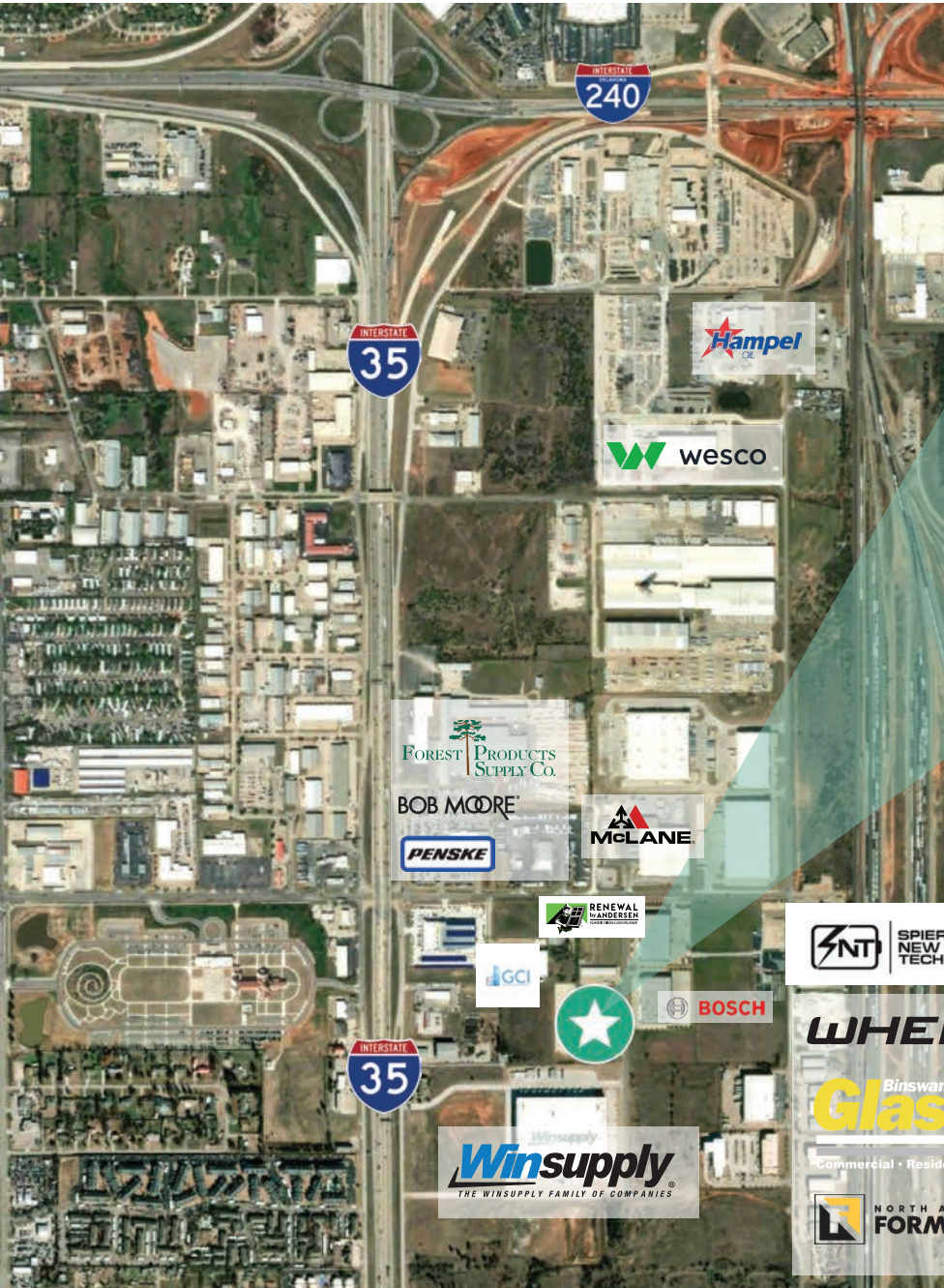
SITE PLAN



OFFICE SPACE FLOOR PLAN

FLOOR PLAN

VICINITY MAP



9201 POLARIS DR

OKLAHOMA CITY, OKLAHOMA 73149

20,000 SF

LEASE RATE: \$7.95/SF NNN



RANDY LACEY, SIOR

Senior Vice President

+1 405 607 6062

randy.lacey@cbre.com

CHRIS ZACH, SIOR, CPA

Vice President

+1 405 607 6313

chris.zach@cbre.com

© 2025 CBRE, Inc. All rights reserved. This information has been obtained from sources believed reliable but has not been verified for accuracy or completeness. CBRE, Inc. makes no guarantee, representation or warranty and accepts no responsibility or liability as to the accuracy, completeness, or reliability of the information contained herein. You should conduct a careful, independent investigation of the property and verify all information. Any reliance on this information is solely at your own risk. CBRE and the CBRE logo are service marks of CBRE, Inc. All other marks displayed on this document are the property of their respective owners, and the use of such marks does not imply any affiliation with or endorsement of CBRE. Photos herein are the property of their respective owners. Use of these images without the express written consent of the owner is prohibited.

CBRE