

For Sale

57+ Acres Available on Multiple Lots
Hwy 59 & CR 49 ■ Loxley, Alabama 36551



JOEY BETBEZE

JoeyBetbeze@BetbezeRealty.com

Cell (251) 554 8145

Office (251) 476 4111

OFFICE

3345 Halls Mill Road

Mobile, Alabama 36606

www.BetbezeRealty.com

The information above has been obtained from sources believed reliable. While we do not doubt its accuracy we have not verified it and make no guarantee, warranty or representation about it. It is your responsibility to independently confirm its accuracy and completeness. Any projections, opinions, assumptions, or estimates used are for example only and do not repre-sent the current or future performance of the property. The value of this transaction to you depends on tax and other factors which should be evaluated by your tax, financial, and legal advisors. You and your advisors should conduct a careful, independent investigation of the property to determine to your satisfaction the suitability of the property for your needs.

Multiple lots available in Loxley, Alabama, with frontage on Highway 59 and County Road 49. Ideal for distribution, light manufacturing, wholesale supply, service industries or retail uses.

LOCATION

State Hwy 59
Loxley, Alabama 36551

SIZE

57.19± Total Acres
41.06± Upland Acres
16.13± Wetland Acres

FRONT FEET

2,923± on Hwy 59
2,035± on CR 49

ZONING

M-1 Light Industrial

UTILITIES

Water & Sewer
Located on CR 49

TOTAL PRICE

\$5,728,000



SIZE

6.69± Total Acres
6.15± Upland Acres

FRONT FEET

680± on CR 49

PRICE

\$875,000



SIZE

3.66± Total Acres
1.86± Upland Acres

FRONT FEET

690± on CR 49

PRICE

\$285,000



SIZE

3.05± Total Acres
0.94± Upland Acres

FRONT FEET

240± on CR 49

PRICE

\$168,000



SIZE

43.79± Total Acres
11.68± Upland Acres

FRONT FEET

2924± on Hwy 59

PRICE

\$4,400,000





Baldwin Preparatory

Steelwood Resort

Amazon Distribution

Stonebridge

Loxley Logistics

Butting USA Site

Aldi Distribution

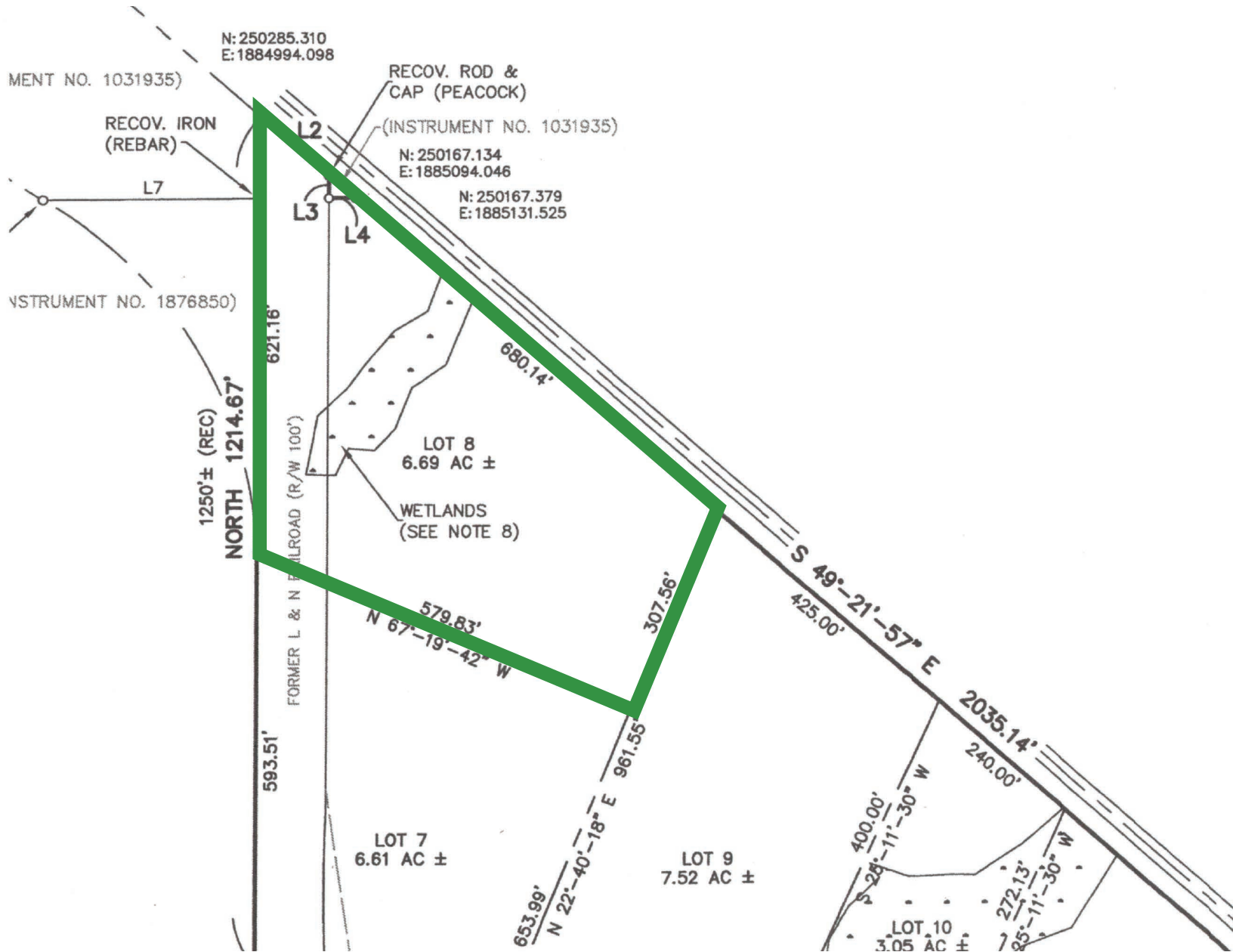
Keyport Warehousing

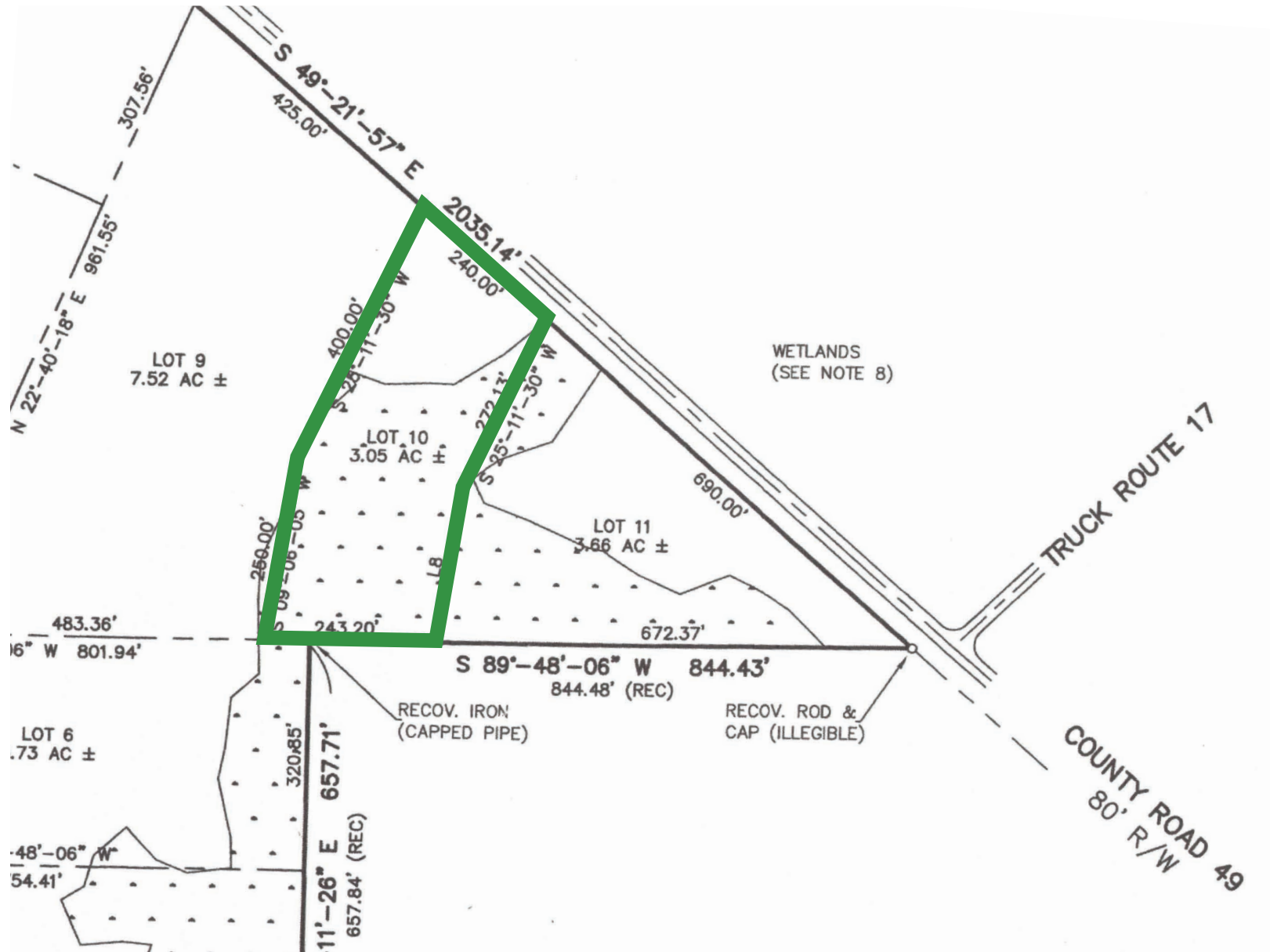
Ace Distribution

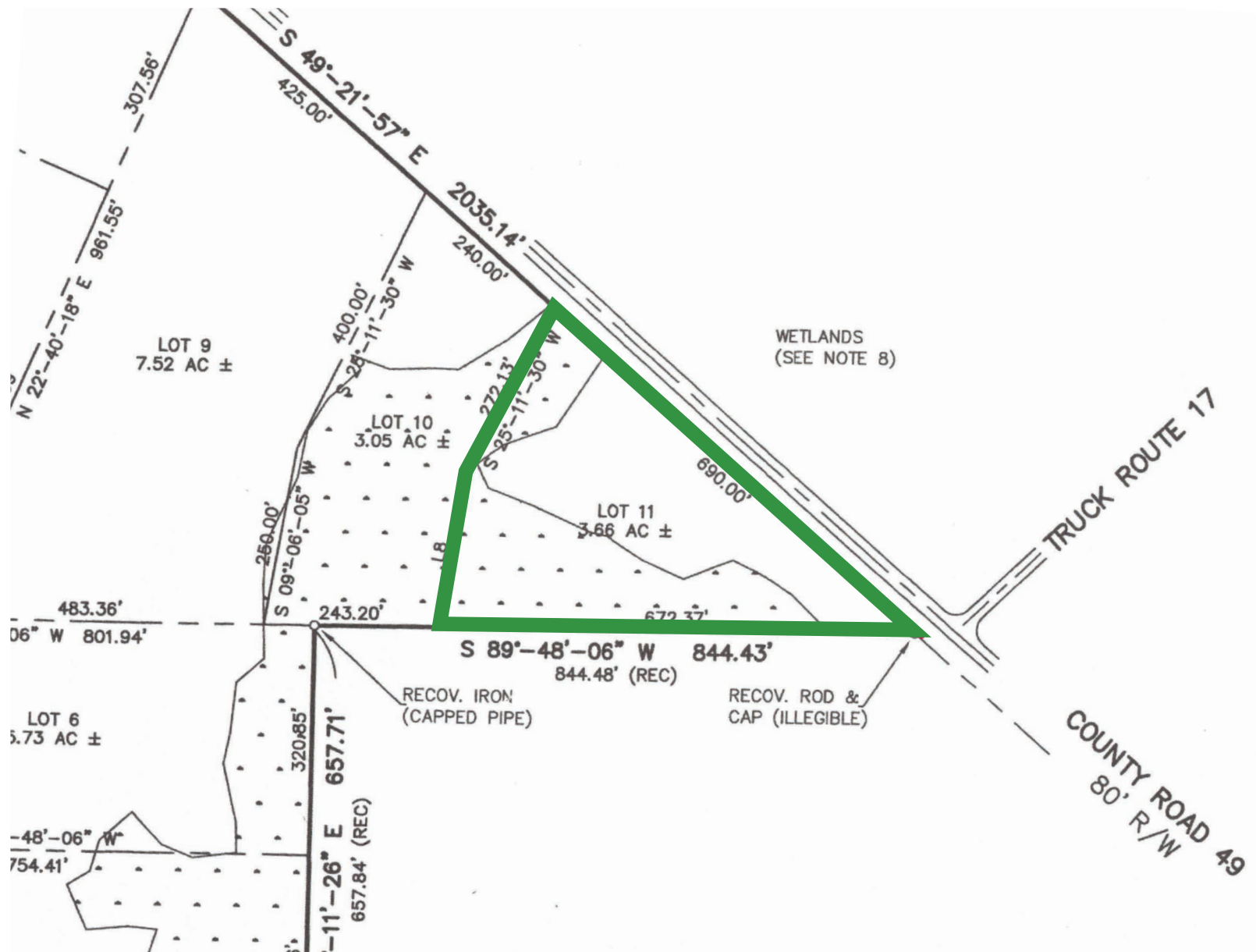
Gulf Coast Logistics

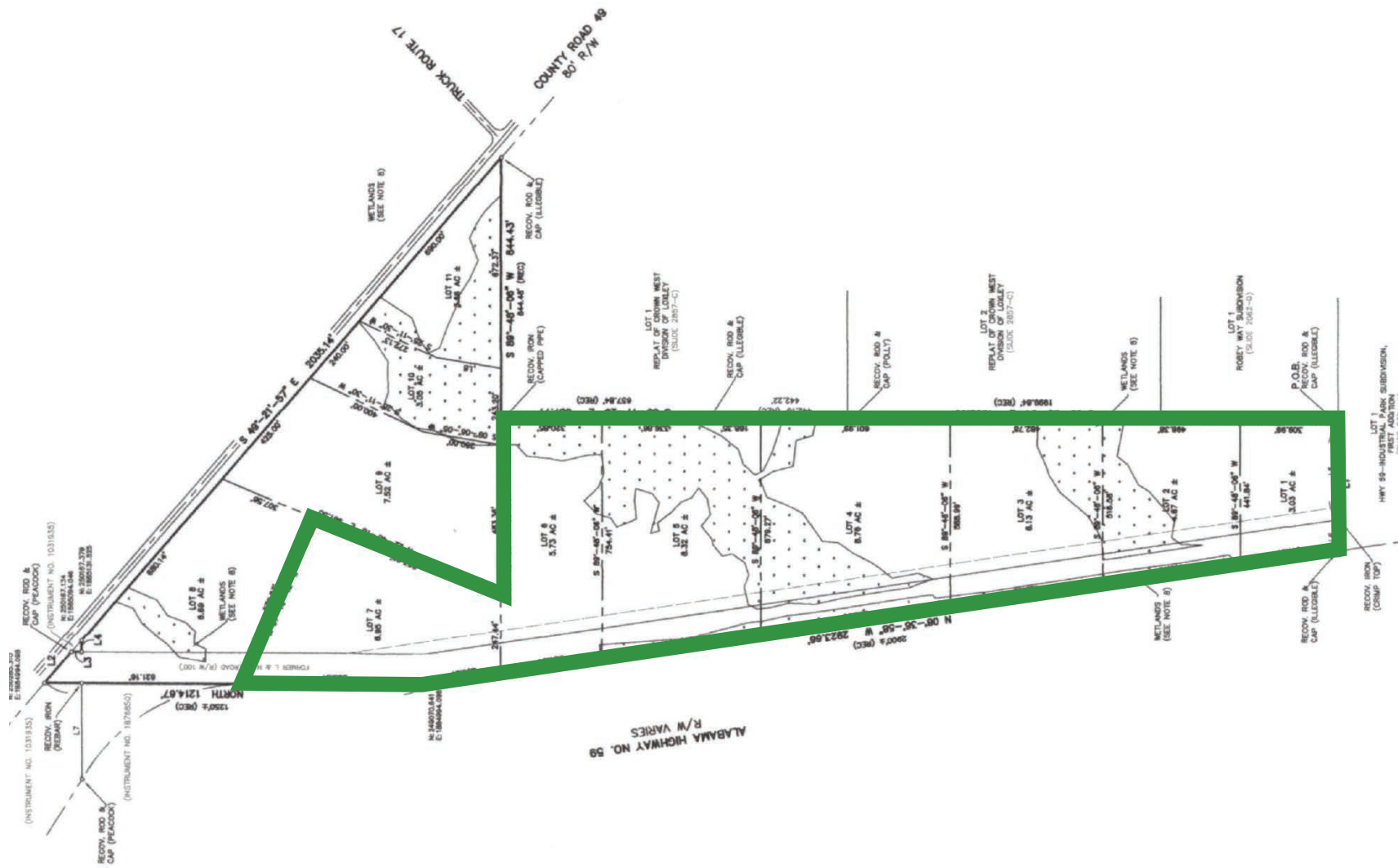
Port Alabama Logistics Park

Flowerwood Nursery









FOR SALE ▪ Multiple Lots Available ▪ HWY 59 & CR 49 ▪ Loxley, Alabama 36551