



MARKETING FLYER

650 KOMAS

UNIVERSITY OF UTAH RESEARCH PARK | SALT LAKE CITY, UT

SPENCER WIXOM

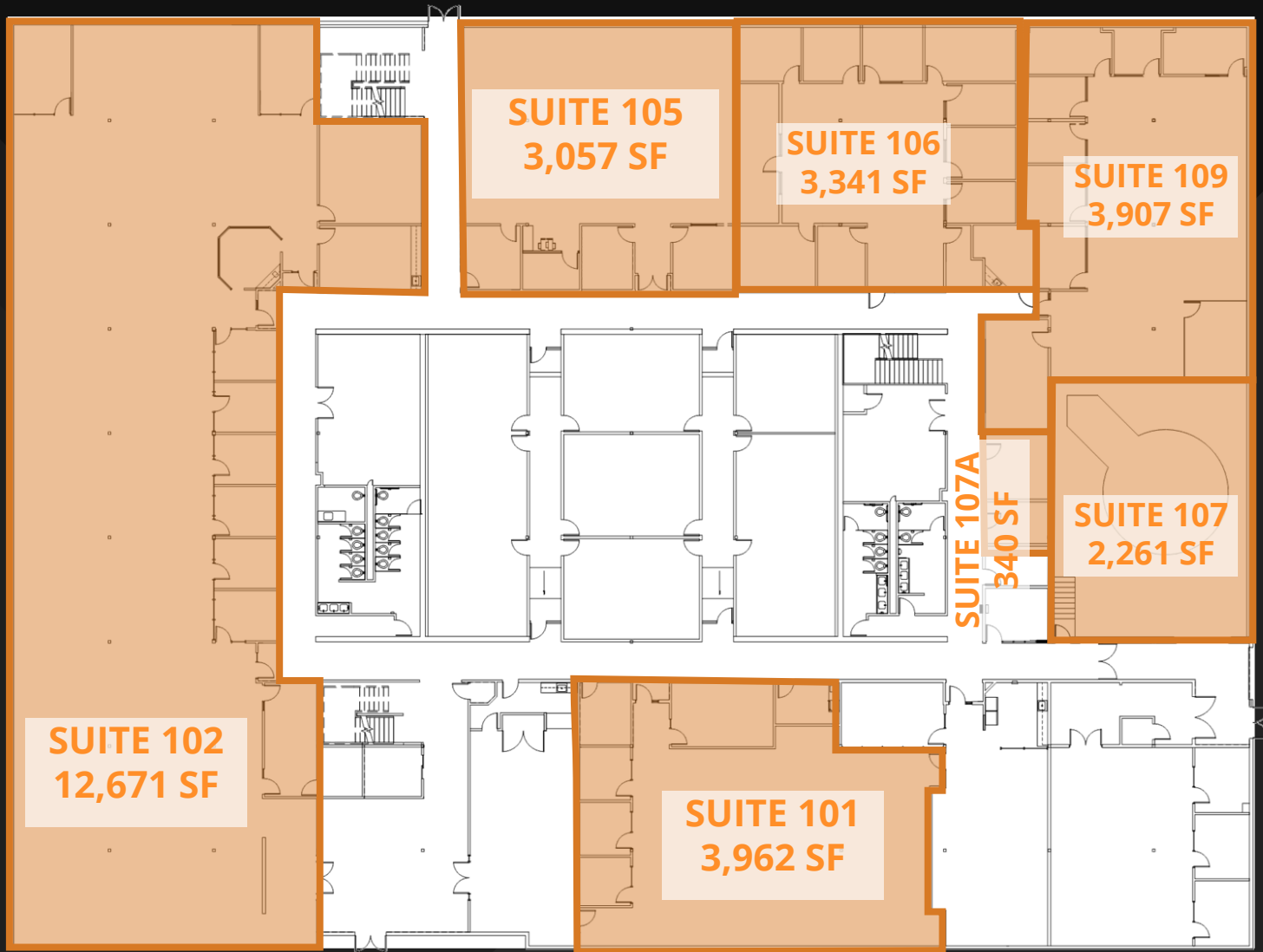
801-633-3891

s_wixom@woodburycorp.com



PROJECT HIGHLIGHTS

- 340 – 56,829 RSF available
- Lab, office, and flex compatible
- 4.5 parking stalls / 1,000 SF
- Interior lobby renovation in 2019
- 17' clear ceiling clear height
- Preeminent Location
- Fiber optic data connectivity
- Backup generation available
- Truck-high loading dock





SUITE 200
36,748 SF
AVAILABLE
1/1/2025

