

FOR LEASE

TUALATIN WAREHOUSE/ MANUFACTURING SPACE

10189 SW AVERY ST, SUITE C, TUALATIN, OR



KIDDER.COM

km Kidder
Mathews



SPACE FEATURES

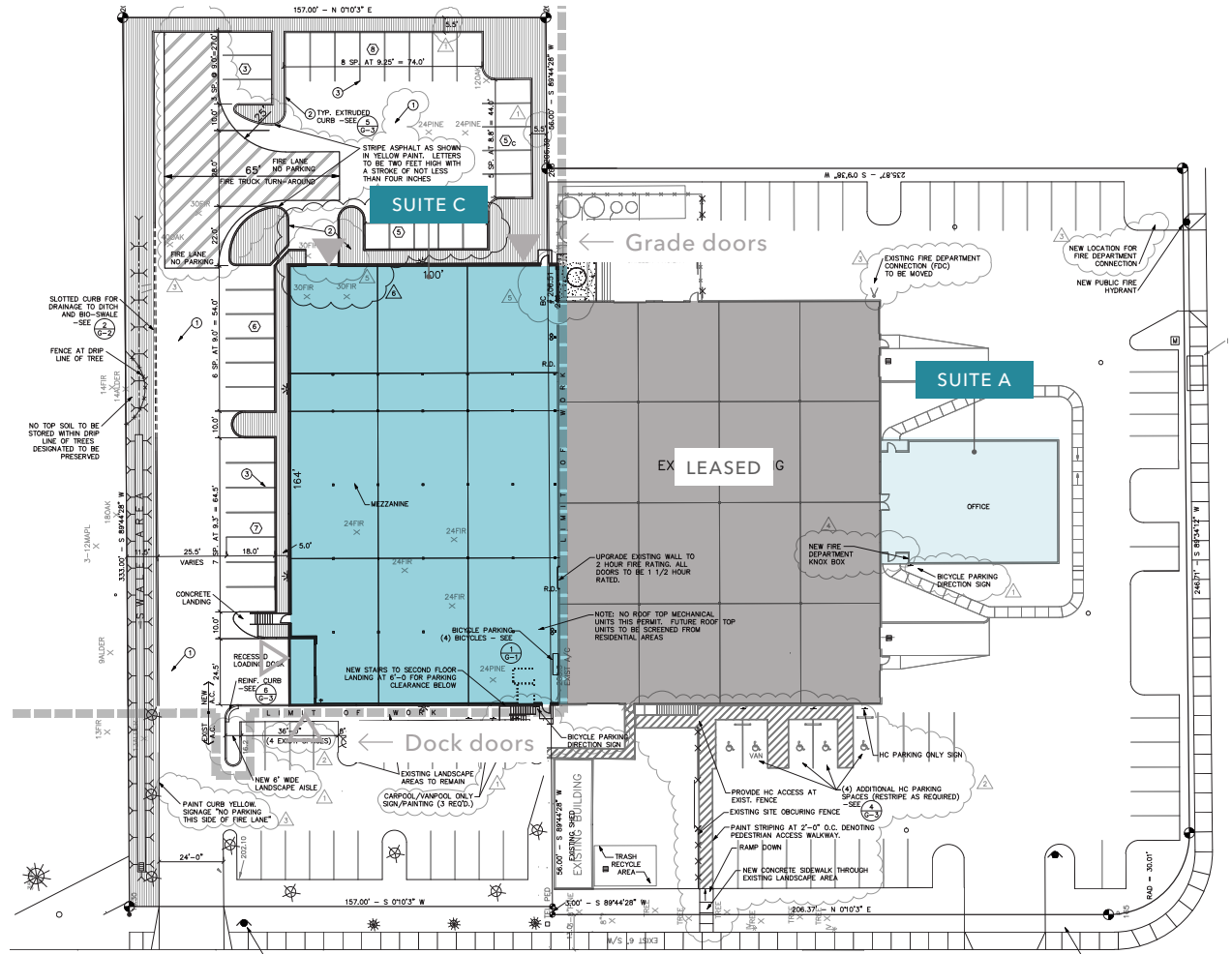
ADDRESS	10189 SW Avery St, Suite C Tualatin, OR
INDUSTRIAL SPACE AVAILABLE	15,280 SF former manufacturing/ warehouse space
OFFICE SPACE	3,036 SF of separate office space at the front of the building also available if needed
POWER	Heavy electrical service ideal for manufacturing
AIR LINES	Pneumatic air lines in place
PARKING	Abundant on-site parking
LOADING	2 dock doors 2 grade-level doors
CLEAR HEIGHT	10' in 11,280 SF portion of space 20' in 4,000 SF portion of space
LEASE RATE	Call for quote

15,280SF
AVAILABLE

CALL
FOR SALE PRICE

LEGEND

- Suite C - Warehouse
- Suite A - Office Option
- Dock level loading
- Grade level loading



SITE PLAN

Suite	SF	Power	Space Notes
Suite C	15,280 SF climate controlled manufacturing/warehouse space	Heavy 480v electrical service distributed throughout space	Space has dock and grade loading doors including one oversized grade door
Suite A	The owner is also offering a separate 3,036 SF office space for lease nearby, if needed. It is not contiguous to Suite C but just a short walk away.		

SUITE C

15,280 SF

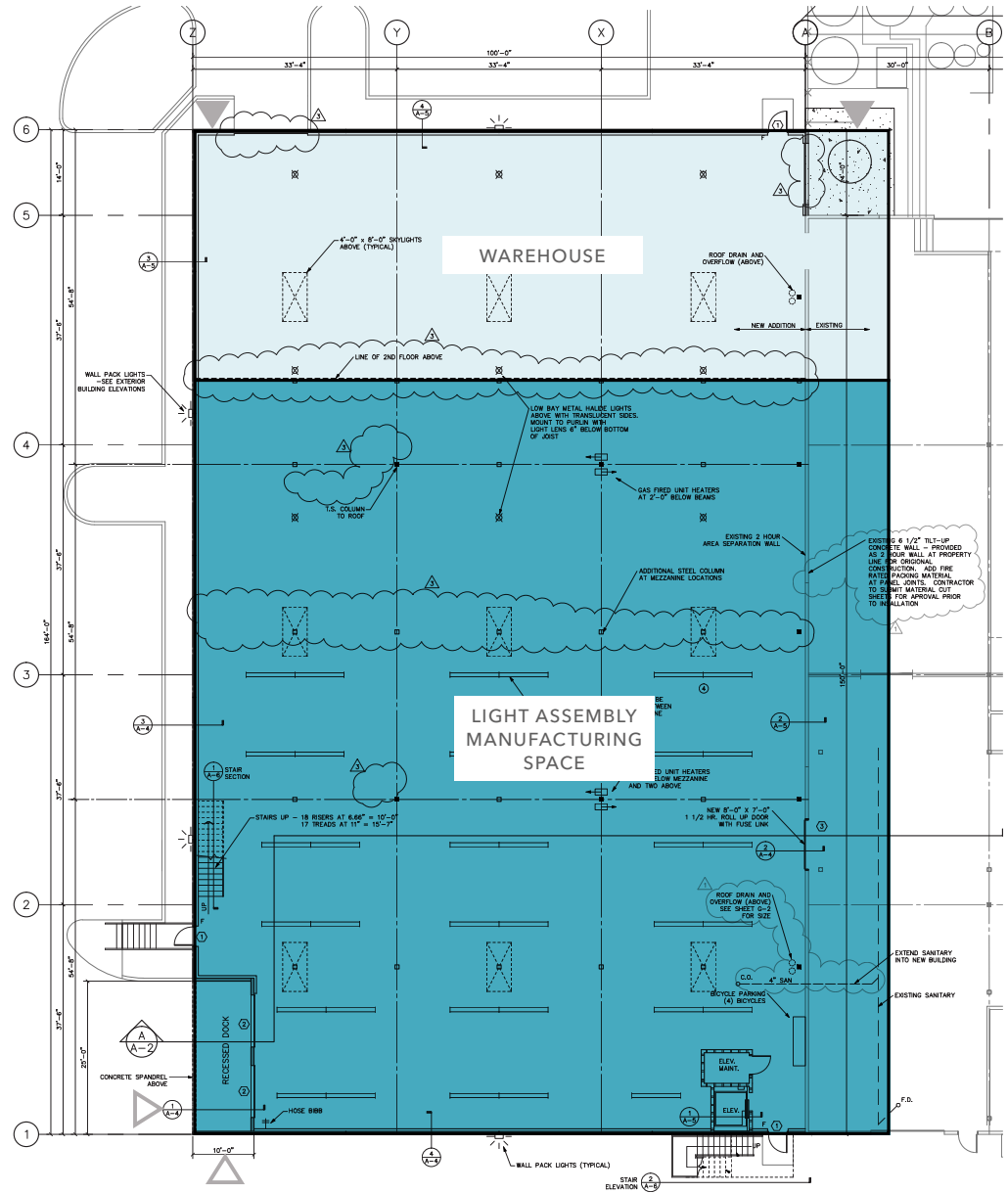
AVAILABLE

CALL

FOR LEASE RATE

NOW

AVAILABLE

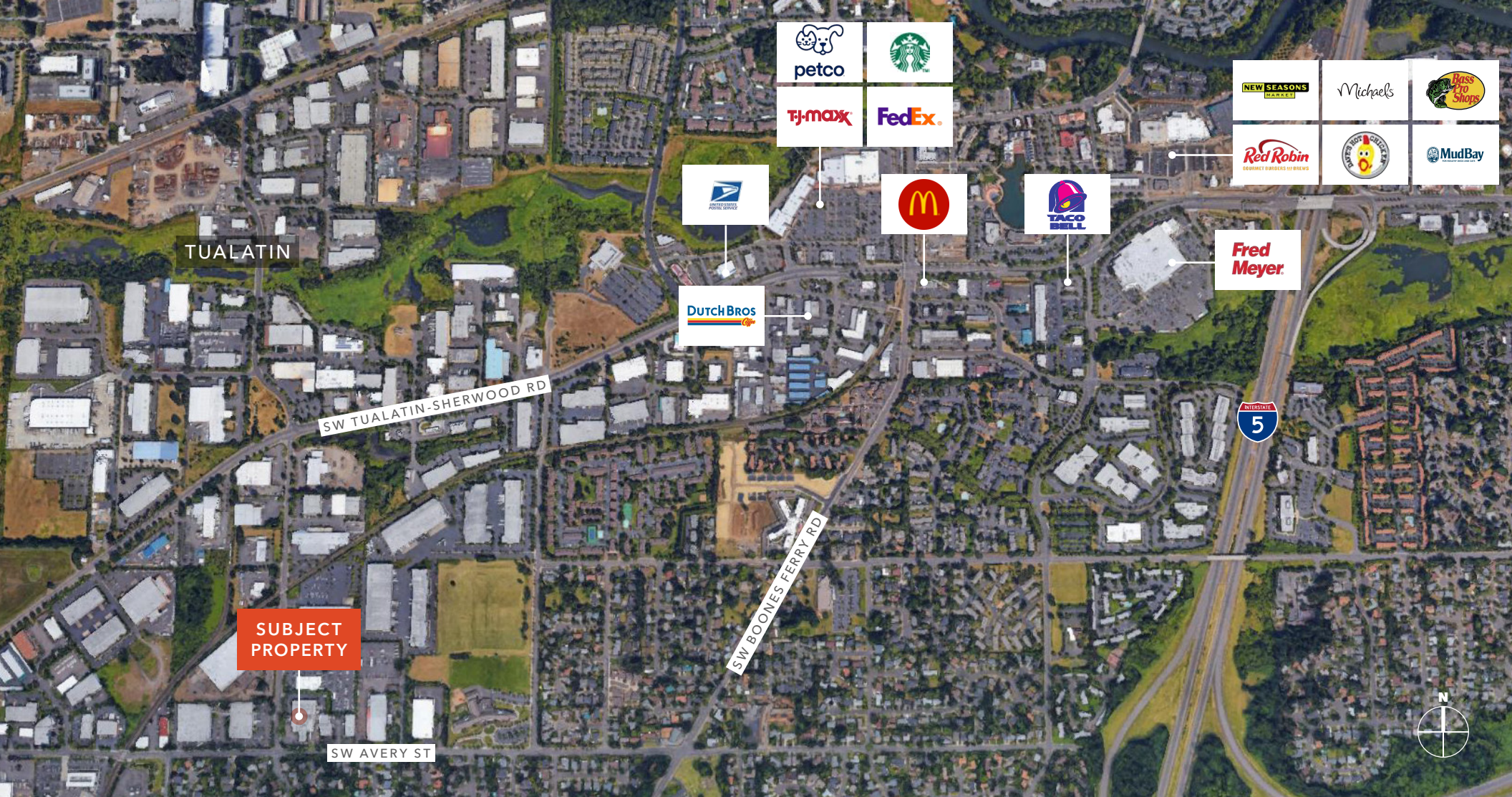


10189 SW AVERY ST



AVAILABLE FOR LEASE

KIDDER MATHEWS



10189 SW AVERY ST

For more information on this property, please contact

PETER STALICK
503.706.8180
peter.stalick@kidder.com

STEVEN KLEIN
503.221.2260
steven.klein@kidder.com

KIDDER.COM

This information supplied herein is from sources we deem reliable. It is provided without any representation, warranty, or guarantee, expressed or implied as to its accuracy. Prospective Buyer or Tenant should conduct an independent investigation and verification of all matters deemed to be material, including, but not limited to, statements of income and expenses. Consult your attorney, accountant, or other professional advisor. All Kidder Mathews designs are the sole property of Kidder Mathews. Branded materials and layouts are not authorized for use by any other firm or person.

