

For Lease

3,600 SF | \$10 NNN
Industrial Flex
Space



1525 E Army Post Rd

Des Moines, Iowa 50320

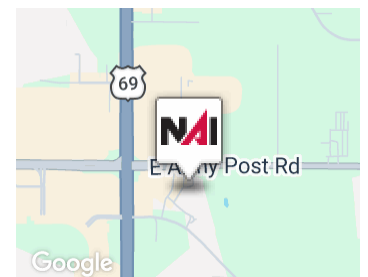
Property Overview

Turnkey 3,600 SF flex building that features 2,300 SF of newly finished shop space with epoxy floors, 10-foot overhead door, and floor drain plus an additional 1,300 SF of office and breakroom space.

Fully heated and cooled. Recent improvements include newer roof and AC, fresh paint, new gutters, resurfaced parking lot, and upgraded epoxy flooring.

Security system in place. and approximately 25 parking spaces.

Convenient access near SE 14th Street, Army Post Road, and Hwy 5 & 65.



Offering Summary

Sale Price:	\$489,900
Lease Rate:	\$10 SF/yr (NNN)
Available SF:	3,600 SF
Lot Size:	16,385 SF

For More Information



Dan Dempsey

C: 515 306 0794

djdempsey@iowarealtycommercial.com

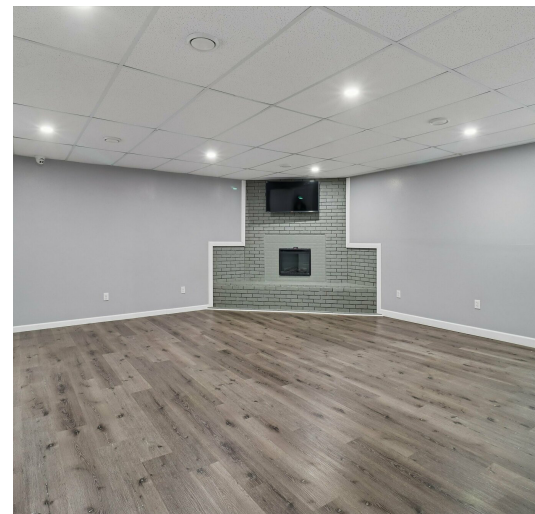
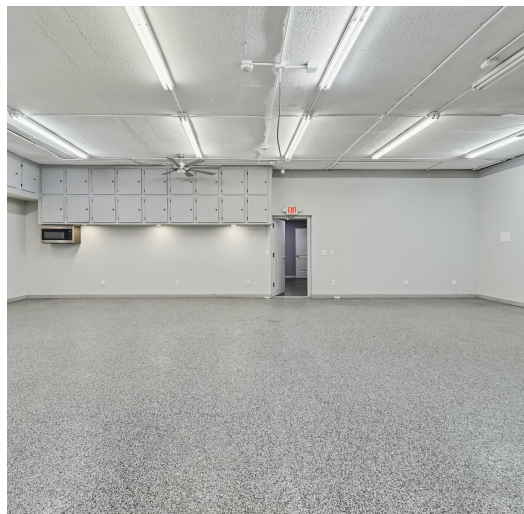
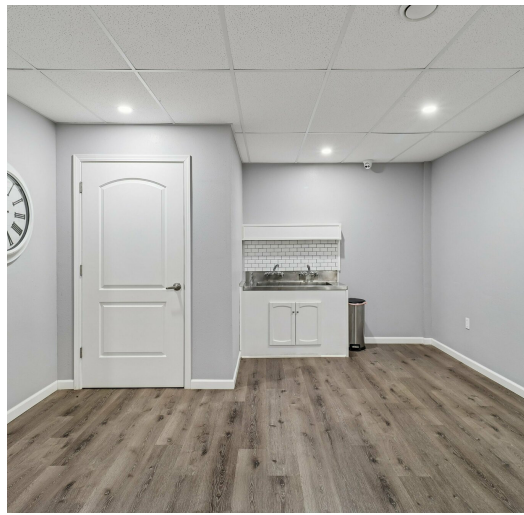
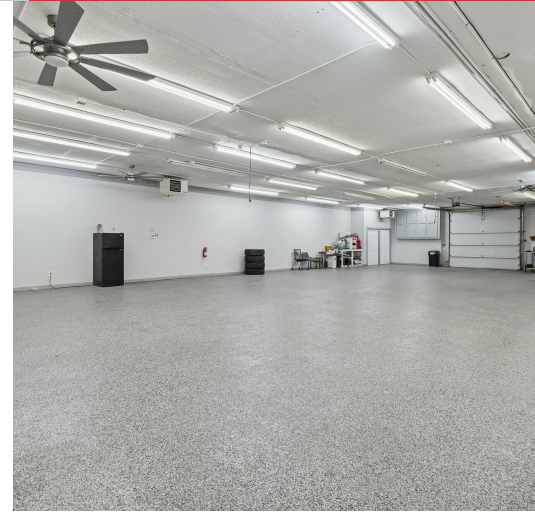
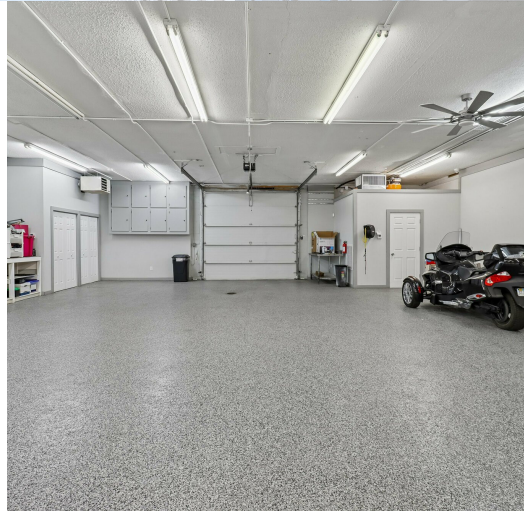
FLYER

1525 E Army Post Rd, Des Moines, IA 50320

We obtained the information above from sources we believe to be reliable. However, we have not verified its accuracy and make no guarantee, warranty or representation about it. It is submitted subject to the possibility of errors, omissions, change of price, rental or other conditions, prior sale, lease or financing, or withdrawal without notice. We include projections, opinions, assumptions or estimates for example only, and they may not represent current or future performance of the property. You and your tax and legal advisors should conduct your own investigation of the property and transaction.

For Lease

3,600 SF | \$10 NNN
Industrial Flex
Space



FLYER

1525 E Army Post Rd, Des Moines, IA 50320

We obtained the information above from sources we believe to be reliable. However, we have not verified its accuracy and make no guarantee, warranty or representation about it. It is submitted subject to the possibility of errors, omissions, change of price, rental or other conditions, prior sale, lease or financing, or withdrawal without notice. We include projections, opinions, assumptions or estimates for example only, and they may not represent current or future performance of the property. You and your tax and legal advisors should conduct your own investigation of the property and transaction.