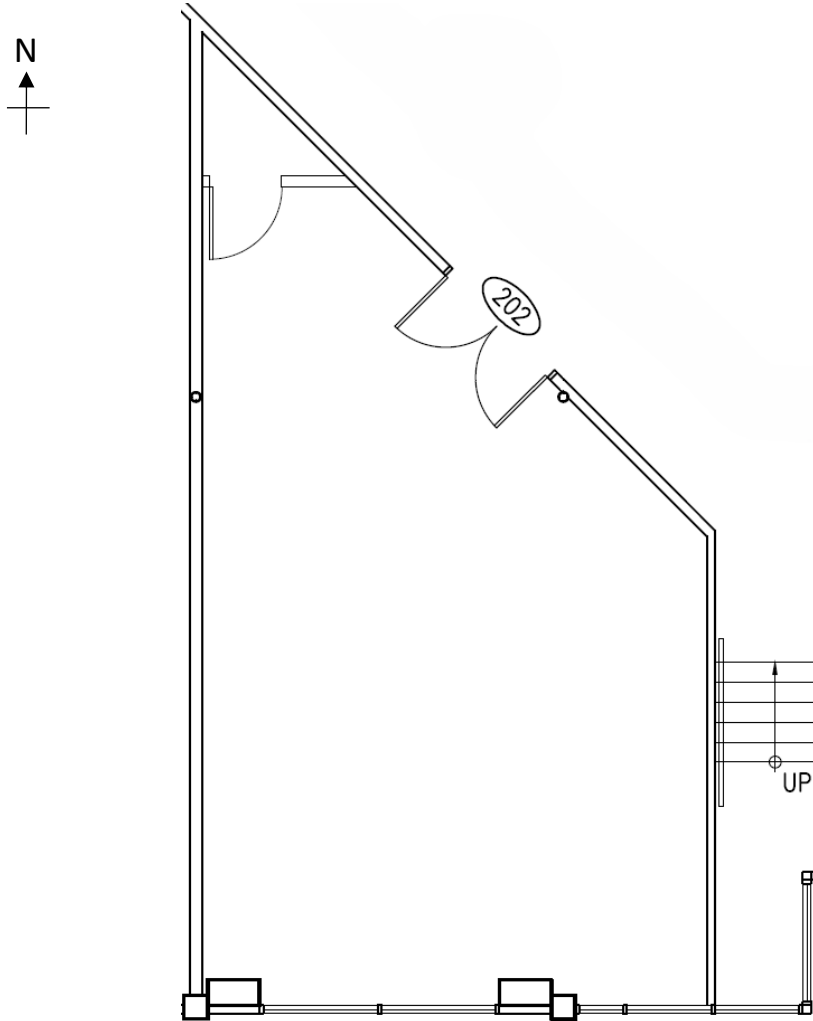


2323 Quebec Street, Vancouver, BC



Suite 202 745 square feet

Description: South facing unit with open space, storage closets, and glass entry door with sidelights. Contiguous with Suite 204 totaling 1,535 sq. ft.

This is a representation for marketing purposes only and should not be used for measurements of any kind. This drawing is not to scale.

TPMG CAPITAL

Real Estate Acquisition
Management
Leasing