

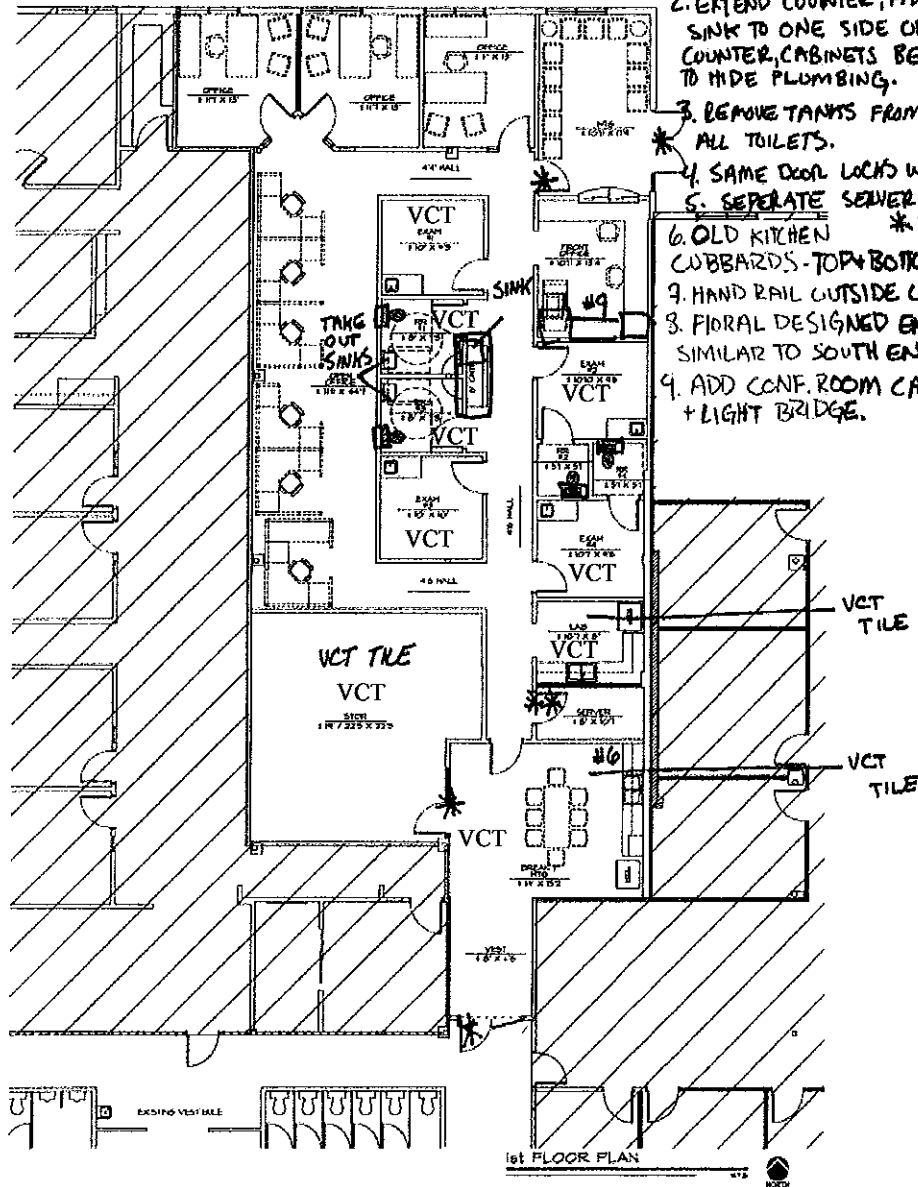
Exhibit "A"

ATTACHED TO AND FORMING A PART OF  
 FIRST AMENDMENT TO LEASE  
 DATED AS OF March 31, 2014  
 BETWEEN  
 Presson Corporation, AS LESSOR  
 AND

S&S Switzer Family Living Trust dba Sheila Switzer & Associates, AS LESSEE

WORK

1. TAKE SINKS OUT RRS 14
2. EXTEND COUNTER, ADD SINK TO ONE SIDE OF COUNTER, CABINETS BELOW TO HIDE PLUMBING.
3. REMOVE TANKS FROM ALL TOILETS.
4. SAME DOOR LOCKS W/ \*
5. SEPERATE SERVER LOC. \*\*
6. OLD KITCHEN COBBARDS - TOP & BOTTOM \*\*
7. HAND RAIL OUTSIDE W/ R
8. FIDRAL DESIGNED ENTRY SIMILAR TO SOUTH ENTRY
9. ADD CONF. ROOM CABIN + LIGHT BRIDGE.



**DIGGES**  
 DESIGN  
 INTERIORS INC.  
 1400 N. 34th St. Phoenix, AZ 85018  
 Tel: 602-998-4431 Fax: 602-998-4431

**POINTE BUSINESS PLAZA**

7277 N. 16TH STREET PHOENIX, AZ 85020

EXAM ONE (SP-4) (3B70 of R)

JOB # 762-78 3-24-2014 DRAWN BY: JT