

2200  
CABOT



RE Development  
Solutions

For more information

Patrick Kiefer

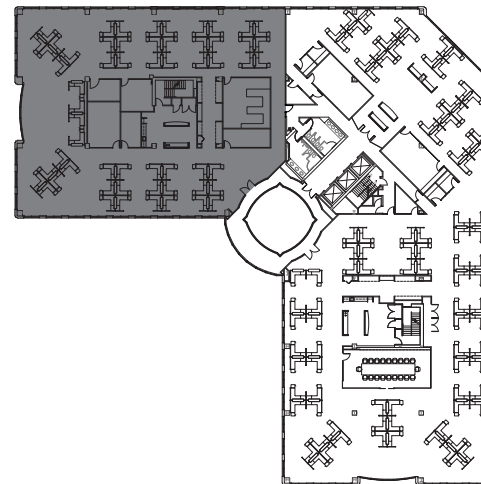
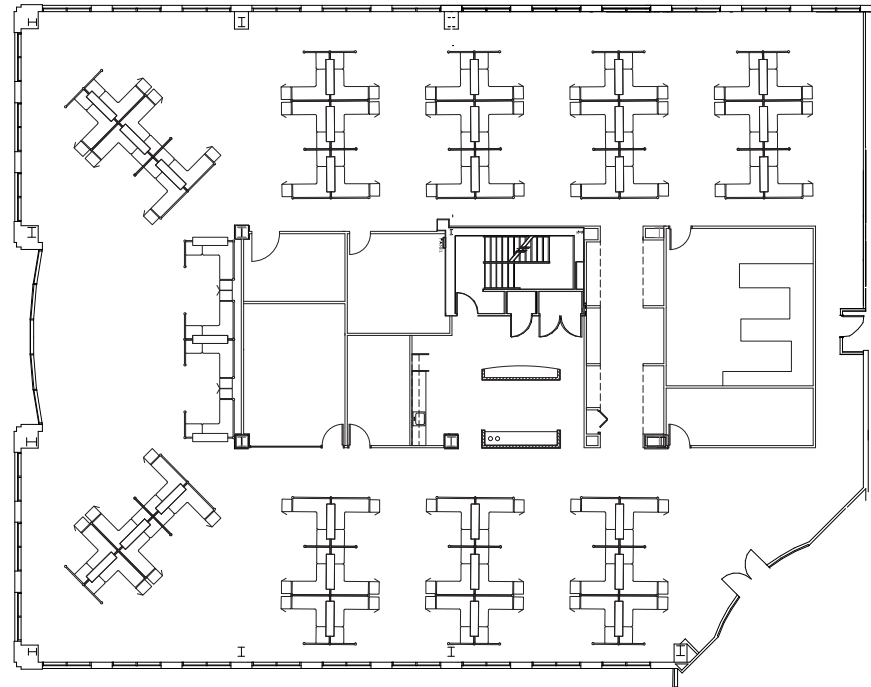
630 693 0670

[pkiefer@hiffman.com](mailto:pkiefer@hiffman.com)

**NAI Hiffman**  
Commercial Real Estate Services, Worldwide

## 2nd Floor

12,327 RSF Available  
*furnished as shown*



2200  
CABOT



RE Development  
Solutions

For more information

Patrick Kiefer

630 693 0670

pkiefer@hiffman.com

**NAI**Hiffman  
Commercial Real Estate Services, Worldwide

## 2nd Floor

12,327 RSF Available

