



851 IRWIN STREET

NEWLY
REMODELED
OFFICES
FOR LEASE



James Kilpatrick
President
james@nainorcal.com
510.290.9647
CalDRE #01277022

Seth Hubbert
Investment Advisor
shubbert@nainorcal.com
510.757.9929
CalDRE #02158135

Damon Gerstein
Investment Advisor
dgerstein@nainorcal.com
415.465.4907
CalDRE #02268840

Tim Marshall
Investment Advisor
tmarshall@nainorcal.com
408.502.5363
CalDRE #02325164

Ian Cruda
Investment Advisor
icruda@nainorcal.com
408.204.2287
CalDRE #02250093



THE BUILDING

851 Irwin Street is a spacious three-story building spanning over 27K square feet, exterior decks, lobby, elevators, and natural light in each unit create an ideal space for small businesses. Conveniently located near Marin SMART Train, restaurants, grocery stores, and shops.

HIGHLIGHTS

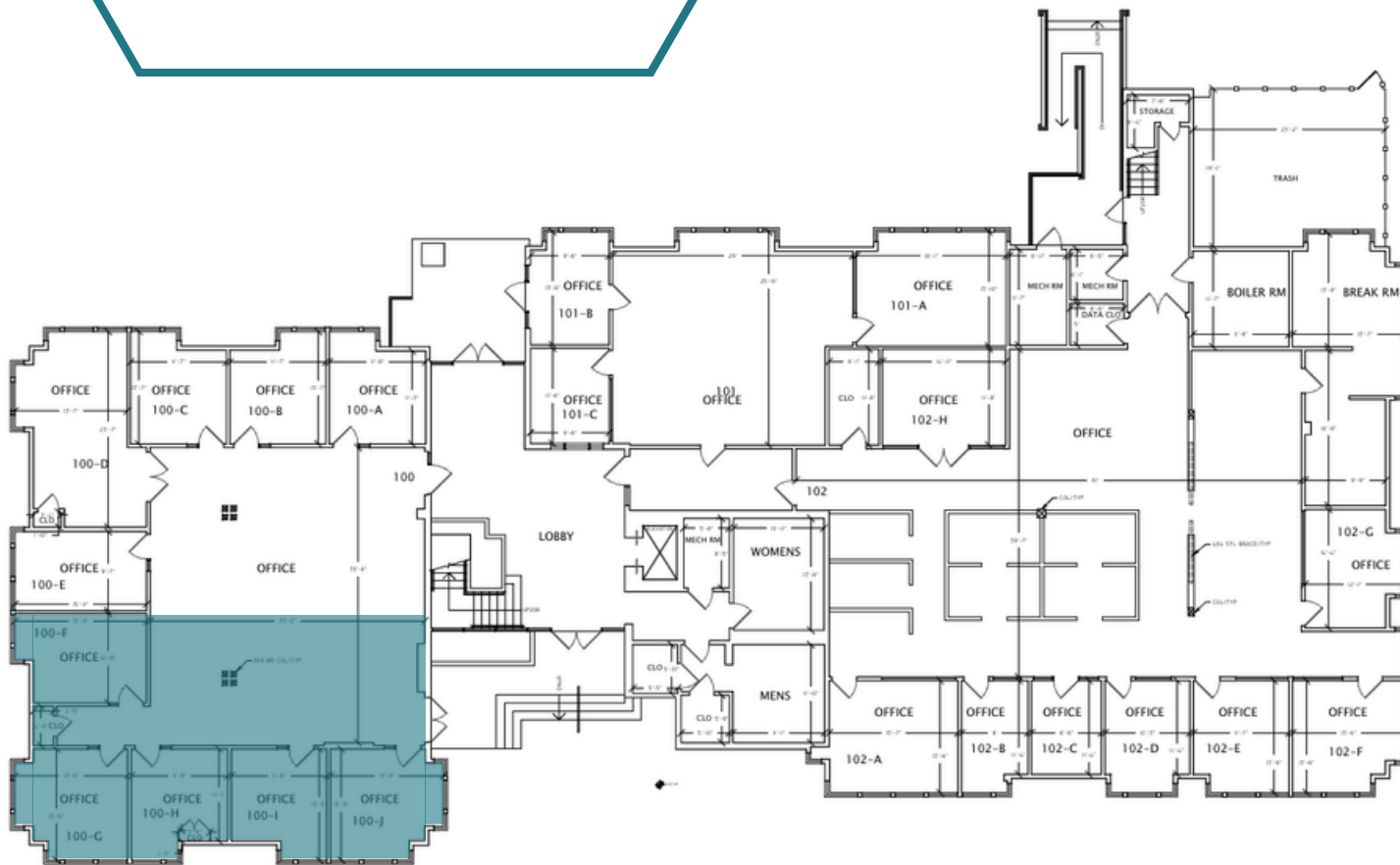
- Ample On-Site Parking
- Shared Kitchen and Conference Rooms
- Building-wide WiFi
- 1 Minute walk to Whole Foods, Shops, & Restaurants
- 1 Minute walk to SMART Train and Marin Bus Depot
- Easy Freeway Access
- Responsive On-Site Management
- Short Term & Flexible Leases
- On-Site Showing & Tour Contact
- Commission Fees available for Tenant Reps

[Watch Here 3D Walkthrough](#)

851

IRWIN STREET

1ST FLOOR
130 SF - 4,300 SF



 AVAILABLE
UNITS

SUITE	RENTABLE SF	BASE \$/SF
105	1,775	\$2.40
1st Floor Total	+/- 1,775	



851

IRWIN STREET

2ND FLOOR
130 SF - 6,580 SF



 AVAILABLE UNITS

SUITE	RENTABLE SF	RENT \$/SF
201/202	599 SF	\$2.25
208	374 SF	\$2.25
215	814 SF	\$2.24
222	80 SF	\$2.25
225B	132 SF	\$2.25
2nd Floor Total	+/- 2,000	



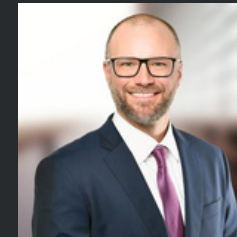
851

IRWIN STREET

FOR LEASING INFORMATION



James Kilpatrick
james@nainorcal.com
510.290.9647
LIC# 01277022



Seth Hubbert
shubbert@nainorcal.com
510.757.9929
CalDRE #02158135



Damon Gerstein
dgerstein@nainorcal.com
415.465.4907
CalDRE #02268840



Tim Marshall
tmarshall@nainorcal.com
408.502.5363
CalDRE #02325164



Ian Cruda
icruda@nainorcal.com
408.204.2287
CalDRE #02250093