

FOR SALE | FULLY APPROVED INDUSTRIAL SITE

16 ACRE SITE FULLY PERMITTED FOR 67,500 SQ FT

4431 Route 910 | Gibsonsia, PA 15044



For More Information:

Robert Bowman
rbowman@landmarkprop.com
D 724-443-9000 Ext. 215



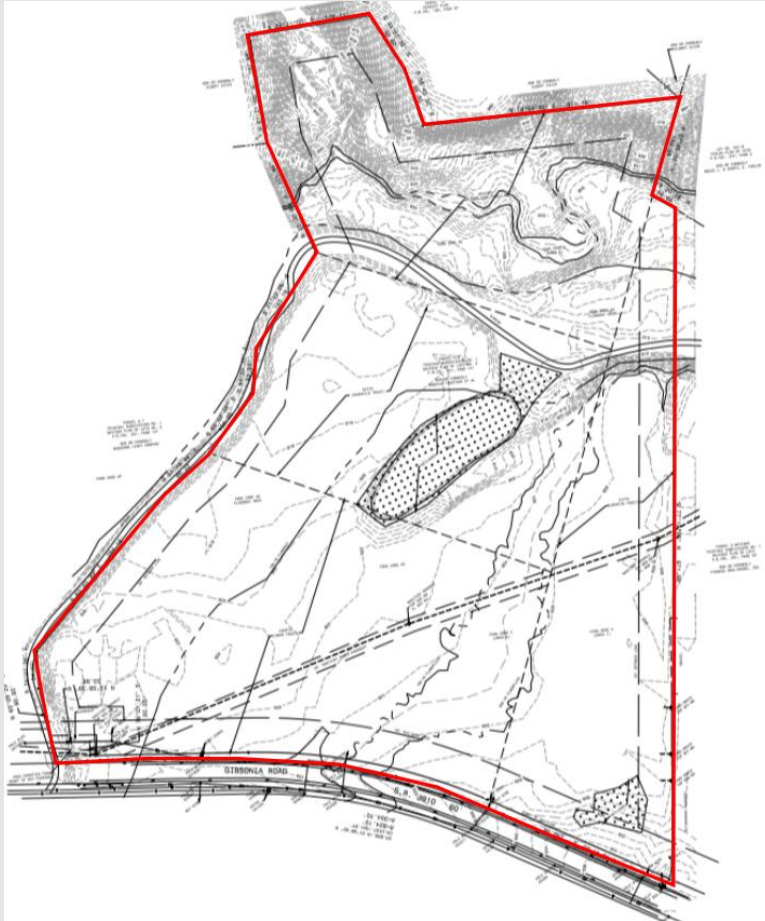
LOCATION & CONNECTIVITY

4431 Route 910 | Gibsonia, PA 15044



Development by:





Permitted Building Specifications

BUILDING SIZE	67,500 Sq. Ft.
CLEAR HEIGHT	28'
COLUMN SPACING	50'x50'
LOADING	Rear loading with 130' tractor trailer apron space. Entire building can service up to 24 dock positions and 4 drive in positions. Dock and drive In positions customizable upon request.
PARKING	+/- 119 Spaces
POWER	800+ amp, 480 volt, 3 phase
UTILITIES	All Public
ACRES/ZONING	16.41 Special Use includes Industrial
TOWNSHIP	West Deer

Development by:



4431 Route 910 | Gibsonia, PA 15044

For more information:

Robert Bowman

rbowman@landmarkprop.com

D 724-443-9000 Ext. 215

